

---

# Introduction

IGT illustrated parts catalogues will be updated at intervals, throughout the life of the gaming machine, to reflect any changes in parts or part numbers. Any discrepancies found in this publication should be noted in the tables below and a copy sent to :

IGT Australia Pty Limited, 1 Rosebery Avenue, Rosebery. NSW 2018. Attention : Tech Pubs Dept, Level 8, Engineering.

## CHANGED PART NUMBERS

Item	Part Number	Description	Page No

Item	Part Number	Description	Page No

**Note:** \* denotes the part comes in a range of colour variations, refer to Page 39-40 for specific part numbers on these colour variations.

## MAIN MACHINE COMPONENTS

Item	Part Number	Description	Qty
1		Lower Cabinet, Refer to Figure D-1	
2		Sandwich Box/Player Tracking	
3		Top Box, Refer to Figure C-1	
4		Light Tower, Refer to Figure C-2	
5		Perspex Clamp Side, Refer to Figure C-1	
6		Upper Perspex, Refer to Figure C-1	
7		Perspex Clamp Lower, Refer to Figure C-1	
8		Reflector Assembly, Refer to Figure C-1	
9		Fluorescent Tube, Refer to Figure C-1	
10		Harness, Refer to Figure D-1	

Item	Part Number	Description	Qty
11		Touchscreen Monitor, Refer to Figure E-1	
12		World Bill Acceptor, Refer to Figure H1	
13		Power Distribution, Refer to Figure D-3	
14		Coin Guide, Refer to Figure D-1	
15		Coin Hopper, Refer to Figure F1	
16		Power supply, Refer to Figure D-1	
17		Logic Tray, Refer to Figure D-2	
18		Power Cord, Refer to Figure D-1	
19		Main Door, Refer to Figure B-1	
20		Perspex Player Tracking	

# MAIN MACHINE COMPONENTS

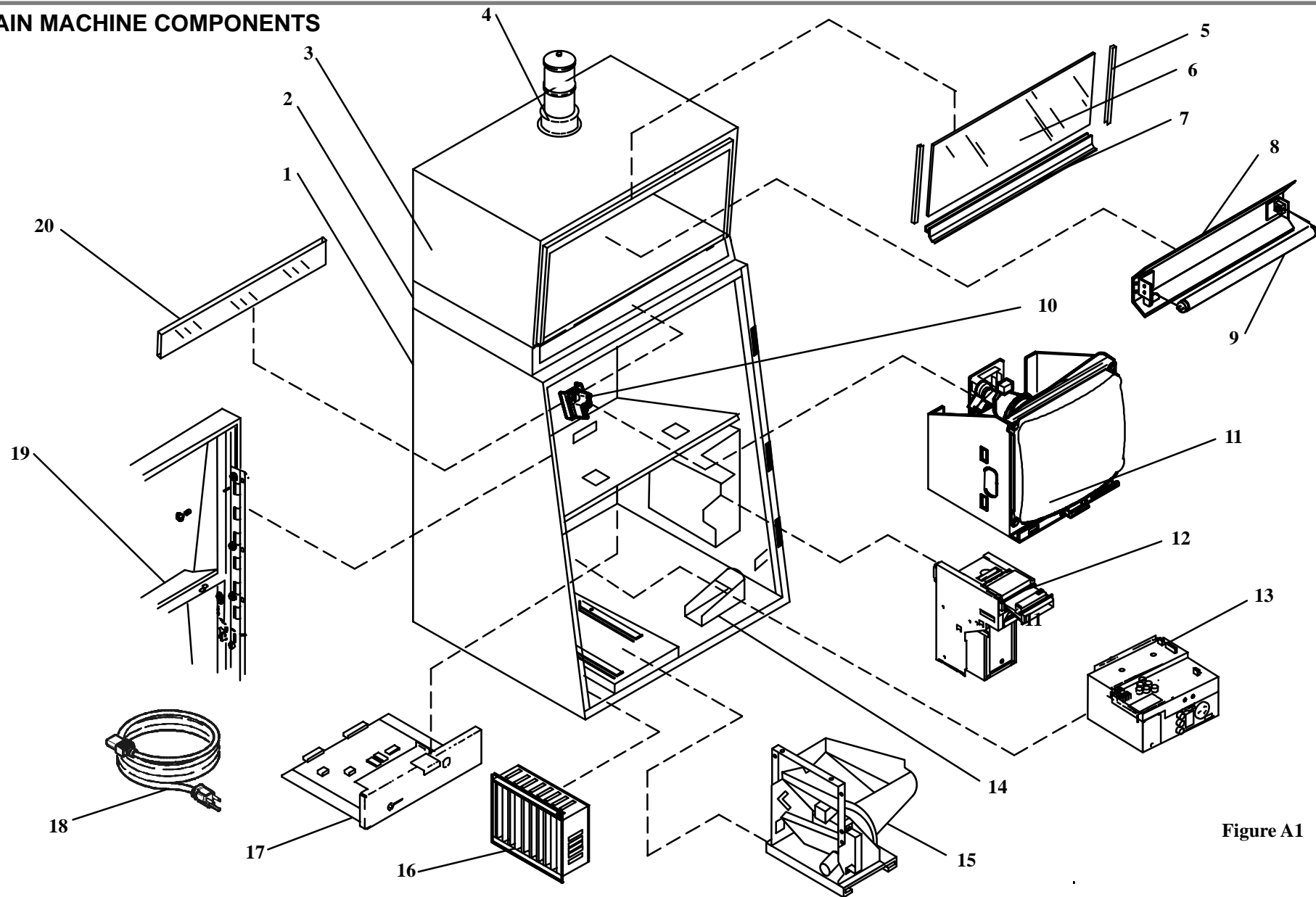


Figure A1

## MAIN DOOR ASSEMBLY

Item	Part Number	Description	Qty
1	A36-007-06*	GU4 Door assembly	1
-	A70-010-96*	GU4 Door	1
2	280-084-00	Hinge door 19" lottery	1
-	688-244-90	Cover light hinge	1
3	A31-004-98	Clamp only TTV upper	1
4	A36-007-03	Monitor Mask Assembly w/tape	1
-	A71-002-14	Tape 2004 8mm x 3mm	1.0m
-	A71-002-18	Tape foam 3204 3.2 x 6	1.0m
5	A31-010-66	Clamp lower glass	1
6	A36-004-36	Belly panel, Refer to figure B-2	1
7	A75-000-45	Coin Validator S7, Refer to Figure B-6	1
8	A36-001-48	Coin Assembly, Refer to Figure B-6	1

Item	Part Number	Description	Qty
9	130-012-90	Speaker 3 x 5" 4ohm 5W	1
-	688-632-00	Cover speaker 19" video 960	1
10	A36-004-33	Coin Tray, Refer to figure B-3	1
11	A31-008-06	Locking Bar, Refer to figure B-4	1
12	A32-001-53	Elec. mechanic. meters, Refer to Figure B-5	1
13	652-190-00	Bezel main door WBA	1
14	A70-010-7115	Logo Plate Spectrum	1
14	A70-010-7116	Logo Plate Monarch	1
15	A70-010-97*	C/Trim GU4 10SQ+4OVAL, Refer to Figure J-1	1
-	A30-903-33	Harness 10+4Button	

## MAIN DOOR ASSEMBLY

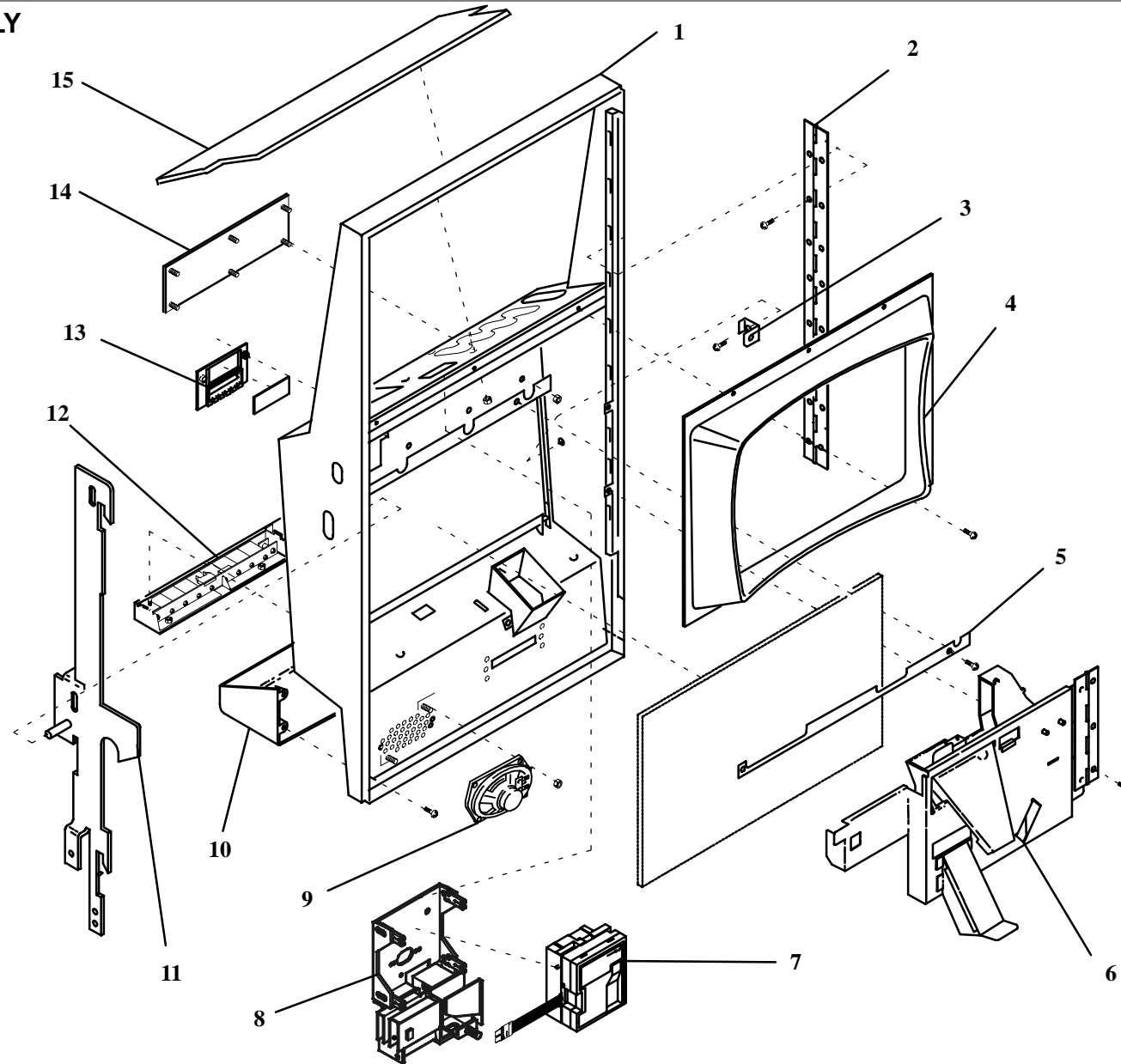


Figure B1

## BELLY PANEL

Item	Part Number	Description	Qty
	A36-004-36	Panel assembly reject/drop GK2	1
1	A31-010-63	Panel reject/drop GK2	1
-	A70-008-36	Clip retaining drop/reject Game King	1

Item	Part Number	Description	Qty
2	A60-001-12	Ballast asy 25VDC 15W single plst	1
3	A31-012-15	Coin in chute assembly GK2	1
4	A31-008-87	Cash box chute p/choice #3	1

## BELLY PANEL ASSEMBLY

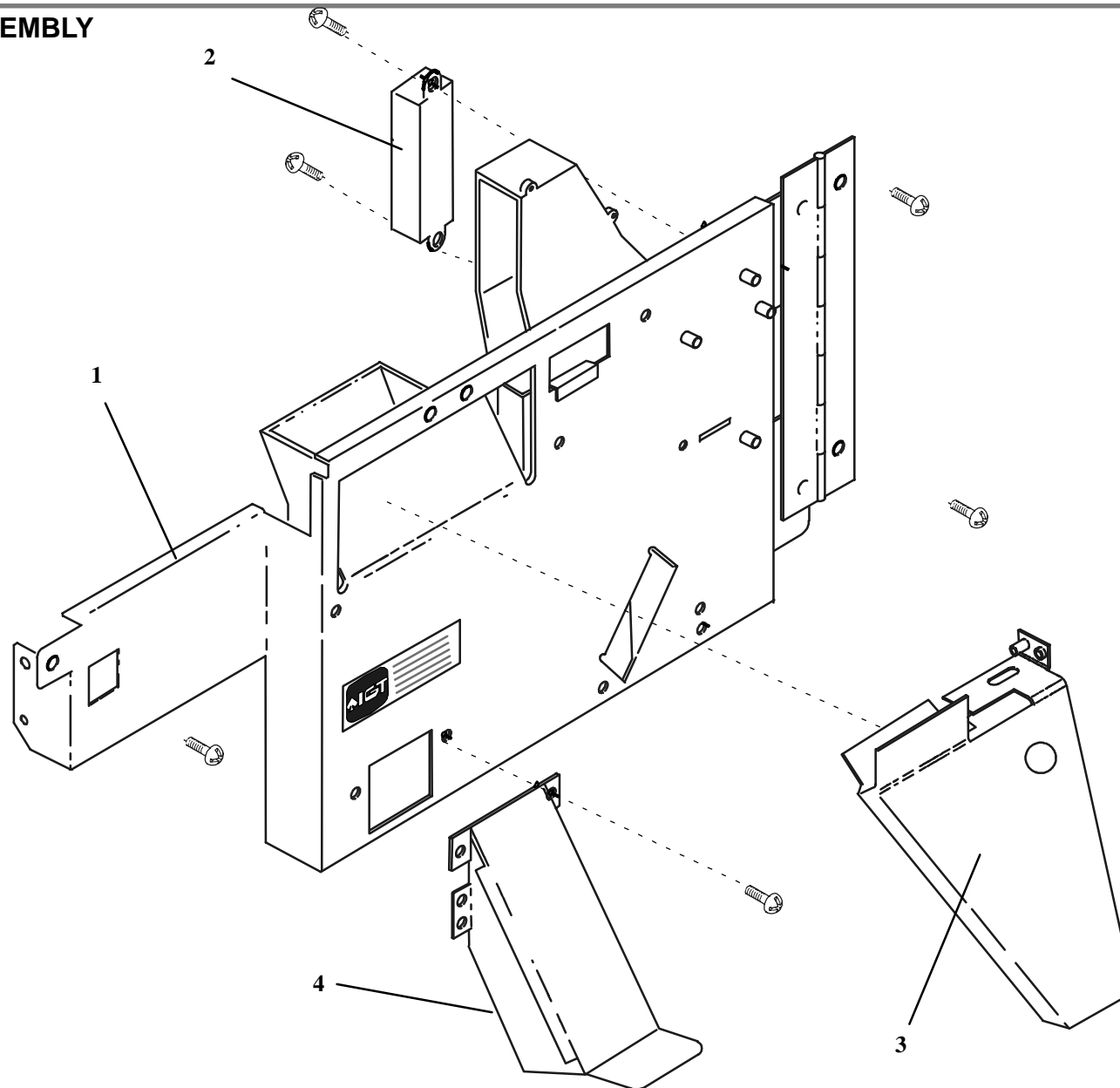


Figure B2

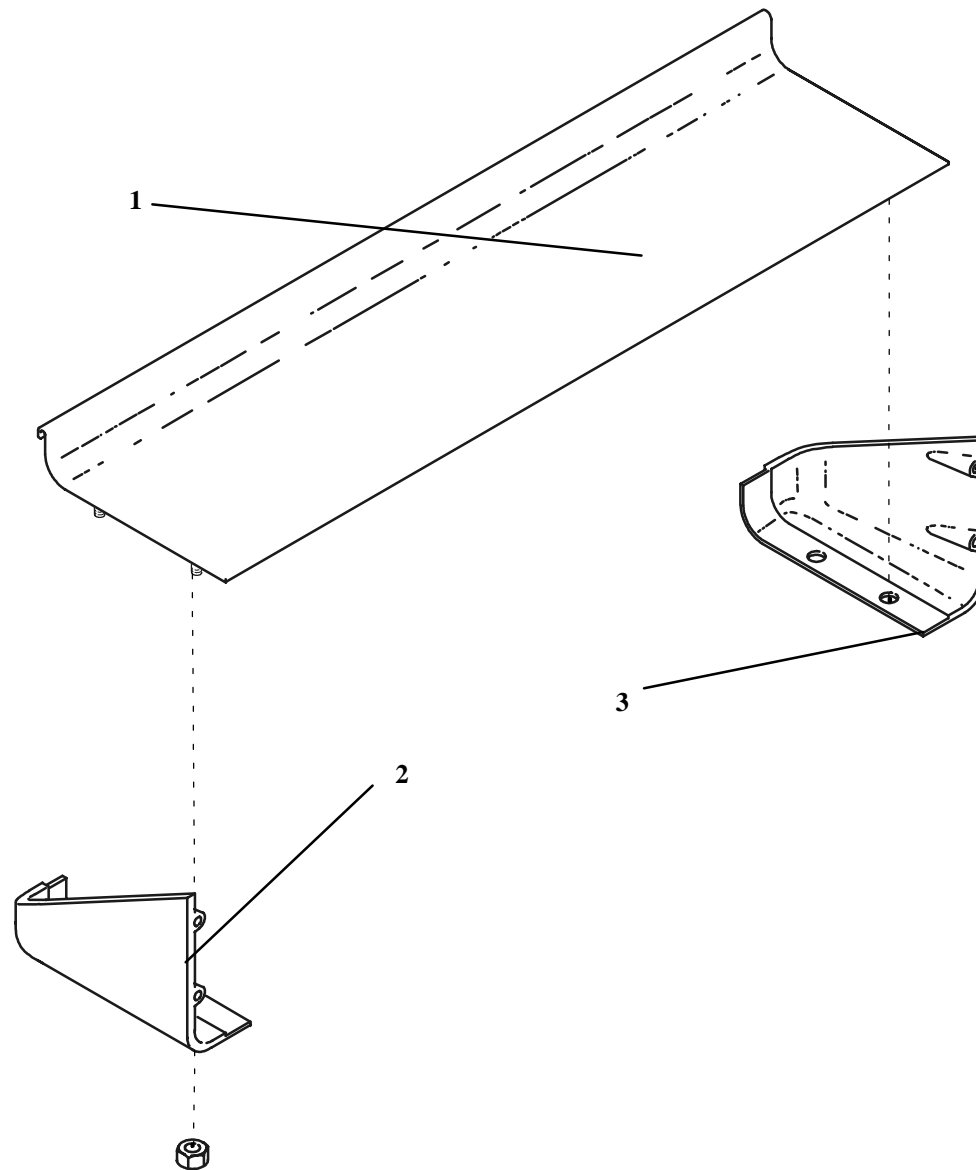
## COIN CHIP TRAY ASSEMBLY

Item	Part Number	Description	Qty
	A36-004-33*	Chip tray assembly GK2	1
1	597-295-00	Chip tray 80960	1
2	659-159-00	End cap cast 19" right hand	1

Item	Part Number	Description	Qty
3	659-159-01	End cap cast 19" left hand	1



## COIN / CHIP TRAY ASSEMBLY



**Figure B3**

## MAIN DOOR LOCKING BAR ASSEMBLY

Item	Part Number	Description	Qty
1	674-175-00	Spacer ST RD x .125	2
2	A31-008-06	Locking bar main door 19"	1
-	A69-010-29	Cover 8 x 13mm s-cap locking bar	1

Item	Part Number	Description	Qty
3	653-099-00	Door open optics mounting	1
-	575-030-00	Emitter door open diode	1
-	A30-901-38	Harn GK door optic Emitter (door)	1

## LOCKING BAR MAIN DOOR

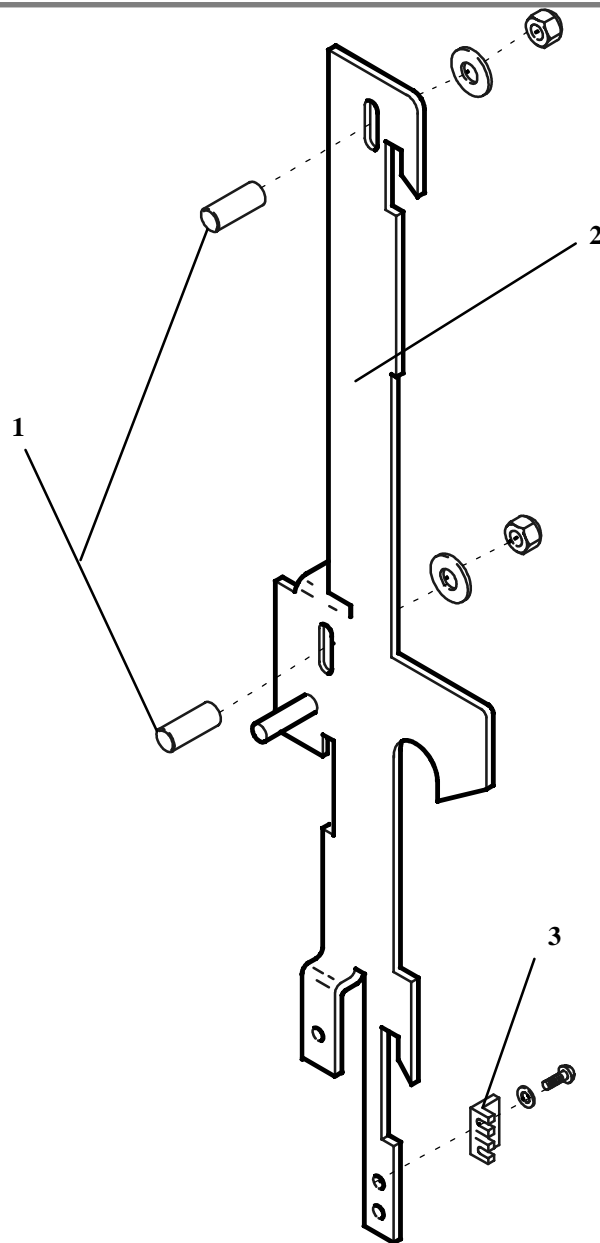


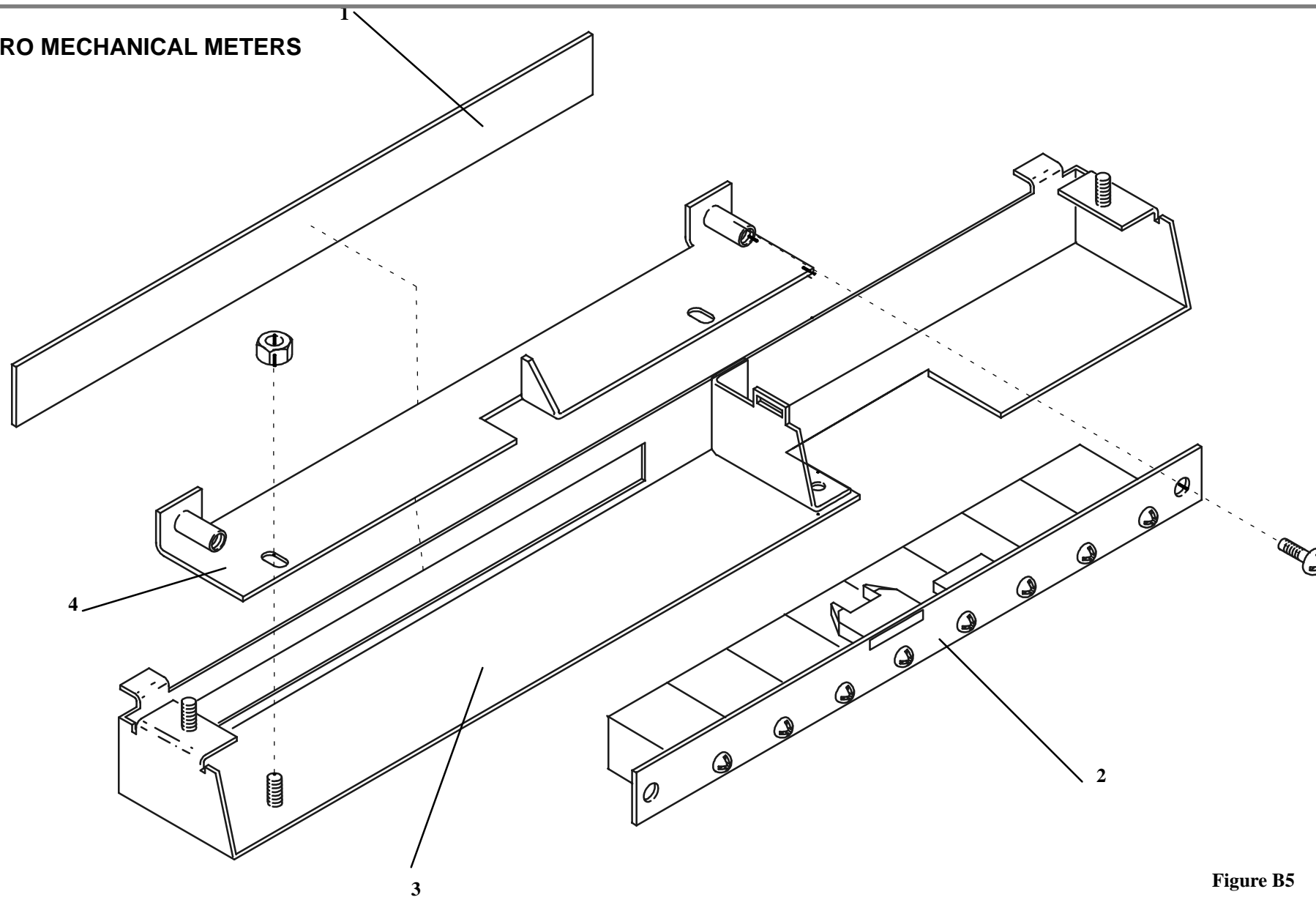
Figure B4

## ELECTRO MECHANICAL METERS

Item	Part Number	Description	Qty
	A32-001-53*	Meters asy GK2 8 meters	1
1	A71-003-10	Perspex mtrs GK2	1

Item	Part Number	Description	Qty
2	A33-900-56	PCA 8 meters GK2	1
3	A31-012-08*	Cover mtrs GK2 8 mtrs	1
4	A31-012-07	Brkt mtg meters GK2	1

## ELECTRO MECHANICAL METERS



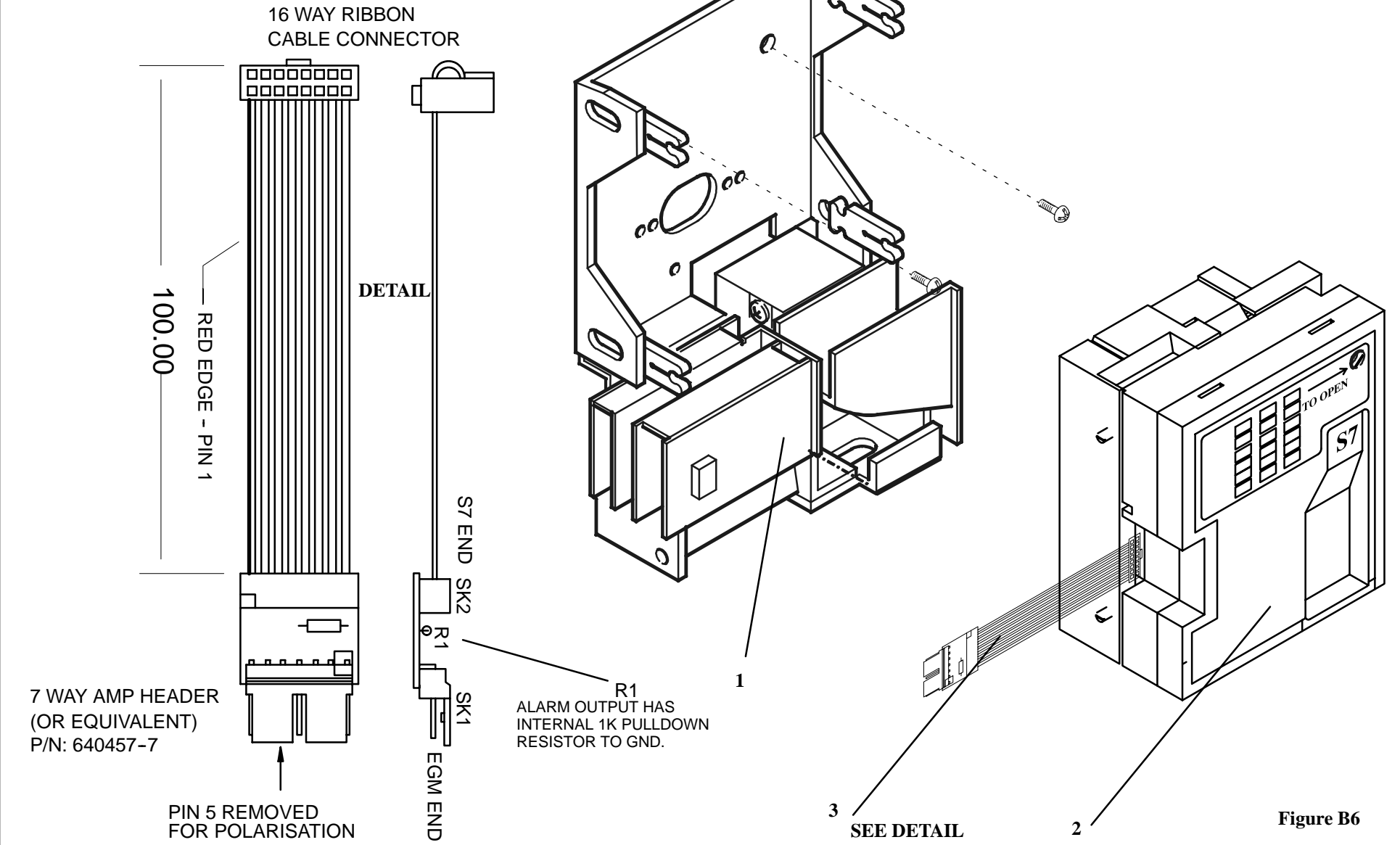
**Figure B5**

## COIN VALIDATOR S7

Item	Part Number	Description	Qty
1	A36-001-48	Coin Assembly, Refer to Figure G-1	1

Item	Part Number	Description	Qty
2	A75-000-45	Coin Validator S7	1
3	A30-903-29	Harness Coin Handling	1

# COIN VALIDATOR S7



## TOP BOX

Item	Part Number	Description	Qty
	A36-012-41*	Cabinet GK2 Upper assembly	1
1	A31-002-41*	Cabinet Upper 20.5" square	1
1	A31-002-39*	Cabinet Upper 15.8" square	1
-	A36-004-59	Upper reflector assembly	1
1	A31-008-02	Cover low boy	1
2		Light Tower, Refer to figure C-2	
2	A31-006-82*	Cover tower mounting square top	1
3	A31-005-31	Cabinet fluoro bracket S+ mounting	1
3	A31-008-60	Bracket reflector mounting GK	2
4	A31-009-97*	Frame assembly 20.5"	1
4	A69-010-48*	Frame assembly 20.5"	1
4	646-009-00	Bezel T/B 16" chrome	1
4	646-009-42	Bezel Top Box 16" black	1

Item	Part Number	Description	Qty
4	646-009-04	Bezel T/B 16" gold	1
-	A71-002-03	Tape transfer 465	.493m
5	A36-003-82	Upr reflector asy Game King	1
-	A60-001-12	Ballast plastic 15vdc	1
-	A60-008-00	Fluorescent TLD 15W / 84	1
-	A30-901-24	T/box Fluro power harness	1
6		The upper perspex is game specific and full machine detail must be supplied with an order for this part.	
7	A69-010-35*	Clamp only 20.5" left and right	2
7	A69-010-37*	Clamp only 16" left and right	2
8	A69-010-36*	Clamp only lower, square top	1
-	A71-002-03	Transfer tape 465	.938m
8	A31-004-68*	Clamp only lower, round top	1



## TOP BOX

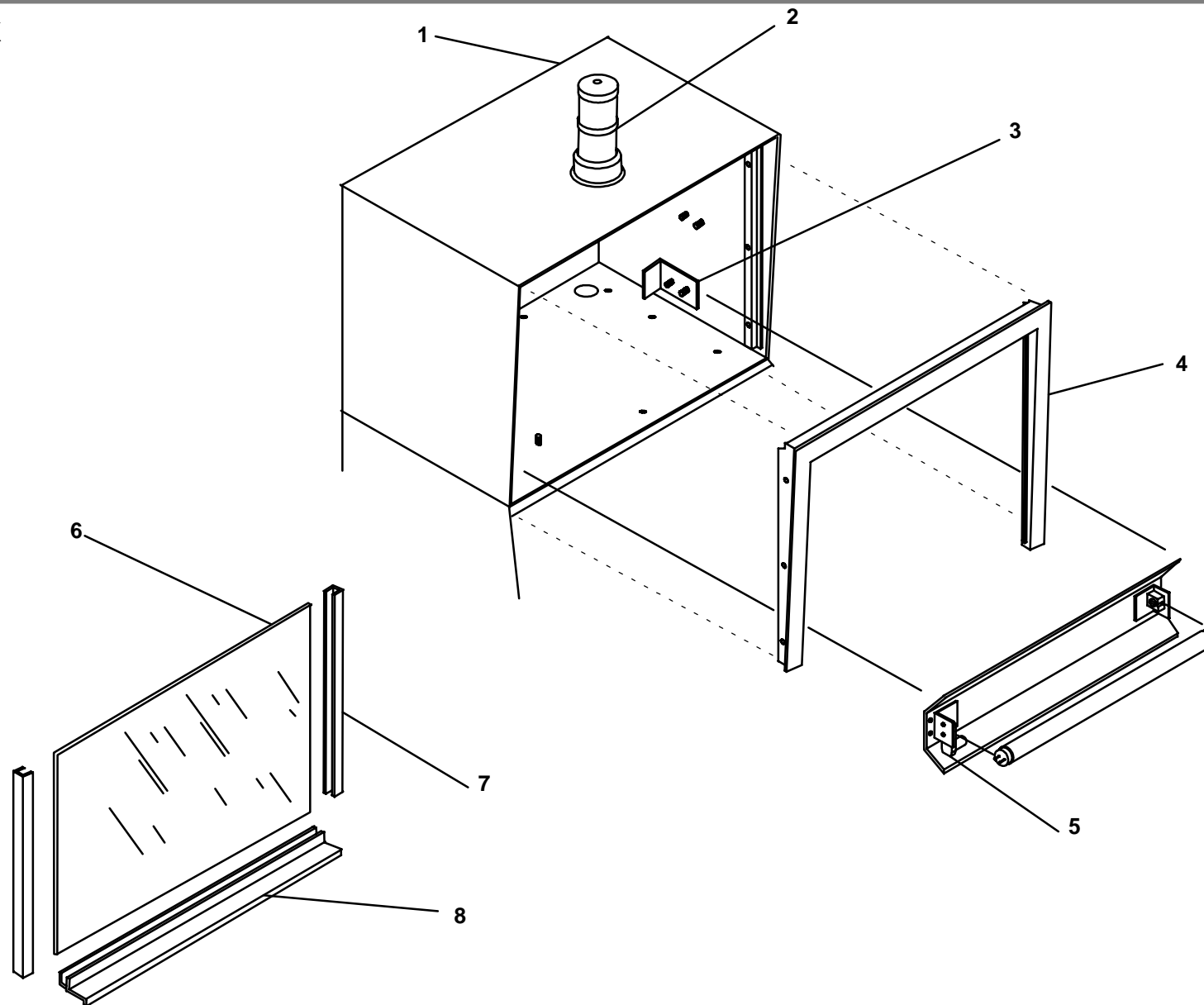


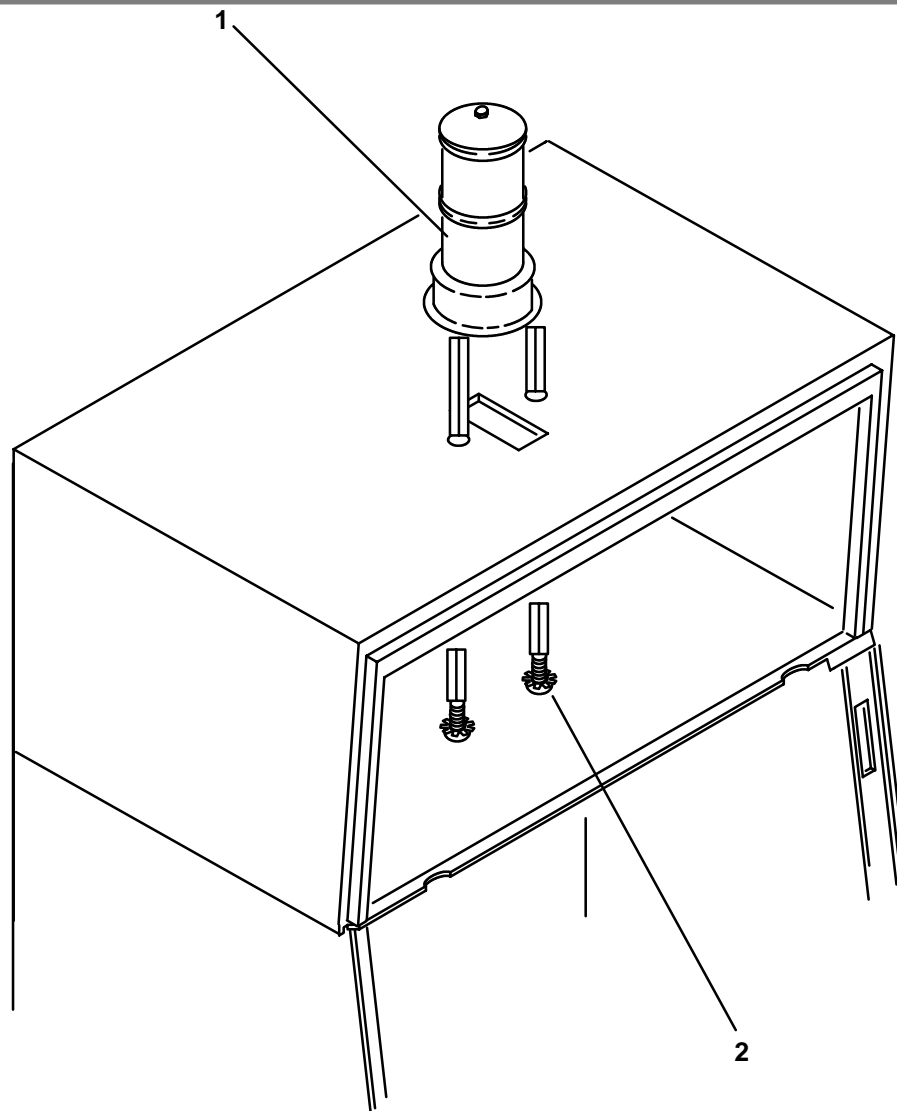
Figure C1

## LIGHT TOWER

Item	Part Number	Description	Qty
1	A60-006-30	Light tower 4" rd / yl 14VDC Brass	1
1	A60-006-21	Light tower 4" yl / rd 14VDC chrome	1
1	A60-006-04	Light tower 4" yl /wh 14VDC chrome	1
1	A60-006-20	Light tower 4" rd / yl 14VDC chrome	1

Item	Part Number	Description	Qty
-	A30-901-17	Harness light tower GK2	1
-	A31-004-77	Light tower mounting round chrome	1
	A31-006-82*	Cover tower hole	1
2	A67-001-23	Screw ph pan head 8-32 x 1"	2
-	A68-030-11	Washer s/proof M4	2

## LIGHT TOWER



**Figure C2**

## LOWER CABINET ASSEMBLIES

Item	Part Number	Description	Qty
1	141-173-00*	Cabinet GU4	1
-	A71-003-02	Door stop 20" video	1
-	674-179-00	Spacer .197 x .375 x .719	1
-	674 -178-00	Door Roller	1
-	A70-008-52	Hopper guide	3
2	A30-903-37	Harness monitor	1
3	A32-000-02	Key switch assembly	1
-	A77-000-40	Plaque key switch	1
-	A77-000-44	Compliance Plaque	1
-	A30-903-25	Harness keyswitch/Dr/Cbox	1
4		Touchscreen video monitor, Refer to Section E	
5	A75-000-28	Bill Acceptor, Refer to Section H	1
5	A75-000-47	Bill Acceptor NZ, Refer to Section H	1
6	653-099-00	Door open optics mounting	1
-	A30-901-38	Door optic emitter harness	1
-	575-029-00	Encoder door open receiver	1
-	A30-901-37	Door optic receiver harness	1

Item	Part Number	Description	Qty
7	A69-010-67	Chute coin drop	1
8		Power distribution assembly, Refer to Figure D-3	
9	A35-002-998	Hopper, Refer to Section F	1
10	A32-001-31	Power supply switchmode 960 Aus	1
-	A77-011-09	Label power supply 80960	1
-	A30-007-19	Harness comms ribbon 80960	1
-	A65-010-04	Cable ribbon 26W	.370m
-	A66-004-05	Connector 26W M5320-26NBGS1	1
-	A68-001-02	Screw ph pan hd M3 x 10	4
11	A60-990-01	Cord power P75-P18 x 2m	1
12		Main logic unit, refer to Figure D-2	
13	A30-000-12	Harness earth braid	1
14		Main Door Assembly, Refer to Section B	

## LOWER CABINET ASSEMBLIES

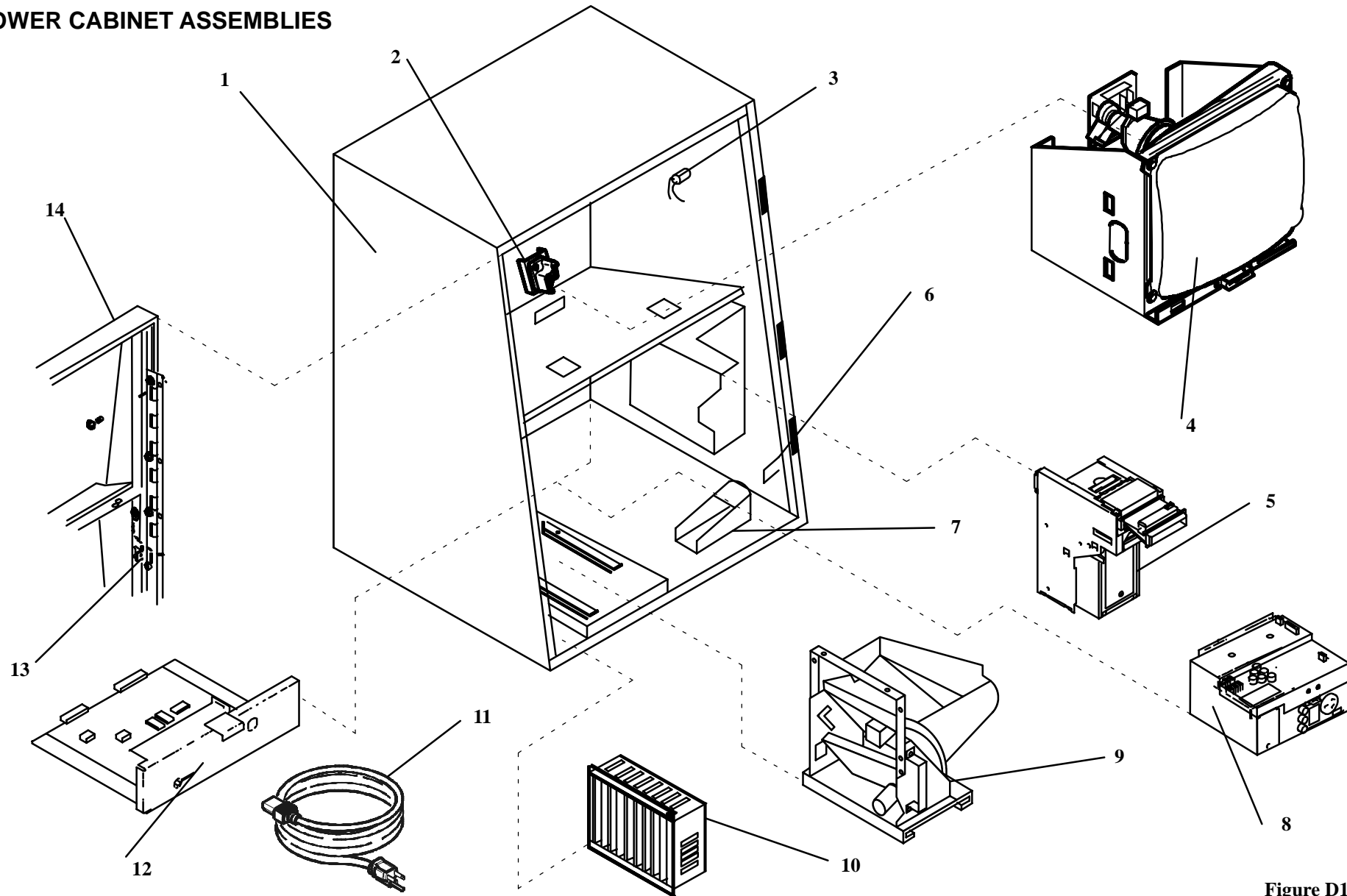


Figure D1

## LOGIC CAGE ASSEMBLIES

Item	Part Number	Description	Qty
1	A76-001-43	Switch power B412C11230000	1
-	A70-006-85	Bracket plug mounting lower module 80960	1
-	A30-007-07	Harness power supply lower module 80960	1
2	A76-001-42	Cover B4FRM Power switch	1
3	A36-003-67	Lower module assembly 80960	1
-	A31-008-35	Frame lower module 80960	1
-	A31-009-54	Frame lower module t/tale 80960	1

Item	Part Number	Description	Qty
-	A31-008-36	Bracket lower module support 80960	1
-	A31-009-44	Bracket auxiliary equipment mounting mini	1
4	A33-901-32 Rev B	Backplane	1
-	A68-030-40	Washer fibre 3mm	8
5	A33-900-71 Rev C	Logic Board	1
6	A31-012-09	Door MPU housing GK2	1

## LOGIC CAGE ASSEMBLIES

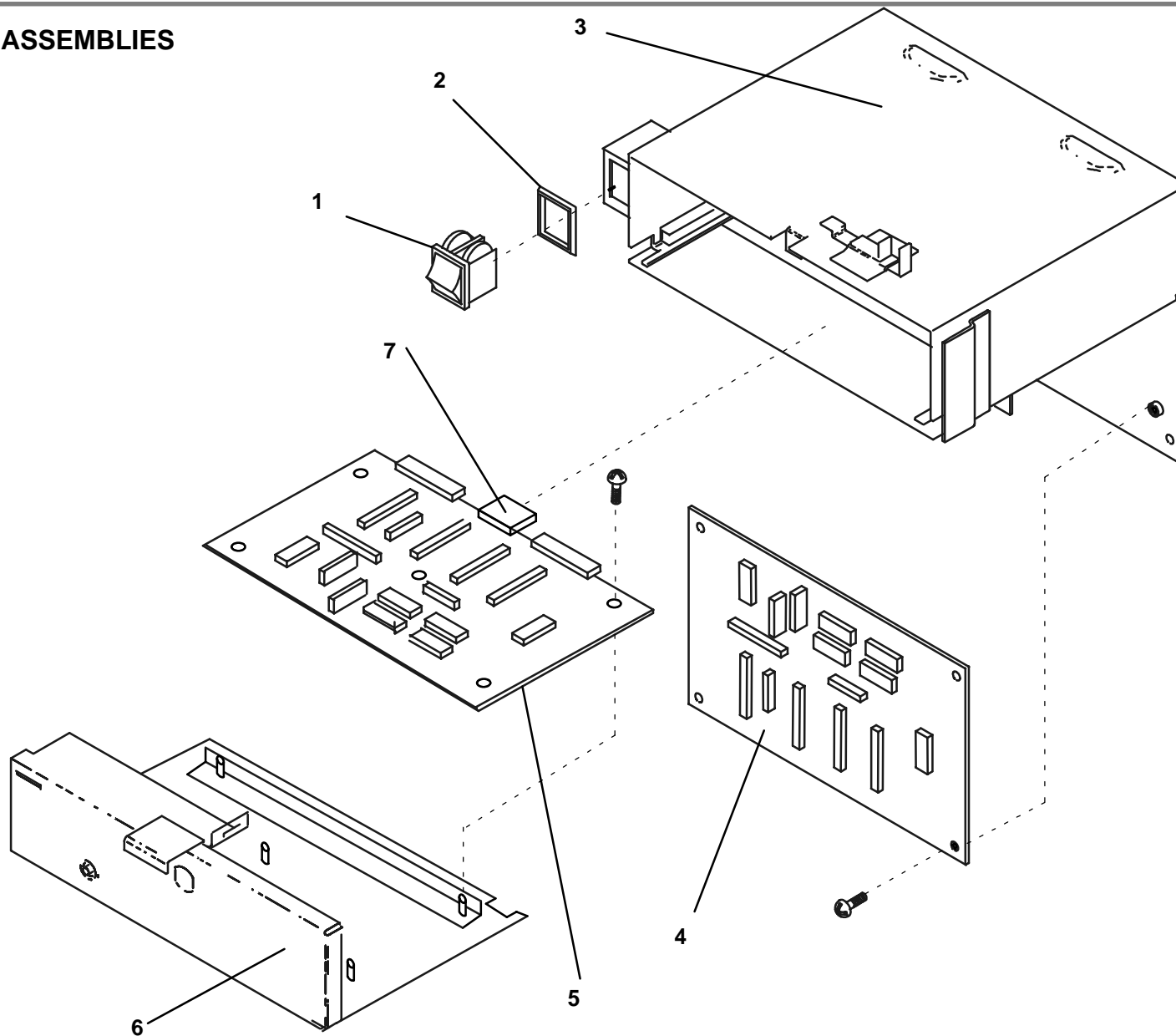


Figure D2

## POWER DISTRIBUTION ASSEMBLY

Item	Part Number	Description	Qty
1	A36-004-63	Power distribution assembly RS422 GK2	1
2	A70-010-69	Cover power dist	1
3	A60-007-12	Fuse holder snap in M-205	6
4	A60-007-45	Fuse 0.5A 20mm fast blow (fuses 4 to 9)	6
5	A76-001-43	Switch power B412C11230000	1
6	A32-001-74	Transformer Assembly ISO GK2 240/230V-0.4A	1
7	A60-990-28	Filter corcom 3EP7M 3AMP 240V	1

Item	Part Number	Description	Qty
8	A66-012-80	Socket 3 pin service 80960	1
9	A60-007-12	Fuse holder snap in M-205	3
9	A60-007-43	Fuse 1.5A 20mm fast blow (fuse 1)	1
9	A60-007-36	Fuse 3A 20mm fast blow (fuse 2)	1
9	A60-007-44	Fuse 0.125A 20mm fast blow (fuse 3)	1
10	A31-012-05	RCD blanking plate	1
11	A36-004-61	Power dist assembly lower GK2	1



# POWER DISTRIBUTION ASSEMBLY

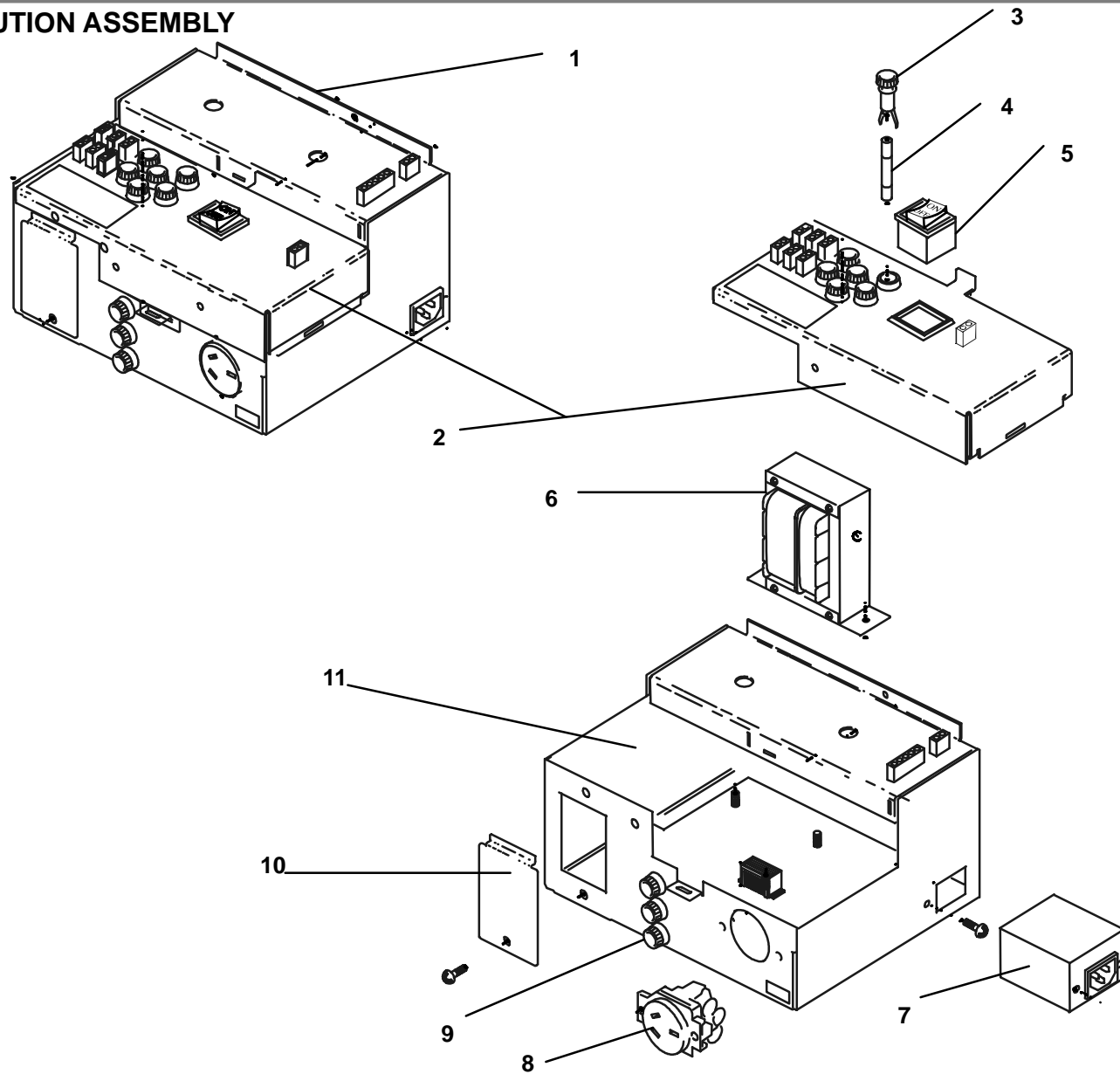


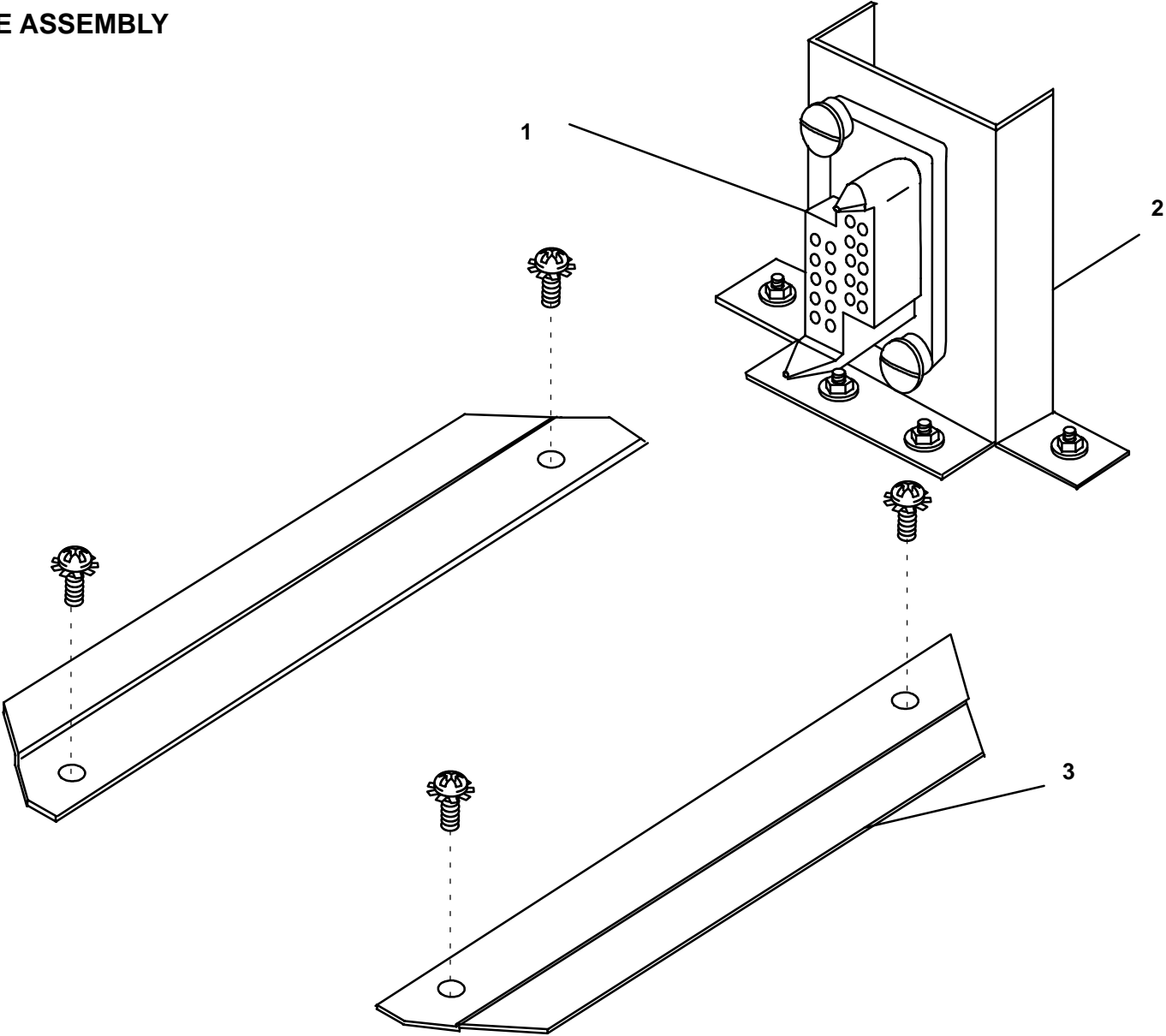
Figure D3

## HOPPER GUIDE ASSEMBLY

Item	Part Number	Description	Qty
	A36-003-76	Guide assembly hopper/printer	1
1	A30-007-16	Harness hopper printer 80960	1

Item	Part Number	Description	Qty
2	626-102-00	Bracket hopper receptacle mounting 80960	1
3	581-291-00	Guide hopper 80960	1

**HOPPER GUIDE ASSEMBLY**



**Figure D4**

## VIDEO MONITOR TOUCH AND NON-TOUCH SCREEN

Item	Part Number	Description	Qty
-	A30-900-44	Monitor Harn extension	1
1	A30-903-37	Harness monitor AC power GU4	1
2	670-154-00	Monitor shelf GU4	1
3	754-314-90	Microtouch Touch screen RS232 controller (SMT3E 14-701)	1
-	625-622-90	Sensor touch screen GU4 (13-2061-01)	1
<b>Monitor KORTEK (All States except QLD)</b>			
4	A60-002-30	Monitor 18V KORTEK 26DP GU4 T/S	1
4	A60-002-31	Monitor 18V KORTEK 26DP GU4 NO T/S	1
5	A70-010-94	Chassis monitor 19" GU4	1
6	KT19-N51	Cathode Ray Tube (CRT)	1
7	KT19N-N51	CRT Board	
8	KT19M-N51	PCB Monitor Main	
9	KT19R-N51	Monitor Adjustment Board	
10	A76-001-38	Switch rocker S40 3340-051-01	1

Item	Part Number	Description	Qty
<b>Monitor TOVIS (QLD State)</b>			
4	A60-002-34	Monitor 18V TOVIS 26DP GU4 T/S QLD STATE	1
4	A60-002-35	Monitor 18V TOVIS 26DP GU4 NO T/S QLD STATE	1
5	A70-010-94	Chassis monitor 19" GU4	1
6	5CT43M46EJ	Cathode Ray Tube (CRT)	1
7	12121VMBNE	CRT board	1
8	12101VMBMA	PCB Monitor Main	1
9	5CB4C19050	Monitor Adjustment Board	1
10	A76-001-38	Switch rocker S40 3340-051-01	1

## VIDEO MONITOR

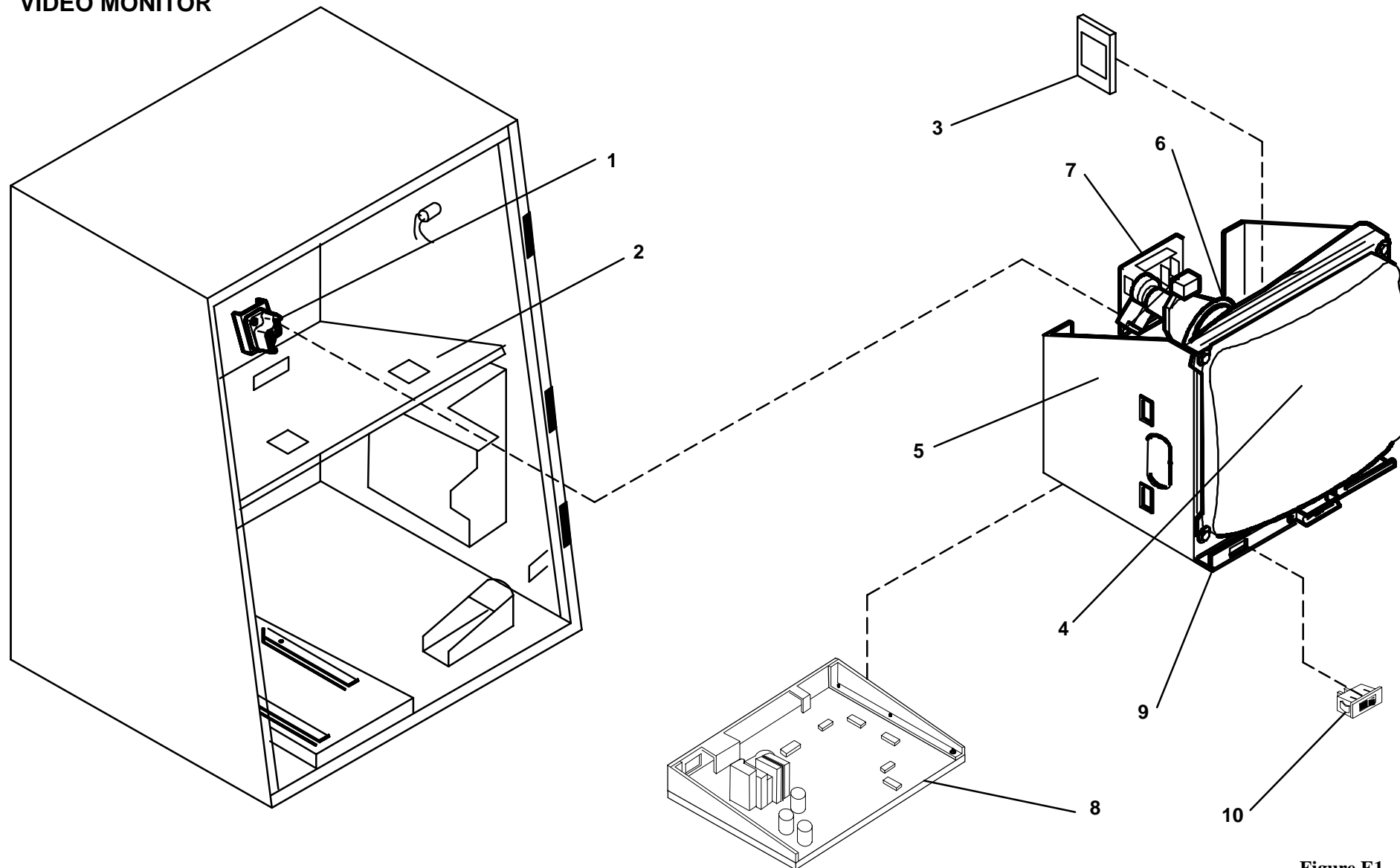


Figure E1

## PINWHEEL HOPPER

Item	Part Number	Description	Qty
	A35-002-98	Hopper Assembly	1
1	379-048-90	Optics Assembly Hopper DC	1
2	A67-060-12	Cable tie 75mm H31820	1
3	A31-006-40	Deflector coin Hpr	1
4	681-040-00	Wiper Coin Metal Hpr	1
5	582-035-00	Hub Hopper Pinwheel	1
6	284-016-00	Shim pinwheel .010 thick	1
7	588-082-00	Pinwheel hop 14 pin double	1
8	A70-001-05	Coin disc \$1 Aus	1
8	575-055-21	Coin disc .977 - 1.016 14G	1
9	632-032-00	Baffle spr bowl small coin	1
10	589-517-00	Plate baffle spr bowl	1
11	632-025-00	Hopper baffle w/bend	1
12	620-035-00	Hopper Bowl side bowl	1
-	330-020-00	Spring .430D x 2.75 x .057w	1
-	A77-011-25	Label refill selectable	1
13	312-036-90	Stand off 10-32 hex .50L nylon	1
14	331-051-00	Spring comp hopper bowl	2

Item	Part Number	Description	Qty
-	331-052-00	Spring comp .058w hopper bowl	2
15	572-008-00	Agitator low profile hopper	1
16	647-202-00	Frame hopper DC motor 80960	1
17	380-011-00	Handle hopper	1
18	350-032-90	Motor hopper side eject DC 960 V2	1
-	605-068-01	Harness hopper assembly	1
-	605-068-02	Harness hopper assembly	1
19	389-005-00	Handle support super hopper	1
20	754-265-01	PC assembly hopper driver 80960	1
20	754-265-03	PC assembly hopper driver 80960 V3	1
20	A33-900-29	PC assembly hopper driver 960	1
21	574-036-00	Deflector coin hopper	1
22	585-064-00	Knife hopper hd plastic large coin	1
22	585-030-00	Knife hopper hd plastic large coin	1
-	589-374-00	Plate knife stiffener	1
23	649-069-00	Housing hopper with hub	1

# PINWHEEL HOPPER

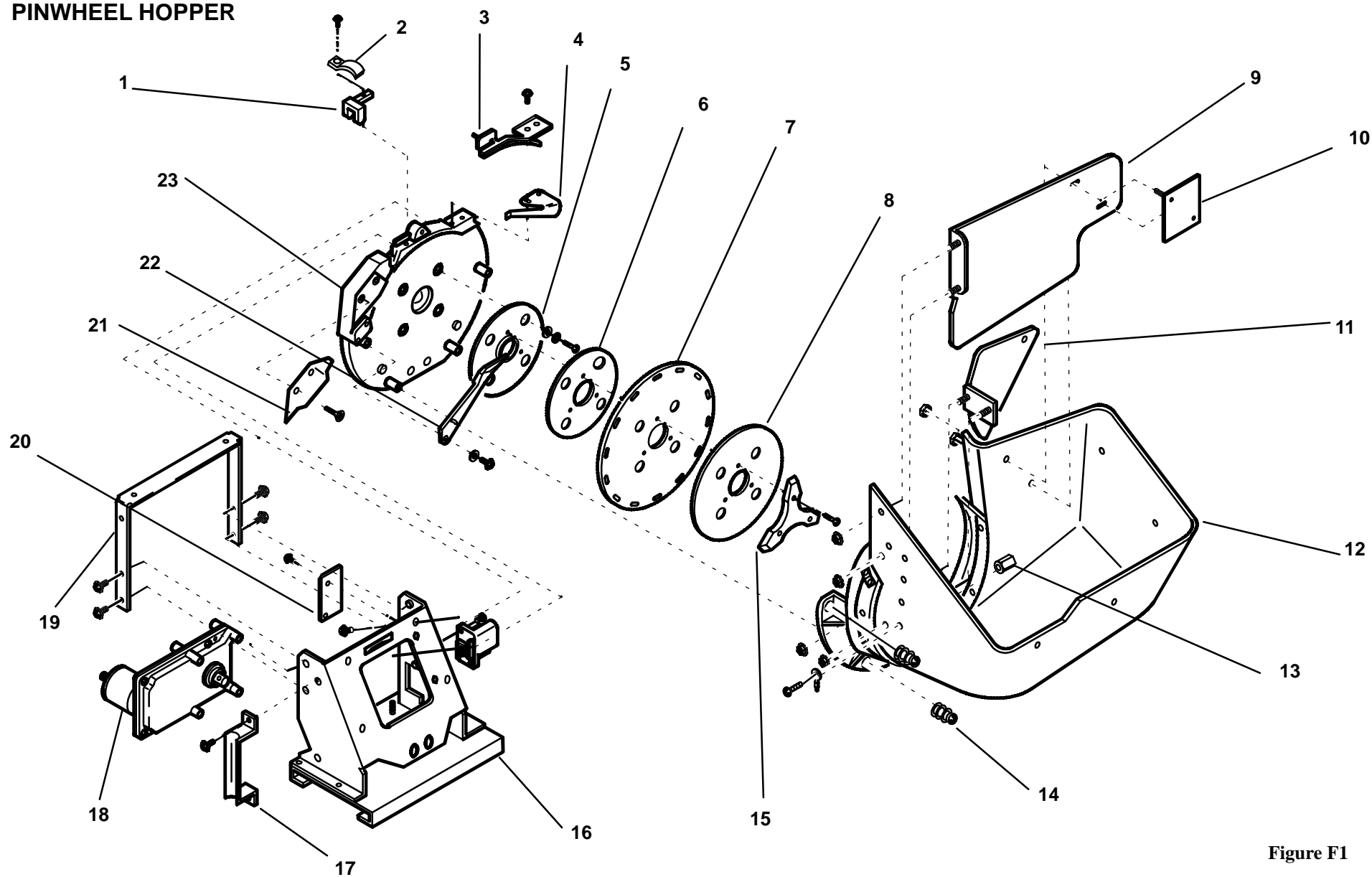


Figure F1

## COIN IN ASSEMBLY

Item	Part Number	Description	Qty
1	A36-002-37*	Coin entry assembly, Refer to Figure J-1	1
2	A75-000-45	Coin Validator S7, AUS	1
2	A75-000-48	Coin Validator S7, NZ	1
3		Harness coin handling	1
4	A71-001-98	Cover coin entry solenoid	1
5	450-038-00	Solenoid assembly 24VDC cont W/DVDT	1
-	331-060-00	Spring comp DC coin in	1
-	335-001-00	Spring torsion	1
6	754-212-01	PC assembly diverter detection ver.2	1
7	312-056-00	Cam post	1
-	A69-010-24	Cam coin diverter	1
-	439-058-00	Washer cam post	1
8	753-063-01	PC assembly optic emitter/detector 960	1
8	753-063-02	PC assembly optic emitter/detector 960	1
-	753-062-03	PC assembly optic detector 80960	1
-	A65-007-03	Cable jump 4W HM7560	1
-	653-131-90	Clip mini self adhesive	1

Item	Part Number	Description	Qty
9	584-054-14	Insert UCS 10cent Aus	1
9	584-054-04	Insert UCS version 04	1
9	584-054-12	Insert UCS version 12	1
10	649-042-01	Housing encoder U/C	1
10	649-121-00	Housing encoder L/coin in	1
11	753-063-02	PC assembly optic emitter/detector 80960	1
11	753-061-02	PC assembly optic emitter 80960	1
12	576-036-00	Diverter UCS 2	1
13	573-260-00	Reject chute mod UCS	1
13	573-385-00	Reject chute mod UCS	1
14	A36-001-42	Chassis assembly GK2	1
14	A36-001-50	Chassis assembly \$1 90 D/C WOH GK2	1
-	A20-008-16	Kit chassis 90 D/C WOH GK2	1
15	446-032-00	Clip acceptor UCS	4
16	653-242-00	Mounting chassis II	1



# COIN IN ASSEMBLY

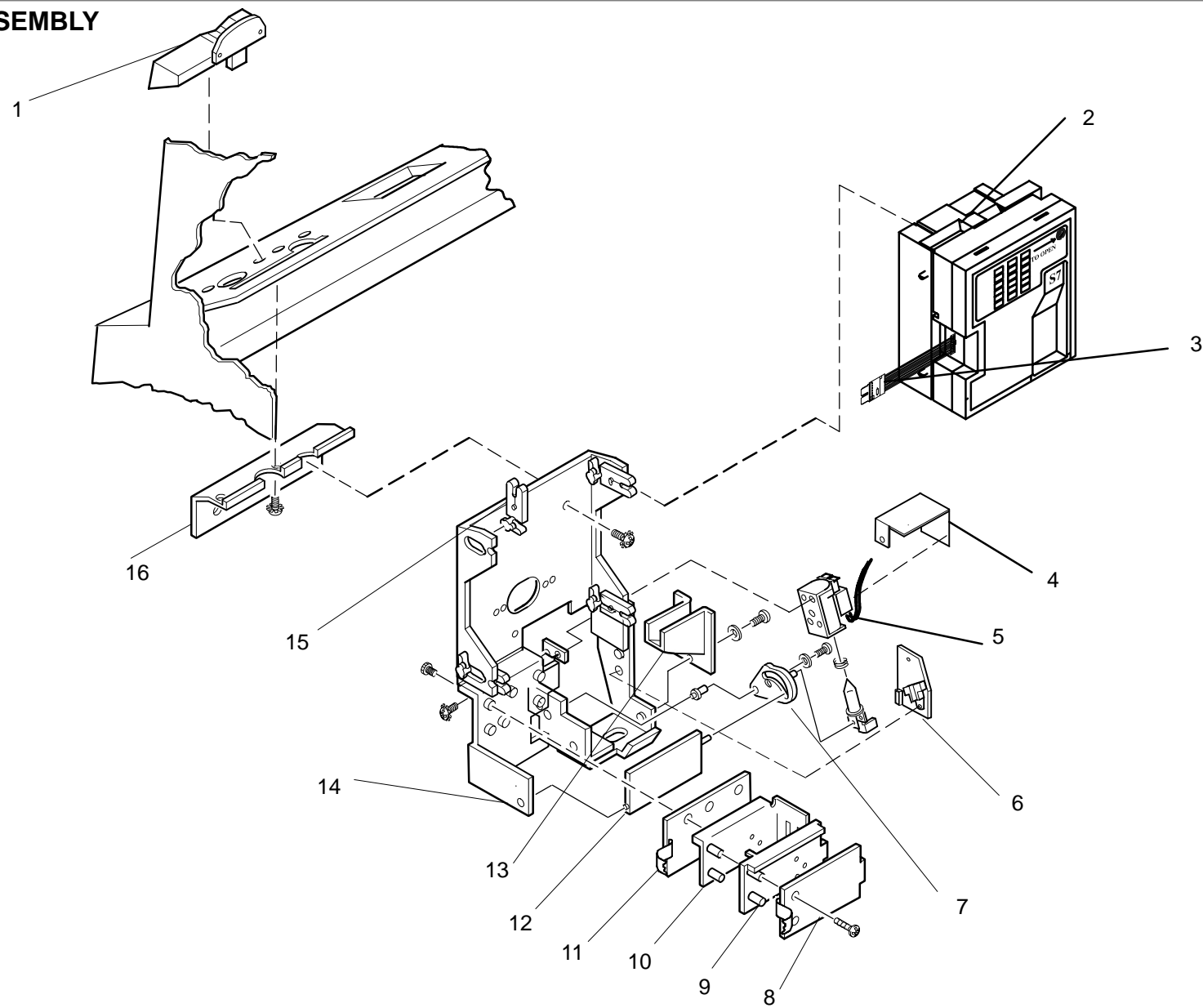


Figure G1

## WORLD BILL ACCEPTOR (WBA)

Item	Part Number	Description	Qty
1	A36-004-58	WBA housing assembly	1
-	A30-901-43	Harness Bill Acceptor Housing Internal	1
-	A30-901-42	Harness Bill Acceptor Housing Strain Relief	1
-	A30-903-27	Harness Bill Acceptor GU4	1
-	A36-004-56	Plate locking assembly WBA housing	1
-	A76-001-48	Switch submini rolr levr 2.8mm	1
-	A31-010-09	Bracket mtg switch uni B/A Hsg #2	1
-	A70-008-60	Guide WBA cash box	1
-	A36-004-57	Guide assembly WBA entry 960	1
-	A31-010-96	Door WBA housing	1
-	A75-000-28	KCM-300 WBA10 (First Fit-2500 to 3000)	1
-	A75-000-46	WBA 11	1
-	A75-000-49	WBA 12 (Running Change after First Fit)	1
-	A75-000-47	WBA 20, NZ	1

Item	Part Number	Description	Qty
2		Chassis Assembly	1
3	500-382-00	Cash box WBA	1
4	A36-004-57	Assembly WBA entry	1
5		Sensor Assembly	1
6		Transport Assembly	1
-	447-078-90	Ring inside retaining .125dia	1
-	A30-903-27	Harness bill acceptor GU4	1
-	A33-900-61	PCA bill guide light GK2	1
-	751-121-30	PCO bill guide light 80960	1
-	A59-000-66	LED red spr bright clear 3mm	12
-	688-714-00	Cover B/A guide light 80960	1

## WORLD BILL ACCEPTOR

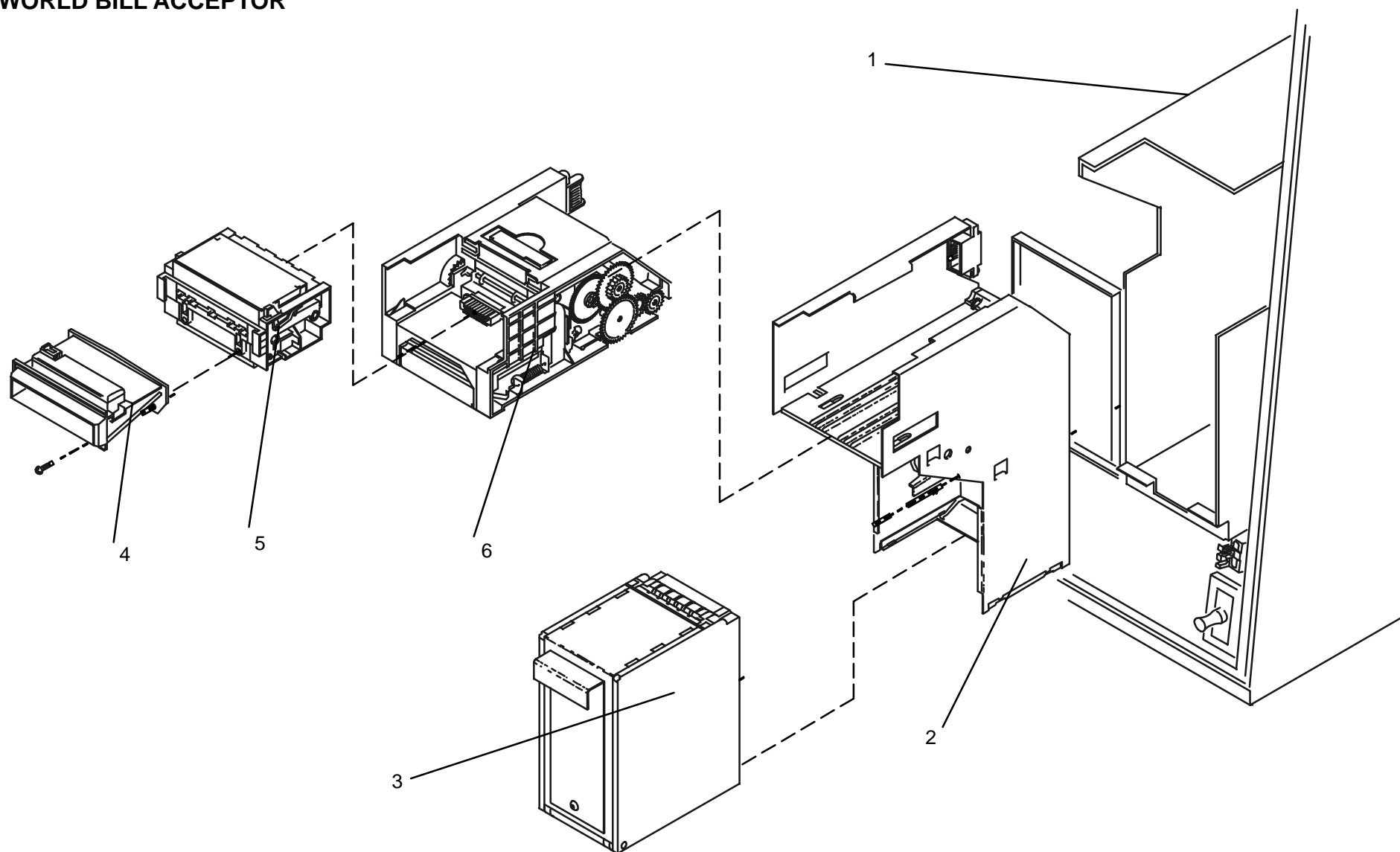


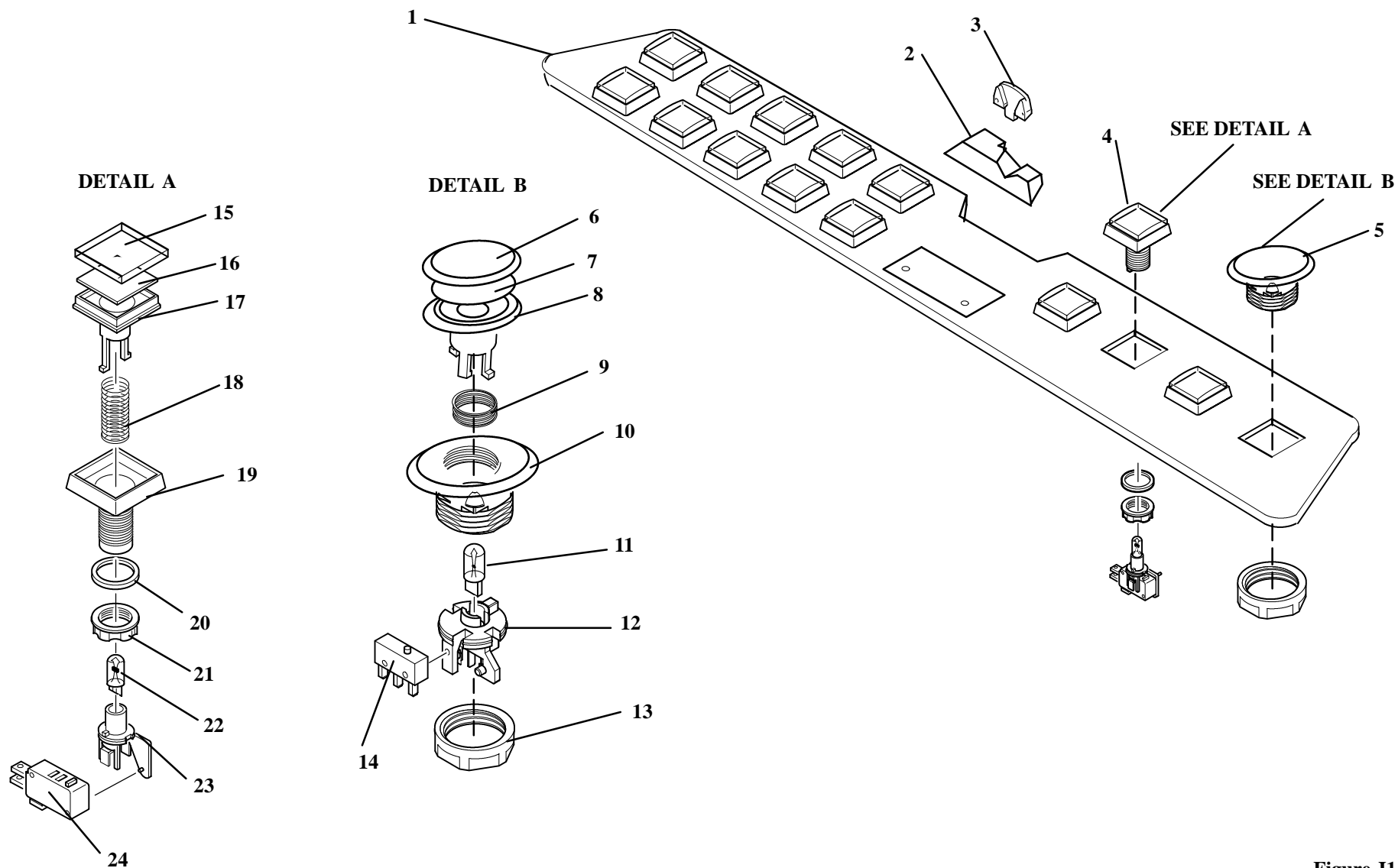
Figure H1

## PLAYER PANELS

Item	Part Number	Description	Qty
1	A31-122-00XX	Button Panel 10 x 2	
1	A31-123-00XX	Button Panel 10 x 4	
	A36-002-37*	Coin entry assembly	1
2	A69-002-00	Coin entry base chrome	1

3	A69-004-01	Coin entry back \$1 Aus L/P chrome	1
3	A69-005-01	Coin Entry back \$1 Aus L/P gold	1
4	A76-030-10	Button small square CPM 14V bk	1
5	A76-030-20	Button oval	1

# PLAYER PANELS



**Figure J1**

## MISCELLANEOUS

### CAM LOCKS

Item	Part Number	Description	Qty
	A70-006-49	Cam door lock Univ	1
	A70-008-40	Cam lock IBA DR#1	1
	A70-008-10	Cam lock cash box abloy SP0030	2

Item	Part Number	Description	Qty
	A68-030-03	Washer Flat M6	1
	A67-030-08	Washer 3/4 X 1 1/8 OD SHIM	4

**Note:** some operators supply and fit thier own locking devices. These locking devices will therefore not be found in the above table and in such a case the operator should be consulted in order to replace the lock.

### MACHINE COLOURS

The GU4 series machines are available in a large number of optional external colour finishes. Some parts are not available in all colour options and these specific parts are listed in separate tables below.

To order a colour specific part, the standard eight digit order code for that part is used followed by the two digit colour code for the colour required.

Code No.	Colour Finish	Code No.	Colour Finish
00	Raw	38	Silver spangle powder coat
01	Burgundy Pinstripe laminate	39	Evode gold powder coat
02	Black Pinstripe laminate	40	Dune texture laminate
03	Blue laminate	41	Queen victoria laminate
04	Stardust laminate	42	Mission white laminate

05	White Matt laminate	43	Marl beige laminate
Code No.	Colour Finish	Code No.	Colour Finish
06	Red powder coat	44	Grey nurse powder coat
07	Gold laminate	45	Black granite laminate
08	Grey laminate	46	Claret ripple powder coat
09	Blackwood velvet laminate	47	Horizon white ripple powder coat

10	Black Matt powder coat	48	Merino white powder coat
11	Beige powder coat	49	Black onyx powder coat
<b>Code No.</b>	<b>Colour Finish</b>	<b>Code No.</b>	<b>Colour Finish</b>
12	Black quarry laminate	50	Ebony oxide formica laminate (cust. property)
13	Bright gold laminate	51	Wilson art chiffon laminate (cust. property)
14	Burgundy matt laminate	52	Silk green laminate (cust property)
15	-	53	Black chrome plate
16	-	54	Alpha-tech light grey powder coat
17	Chrome plated	55	Char blue formica velvet laminate
18	White gloss laminate	56	Graphite graphics quarry laminate
19	Black gloss laminate	57	Off white leather powder coat
20	Dusty jade laminate	58	Primrose ripple powder coat
21	Hunter Nebula laminate	59	Anotec white powder coat
22	Graphite graphics gloss laminate	60	Charcoal ripple powder coat 81515 (cust. property)
23	Dark Cranberry laminate	61	White birch gloss powder coat dulux 37131

24	Slate valet laminate	62	Selenio brush gold laminate
<b>Code No.</b>	<b>Colour Finish</b>	<b>Code No.</b>	<b>Colour Finish</b>
25	Morning haze gloss laminate	63	Cream gloss powder coat dulux 51648
26	Birdseye jara veneer gloss laminate	64	Lawn green gloss powder coat 280C
27	Black grain dimension laminate	65	Siganl red gloss powder coat 5450C
28	Cherry stone velvet laminate	66	Golden yellow gloss powder coat 1487C
29	Peacock dust cherry laminate	67	French blue gloss powder coat 347C
30	Sarsen grey gloss powder coat	68	Light grey riple powder coat dulux 50766 OLYMPIC
31	Burgundy gloss laminate	69	Black ripple powder coat dulux 50003 OLYMPIC
32	Wilson art midori velvet laminate	70	Special white gloss powder coat 81880
33	Black ripple powder coat	71	Anodic bronze satin powder coat 19930
34	Gold plate	72	Charcoal metallic gloss powder coat 18796
35	Vanilla quarry laminate	73	-
36	Black powder coat	74	Panorama subway (fabric)
37	Gold spangle powder coat	75	Nylex colbk vinyl

## BUTTON INSERTS



## BUTTON INSERTS

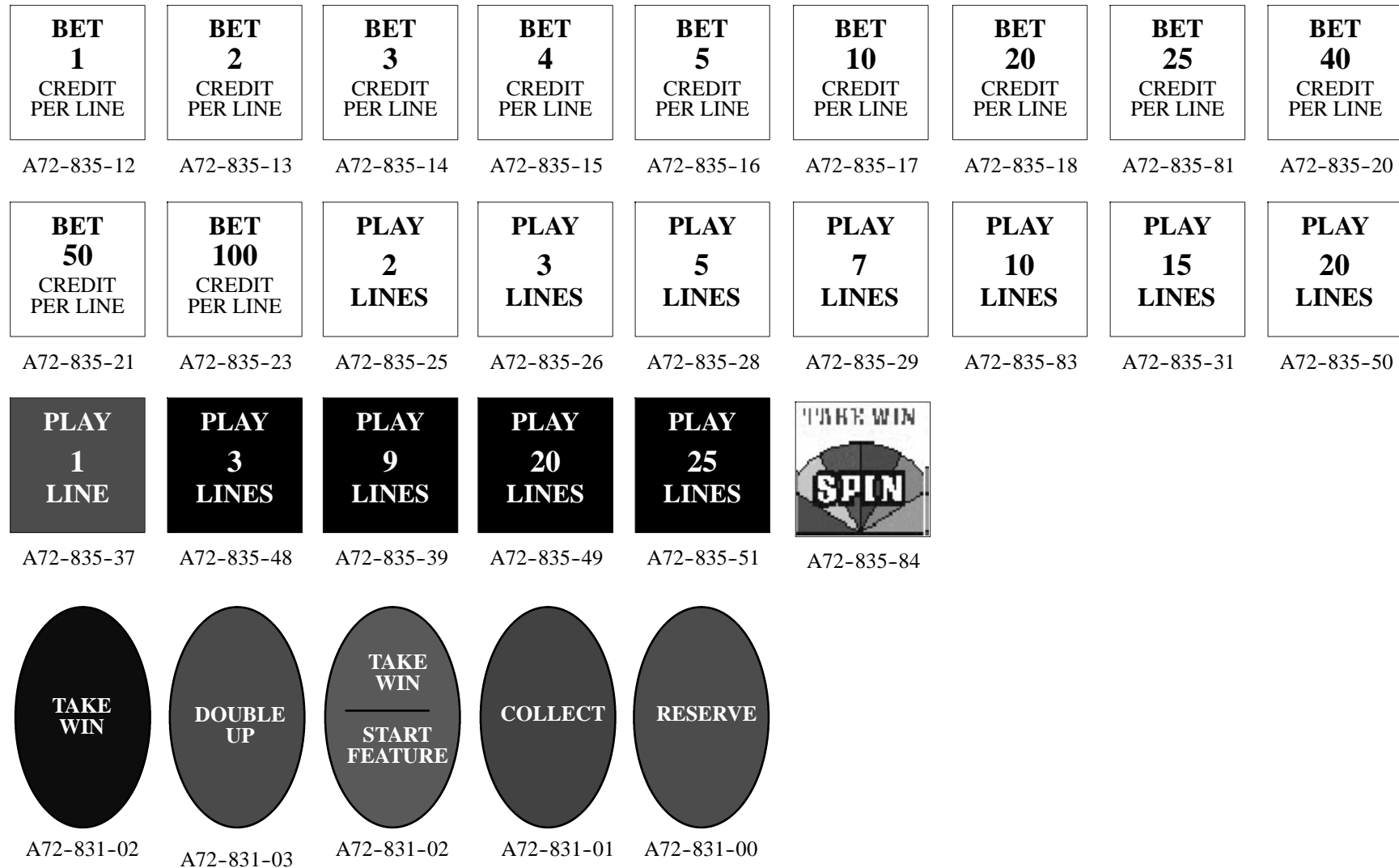


Figure K1

## BUTTON INSERTS

<b>BET</b> <b>1</b>	<b>BET</b> <b>2</b>	<b>BET</b> <b>3</b>	<b>BET</b> <b>4</b>	<b>BET</b> <b>5</b>	<b>BET</b> <b>10</b>	<b>BET</b> <b>20</b>	<b>BET</b> <b>25</b>	<b>BET</b> <b>40</b>
KPBI-508	KPBI-509	KPBI-510	KPBI-511	KPBI-514	KPBI-530	KPBI-540	KPBI-592	KPBI-598
<b>BET</b> <b>50</b>	<b>BET</b> <b>100</b>	<b>2</b> <b>LINES</b>	<b>3</b> <b>LINES</b>	<b>5</b> <b>LINES</b>	<b>7</b> <b>LINES</b>	<b>10</b> <b>LINES</b>	<b>15</b> <b>LINES</b>	<b>20</b> <b>LINES</b>
KPBI-543	KPBI-549	KPBI-565	KPBI-566	KPBI-567	KPBI-570	KPBI-604	KPBI-602	KPBI-605
<b>1 LINE</b> <b>RED</b>	<b>9 LINES</b> <b>BLACK</b>	<b>20 LINES</b> <b>BLACK</b>	<b>25 LINES</b> <b>BLACK</b>	<b>DOUBLE</b> <b>UP</b> <b>RESERVE</b>	<b>RULES</b>	<b>TAKE WIN</b> <b>START</b> <b>FEATURE</b>	<b>COLLECT</b>	
KPBI-5017	KPBI-594	KPBI-603	KPBI-5002	KPBI5014	KPBI5013	KPBI-5015	KPBI-5018	

**Figure K2**