

Protocol converter ID003 to ID024 (Netplex).

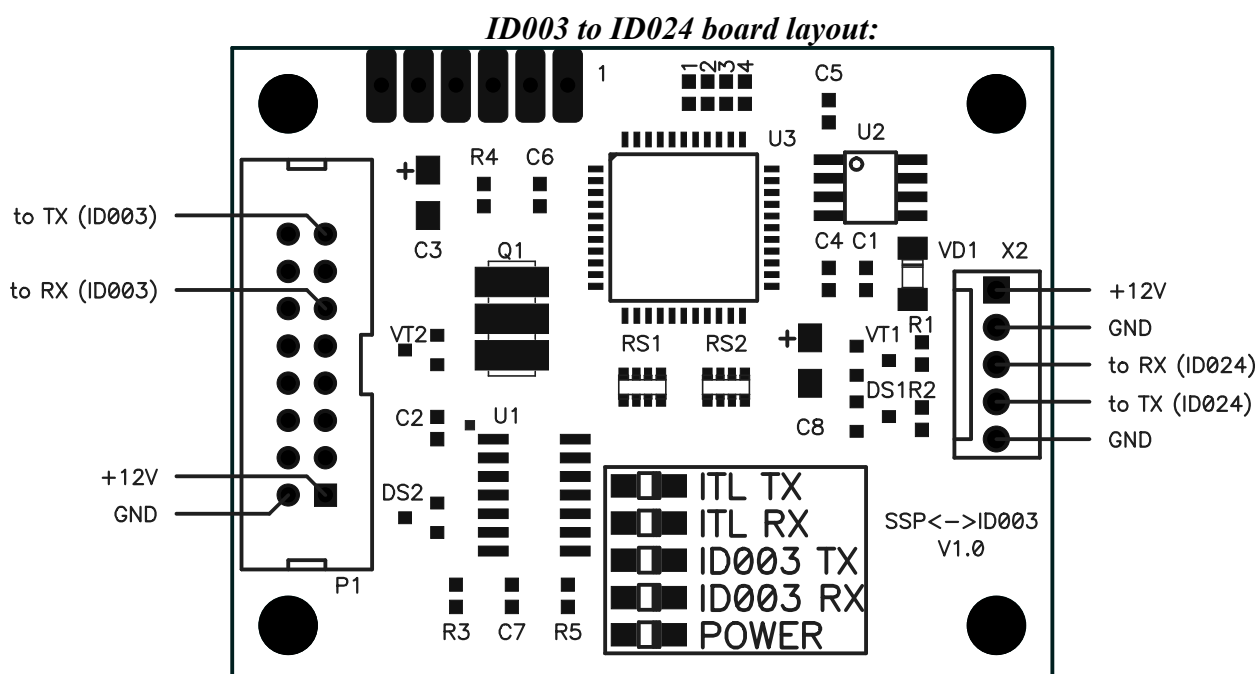
This board may be used to connect JCM bill acceptors **EBA-1x, EBA-2x, EBA-3x, UBA-1x*, WBA-1x, WBA-2x** and CashCode bill acceptors **MFL Series (optical interface), MSM Series и MVU Series** to IGT gaming machines supporting ID024 (Netplex) protocol.

Connection

Connect bill acceptors to P1 (IDC16 type). See Pic.1:

Connector P1:	EBA-1x/2x:	EBA-3x:	UBA-1x*, WBA-2x:	WBA-1x, MFL:	MSM, MVU:
1 +12V	1,3	1,3	1,5	1,3	1(Power)
2 GND	2,4	2,4	2,7,13	4,7	2(Power)
11 to RX ID003	26	7	6	9	16(Interface)
15 to TX ID003	25	5	4	8	11(Interface)

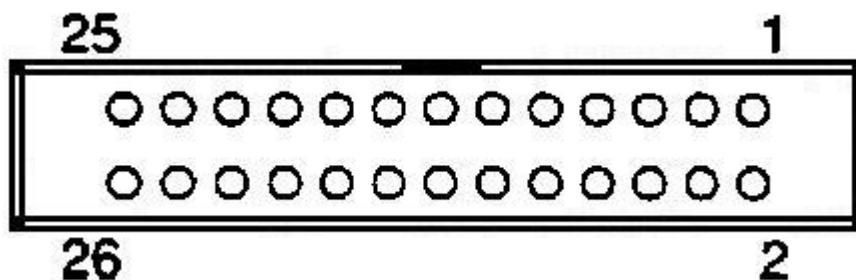
***NOTE:** when connecting UBA-10/11/12 select optically isolated interface type using jumpers on the UBA CPU board (see JCM UBA-1x Series Manual).



All output lines are OC (+12V max.).
All input lines have pull-up resistors to +5 V.

Pic. 1.

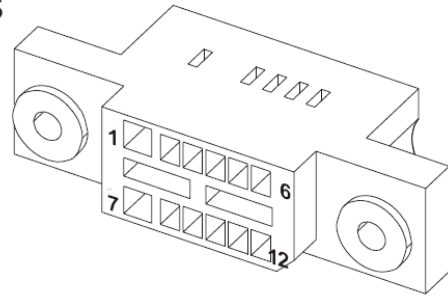
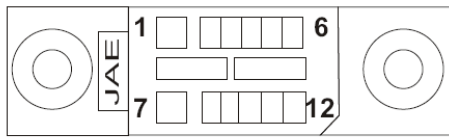
Connector EBA-1x/2x (when looking at bill acceptor):



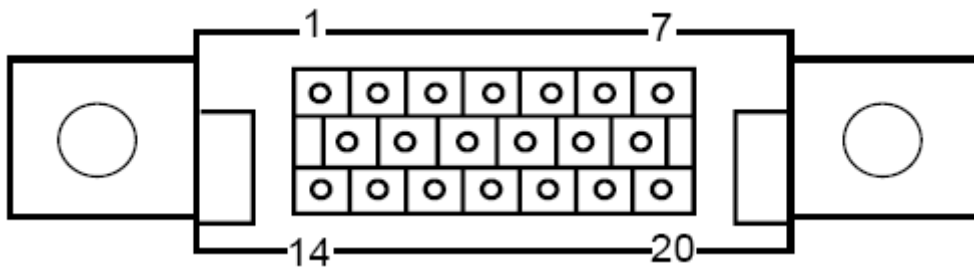
Connector WBA-1x, MFL Series:

Figure 3

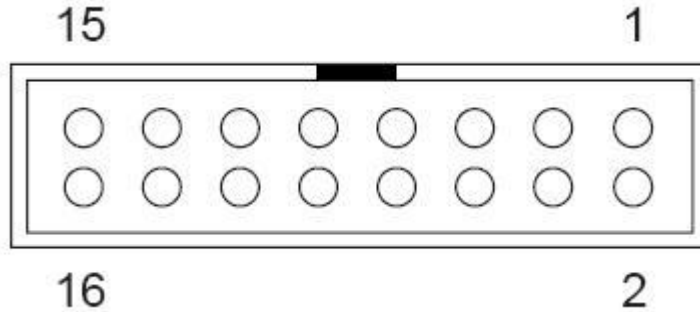
TOP VIEW
JAE DR12-2S



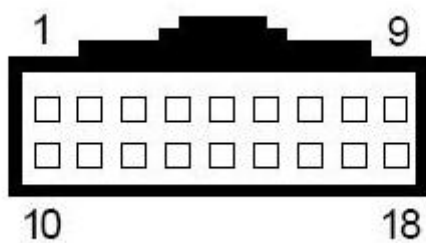
Connector UBA-1x, WBA-2x (when looking at bill acceptor):



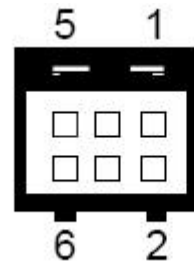
Connector EBA-3x (when looking at bill acceptor):



Connector MSM/MVU Series (when looking at bill acceptor):



Interface

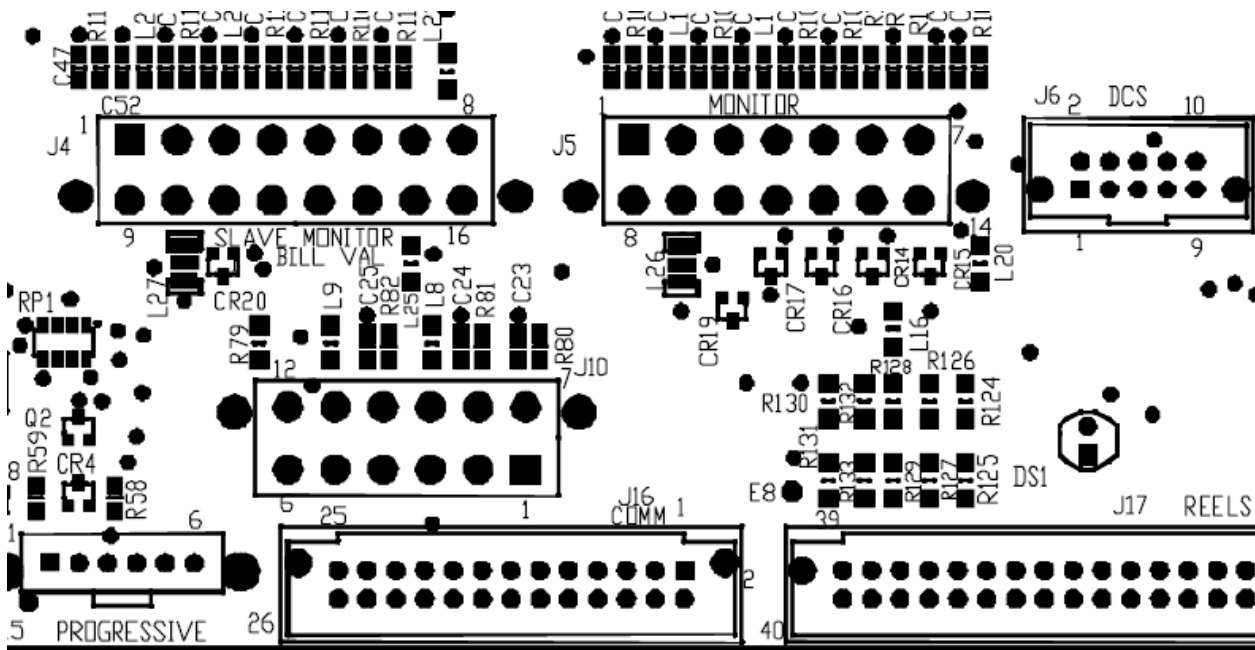


Power

Connector X2 used for host gaming machine

Connector X2:	Connector J 10 on IGT Mother Board
1 +12V	1
2 GND	2
3 TX DATA	8
4 RX DATA	10
5 GND	11
NOTE: connect together 5 and 6 pins of IGT (J 10) connector	

IGT Mother Board layout (fragment):



After connecting the bill acceptor to the IGT host machine using converter board IGT will show error: **Bill Validator CRC Mismatch**. Clear this error using test menu.