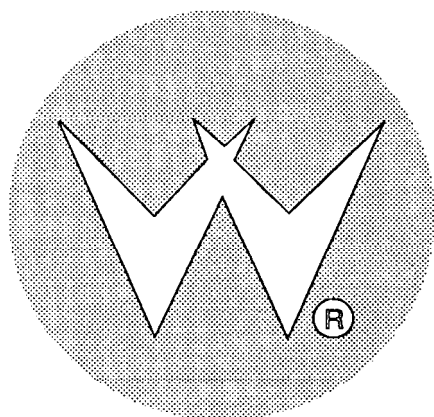


16-9238  
April 1991

# ELECTRONIC COIN DOOR Service Pamphlet



WILLIAMS ELECTRONICS GAMES, INC.

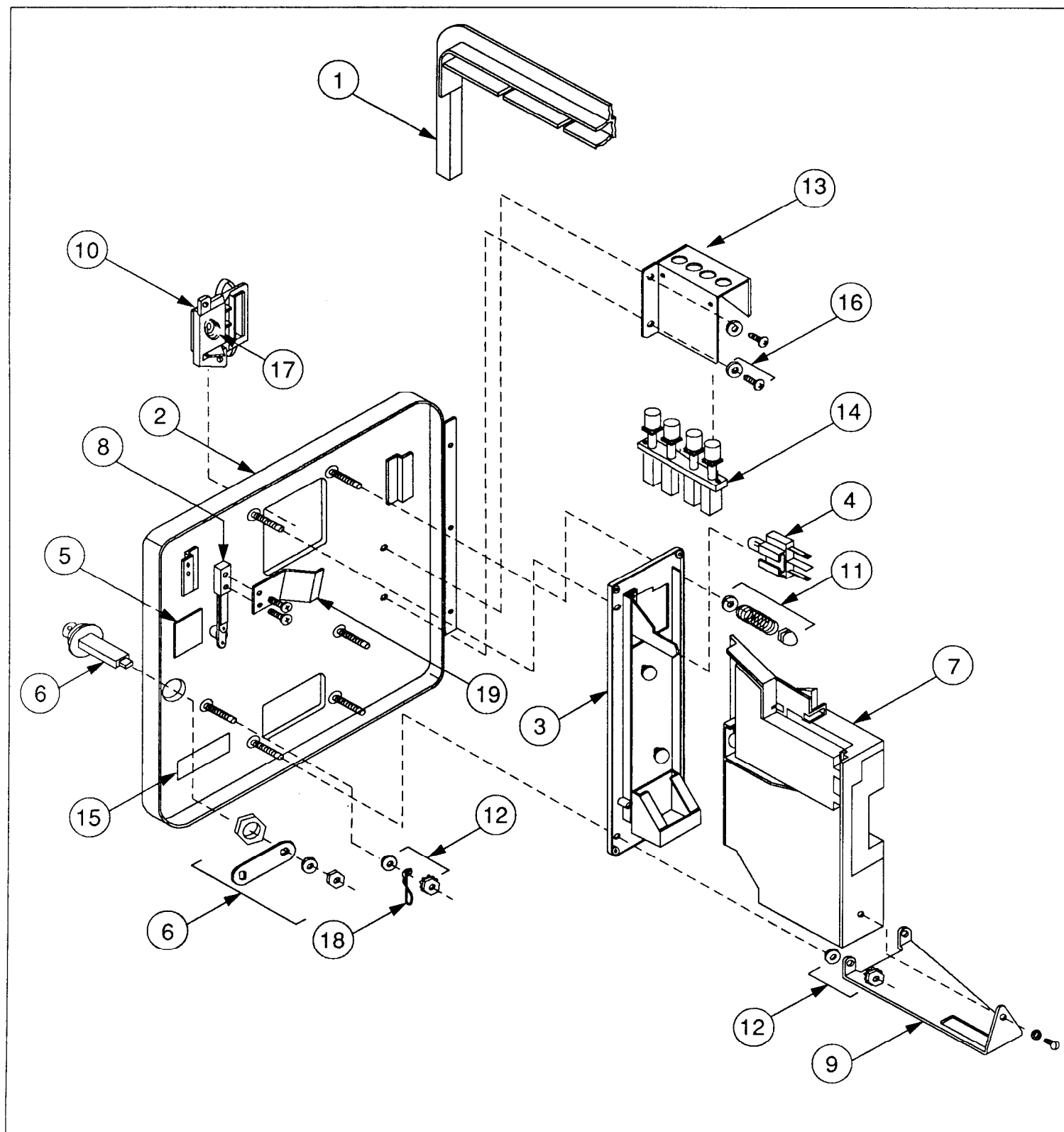


MIDWAY MANUFACTURING COMPANY

# Electronic Coin Door Assembly

p/n A-14742-x

(x= Country Designator)



WILLIAMS ELECTRONICS GAMES, INC. AND MIDWAY MANUFACTURING COMPANY RESERVE THE RIGHTS TO MAKE MODIFICATIONS AND IMPROVEMENTS TO THEIR PRODUCTS.

THE SPECIFICATIONS AND PARTS IDENTIFIED IN THIS MANUAL ARE SUBJECT TO CHANGE WITHOUT NOTICE.

# Electronic Coin Door Assembly

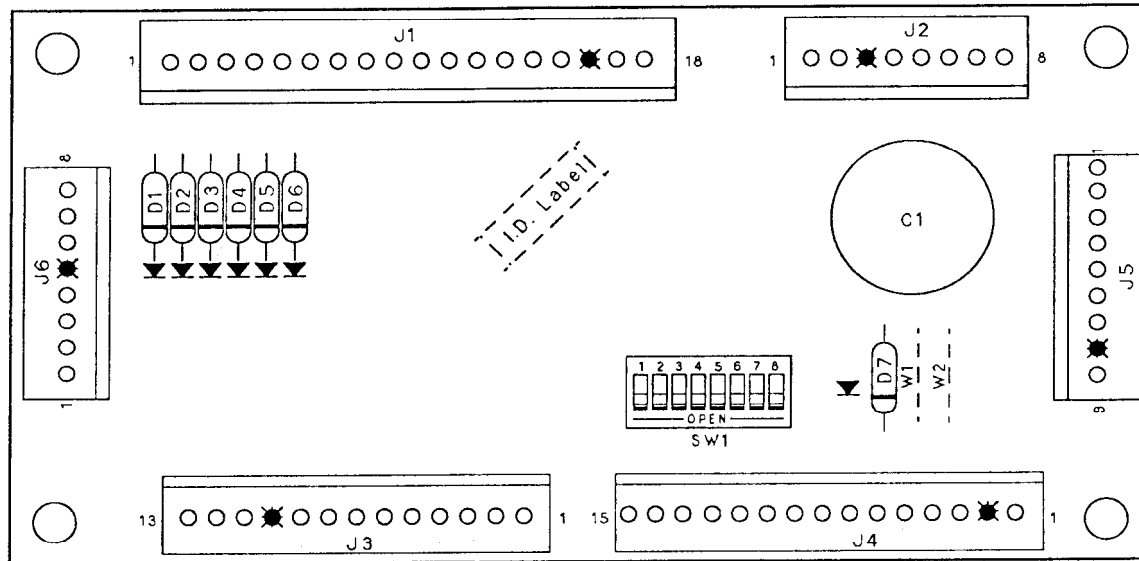
**A-14742-x**

("x" is the country designator)

Item	Part No.	Description
1	27-2006	Coin Door Frame
2	27-2007	Coin Door
3	27-2008	Holder Plate Assembly (includes Plate, E/R Button, Lamp Bracket, Coin Label, & Coin Return: Specify Country/Coin Info)
4	27-2001	Lamp, #259
	27-2010	Lamp Socket
5	27-2002	Insulator
6	27-2003	Lock Assembly
7	27-2011	Sentinel 29 Coin Acceptor: Specify Country/Coin Info
8	27-2005	Slam Tilt Switch
9	27-2014	Holder Bracket
10	27-2012	E/R Button with Label: Specify Country/Coin Info
11	27-2015	Spring
	27-2016	Flatwasher, #6
	27-2017	Acorn Nut, 6-32
12	27-2016	Flatwasher, #6
	27-2018	Keps Nut, 6-32
13	01-9885	Mounting Bracket, Diagnostic Switch
14	5641-12724-00	Diagnostic Switch
	03-7601-4	Button, Red
	03-7601-7	Button, Black
	16-9166-1	Label, Diagnostic Switch
	16-9166	
15	27-2013	Label, Coin Info: Specify Country/Coin Info
16	4104-01001-06	Sh Mtl Screw, #4x3/8", Phillips Type A
	4700-00003-00	Flatwasher, #4
17	27-2019	Spring, E/R Button
18	12-6230	Wire, Keyhook
19	27-2025	Bracket - Slam Tilt Switch
	H-14736	ECA Door Cable (Not Shown)

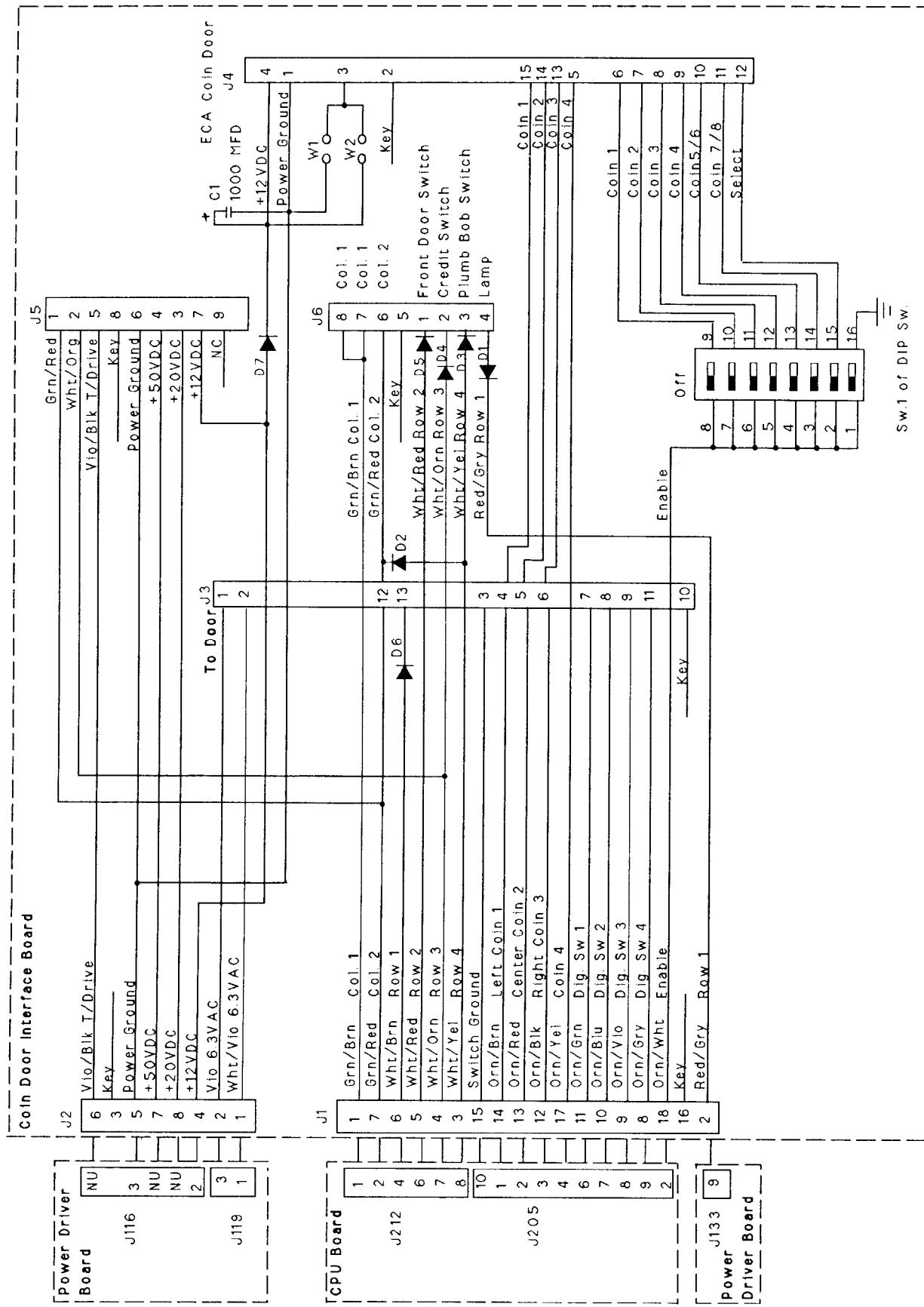
## A-14689-1 Coin Door Interface Board

(Located in cabinet next to coin door)



Item	Part Number	Ckt Designator	Description
1	5768-12855-00		Coin Door PCB
2	5070-09054-00	D1-D7	Diode, 1N4004, 1A
3	5791-10862-18	J1	Header, 18-pin, Str., Sq.
4	5791-10862-08	J2, J6	Header, 8-pin, Str., Sq.
5	5791-10862-13	J3	Header, 13-pin, Str., Sq.
6	5791-10862-15	J4	Header, 15-pin, Str., Sq.
7	5645-09025-00	SW1	8 DIP Switch, 8 position
8	5010-09534-00	W2	Res., 0Ω
9	16-8850-356		I.D. Label

Note: C1 and J5 are not used.



A-14689-1  
Coin Door Interface Board Schematic

**Coin Door Interface Board  
DIP Switch Chart**

SWITCH	ON	OFF
Switch #1	Enable Coins	Disable Coins
Switch #2	Select 8 Coin	Select 4 Coin
Switch #3	Enable Coin 7 & 8	Disable Coin 7 & 8
Switch #4	Enable Coin 5 & 6	Disable Coin 5 & 6
Switch #5	Enable Coin 4 (A4)	Disable Coin 4 (A4)
Switch #6	Enable Coin 3 (A3)	Disable Coin 3 (A3)
Switch #7	Enable Coin 2 (A2)	Disable Coin 2 (A2)
Switch #8	Enable Coin 1 (A1)	Disable Coin 1 (A1)

**DIP Switch Settings**

I. France

Switch #1= On  
 Switch #2= Off  
 Switch #3= On, 10Fr New  
 Switch #4= Off  
 Switch #5= Off  
 Switch #6= On, 10Fr Old  
 Switch #7= On, 5Fr  
 Switch #8= Off, 1Fr

II. Belgium

Switch #1= On  
 Switch #2= Off  
 Switch #3= Off  
 Switch #4= On, 5Fr, Pre/85  
 Switch #5= Off  
 Switch #6= On, 50Fr  
 Switch #7= On, 20Fr  
 Switch #8= On, 5Fr, Post/85

III. England

Switch #1= On  
 Switch #2= Off  
 Switch #3= Off  
 Switch #4= Off  
 Switch #5= On, 10 Pence  
 Switch #6= Off  
 Switch #7= On, 50 Pence  
 Switch #8= On, 1 Pound

**Coin Door Interface Board  
DIP Switch Chart**

<b>SWITCH</b>	<b>ON</b>	<b>OFF</b>
Switch #1	Enable Coins	Disable Coins
Switch #2	Select 8 Coin	Select 4 Coin
Switch #3	Enable Coin 7 & 8	Disable Coin 7 & 8
Switch #4	Enable Coin 5 & 6	Disable Coin 5 & 6
Switch #5	Enable Coin 4 (A4)	Disable Coin 4 (A4)
Switch #6	Enable Coin 3 (A3)	Disable Coin 3 (A3)
Switch #7	Enable Coin 2 (A2)	Disable Coin 2 (A2)
Switch #8	Enable Coin 1 (A1)	Disable Coin 1 (A1)

**DIP Switch Settings**

IV. Finland

Switch #1= On  
 Switch #2= Off  
 Switch #3= Off  
 Switch #4= Off  
 Switch #5= Off  
 Switch #6= On, 5 MKA  
 Switch #7= Off  
 Switch #8= On, 1 MKA

V. Sweden

Switch #1= On  
 Switch #2= Off  
 Switch #3= Off  
 Switch #4= Off  
 Switch #5= Off  
 Switch #6= Off  
 Switch #7= Off  
 Switch #8= On, 5 Krona