

CANADIAN BILL ACCEPTOR
CBA-35-SH

MODEL CBA-35-SH-A 30-B044

Chapter 6

Parts List

Class 623A-11-16
Date 95.04



JAPAN CASH MACHINE CO., LTD.

PARTS LIST

MODEL CBA-35-SH-A030-B044

Prepared: Apr. 13, 1995

Contents

1. General

PARTS DIAGRAM	P898-A-01
PARTS LIST	P898-B-01

2. Validator main body

PARTS DIAGRAM	P898-A-02
PARTS LIST	P898-B-02

3. External frame ass'y

PARTS DIAGRAM	P898-A-03
PARTS LIST	P898-B-03

4. Conveying ass'y

PARTS DIAGRAM	P898-A-04
PARTS LIST	P898-B-04

5. Push mechanism ass'y

PARTS DIAGRAM	P898-A-05
PARTS LIST	P898-B-05

6. Bill box

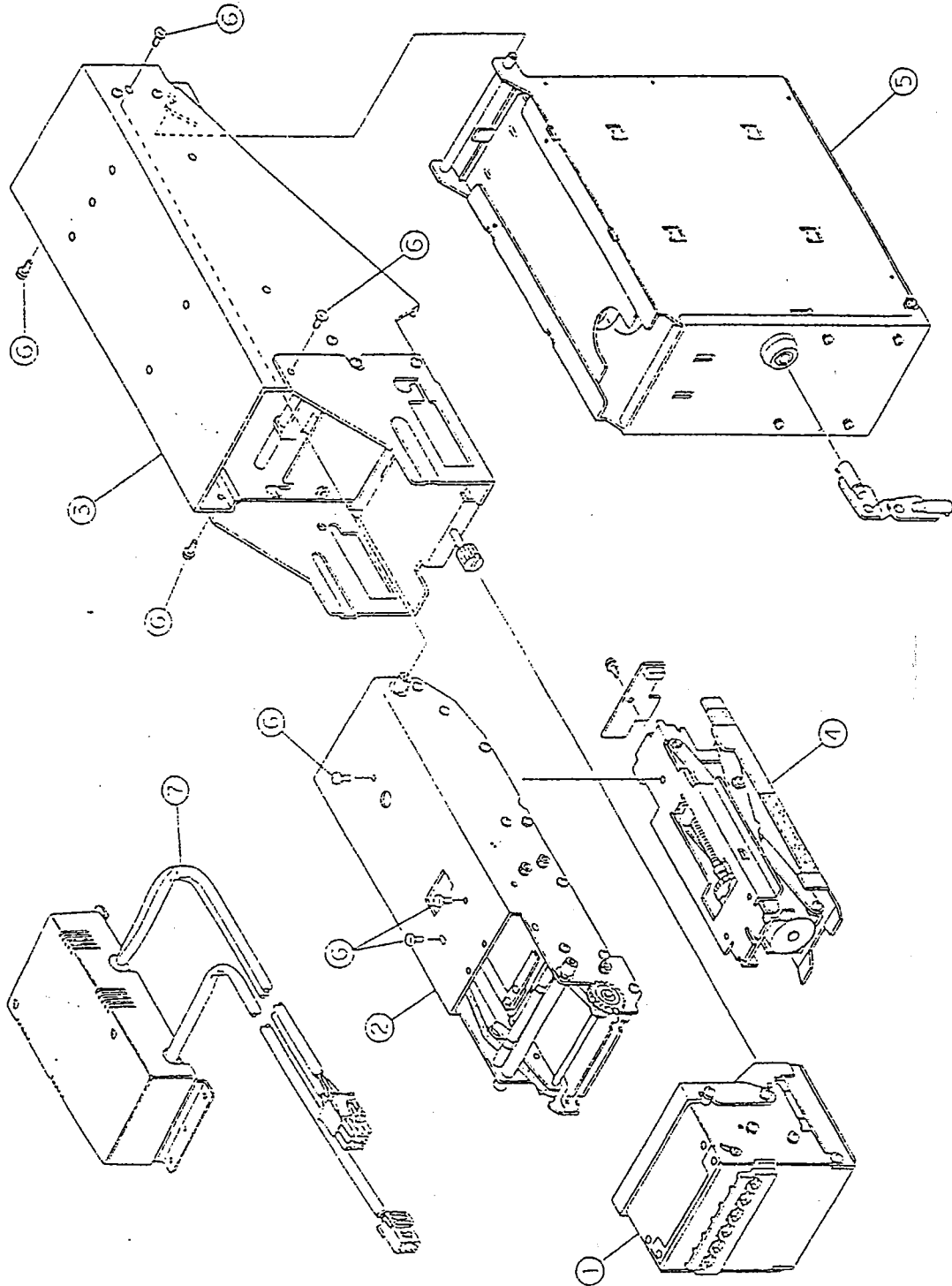
PARTS DIAGRAM	P898-A-06
PARTS LIST	P898-B-06

7. Power supply unit

PARTS DIAGRAM	P898-A-07
PARTS LIST	P898-B-07

PARTS DIAGRAM

Model	CBA-35-Sh-A030-B044	Classification	General	Draw 1/1
Date	1995.04.12	Amendment		P898-A-01

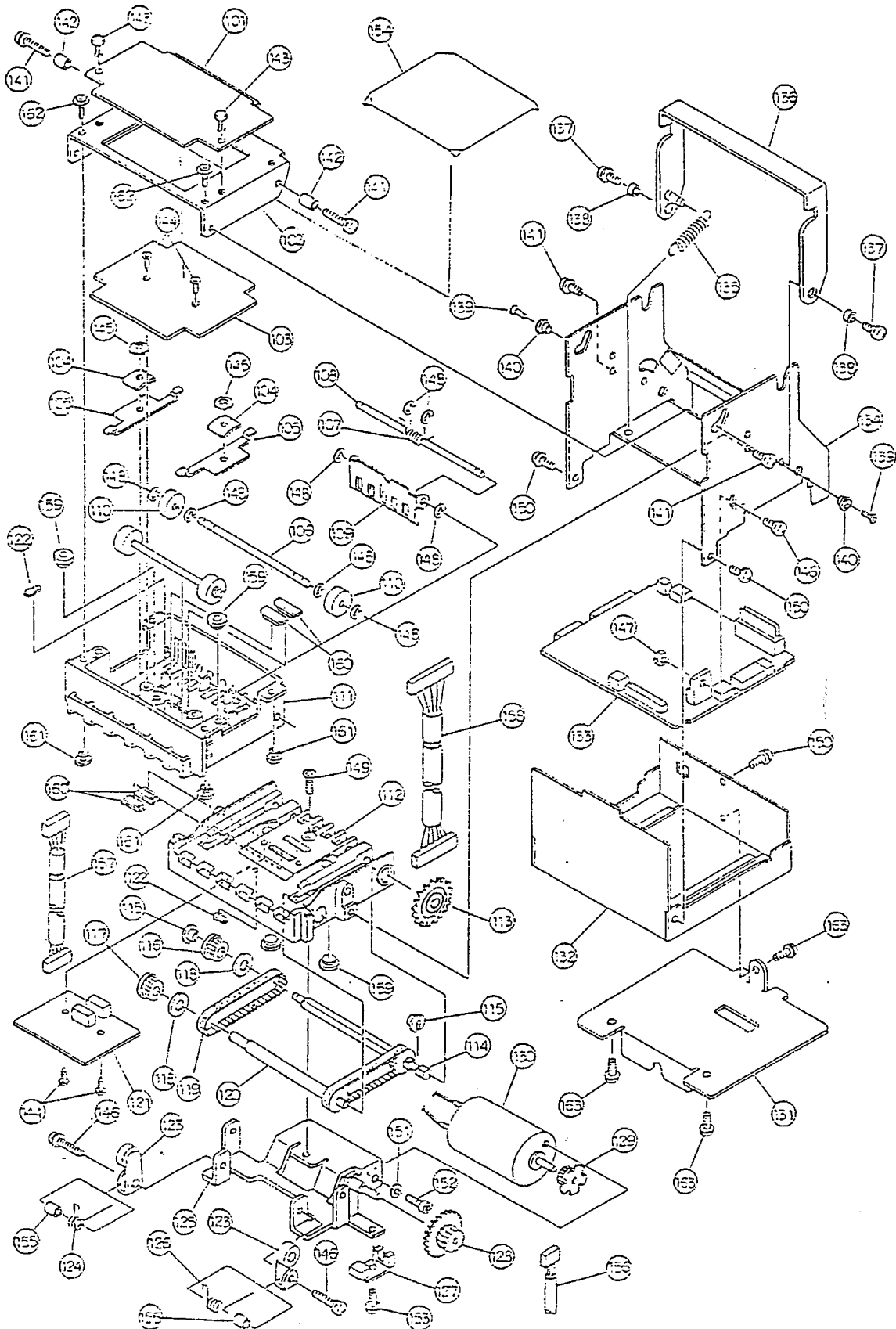


P A R T S L I S T

[illegible]

PARTS DIAGRAM

Model	CBA-35-SH-A030-B044	Classification	Validator main body	Draw 1/1
Date	1995.04.12	Amendment		P898-A-02



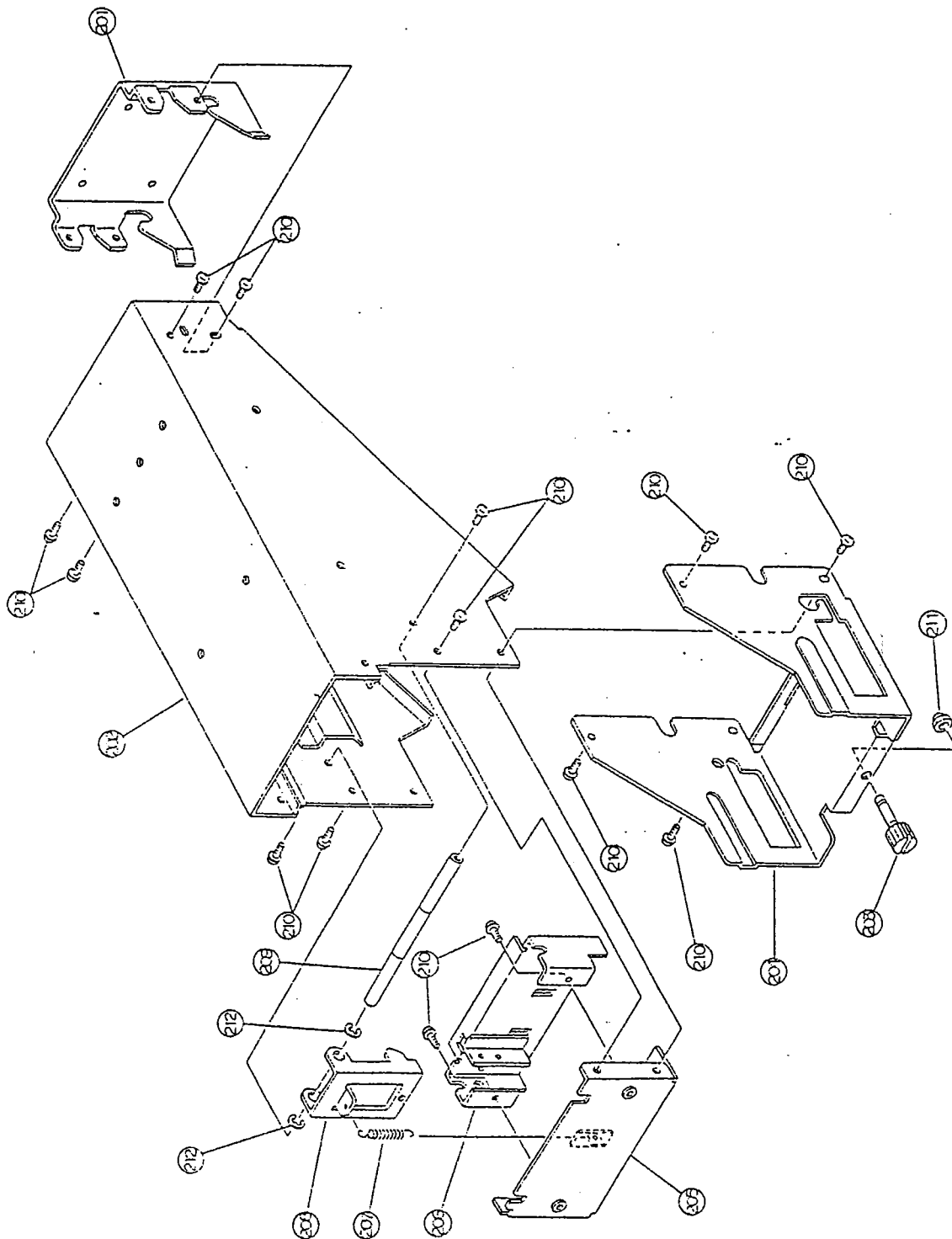
PARTS LIST					
Model	CBA-35-SH-A030-B044	Classification	Validator main body	Draw 1/2	
Date	1995.04.12	Amendment		P898-B-02	
No.	EDP No.	Parts No.	Description	Unit Pcs.	UNIT and Remarks
101	040394	P1-7AJ05	Upper lid cover	1	
102	040393	P1-7AJ04	Validator upper lid	1	
103	044132		Sensor/sub-board unit	1	
104	038970	P1-7V12	Plate	2	
105	040398	P1-7AJ09	Roller leaf spring	2	
106	040277	SH3-7AJ01	Roller rod	2	
107	040303	KS-7AJ01	Shutter spring	1	
108	040278	SH3-7AJ02	Shutter lever rod	1	
109	040397	P1-7AJ08	Shutter lever	1	
110	026108	RE-7V10	Roller	4	
111	040345	RE-7AJ01	Guide (upper)	1	
112	040344	RE-7AJ02	Guide (lower)	1	
113	026105	RE-7V07	Gear (1)	1	
114	040282	SH-5-7AJ01	Drive shaft	1	
115	026109	RE-7V11	Bearings	2	
116	026103	RE-7V05	Drive pulley	2	
117	026104	RE-7V06	Driven pulley	2	
118	026091	P1-7V09	Washer	4	
119	040988	55MXL4	Timing belt	2	
120	040283	SH5-7AJ02	Driven pulley shaft	1	
121	040299	K1911-JC	LED substrate	1	
122	040341	RE-7AJ05	Sensor bush (Milk-white)	2	
123	041428	ASP1-7AJ10VA	Tension lever (V)	2	
124	040304	KS-7AJ02	Tension spring (right)	1	
125	040396	ASP1-7AJ07A	Motor bracket	1	
126	040305	KS-7AJ03	Tension spring (left)	1	
127	040300	K1921-JC	Encoder sensor substrate	1	
128	026106	RE-7V08	Gear (2)	1	
129	026107	RE-7V09	Encoder gear	1	
130	040361		Motor assy.	1	
131	046049	898PT203	Validator base CBA	1	
132	040391	P1-7AJ02B	Substrate mounting base	1	
133	040358		CPU substrate	1	
134	040390	P1-7AJ01	Validator frame	1	
135	040307	No. 2129	Spring	1	
136	040395	ASP1-7AJ06	Upper lid lock assy.	1	
137	003609		M3×6 Screw with washer	2	
138	001632		φ3×2.5 Wound bush	2	
139	040465		M2×6 Flat head countersunk screw	2	
140	041607	C06-7AJ01	Hinge	2	
141	006037		M3×12 Screw with washer	4	
142	041606	C05-7AJ01	Bush	2	
143	000217	P3055	Bush rivet	2	
144	026071		M2.6×8 Tapping screw	4	
145	026073	CSTW-3	φ3 CS stop ring	2	

[illegible]

P898-B-02

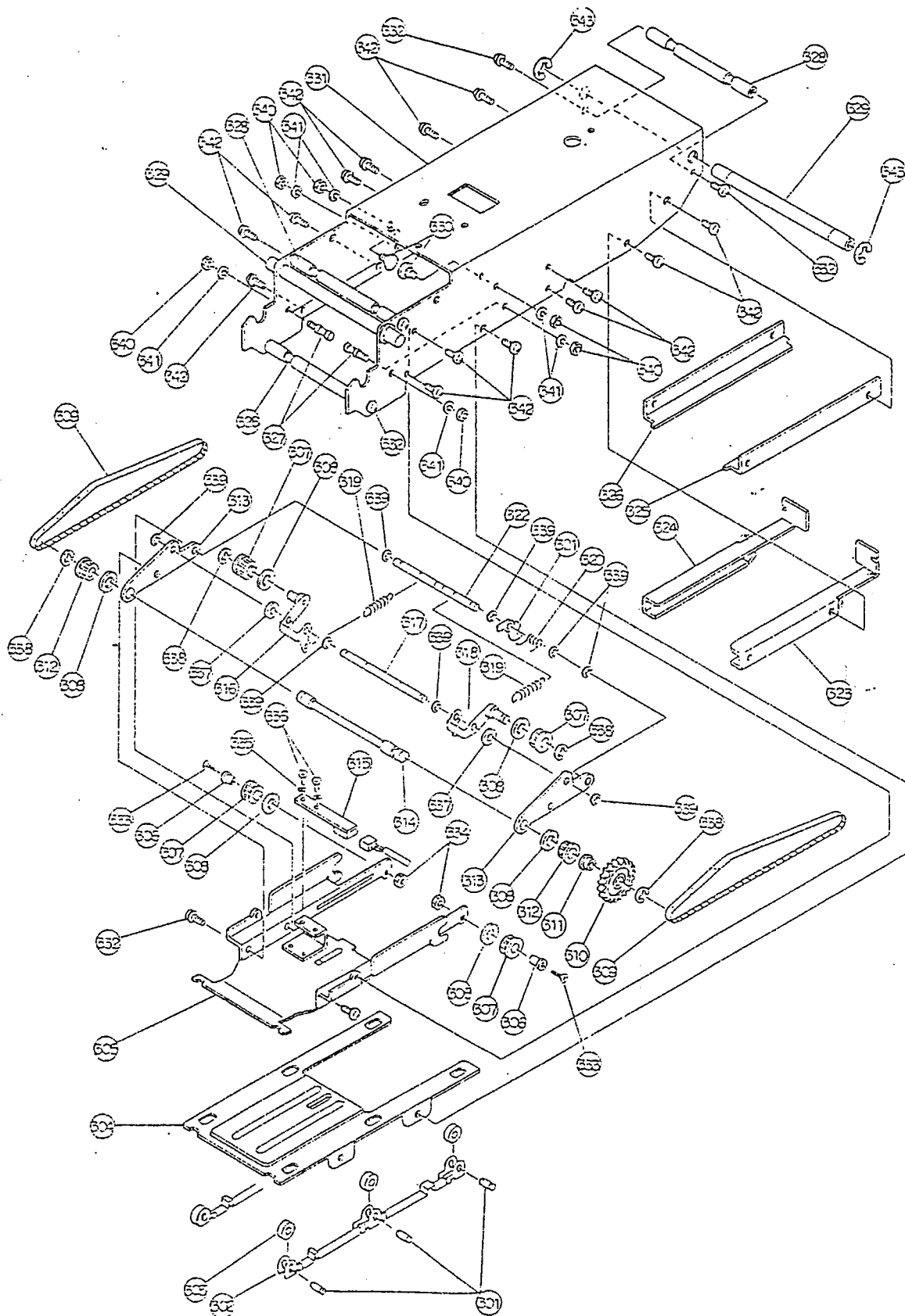
PARTS DIAGRAM

Model	CBA-35-SH-A030-B044	Classification	External frame assy.	Draw 1/1
Date	1 9 9 5 . 0 4 . 1 2	Amendment		P898-A-03



PARTS DIAGRAM

Model:	ICBA-35-SH-A030-3044	Classification:	Conveying assy.	Draw 1/1
Date:	1995. 04. 12	Amendment:		P896-5-04



PARTS LIST

Model		CBA-35-SH-A030-B044		Classification		Conveying assy.		Draw 1/1	
Date		1 9 9 5 . 0 4 . 1 2		Amendment				P898-B-04	
No.	EDP No.	Parts No.	Description	Unit Pcs.		UNIT and Remarks			
301	026545	BE3-7T03	Roller shaft	6					
302	045790	P1-7T64	Conveyor leaf spring B	2					
303	026541	RE-7T02	Stacker conveyor roller	6					
304	046051	898PT205	Guide B (W) CBA	1					
305	046050	898PT204	Guide A (W) joint CBA	1					
306	045795	CO6-7T51	Pulley collar	4					
307	026104	RE-7V06	Driven pulley	6					
308	026091	P1-7V09	Washer (1)	8					
309	040987	135MXL4V	Timing belt	2					
310	026105	RE-7V07	Gear (1)	1					
311	026109	RE-7V11	Bearings	3					
312	026103	RE-7V05	Driven pulley	2					
313	045785	P1-7T55	Belt plate	2					
314	046057	898SH201	Stacker shaft (W) CBA	1					
315	040302	K1920-JC	Photo interrupter substrate (2)	1					
316	045825	ASP1-7T56	Tension lever left assy.	1					
317	046058	898SH202	Tension lever rod	1					
318	045826	ASP1-7T57	Tension lever right assy.	1					
319	039365	No. 2061	Spring	2					
320	039289	KS-7V05	Lever spring (V)	1					
321	038994	P1-7V13	Lever (V)	1					
322	046059	898SH203	SH lever rod (W) CBA	1					
323	045784	P1-7T54	Guide D (W) right	1					
324	045783	P1-7T53	Guide D (W) left	1					
325	026556	P1-7T04A	Guide C (1)	1					
326	026557	P1-7T05A	Guide C (2)	1					
327	045793	ST4-7T51	Stud	4					
328	046055	898BE201	Beam (W) CBA	3					
329	046056	898BE202	Conveyor fixing beam (CBA)	2					
330	045794	ST8-7T51	Guide fixing stud	2					
331	046052	898PT206	Conveyor frame (W) CBA	1					
332	003601		M3×6 Screw	8					
333	045829		M2×10 Flat head countersunk screw	4					
334	022488		M2 Nut, grade 1	4					
335	006478		M2.6×5×0.5 Flat washer	2					
336	003598		M2.6×6 Screw	2					
337	006026		M3×6×0.5 Flat washer	2					
338	003707		φ3 E-ring	4					
339	003705		φ2 E-ring	8					
340	003669		M3 Nut, grade 1	6					
341	014827		φ3 Spring washer	6					
342	006031		M5×4 Screw	14					
343	003705		φ4 E-ring	4					

PARTS DIAGRAM

Model CBA-35-SH-AC30-3044

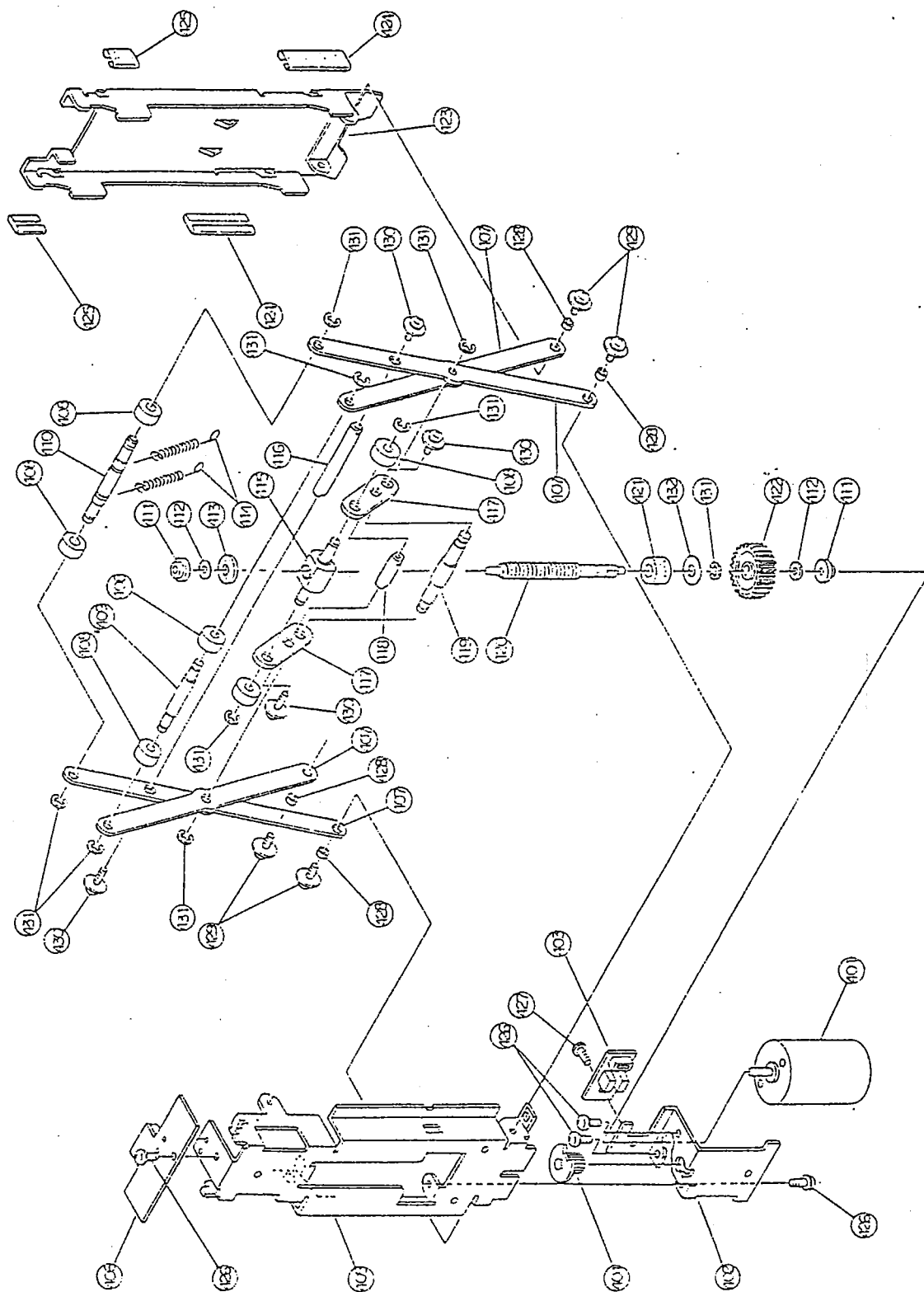
Classification	Push mechanism assy.
----------------	----------------------

Draw 1/1

Date	1995. 04. 12
------	--------------

Amendment

PG 98-B-05

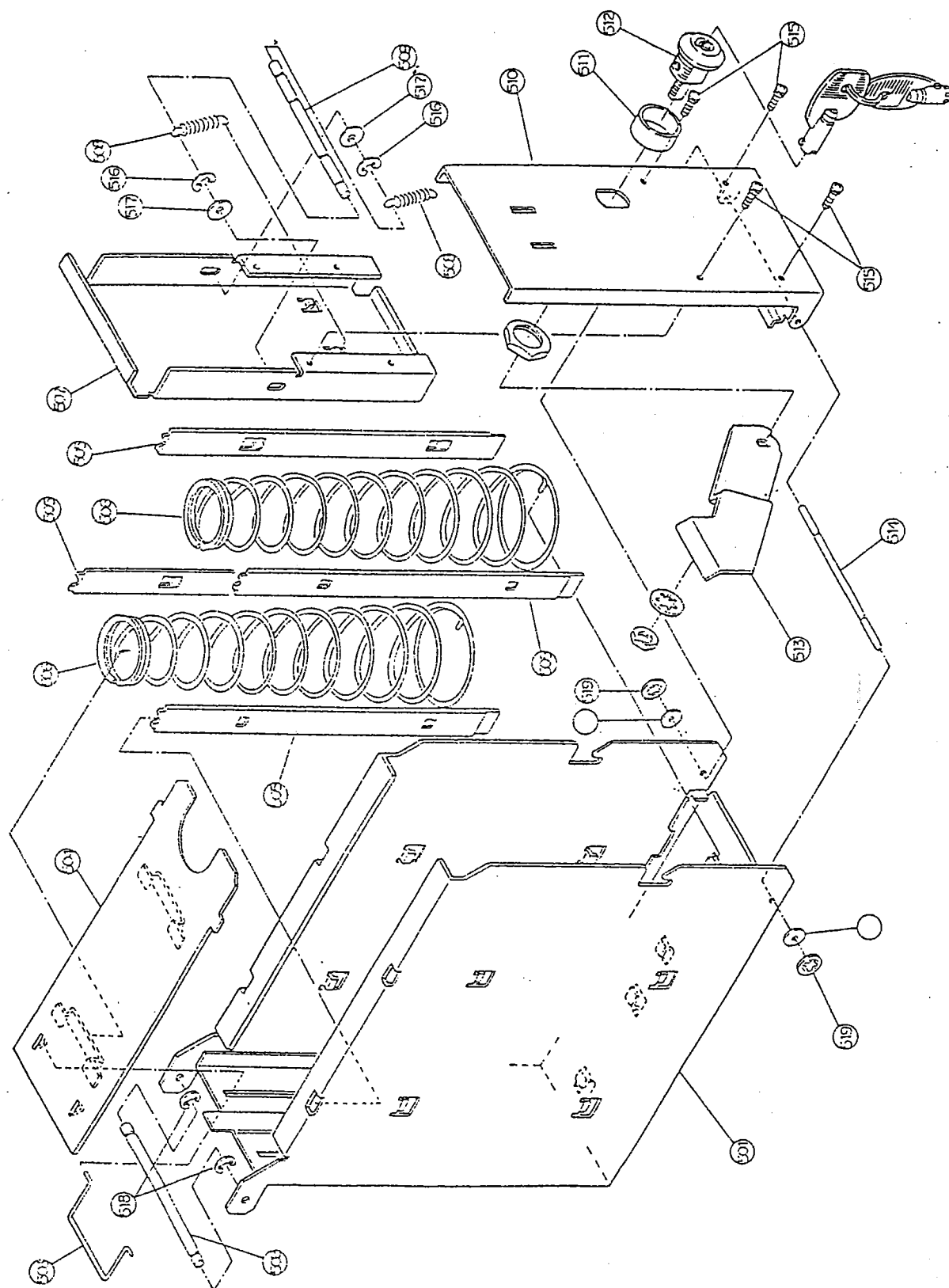


[illegible]

Parts No. 817-441-06-06-01

PARTS DIAGRAM

Model:	CBA-3E-SH-A030-5044	Classification:	5111 box	Draw 1/1
Date:	1995. 04. 12	Amendment:		PS9E-5-06

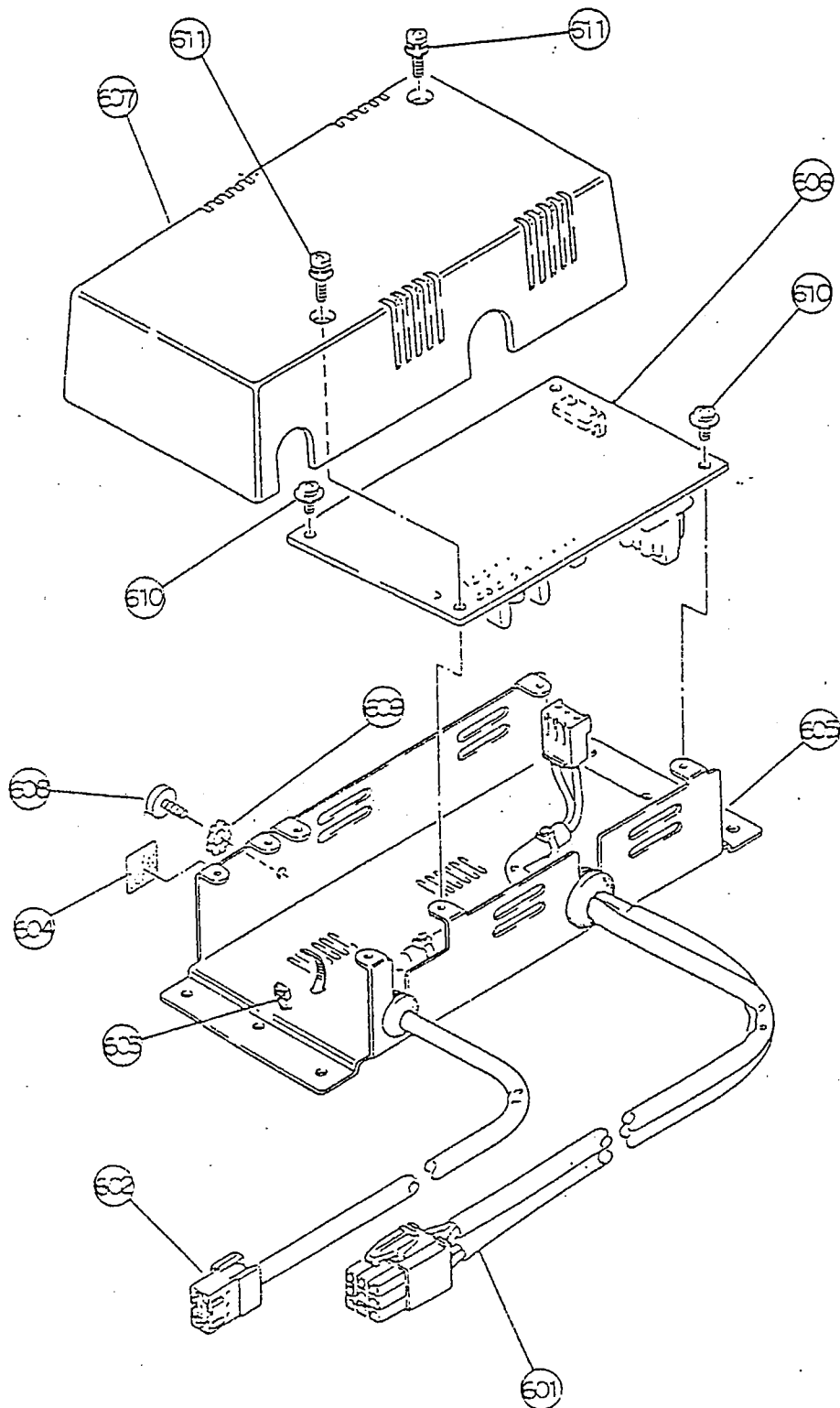


[illegible]

P898-B-05

PARTS DIAGRAM

Model:	CBA-35-SH-AC30-BC44	Classification:	Power supply unit:	Draw 1/1
Date:	1995. 04. 12	Amendment:		P898-5-07



PARTS LIST

[illegible]