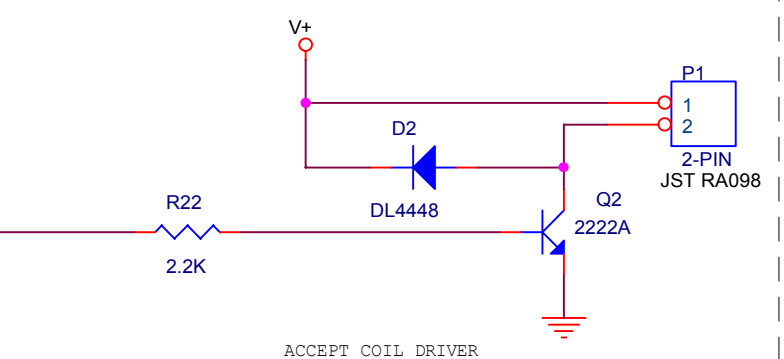
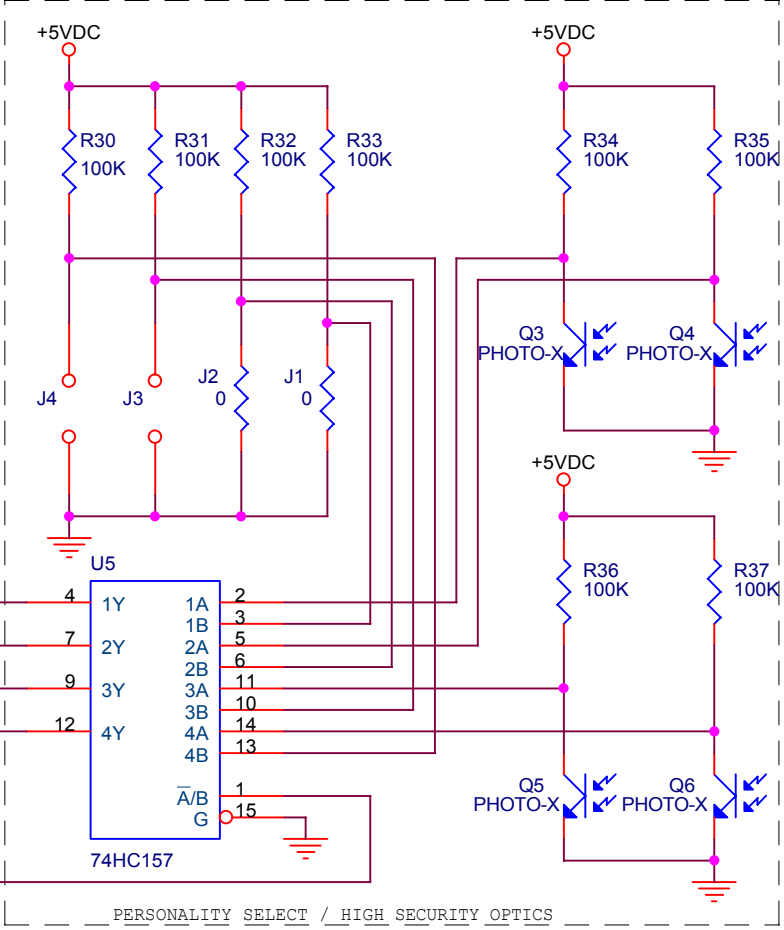



NO.	ECO #	REVISIONS	DATE BY
0	005665	NEW RELEASE	5/12/99 BPP
CHANGE TITLE FROM CC46 TO MC40 PROJECT #99002			3/2/00 BPP
01	006456	ADD U2 SOCKET, NEW PROG, NEW PCB LABEL	06/12/01 SJS



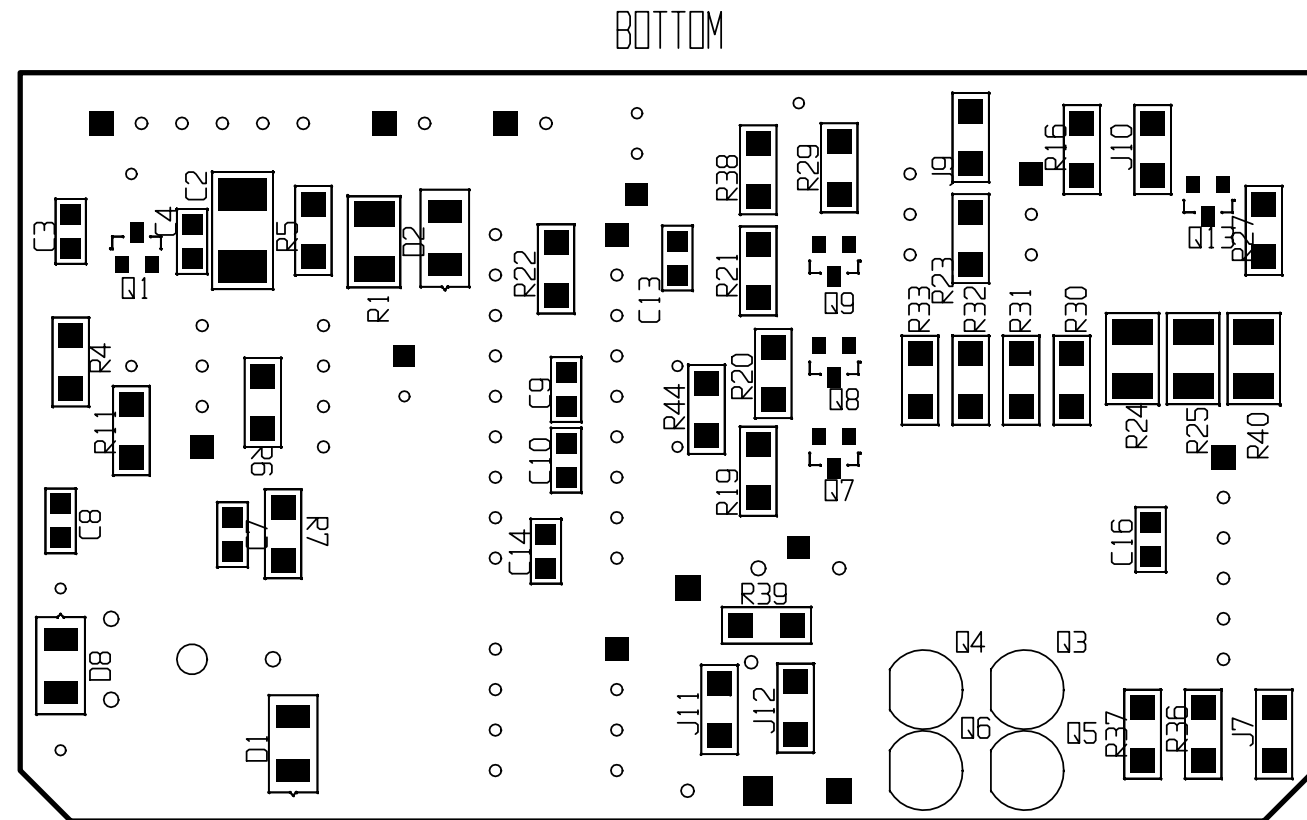


COIN MECHANISMS INC.
400 REGENCY DRIVE
GLENDALE HEIGHTS, IL 60139


TITLE PCB,CTRL,MC40,24VAC/DC C25MS,T13S,PR3,6PIN,CDS	
DRAWN BPP	DATE 5/12/99
APP	DATE
DWG # 09270333	REV 1
SIZE B	SHT 1 OF 3

GRAY
VIOLET
RED
YELLOW
OPEN
BLACK

NOTE:
IF Y1 IS M-TRON (ATS-49-12.00) -> C9 & C10 MUST BE 27pF



1. REFER TO SCHEMATIC DIAGRAM AND PARTS LIST FOR REFERENCE DESIGNATIONS AND COMPONENT VALUES
2. MAXIMUM HEIGHT FOR ANY COMPONENT TO BE .450" EXCEPT FOR LED AND C11.
3. MAXIMUM COMPONENT LEAD PROJECTION TO BE .085".
4. SOLDERING SHALL BE IN ACCORDANCE WITH IPC-S-815.
5. ASSEMBLIES TO BE CLEANED OF FLUX AND OTHER CONTAMINANTS AFTER SOLDERING.
6. LEDS TO BE VERTICAL TO PCB DURING SOLDERING PROCESS (SEE DETAIL A).
7. CONNECTORS TO BE FLUSH TO PCB DURING SOLDERING PROCESS.
8. Q3-Q6 MUST FLUSH AND PERPENDICULAR TO BOARD.
9. C11 MUST BE FLUSH AND PERPENDICULAR TO BOARD WITH A MAXIMUM HEIGHT OF .472" FROM SURFACE OF BOARD.

 <p>COIN MECHANISMS INC. 400 REGENCY DR. GLENDALE HGTS, IL</p>	TITLE		PCB, CTRL, MC40, 24VAC/DC, C25MS T13S, PR3, 6 PIN, CDS	
	DRAWN	BPP	DATE	5/12/99
	CHKD		DATE	
	APP		DATE	
<p>This drawing is the property of and contains proprietary information of Coin Mechanisms, Inc. The drawing shall be returned upon request and is not to be copied or disclosed without written authorization and will not be used in any way detrimental to the interest of Coin Mechanisms, Inc.</p>	DWG NO. 09270333			REV 1
	SIZE B SCALE X=X		g:\elec\dwg-re\0927-9.2 SHT 2 OF 3	