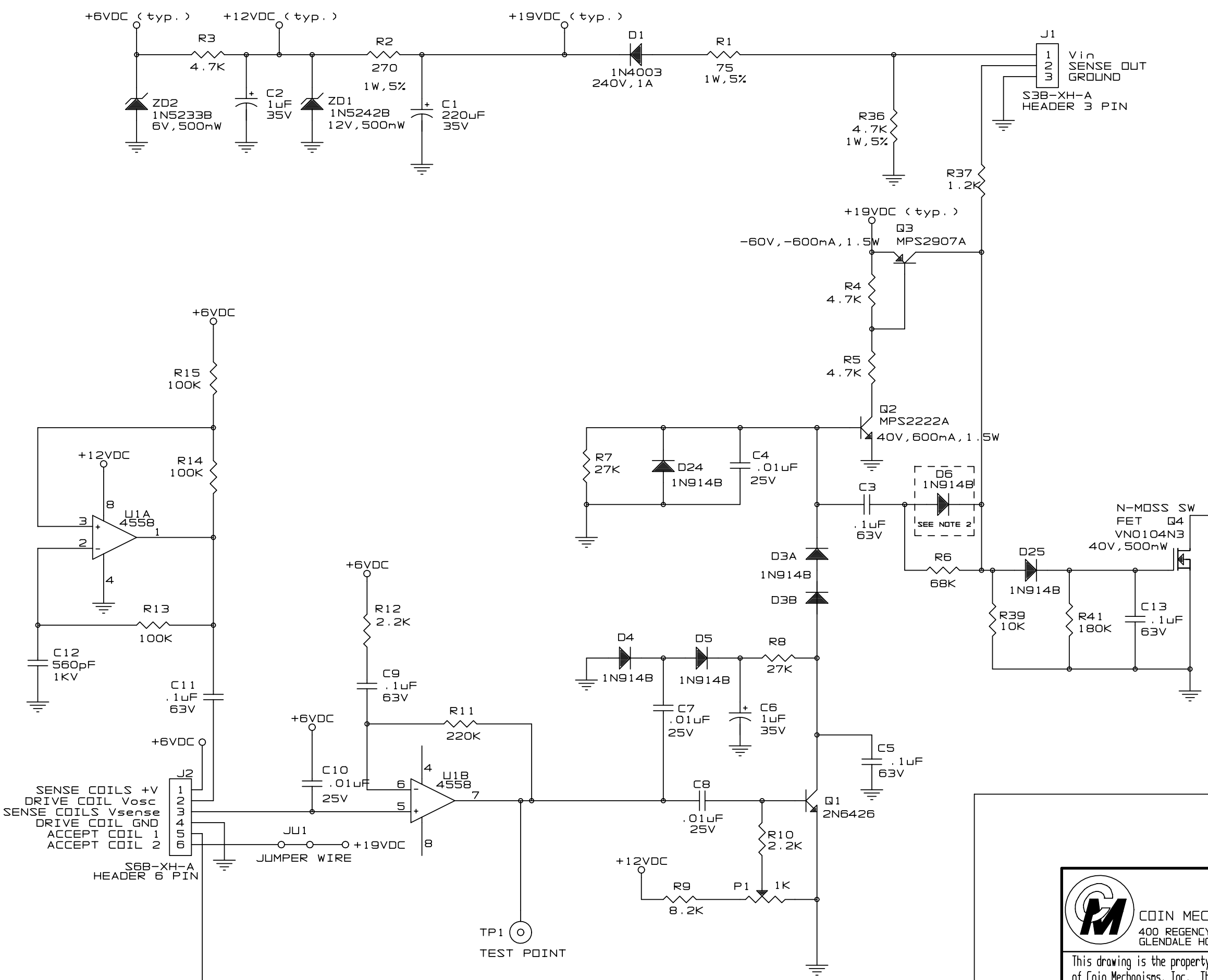



NO.	ECO NO.	REVISIONS	DATE/BY
00	P#916	RELEASE TO REPLACE 09270024 LOW SECURITY USED IN CC-37 WITH GAIN 1	5/29/97 SS
01	005463	R36 CHANGED FROM 1K TO 4.7K	11/4/98 BPP
02	006150	ADDED D3B, CHANGE R9 FROM 16K TO 8.2K, CHANGE Q1 FROM 2222 TO 2N6426, CHANGE U1 FROM 1458 TO 4558.	6/19/00 BPP
		REMOVE ZD4 DIODE FROM ACROSS POT- P1. THIS CHANGE WAS IMPLEMENTED ON REV2 BUT THE "REVISIONS" HISTORY BOX DID NOT INDICATE THIS CHANGE.	3/9/01 BPP



- NOTES:
- 1) U1 IS 4558
  - 2) UNMARKED CAPACITORS ARE RATED AS FOLLOWS:  
 .01uF - 25V  
 .1 uF - 35V  
 .68uF - 35V  
 1 uF - 35V
  - 3) ALL UNMARKED RESISTORS ARE 1/4W 5%
  - 4) FOR COINS SMALLER THAN 1.500" IN DIA. INSTALL D6

 <p>COIN MECHANISMS INC. 400 REGENCY DR. GLENDALE HGTS, IL</p>	TITLE PCB, CTRL, CC37, 24VAC, S12MS, NOI, LC, GAIN1				
	DRAWN	KDH	DATE	5/16/95	
	CHKD		DATE		
	APP		DATE		
	DWG NO. 09270250			REV 2	
This drawing is the property of and contains proprietary information of Coin Mechanisms, Inc. The drawing shall be returned upon request and is not to be copied or disclosed without written authorization and will not be used in any way detrimental to the interest of Coin Mechanisms, Inc.		SIZEB	SCALE X=X	COMP NO. XXXXXXXX	SHT 1 OF 3

