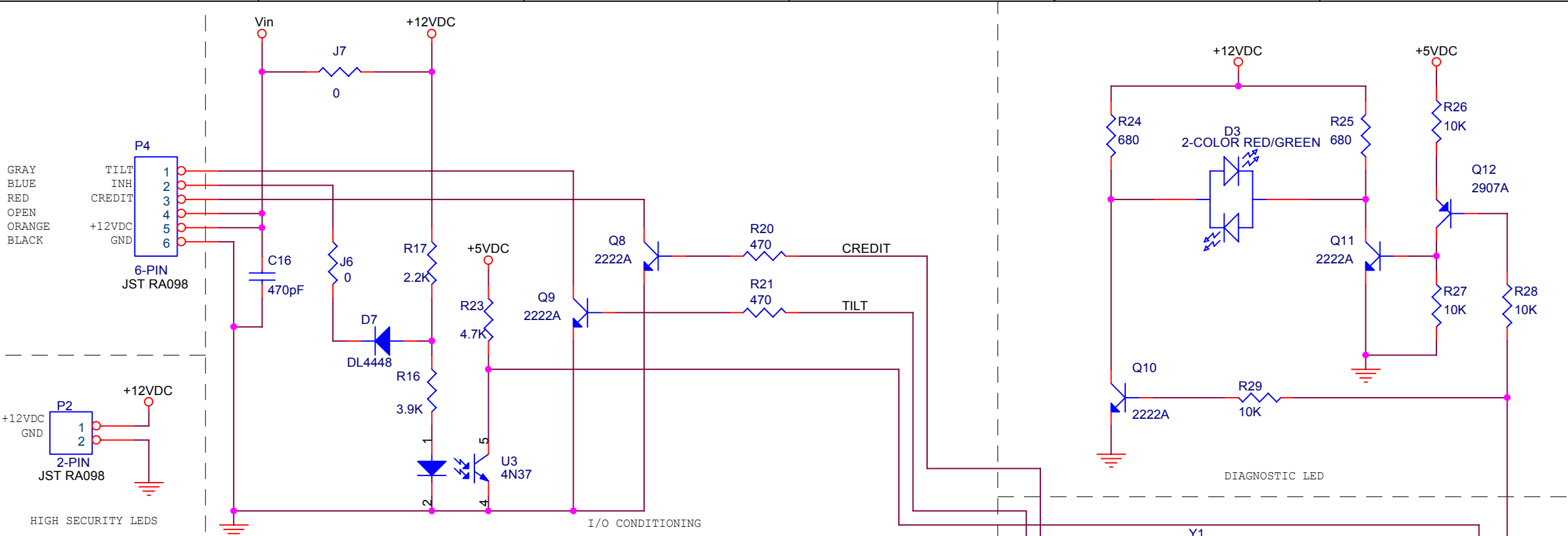
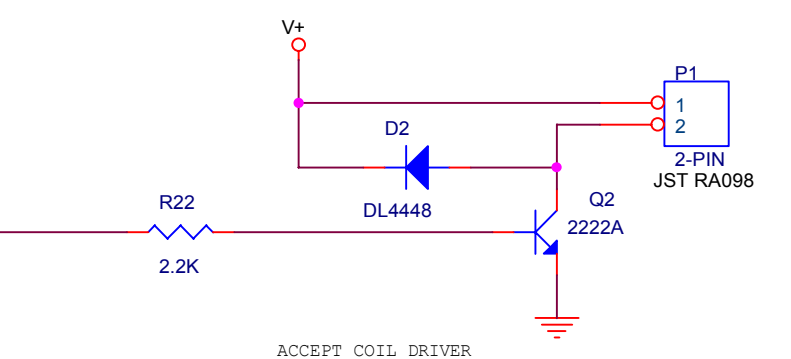
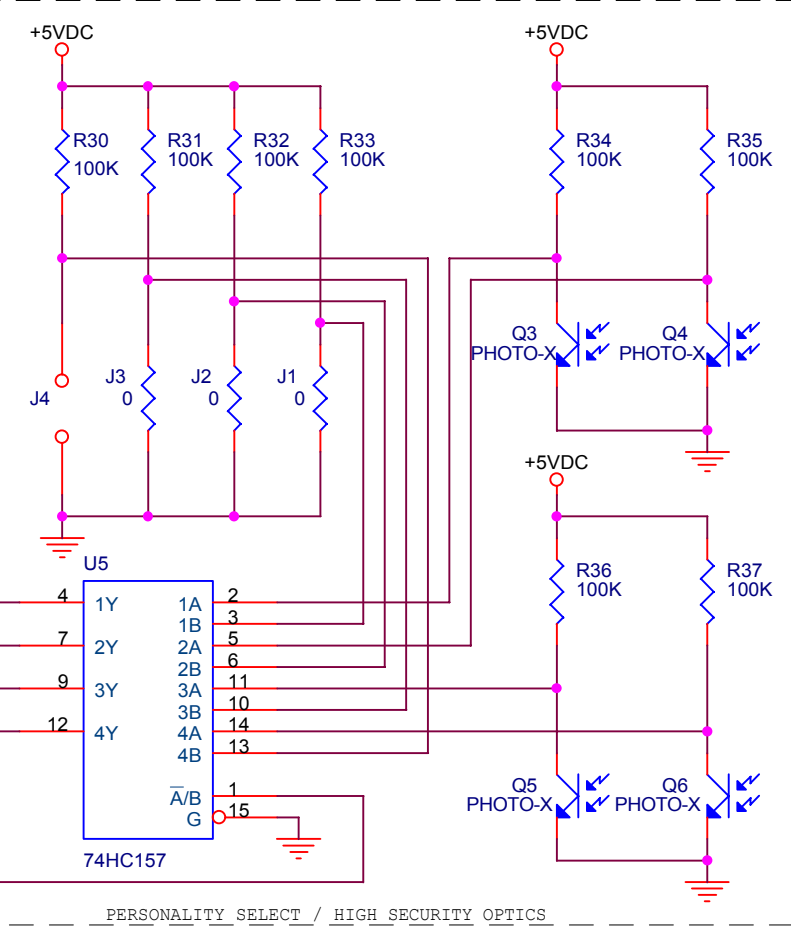
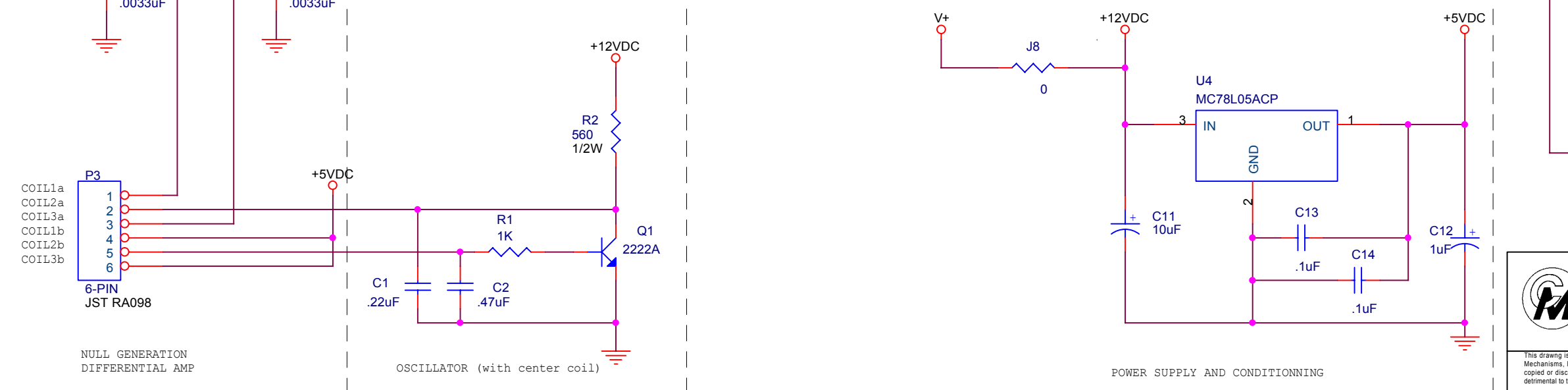
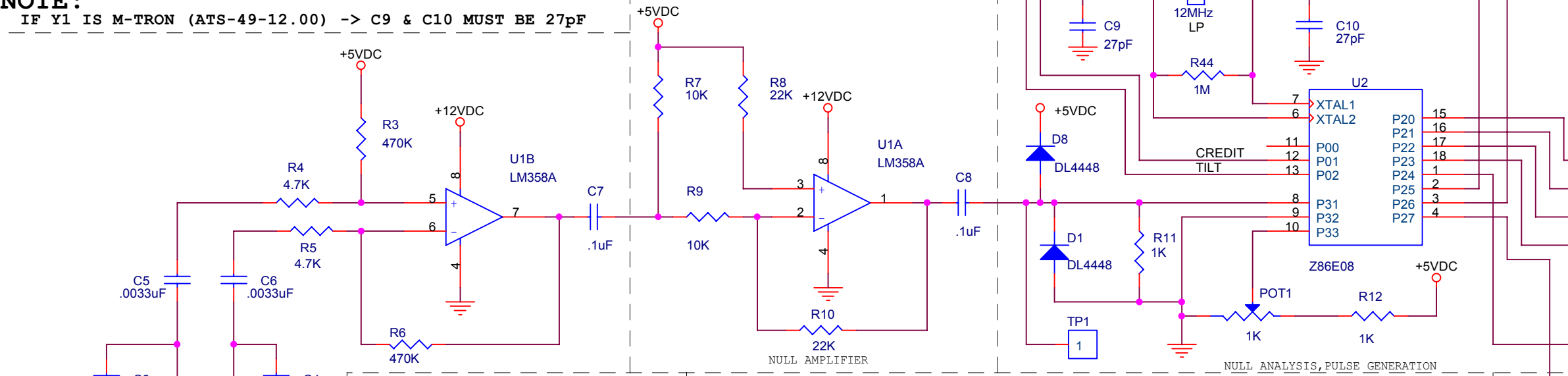



NO.	ECO #	REVISIONS	DATE BY
0	006717	NEW RELEASE	2/20/02 BPP



**NOTE:**  
IF Y1 IS M-TRON (ATS-49-12.00) -> C9 & C10 MUST BE 27pF





**COIN MECHANISMS INC.**

400 REGENCY DRIVE  
GLENDALE HEIGHTS, IL 60139

This drawing is the property of and contains proprietary information of Coin Mechanisms, Inc. The drawing shall be returned upon request and is not to be copied or disclosed without written authorization and will not be used in any way detrimental to the interest of Coin Mechanisms, Inc.

TITLE PCB,CTRL,MC40,12VDC,C48MS, T13MS,INH HI,PR7.6PIN,NICKEL	
DRAWN BPP	DATE 2/20/02
APP	DATE
DWG # 0927-000539	REV 0
SIZE B	SHT 1 OF 3

