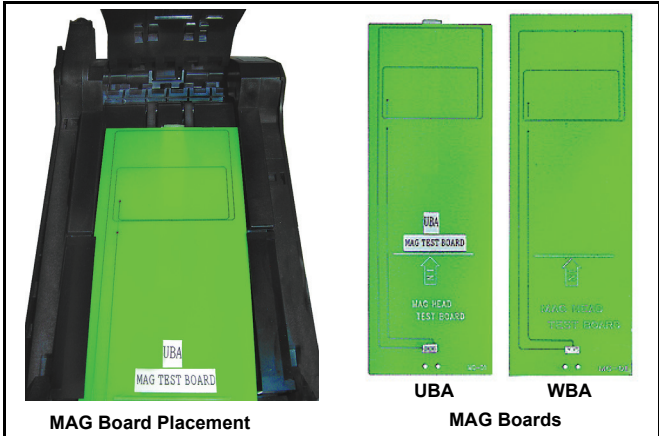


www.jcm-american.com

The JCM web site provides the tools required, including the software information database containing DIP Switch information, our Photo Parts Catalog, online ordering form, service materials, and much more.

Parts are Parts



Part No. 300-100313R

Description: UBA MAG Test PCB, P/N: 4033-MC-01

Usage: Used to calibrate the UBA Magnetic Sensor

Note: This MAG Test board is similar to the one used for the WBA. The main differences between boards are that the UBA Board is slightly shorter to allow access to the Magnetic Head which is situated farther back in the transport. There is also a plastic shim on the back side of the board to hold it in the correct proximity to the MAG Head. Procedures for calibrating the UBA are located in the UBA Service Manual at the JCM website (<http://www.jcm-american.com/docs/manuals/960-000097.pdf>). Be sure to center the Mag Test Board when performing calibration to insure a proper calibration result.

Latest JCM Software Listing

UNIT	ID	Version*	CRC or Check Sum
UBA-10/11-SS	ID-003	V1.71-16	AD3C
UBA-10/11-SS	ID-024	V1.77-17	CRC= 719A
UBA-14-SS & UBA-24-SS/SU	ID-024	V1.76-24	CRC= 421D
UBA-14-SS & UBA-24-SS/SU	ID-028	V1.76-13	CRC= 650A
WBA-12/13-SS	ID-003	V-3.75-32i*	C9AB
WBA-12/13-SS	ID-0C3	V-3.75-09i*	64F4
WBA-12/13-SS	ID-022/023	V-3.63-03i*	1068
WBA-12/13-SS	ID-044C	V-3.75-05i*	FE10
WBA-12/13-SS	ID-044	V-3.75-05i*	D716
WBA-12/13-SS	ID-024	V-3.75-34	CD3B
DBV-200-B0/B1	ID-022/023	V-2.61-04-03	79E0
DBV-200-A2/A3	ID-044P/045P	V-2.70-05	AA03
DBV-200-A2/A3	ID-044WP/045WP	V-2.61-05	19F7
DBV-200-B4/B5	ID-024	V-2.70-11	6C31
DBV-200-B4/B5	ID-003	V-2.61-02	9E55

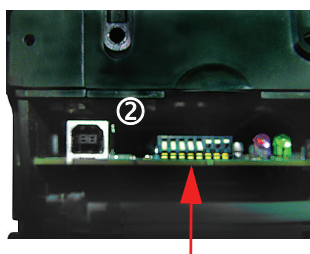
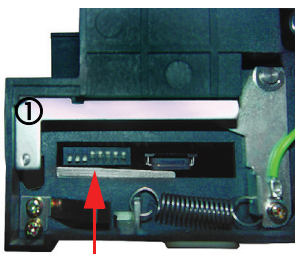
* an "i" suffix indicates Intelligent Cash Box option.

The list of JCM bill validator software provided herein notifies customers of the latest versions developed. However, the listing does not identify versions approved by gaming jurisdictional authorities for actual use. Customers should consult JCM's Parts Sales departments concerning approved versions for jurisdictions of intended use.

Technical Notes

When a file is corrupted during a download, it may be necessary to enter Forced Download Mode. The below photos illustrate the proper Dip Switch settings for Forced Download Mode on a WBA or UBA Unit.

1. WBA DIP Switch Settings (3 Down - 4 Up).
2. UBA DIP Switch Settings (4 Down - 3 Up).



WBA

DIP Switches

UBA

Save Time and Labor with JCM's Intelligent Cash Box System

The ICB® (Intelligent Cash Box) system is a unique cash management system that allows the operator to track a cash box and its contents through the entire cash process. The ICB system eliminates the need for dedicating cash boxes to specific machines, or putting barcode identification labels on the cash boxes. The cash boxes are tracked electronically eliminating most variance issues, and with the custom reports provided to each department, accuracy and efficiency is greatly improved.





FREE REGIONAL USA TRAINING

Give your technicians the tools they need to keep your customers happy and your equipment running at peak efficiency.

For the local and regional training schedule visit:

http://www.jcm-american.com/support/training_calendar.asp

Technical Bulletin 200805 May 2008

Technical Tips

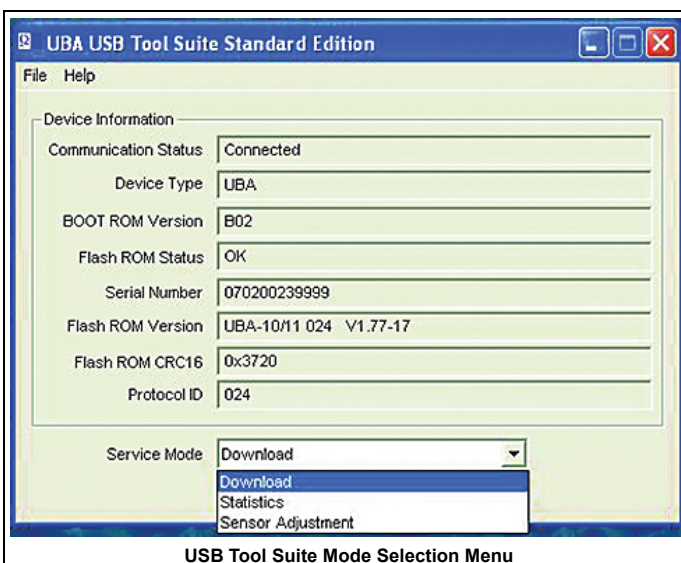
Question: Why are UBA downloads inhibited following a Next Gen \$5 software download?

Answer: Starting with the Next Gen \$5 software, a new feature was added to UBA software.

The new feature is called the “USB Tool Suite” and, in addition to being able to download through the UBA’s front USB Port, ACC Load files can also be obtained along with the possibility of calibration from the front USB port.

The USB Tool Suite is undergoing final testing and should be available very soon. The USB Tool Suite changes the way the UBA’s Front USB port is controlled. Because of these changes, once the Next Gen \$5 Software is downloaded, any subsequent downloads must be done in Forced Download Mode when using the standard Version 3.02 UBA Download program. In order to enter the Forced Download Mode on a UBA Unit:

1. Remove power from the UBA Unit.
2. Turn DIP Switches 6, 7 and 8 ON and re-apply power to the unit, then
3. Continue with the download program as usual.



JCM TECHNICAL SUPPORT CONTACTS

General Product Support:

Toll Free Product Support	(800) 683-7248	
Training	(800) 683-7248	training@jcm-american.com

Optipay Product Support (DBV-30X, RC-10, A-66)

Toll Free Product Support	(800) 683-7248	optipaysupport@jcm-american.com
Training	(800) 683-7248	training@jcm-american.com

After Hours Support

JCM prides itself in offering the best customer service in the industry. We prove this by offering a 24 hour hotline, where technical support personnel can be reached at any time, 7 days a week. To reach our 24/7 after hour's hotline, just follow these three easy steps:

1. Call JCM American at (800) 683-7248, then
2. Select option 5 and wait for the call to be transferred to the JCM after hour's Technical Support line.
3. Speak with a certified JCM support technician about your situation.

TOVIS TECHNICAL SUPPORT CONTACTS

Tovis Support Center

Product Support - Tovis Service Center	(702) 263-5560 (Mon - Fri, 9am - 5pm)	roy@tovism.com
Parts & Service	(702) 263-5560	roy@tovism.com

TRANSACT TECHNICAL SUPPORT CONTACTS

Product Support	(877) 748-4222 Option-3	techsupport@transact-tech.com
Parts	(877) 748-4222 Option-2	techsupport@transact-tech.com
Service	(877) 748-4222 Option-2	http://www.transact-tech.com/tsg/rma.html



JCM is a registered trademark of JCM American Corporation. All other product names mentioned herein may be registered trademarks or trademarks of their respective companies. Furthermore, TM and ® are not mentioned in each case in this publication.