


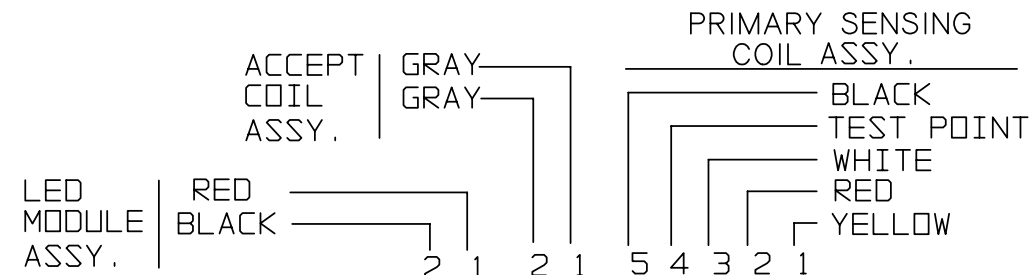
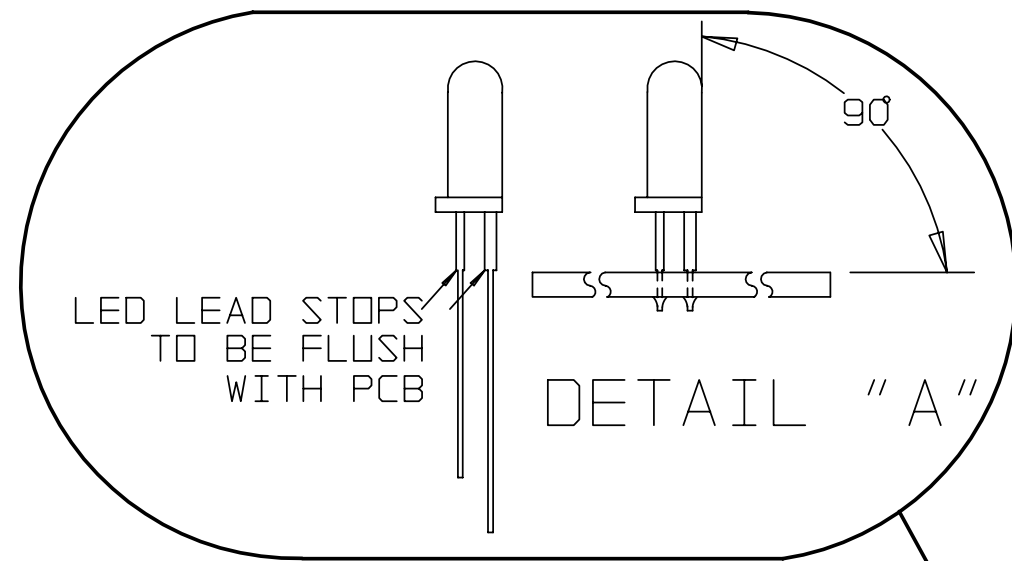
NO.	ECN NO.	REVISIONS	DATE/BY
00		NEW RELEASE	5-14-92/KDH
01	003168	SEE ECO 003168	2-22-93/KDH
	003296	CORRECT PARADOX BOM ERRORS FOR R10 & R13 CHANGE PCB DESCRIPTION TO... PCB,CTRL,CC-40,AC/DC,C25msT13s,NOI,SC,GAIN1 REMOVE LED3 P/N LL-2203R FROM SCHEMATIC.	8-22-94/SS
	004072	TEXT ERROR, CHANGE U3 TO U2 ON SHEET 2	10-25-95/SS
	004122	TEXT ERROR, CORRECTED COLOR ORDER OF J3 ON SHEET 2	2-8-96 LT
02	006150	ADDED D6B, CHANGE R14 FROM 20K TO 8.2K CHANGE Q1 FROM 2222 TO 2N6426, CHANGE U1 FROM 1458 TO 4558.	6/27/00 BPP

- NOTES :
- Unspecified capacitors are rated as follows:  
 .01uF - 25V  
 .1uF - 63V  
 .68uF - 35V  
 1uF - 35V  
 150pF - 500V
  - TILT PULSE WIDTH =  $R26 * C15$   
 CREDIT PULSE WIDTH =  $R29 * C17$
  - REMOVING D1,C1,ZD2,R5 AND  
 INSTALLING JUMPERS FOR D1 AND R5  
 MAKES THIS A 12VDC OPERATIONAL PCB.

 COIN MECHANISMS INC. 400 REGENCY DR. GLENDALE HGTS, IL		TITLE	
		PCB,CTRL,CC-40,AC/DC, C25MS,T13S,NOI,SC,GAIN1	
DRAWN	KDH	DATE	5/14/92
CHKD		DATE	
APP		DATE	
DWG NO. 09270128			REV 2
SIZE B	SCALE X=X	COMP NO. XXXXXXXX	SHT 1 OF 3

This drawing is the property of and contains proprietary information of Coin Mechanisms, Inc. The drawing shall be returned upon request and is not to be copied or disclosed without written authorization and will not be used in any way detrimental to the interest of Coin Mechanisms, Inc.

NO.	ECO NO.	REVISIONS	DATE/BY
02	6150	SEE SHEET 1	6/27/00 BPP

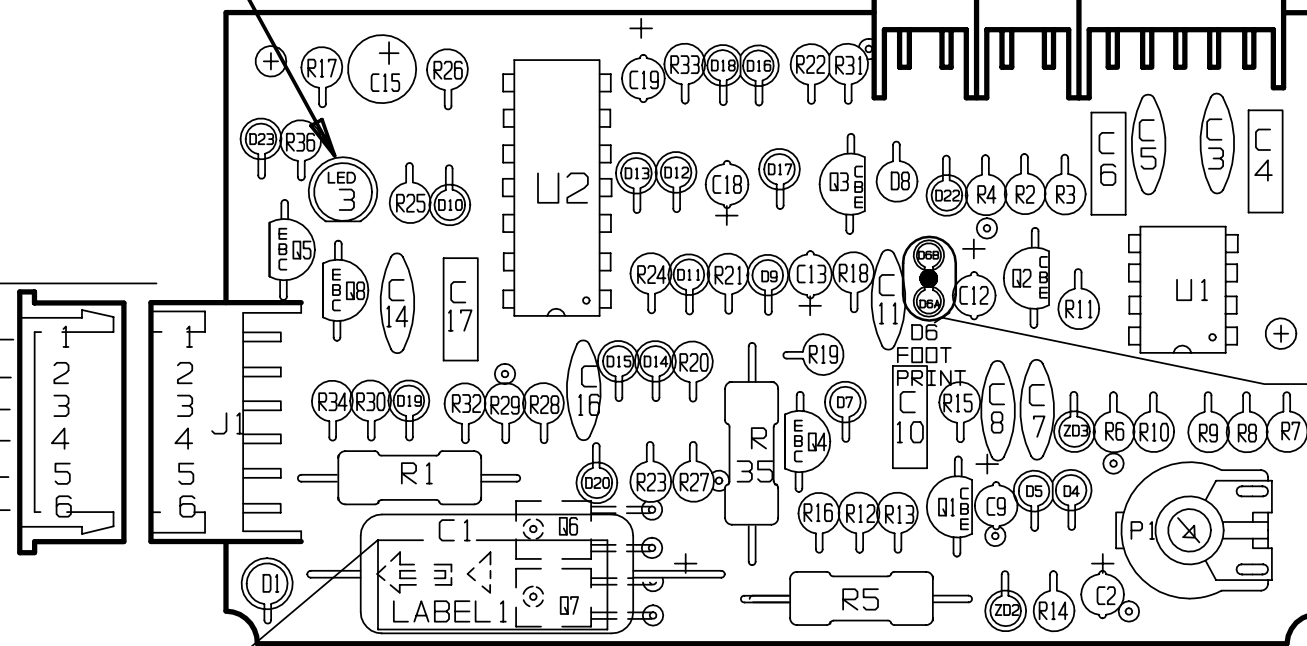


NOTES:

1. REFERENCE DESIGNATIONS REFER TO SCHEMATIC DIAGRAM, ALSO SEE PARTS LIST FOR COMPONENT VALUES.
2. MAXIMUM HEIGHT ON ANY COMPONENT TO BE .35 IN UNLESS SPECIFIED OTHERWISE.
3. MAXIMUM COMPONENT LEAD PROJECTION TO BE .085 IN.
4. SOLDERING SHALL BE IN ACCORDANCE WITH IPC-S-815
5. ASSEMBLIES TO BE CLEAN OF FLUX AND OTHER CONTAMINANTS AFTER SOLDERING.

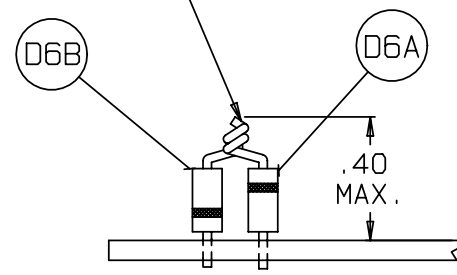
CUSTOMER INTERFACE  
POWER INPUT

TILT OUTPUT- GRAY  
+10ma DC SOURCE-VIOLET  
CREDIT OUTPUT- RED  
Vin AC/DC-YELLOW  
Vin AC/DC- ORANGE  
GROUND - BLACK



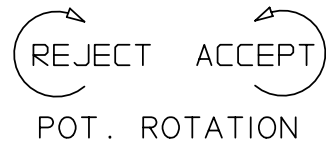
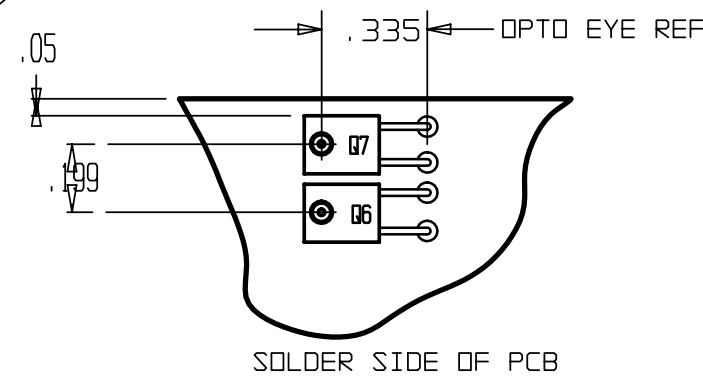
DETAIL B  
D6A/D6B

TWIST AND  
SOLDER LEADS




DETAIL B

PCB I.D.  
LABEL 1



P1 =SLUG REJECTION POTENTIOMETER

 <p>COIN MECHANISMS INC. 400 REGENCY DR. GLENDALE HGTS, IL</p>				<p>TITLE PCB, CTRL, CC-40, AC/DC, C25MS, T13S, NOI, SC, GAIN1</p>			
DRAWN	KDH	DATE	5/14/92	DWG NO.	09270128	REV	2
CHKD		DATE		COMP NO.	XXXXXXX	SHT	1 OF 3
APP		DATE		SIZE	B	SCALE	X=X

This drawing is the property of and contains proprietary information of Coin Mechanisms, Inc. The drawing shall be returned upon request and is not to be copied or disclosed without written authorization and will not be used in any way detrimental to the interest of Coin Mechanisms, Inc.