

PRELIMINARY

ProLINK™ Totalizer Version 1.01

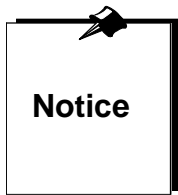
USER/REFERENCE MANUAL

23-00187-00

October, 1996



PRELIMINARY



CDS Manual Notice

This manual is provided as a guide for use only by a licensee of Casino Data Systems, a Nevada corporation. This manual is a general information document and is not site specific. It is not a technical specifications document and, while reasonable efforts have been made to ensure the accuracy of the information contained in this manual, Casino Data Systems disclaims all liability and assumes no responsibility for any errors or omissions that may be contained herein. As changes are made in the software, databases, and hardware used, this manual may be updated by Casino Data Systems. However, as design changes are made, the general accuracy of the document may be lost or parts of the document may not be accurate or relevant until a later revision is made.

The information contained in this manual is proprietary, confidential, and protected by copyright and a software license. No part of this manual or any related documentation may be reproduced or transmitted by anyone, in any form, or by any means, except in accordance with the licensee's existing license, and any violation of these prohibitions may result in revocation or other limitation of the license.

This edition applies to ProLINK Totalizer, Version 1.01. Make sure you are using the proper edition for the level of the product you have.

Order publications from the following:

Casino Data Systems
3300 Birtcher Drive
Las Vegas, NV 89118

Tel: 1-800-748-4156

Fax: (702) 269-5171

A User Response Notes form is provided at the back of this document for customer's comments. You can mail this form or any other comments to the address above.

© Copyright Casino Data Systems 1996. All rights reserved.

Document Conventions

This document uses the following conventions:

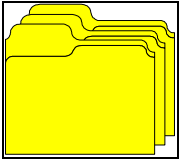
- “Preliminary” appears at the top and bottom of each page of the first release of a User/Reference or Hardware Manual. This does not appear on subsequent releases of a manual.
- The last two digits of the document number show the release number of the manual. The first release is numbered -00. Therefore, 23-00106-02 indicates the third release of the manual.
- The effective date of the manual is shown at the bottom of each page.

Typographical Conventions

This document uses the following typographical conventions:

Convention	Type of Information	Example
Bold type	Dialog box labels and options.	Select the Spaces check box.
	Dialog box titles.	The Open dialog box contains a list of folders.
	Menu names and commands.	On the File menu, click Open .
	Buttons.	Click on Look In Favorites .
	Type the information exactly as it appears.	Type open .
ALL CAPS	File names.	Open CDSTEST.EXE.
<SMALL CAPS> with brackets	Press the named key.	Press <ENTER>.
“Quotation Marks”	Program display messages.	At the “More Input?” prompt...
	Field names.	Highlight “Player Name” on the “Slot Club” screen.
	Screen names.	The “User Maintenance” screen appears.
	Section headings within the document.	See “Overview” for more information.
<i>Italics</i>	Book titles.	Refer to <i>The Elements of Style</i> for details.
	New terms and emphasis.	<i>Never</i> remove the warning label.
	Placeholder for information provided by the user.	Type <i>password</i> .
Title Caps	Folders and directories.	My Documents.
	Icons.	Click the Microsoft Word icon.
	Named windows.	Help window.
<KEY1>+<KEY2>	Press and hold down the first key while pressing the second key, then release both keys.	Press <CTRL>+.
<KEY1>,<KEY2>	Press and release the keys one after the other.	Press <CTRL>,.





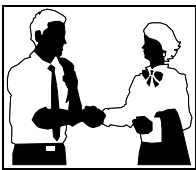
Contents

CDS Manual Notice.....	2
Document Conventions.....	2
Typographical Conventions.....	4
Contents	5
Introduction	7
Overview	8
Controlling Signs	9
Configuring Signs	10
Sign Sequences.....	10
Sign Colors.....	11
Sign Dollar Rollovers.....	11
Totalizer Dollar Values	12
Installation	13
Installation Checklist	13
Hardware Installation.....	14
Software Installation.....	14
Operation	15
Totalizer Main Menu	15
Navigating Menus and Screens.....	15
Sign Configuration.....	16
Broadcast Sequence.....	17
Rollover Setup	18
Manual Adjustments	19
Audit Reporting	20
Run Audit Report	20
Run Audit Code List.....	21
Browse Audit Report.....	21
Print Audit Report	22
System	22

PRELIMINARY

User Maintenance	22
Users.....	23
Groups	25
Quit.....	25
EditBase Operation.....	26
Technical Reference	27
Hardware Requirements.....	27
MP Server.....	27
Supported Meters	27
Software Prerequisites	27
User Response Notes	28
Appendix A – Cable Drawings.....	29





Introduction

This document provides reference materials for the ProLINK Totalizer program. Notes on installation are furnished along with information on operation. Technical reference materials are also included.

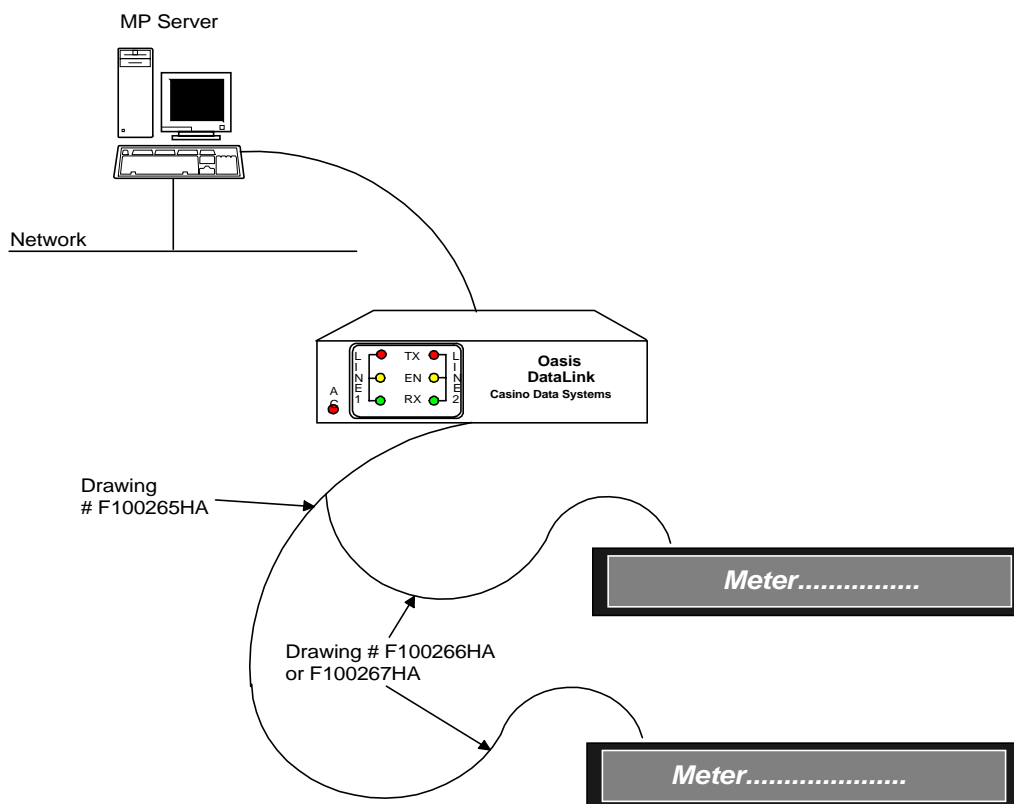


Overview

The ProLINK Totalizer application (TOTALIZE.EXE) is a configuration utility that provides for sign setup and maintenance. As used in conjunction with the MP Server dedicated workstation, the program allows several payout-related dollar values to be accumulated over six different time periods. These values may be displayed on up to 40 CDS ProVIEW™ or Mikohn Cham-1 or Cham-2 protocol progressive meters.

The MP Server is an application that accumulates dollar totals and sends the values to signs on the casino floor. It is also used to process Maintenance Monitor transactions and RapidPAGE™ activity.

Configuration changes made through the ProLINK Totalizer are automatically recognized by MP Server and will generally be reflected in the signs on the floor within a few minutes of the change.



ProLINK Totalizer Installation

Using meter information from the casino floor, the values for dollars played, dollars paid by machine, dollars paid by hand, and total dollars paid are accumulated for “current period” (today), “previous period” (yesterday), week to date, month to date, year to date, and lifetime. Each of these values is recorded effective the first day that the ProLINK Totalizer is run. That is, if ProLINK Totalizer was first run on December 1, 1994, none of the values would include activity prior to that date. Year-to-date values would reflect play since 12/1/94, until 1/1/95, when they would reset for the new year.

Controlling Signs

The ProLINK Totalizer allows multiple signs from different manufacturers to be controlled simultaneously. All signs are controlled from the MPST server workstation via that computer’s COM port(s). Up to four separate COM lines are supported. All signs that are connected to any COM port on the MPST server computer must use the same message protocol, that is, they must all be ProVIEW signs or Mikohn signs. Dissimilar signs may not be controlled through the same COM port on MPST server. To control signs from CDS and Mikohn, multiple COM ports must be used.

Signs are connected to MPST server via an intermediate OASIS™ DataLink™ box. This box allows for two separate COM lines from the computer to be routed to two separate communications lines for signs. To run three or four COM lines, two DataLinks would be required. Cables are provided to link the COM port(s) on the MPST server computer to the DataLink. Cables to connect the DataLink to the signs are made by the customer using parts and schematics provided by CDS.

Example with a Single COM Port

The customer has two Mikohn Cham-2 signs. Both signs may be controlled through a single COM port on the MPST server. The customer will receive the following items from CDS:

- One DataLink.
- One cable to connect the computer to the DataLink.
- Two cables to connect the signs to the communications link.
- Parts for the customer to make the communications link (the cable run from the DataLink to the signs). The two sign connection cables plug into this link.



Example with Multiple COM Ports

The customer has two Mikohn Cham-2 signs and one ProVIEW sign. The Cham-2 signs may be controlled through one COM port. The ProVIEW sign must be controlled through another COM port. The customer will receive the following items from CDS:

- One DataLink.
- Two cables to connect COM1 and COM2 to the DataLink.
- Two cables to connect the Mikohn signs to their communications link.
- One cable to connect the ProVIEW sign to its communications link, and parts for the customer to make two communications links (one for the two Mikohn signs and one for the ProVIEW sign).

Configuring Signs

Signs may be configured via software to either show a progressive value (one of the dollar values accumulated), or a set of general broadcast text messages. Each progressive sign is configured independently, while all broadcast signs show the same broadcast message at the same time. Broadcast messages may be entered in sequence, with up to 10 unique messages in a series. Message text can contain embedded total values, denoted with the “@” symbol.

Sign Sequences

ProLINK Totalizer runs through all messages in the sequence as defined, then starts over with the first message in the sequence again, cycling continuously. As each message becomes the “current” message, any embedded values are determined at that time. For example, assume the broadcast messages are set to a sequence of:

- 1) Today's Total Payouts Are: @
- 2) Yesterday's Total Payouts Were: @

Signs on broadcast mode would first display the text message, “Today's Total Payouts Are: \$1,234.56,” where \$1,234.56 is the total payouts amount at the time the message was displayed. The message may display several times before advancing to the next message.

The signs would next display “Yesterday's Total Payouts Were: \$999,999.99,” where \$999,999.99 was the total paid out yesterday.



The signs would begin the sequence again, this time displaying “Today’s Total Payouts Are: \$1,789.12,” where the value has been updated as of the time the message was displayed.

The signs would continue to “Yesterday’s Total Payouts Were: \$999,999.99,” since yesterday’s numbers will not change during the day.

Any sign on progressive mode will “progress” the value assigned to that sign, occasionally switching to a message of choice before continuing to progress the value. For example, if a sign is set to display current payouts, the meter will show a constantly incrementing value that is progressing towards the current payout value at all times. Every number of specified seconds the sign will display a text message such as “Today’s Total Payouts ...,” then resume the progression of the dollar value.

Sign Colors

Color control is provided for all signs on an individual basis, so that any sign may be set to any color supported by the sign. Standard colors are Red, Green, Yellow, Multi, and Reggae (a tri-color display of three horizontal color bands, supported by CDS ProVIEW signs).

Sign Dollar Rollovers

Dollar values are accumulated and reset to zero (rolled over) on a regular basis, as follows:

- Lifetime values cannot be reset.
- Year-to-date values automatically reset to zero at midnight on January 1.
- Month-to-date values automatically reset to zero at midnight on the first of the month.
- Week-to-date values reset to zero at midnight of any day of the week established by the user.
- Current values reset to zero at any time for each day of the week and, optionally, are not required to roll over on a given day.

For example, the customer may wish to show today’s payouts for each weekday, but lump all weekend play together. To do this, each weekday would roll over at the specified time, while Saturday and Sunday would not roll over. Therefore, at any time on Friday, Saturday, or Sunday the current values would reflect play since the last rollover on Friday at the specified time.

- Previous values are always the last current values. For example, if every day is set to roll over at 5:00 a.m., on Thursday at 5:01 a.m.



the previous values are the values that were current just before the rollover. (That is, Wednesday's values will be displayed.)

In the above example where all weekend play was accumulated, on Monday the previous values would be all play for the whole weekend.

Totalizer Dollar Values

- Coin In and Coin Out (Dollars Played and Dollars Paid) are accumulated directly from the machine meters on the floor.
- Hand Pay Jackpots are read from the CDS Jackpots/Fills program as they are manually entered.
- Any jackpots that are voided before rollover for the day will be adjusted at rollover time.

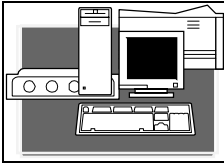
If a \$1,000 jackpot is entered at 5 p.m., the Hand Pays and Total Payouts will increase by \$1,000. If the jackpot is voided at 8 p.m., the \$1,000 will still be reflected in both values. At rollover time (for example, 12:00 a.m.) the \$1,000 will be deducted before rollover. After rollover, the "Previous" values will reflect the voided jackpot. If a jackpot is voided after rollover time, it must be manually adjusted.

- Coin In, Coin Out, or Hand Pays can be manually adjusted for any date.

Based on the effective date of the adjustment, the appropriate values are adjusted by the entered amount. For example, if a \$5,000 adjustment is entered on Thursday, 11/17/94, and effective Sunday, 11/13/94, and week-to-date values roll over on Tuesdays, the \$5,000 will be deducted from month-to-date, year-to-date, and lifetime values, but not from week-to-date, which had already rolled over after the adjustment.

- The EditBase program allows the user to directly edit Totalizer values on the MPSTServer. This program can be used to change the Coin In, Coin Out, Hand Pays, and Total Pays for the current period, previous period, week to date, month to date, year to date or lifetime.
- The maximum allowed value to send to a ProVIEW sign is \$9,999,999.99; the maximum for a Mikohn sign is \$99,999,999.99. The amount that is practicable to be displayed on a sign will depend on the sign size and the font in use.





Installation

ProLINK Totalizer is typically installed by CDS staff. This section provides a reference for installing and trouble shooting the program.

Installation Checklist

1. Determine the number of signs to be hooked up.
2. Determine the customer's desired sign configuration. Items to consider include:
 - How many signs will be involved?
 - How many totals should be displayed simultaneously?
 - Will the user wish to display text messages as well as progressing numbers?

It is possible to display two numbers on one sign in two different windows. This requires a special sign configuration that is typically not installed in a sign when it ships from the manufacturer. To accommodate multiple numbers on one sign, the sign must be programmed to display multiple separate jackpot levels. Contact the sign manufacturer for details. If the sign will only display a single number, the Totalizer software should be able to configure the sign.

3. Ensure that the MPST server workstation will be dedicated to the Totalizer application and will not be used by other applications.
4. Ensure that all hardware, including an OASIS DataLink box and the necessary cables, is available on site.
5. Ensure that training materials are available to the customer.

Hardware Installation

1. Set up the dedicated workstation for the MP Server. Make sure the workstation is attached to the network and has login access rights.
2. Attach the OASIS DataLink to the MP Server workstation via serial (COM) port(s).
3. Install the progressive signs.
4. Create data communications cable(s) to run from the OASIS DataLink to all progressive signs.
5. Connect all progressive signs to data communications cable(s), and connect the cable(s) to the OASIS DataLink.

Software Installation

1. Install MPS2.EXE and TOTALIZE.EXE to the \OASIS\EXE directory on the network.
2. Install CDSPARMS.INI to the \OASIS directory on the network.
3. Install CDSPARMS.INI to the C:\ directory on the MP Server workstation.
4. Edit RUN.BAT in \OASIS on the network, adding the following lines:

SET GLOBALINI=\OASIS

SET LOCALINI=C:

5. Edit CDSPARMS.INI on the network as necessary, ensuring that data paths are set properly, and removing ';' (comments) to change statements to active lines.
6. Edit CDSPARMS.INI on the MP Server workstation, ensuring that the proper DPU range is specified as well as the baud rate(s) required for any sign ports.
7. Have local MIS personnel establish a user account for MP SERVER, with an auto-executing login to the network, with the following command from \OASIS on the network:

RUN MPS2

8. Reboot the MP Server workstation to automatically load MP Server.
9. From another network workstation, enter the following to start ProLINK Totalizer and configure signs:

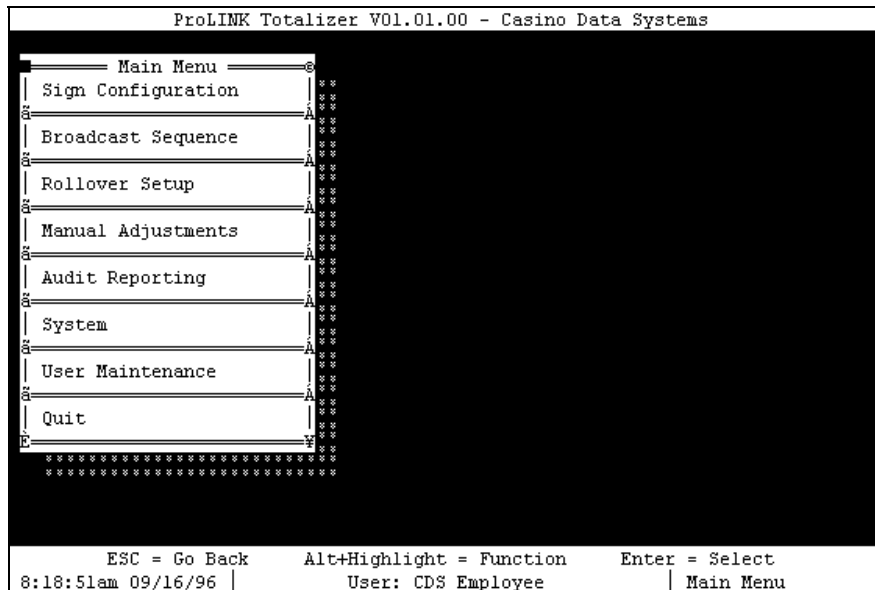
RUN TOTALIZE





Operation

This section provides the information necessary for the user to interact successfully with the ProLINK Totalizer and EditBase programs.



Totalizer Main Menu

The following options are available on the Totalizer **Main Menu**:

Sign Configuration	Add, change, and delete sign definitions.
Broadcast Sequence	Add, change, and delete broadcast messages.
Rollover Setup	Define rollover days and times.
Manual Adjustments	Manually enter adjustment values for Totalizer figures.
Audit Reporting	Report on user activity for a given date range.
System	Logon as a different user.
User Maintenance	Add, change, and remove program users and user groups.
Quit	Exit from the Totalizer program.

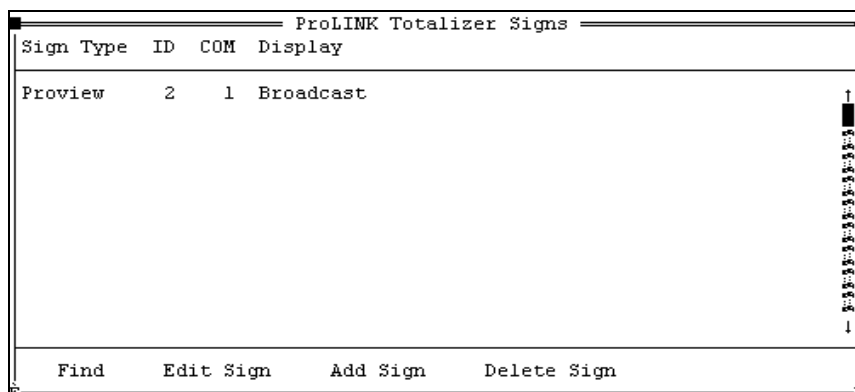
Navigating Menus and Screens

↑ and ↓ or <ALT> + hot key	Select an option from a Totalizer menu.
<TAB> or <ALT> + hot key	Select a command from a Totalizer screen.
<ESC>	Exit a screen without making any changes.
<SAVE>	Save a change entered to the screen.

Sign Configuration

Select **Sign Configuration** from the **Main Menu** to access the “Sign Configuration” screen.

Note: For new signs or signs that have not been configured previously, please refer to *ProVIEW™ Mate Version 1.06 Technical Note* (CDS Document No. 23-00076) for information on configuring ProVIEW I signs.



The following options are available on the “Sign Configuration” screen:

Add	Add a new sign.
Delete	Remove an existing sign.
Edit	Change a sign’s Sign Type, Sign ID, COM Port, or Display.
Find	Locate a sign.

The following information is required when adding a new sign:

Sign Type	The type of sign (Proview, Cham-1, Cham-2, and Cham-2-AGL.) Use the space bar to scroll through the valid values.
Sign ID	A unique address for the sign, usually visible when the sign is powered up. The system can hold up to 40 signs.
COM Port	The COM port coming from the back of the processor. Up to four sign/COM ports can be used for the display. When selecting a COM port, use the same manufacturer's sign. Do not mix ProVIEW and Mikohn signs on the same line.
Display	Type of display. Values are Broadcast (message), Odometer (progressive payouts), and Off. Use the space bar to scroll through the valid values.

Broadcast Sequence

Select **Broadcast Sequence** from the **Main Menu** to access the “Sequence Editor” screen.

ProLINK Totalizer V01.01.00 - Casino Data Systems				
Sequence Editor				
Sequence Description CDS DEFAULT SEQUENCE				
Messages 4				
Message Text	Value	Color	Time	
1 Current Coin In	Current Coin In	Multi	15	
2 Current Hand Pays	Current Hand Pays	Red	15	
3 Weekly Coin In	Weekly Coin In	Multi	15	
4 Weekly Hand Pays	Weekly Hand Pays	Green	15	
Add Line Clear Line Del Line Move Line Save				
ESC = Go Back Alt+Highlight = Function Enter = Select 8:26:23am 09/16/96 User: CDS Employee Main Menu				

The following options are available on the “Sequence Editor” screen:

- Add Line** Add a line to a sequence. The Editor holds up to 10 messages.
- Clear Line** Clear text from an existing line.
- Del Line** Remove an existing line.
- Move Line** Move a line within a sequence.
- Save** Save the changes entered.

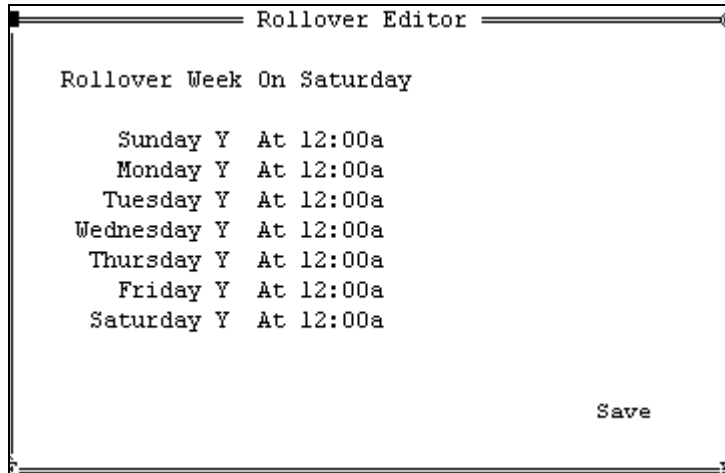
The following information is required when adding a message:

- Line** Line number for the message; enter at the program prompt.
- Message Text** Text of the message.
- Value** Current, previous, weekly, monthly, yearly, or lifetime dollar values, or “None”. Use the space bar to scroll through the valid values. Select “None” for use with a Broadcast Display.
- Color** Use the space bar to scroll through the valid values (Red, Green, Yellow, Multi, or Reggae).
- Time** The number of seconds for the message to scroll.



Rollover Setup

Select **Rollover Setup** from the **Main Menu** to access the “Rollover Editor” screen.



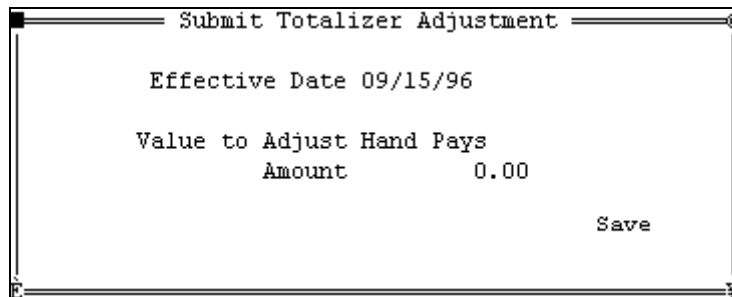
```
Rollover Editor
Rollover Week On Saturday
Sunday Y At 12:00a
Monday Y At 12:00a
Tuesday Y At 12:00a
Wednesday Y At 12:00a
Thursday Y At 12:00a
Friday Y At 12:00a
Saturday Y At 12:00a
Save
```

The following information can be edited using the “Rollover Editor” screen:

- | | |
|---------------|---|
| Rollover Week | Select the day of the week for the rollover week. Use the space bar to scroll through the days of the week. |
| Day | Enter “Y” or “N” next to each listed day to select the days to roll over the jackpot totals. |
| Time | Enter the time of day and “A” (for day) or “P” (for night) to specify the time to roll over the jackpot totals. |

Manual Adjustments

Select **Manual Adjustments** from the **Main Menu** to access the “Totalizer Adjustment” screen. (See “EditBase Operation,” below, for an alternative method for editing Totalizer values.)



```

===== Submit Totalizer Adjustment =====
Effective Date 09/15/96
Value to Adjust Hand Pays
Amount          0.00
Save

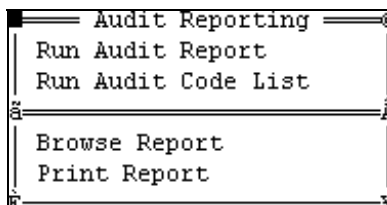
```

The following information can be edited using the “Totalizer Adjustment” screen:

Effective Date	Defaults to the previous day. Enter the date to be adjusted.
Value to Adjust	Value to be adjusted on the signs. Use the space bar to scroll through valid values (Hand Pays, Coin In, and Coin Out).
Amount	Adjustment amount. Entering a negative number will lower the value, while a positive number will increase the value.

Audit Reporting

Select **Audit Reporting** from the **Main Menu** to access the **Audit Reporting** menu.

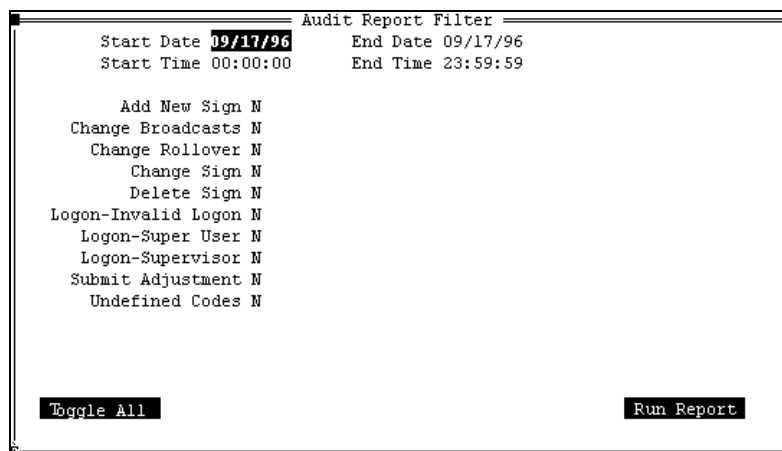


The following options are available on the **Audit Reporting** menu:

Run Audit Report	Run the Audit Report to be browsed and/or printed using the specified options.
Run Audit Code List	Run the Audit Code List to be browsed and/or printed.
Browse Audit Report	Select and browse the most current Audit Report or Audit Code List.
Print Audit Report	Select and print the most current Audit Report or Audit Code List.

Run Audit Report

The “Audit Report Filter” screen will be displayed when **Run Audit Report** is selected from the **Audit Reporting** menu.



1. Enter the start and end dates and times for the report.
2. Select “Y” for any event you wish to report or select “Toggle All” to change all options to “Y” or “N.”

The report created will be named CDSAUDIT.RPT.

3. Select **Browse Report** or **Print Report** from the **Audit Reporting** menu.

PRELIMINARY

Run Audit Code List

Select **Run Audit Code List** from the **Audit Reporting** menu to obtain a list of Audit Codes.

The report created will be named AUDCODES.RPT.

Browse Audit Report

Select **Browse Report** from the **Audit Reporting** menu to view the current Audit Report or Audit Code List on the screen.

File to Browse						
File name: *.RPT						
Directory: G:\OASIS\EXE						
Files	Size	Date	Time	Directories		
audcodes.rpt	410	9/17/96	1:24p	▲	..	▲ OK
btrv-err.rpt	28018	9/16/96	11:20a		drivers	
cdsaudit.rpt	874	9/03/96	3:42p	*	[A:]	* Cancel
codelist.rpt	297	9/12/96	1:36p	*	[C:]	*
emplist.rpt	0	9/11/96	2:35p	*	[D:]	*
faillist.rpt	297	9/12/96	11:21a	*	[F:]	*
jpfcoll.rpt	18379	8/29/96	10:22a	*	[M:]	*
luxor.rpt	0	7/29/96	9:14a	*	[O:]	*
omni.rpt	0	9/09/96	2:52p	▼	[R:]	▼

Select the CDSAUDIT.RPT or AUDCODES.RPT report file from the list displayed on the “Files to Browse” screen.

The selected report will be displayed.

G:\OASIS\EXE\CDSAUDIT.RPT					
AUDIT REPORT					
DATE	TIME	NUM	DESC	MESSAGE	
----	----	---	----	-----	
111 CURRENT WINDOW 111					
AUDIT REPORT					
DATE	TIME	NUM	DESC	MESSAGE	
----	----	---	----	-----	
09/17/96	09:24:47 am	3	Logon-Super User	Super User Logged On User:	
09/17/96	01:14:33 pm	3	Logon-Super User	Super User Logged On User:	

G:\OASIS\EXE\AUDCODES.RPT					
AUDIT CODES REPORT					
DESC	CODE				
----	----				
111 CURRENT WINDOW 111					
AUDIT CODES REPORT					
DESC	CODE				
----	----				
Add New Sign	258				
Change Broadcasts	259				
Change Rollover	260				
Change Sign	256				
Delete Sign	257				
Logon-Invalid Logon	1				
Logon-Super User	3				
Logon-Supervisor	2				
Submit Adjustment	261				
Undefined Codes	65535				
Lines: Top: 00001-00004 Bottom: 00001-00014 Columns: 001-078					



Print Audit Report

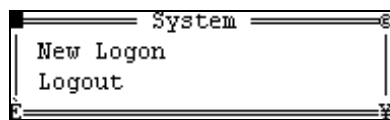
Select **Print Report** from the **Audit Reporting** menu to print the current Audit Report or Audit Code List.

Select the CDSAUDIT.RPT or AUDCODES.RPT report file from the list displayed on the “Files to Print” screen.

The selected report will be printed.

System

Select **System** from the **Main Menu** to access the **System** menu.

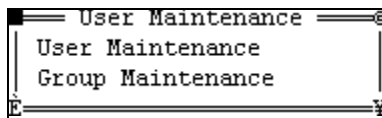


The following options are available on the **System** menu:

- | | |
|------------------|---|
| New Logon | Logon to Maintenance Monitor as a different user. |
| Logout | Logout of Maintenance Monitor. |

User Maintenance

Select **User Maintenance** from the **Main Menu** to access the **User Maintenance** menu.



The following options are available on the **User Maintenance** menu:

- | | |
|--------------------------|---|
| User Maintenance | Add or remove users from the Totalizer program or edit a user established in the program. |
| Group Maintenance | Add or remove groups from the Totalizer program or edit a group established in the program. |

PRELIMINARY

Users

Select **User Maintenance** from the **User Maintenance** menu to access the “Users ‘Owned’ by ProLINK Totalizer” screen.

Users "Owned" by ProLINK Totalizer			
User Name	Logon Name	Last Logon Time	Last Chg
Software Supervisory User	SUPERVISOR	<NEVER LOGGED IN>	09/06/96
<div> <div>↑</div> <div>↓</div> </div>			
<div>Find Add User Security Edit User Delete User</div>			

The following options are available on the screen:

- Find** Locate a user. Enter the name of the user at the program prompt.
- Add User** Add a user as described in “Adding a User,” below.
- Security** Edit security options for the user. Select the user to be edited from the list displayed on the screen.
- Edit User** Change the password for a user. Select the user to be edited from the list displayed on the screen.
- Delete User** Delete a user. Select the user to be deleted from the list displayed on the screen.

Adding a User

1. Select **Add User** from the “Users ‘Owned’ By The ProLINK Totalizer” screen.

The “Users NOT ‘Owned’ by ProLINK Totalizer” screen will be displayed.

Users NOT "Owned" by ProLINK Totalizer	
User Name	Logon Name
CRAIG	
David Andros	DAVID
Gregory D. Galloway	GMAN
Lin	LIN
Mech	
Merlini, Keri	KERI
Mike Germano	MIKE

Find Make New User

2. If you are using Maintenance Monitor, users created in that program will be listed. Press <ENTER> on the user's name in the list to automatically add the user to the Totalizer.

Otherwise, if the user is not listed, select **Make New User**.

The “Software User” screen will be displayed.

- a) Enter the name of the new user at the program prompt.
- b) If the user will make changes to the software, set the login access to “Y” and enter the logon name and password to be used to set security settings for the Totalizer. Otherwise, if the user will not make software changes, set the login access to “N.”

3. Select **Security** from the “Users ‘Owned’ By The ProLINK Totalizer” screen.

The “Security Settings” screen will be displayed.

Security Settings for David Andros	
Set Sign Configuration []	Add Groups []
Set Broadcast Messages []	Delete Groups []
Set Rollover Days []	Edit Groups []
Adjust \$ Values []	Link Users/Groups []
User Maintenance Menu []	Paging Functions []
User Maintenance []	Audit Report []
Add Users []	Generate Cards []
Delete Users []	Print Cards []
Edit Users []	
Group Maintenance []	

Toggle All Save

4. Set the desired security options using the space bar, or select “Toggle All.”

EditBase Operation

The EditBase program is used to edit Totalizer values on the MP Server.

1. Type the following command at the OASIS prompt in MS-DOS®:

run editbase <ENTER>

2. The “EditBase” screen will be displayed.

Press <TAB> to move among the amount fields on the screen.

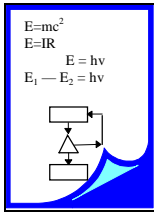
Editing file G:\OASIS\DATA\BASELINE.SAV

	Coin In	Coin Out	Hand Pays	Ttl Pays
Current	0.00	0.00	0.00	0.00
Prior	0.00	0.00	0.00	0.00
WTD	0.00	0.00	0.00	0.00
MTD	0.00	0.00	0.00	0.00
YTD	0.00	0.00	0.00	0.00
Life	422167161.30	423962889.15	13878657.85	437841547.00

<Ctrl+Enter> to Save Changes
<ESC> to exit without save the changes

3. Type the new amount(s) in the appropriate location(s).

Press <CTRL>+<ENTER> to save the changes or <ESC> to exit the program without saving changes.



Technical Reference

Hardware Requirements

MP Server

- 486/66 MHz, 8 megabyte (MB), 120 MB hard disk capacity, network adapter card (Ethernet or Token-Ring), one serial communication port.
- DataLink interface unit to connect the personal computer to the appropriate meter.
- Cables (as shown in Appendix A — Cable Drawings):
 - F100265HA - DataLink to Cham-1/2 (CDS Part No. 07-20217).
 - F100266HA - Cham-2 Pigtail (CDS Part No. 07-20219).
 - F100267HA - Cham-2 DB9 Pigtail (CDS Part No. 07-20218).
 - F100180HA - Sentinel Pigtail (CDS Part No. 07-20035).
 - F100246HA - COM In/Out (CDS Part No. 07-20027).

Supported Meters

- CDS ProVIEW Meters.
- Mikohn Meters configured for Cham-1 or Cham-2 protocols.

Software Prerequisites

- CDS Poller Version 4.20 or higher.
- MP Server Version 1.10 or higher.
- ProVIEW Mate Version 1.06 or higher.



User Response Notes

Any errors, omissions, or suggestions for improvement to this manual should be reported to:

Casino Data Systems
3300 Birtcher Drive
Las Vegas, NV 89118

Attn.: Publications Department

Tel: 1-800-748-4156

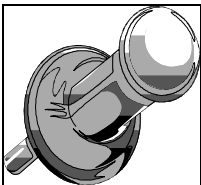
Fax: (702) 269-5171

Please let us know how you would rate this manual:

☐ Excellent ☐ Adequate ☐ Needs Improvement

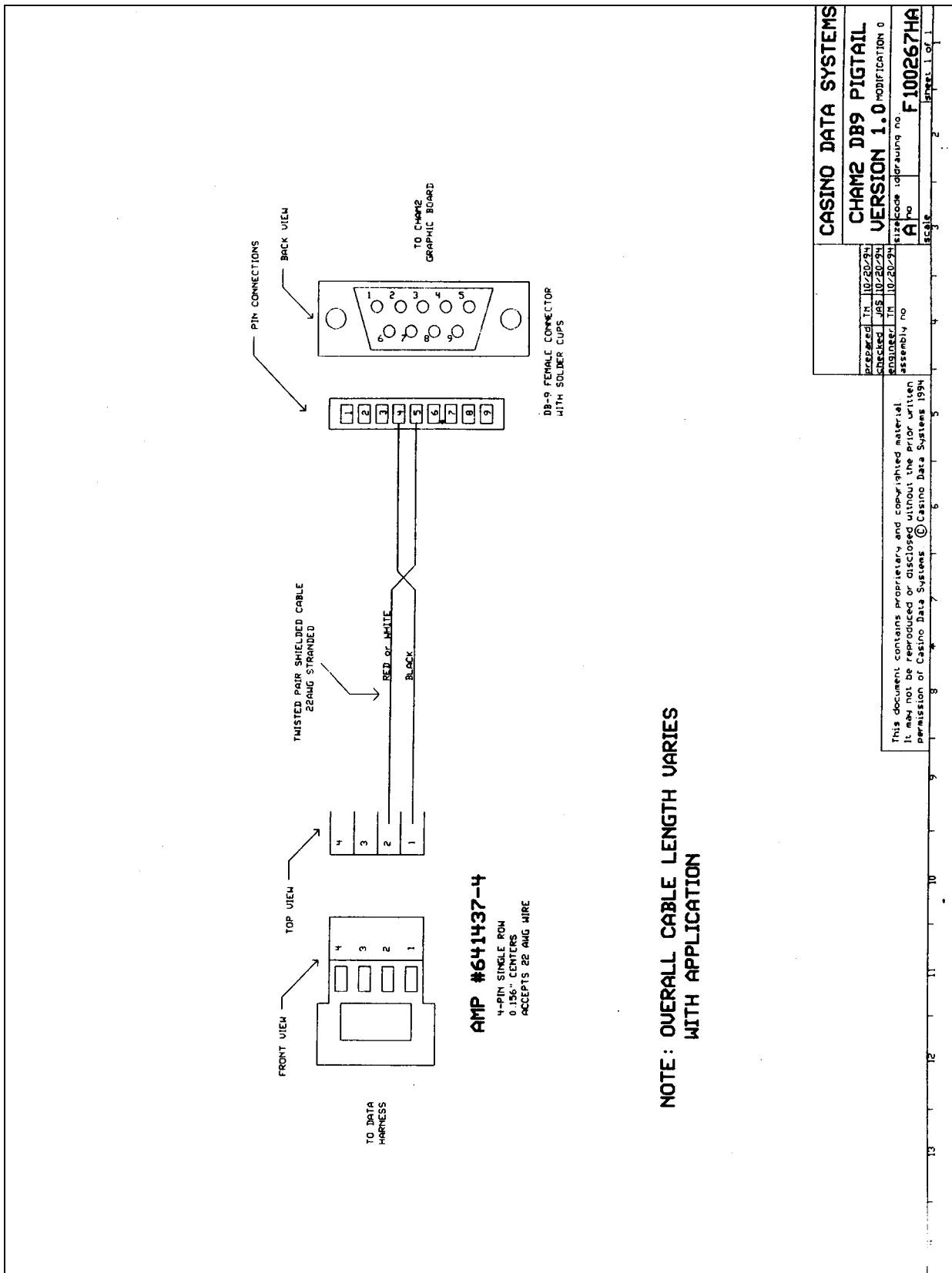
Suggestions for improvement:

PRELIMINARY



Appendix A – Cable Drawings

PRELIMINARY

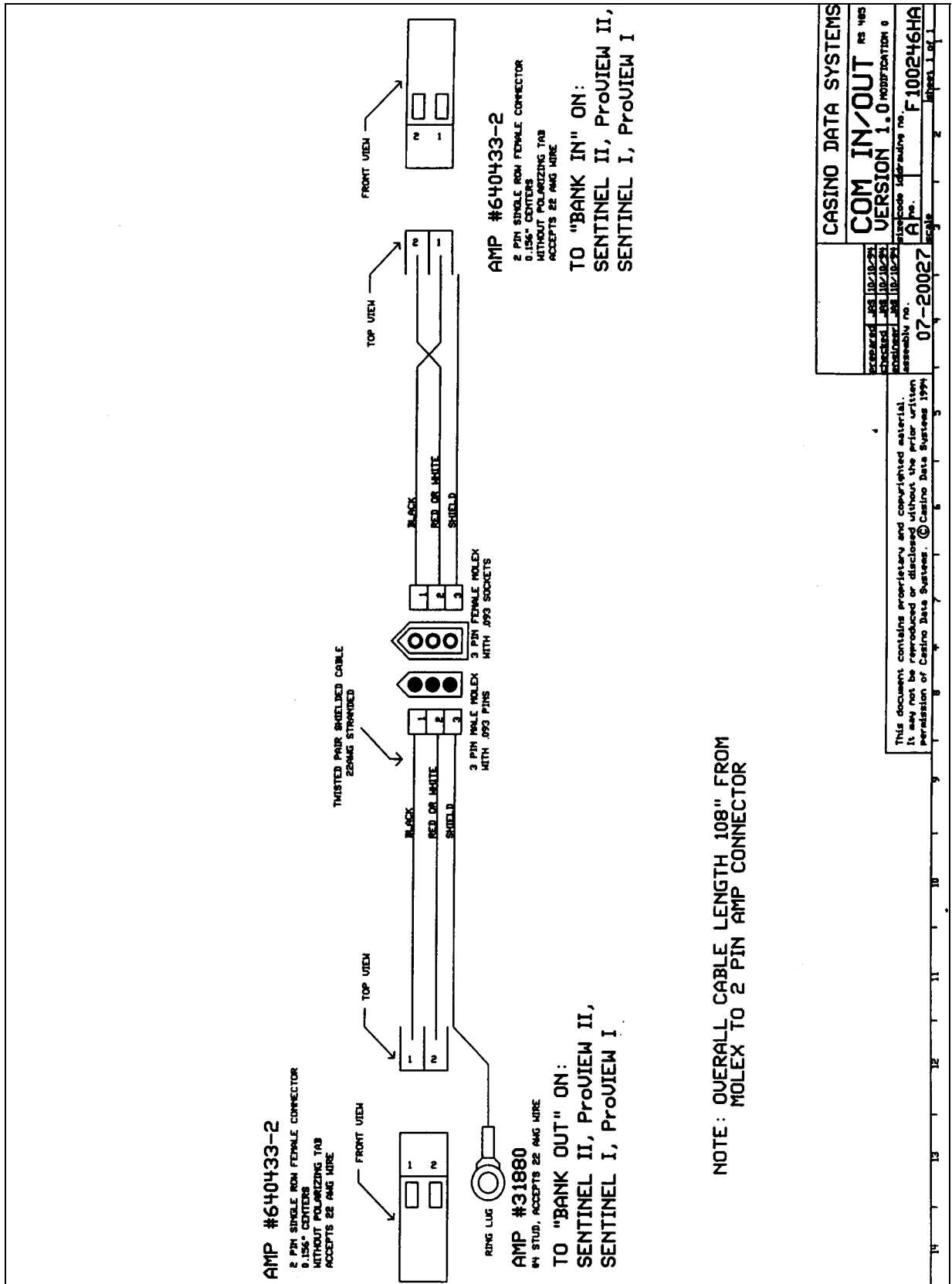


CASINO DATA SYSTEMS	
CHAM2 DB9 PIGTAIL	
VERSION 1.0 MODIFICATION 0	
Prepared IN 10/20/94	size/code idrawing no.
Checked JAS 10/20/94	assembly no.
Engineer IN 10/20/94	
A po F100267HA	
scale sheet 1 of 1	

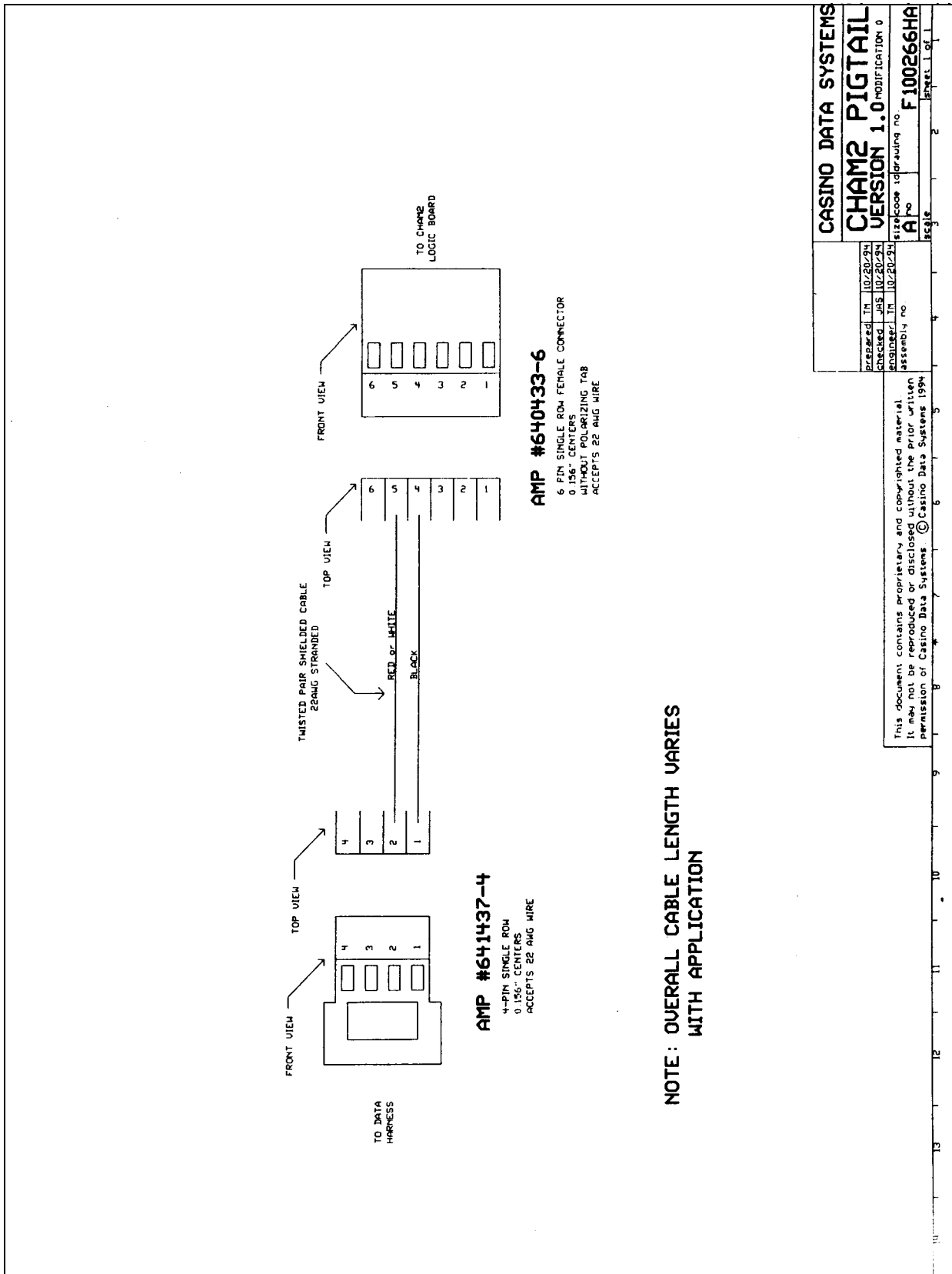
This document contains proprietary and copyrighted material. It may not be reproduced or disclosed without the prior written permission of Casino Data Systems. © Casino Data Systems 1994



PRELIMINARY



PRELIMINARY

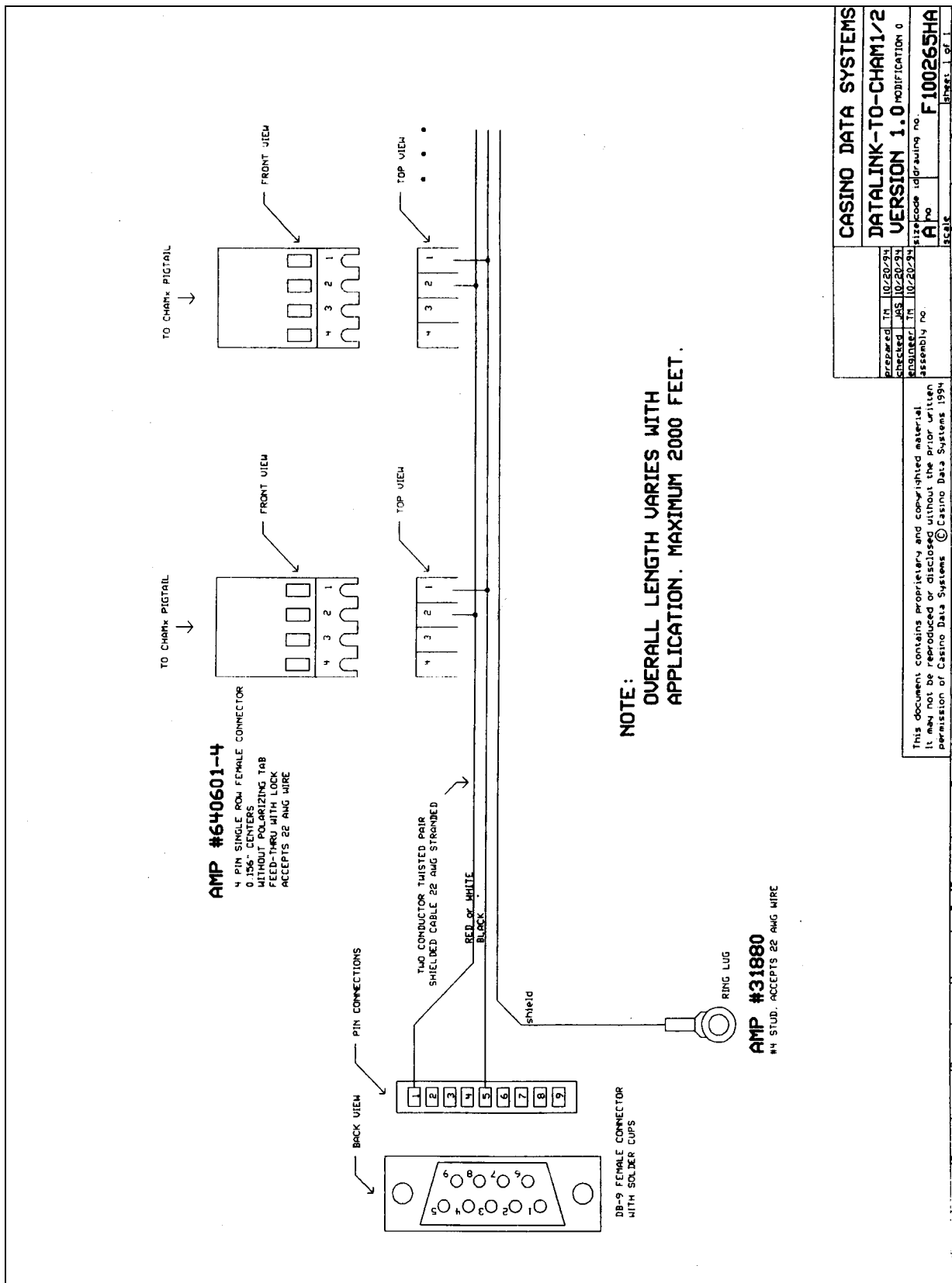


CASINO DATA SYSTEMS			
CHAM2 PIGTAIL			
VERSION 1.0 MODIFICATION 0			
Prepared: TM	10/20/94	sizecode idrawing no	F 100266HA
Checked: JRS	10/20/94	assembly no	A1
Approved: TM	10/20/94	scale	Sheet 1 of 1

This document contains proprietary and copyrighted material. It may not be reproduced or disclosed without the prior written permission of Casino Data Systems. © Casino Data Systems 1994



PRELIMINARY



CASINO DATA SYSTEMS			
DATALINK-TO-CHAM1/2			
VERSION 1.0 MODIFICATION 0			
DESIGNED BY	10-20-94	SIZE CODE	10-20-94
CHECKED BY	10-20-94	ASSEMBLY NO.	10-20-94
DATE	10-20-94	SIZE CODE	10-20-94
DATE	10-20-94	ASSEMBLY NO.	10-20-94
This document contains proprietary and copyrighted material. It may not be reproduced or disclosed without the prior written permission of Casino Data Systems © Casino Data Systems 1994		F100265HA	
Sheet 1 of 1		Page 1 of 1	



