



Cashflow SC66/8302

SPARE PARTS GUIDE (Level 2)



©Mars Inc. 2004 Printed in USA.

MEI is a trademark of Mars, Inc. Information is subject to change without notice. MEI has made every effort to ensure that the information in this document is accurate. However, we cannot be held responsible for any errors or omissions.

Revision G2

This page was intentionally left blank.

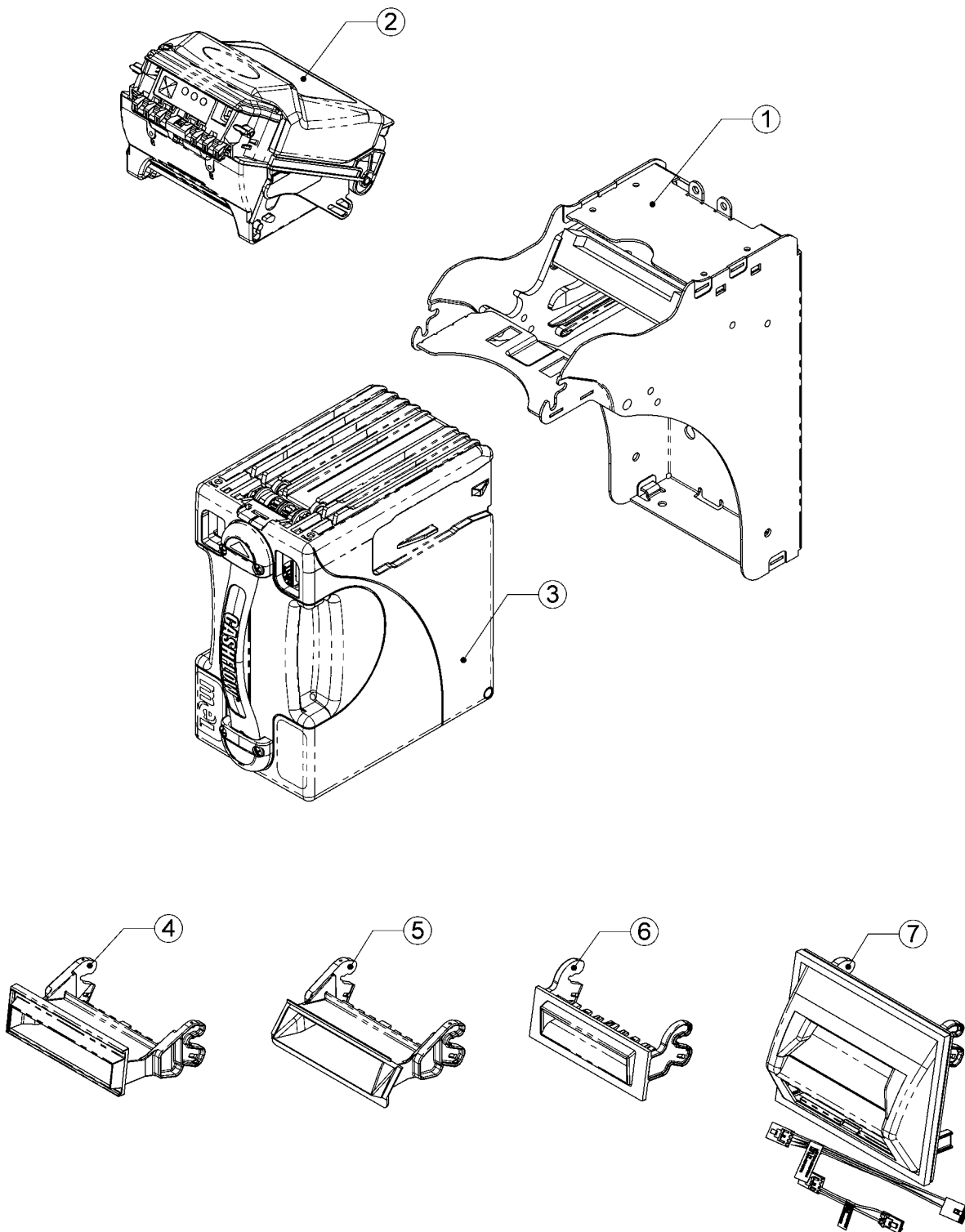
TABLE OF CONTENTS

Main Components.....	Page 3, 4
Acceptor Assembly.....	Page 5, 6
Upper Acceptor Assembly....	Page 7, 8
Lower Acceptor Assembly.....	Page 9, 10
Cashbox Assembly.....	Page 11, 12
Chassis Assembly.....	Page 13, 14
IGT Specific Interface Board & Harness.....	Page 15, 16
IGT 67mm LXS Bill Entry Guide.....	Page 17, 18

Main Components

Ref Num	Description	IGT Part Number	Part Number
1	Chassis		252018094P1
2	Acceptor Module SC66 GEN.2 SC83	62545390P1	252014091P1 252011001P1
3	Cashbox Qty 1 Qty 12 Qty 72		50043690P1 50043690P12 50043690P72
4	IGT S2000 66mm Bill Entry Guide (bulk 30)	58144290P	58144290P30
5	IGT 17" Video 66mm Bill Entry Guide (Qty30)	58144390	252011045
6	IGT Bartop 66mm Bill Entry Guide (Qty30)	58144590	252060009
7	IGT LXS 66mm Bill EntryGuide (Qty.15) 83mm Bill Entry Guide (Qty.15)	58144603 58144602	58144603P15 58144602P15

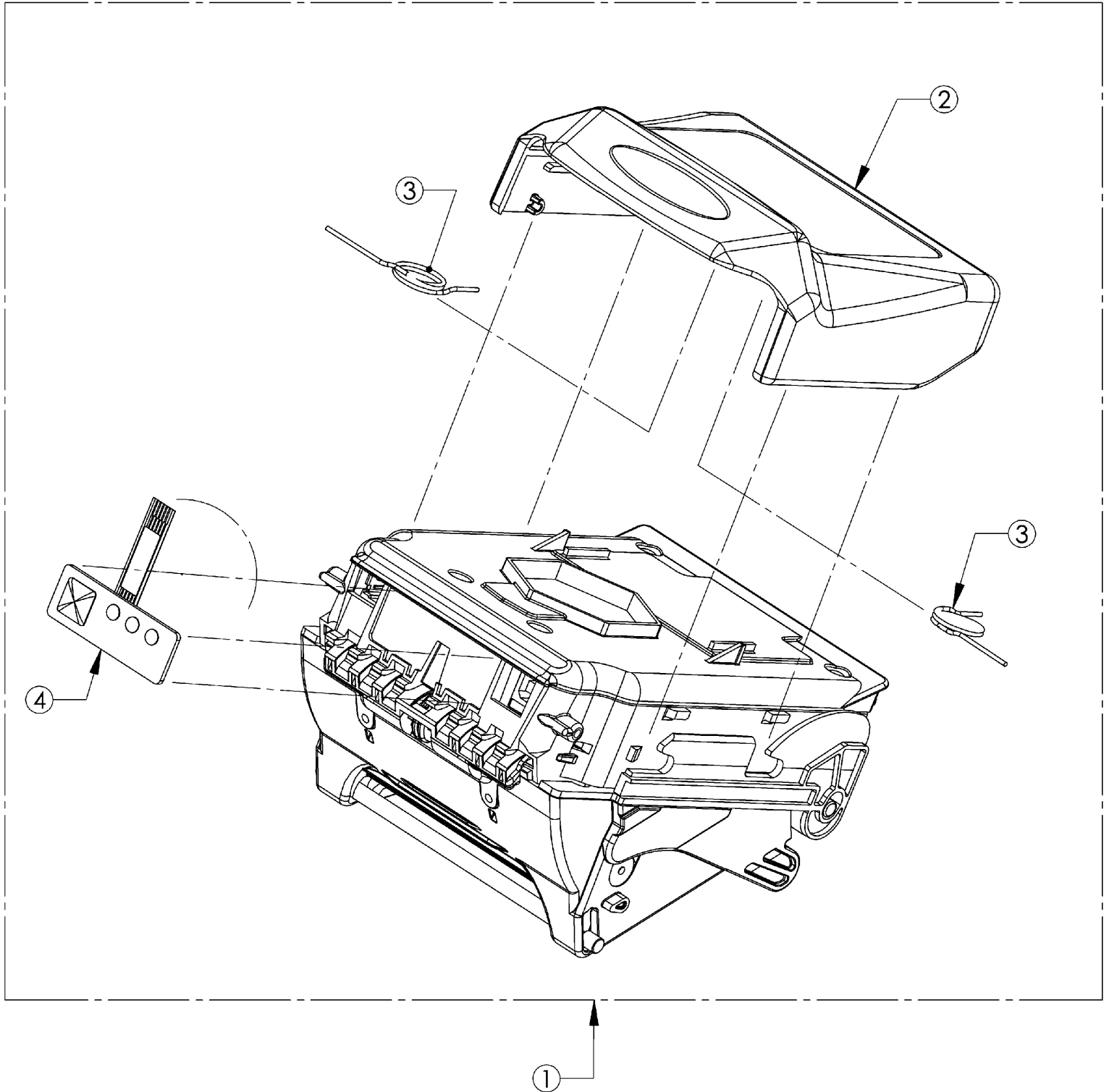
Main Components



Acceptor Assembly

Ref Num	Description	IGT Part number	Part Number
1	Acceptor Module		See pg. 3
	Yellow Latch Cover Assembly (bulk10) <ul style="list-style-type: none"> • Yellow Latch Cover • Springs • Label 		252011040P
2	Yellow Latch Cover- No label or springs (bulk 10)		252020101P
3	Springs, Acceptor Latch (bulk 100)		252043035P
n/s	Proms Blank, bulk 32		252060060P
n/s	Label, latch cover (bulk50)		252054014P
4	MMI Switch (bulk5)		252086004P

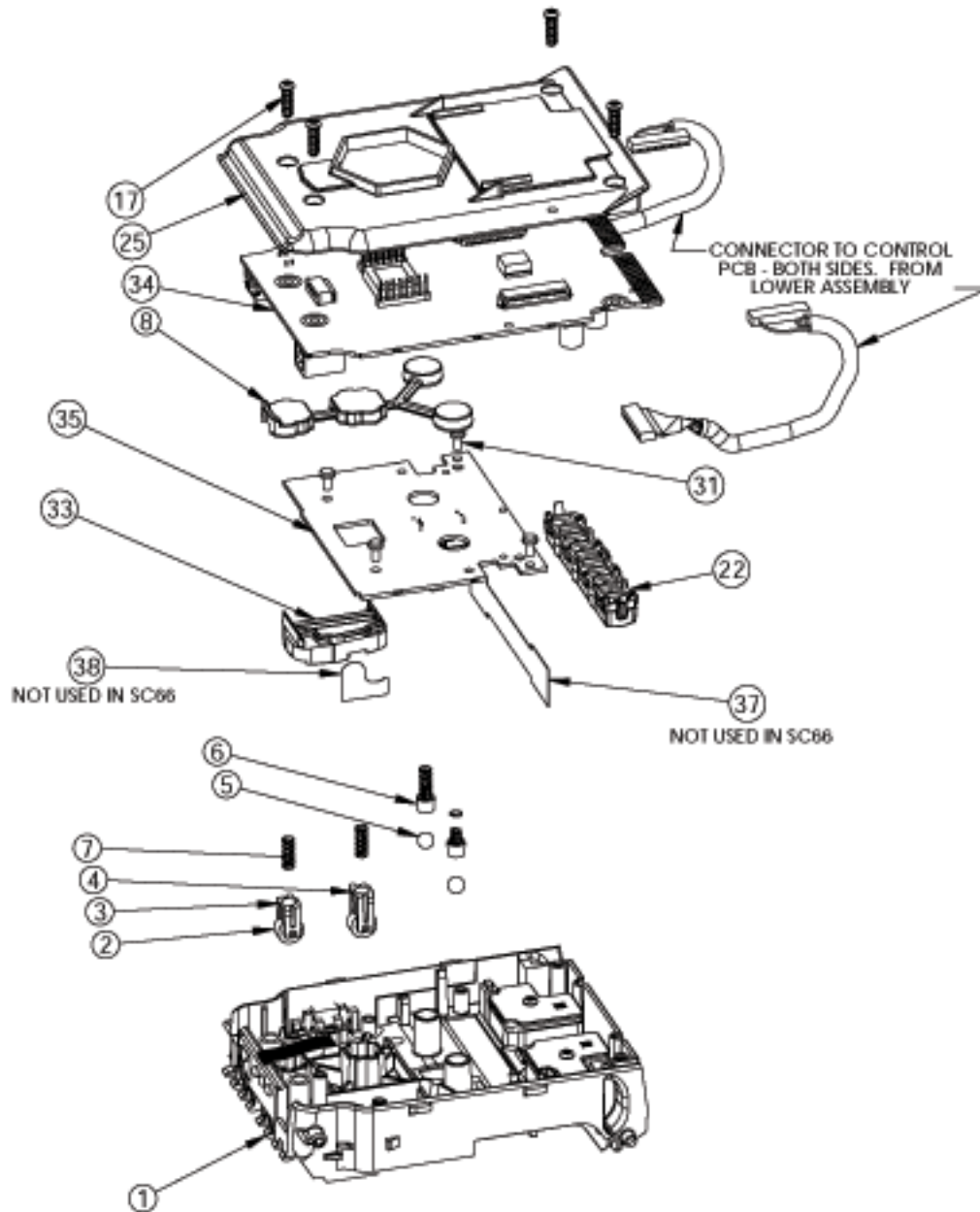
Acceptor Assembly



SC66/83 Upper Acceptor Assembly

Ref Num	Description	IGT Part Number	Part Number
1	Upper Hsg/Drive 4 bulk 1 SC83 SC66		252012097P1 252010098P1
2	Pinch Roller, bulk 100		250029011P
3	Pinch Roller Guide Front, bulk 100		252024109P
4	Pinch Roller Guide Rear, bulk 100		252029110P
5	Pinch, Bearing 6MM (derlin) bulk 100		252021234P
6	Plunger, Pinch Sphere bulk 100		252027111P
7	Spring, Pinch Roller bulk 100		252044026P
8	Gasket, Nip Roller HSG, Front bulk 100		252026245P
17	Srew, 4-20x12.7L,PH, Pozi bulk 100		252041036P
22	Assy, Receiver Housing bulk 5		252010037P
25	Cover, Control PCB bulk5		252026005P
31	Screw, 4-20x7.9L,PH, Pozi bulk 100		252045017P
33	Gasket, Light Ingress		252027292P
34	SC66 Gen. 1 Control brd. bulk 1 SC66 Gen. 2 Control brd. bulk 1 SC83 Control brd. bulk 1		111558387P 111550440P1 111550401P1
35	SC6602 Optics brd. (Gen.2)bulk 1 SC8302		111558441P1 111552400P1

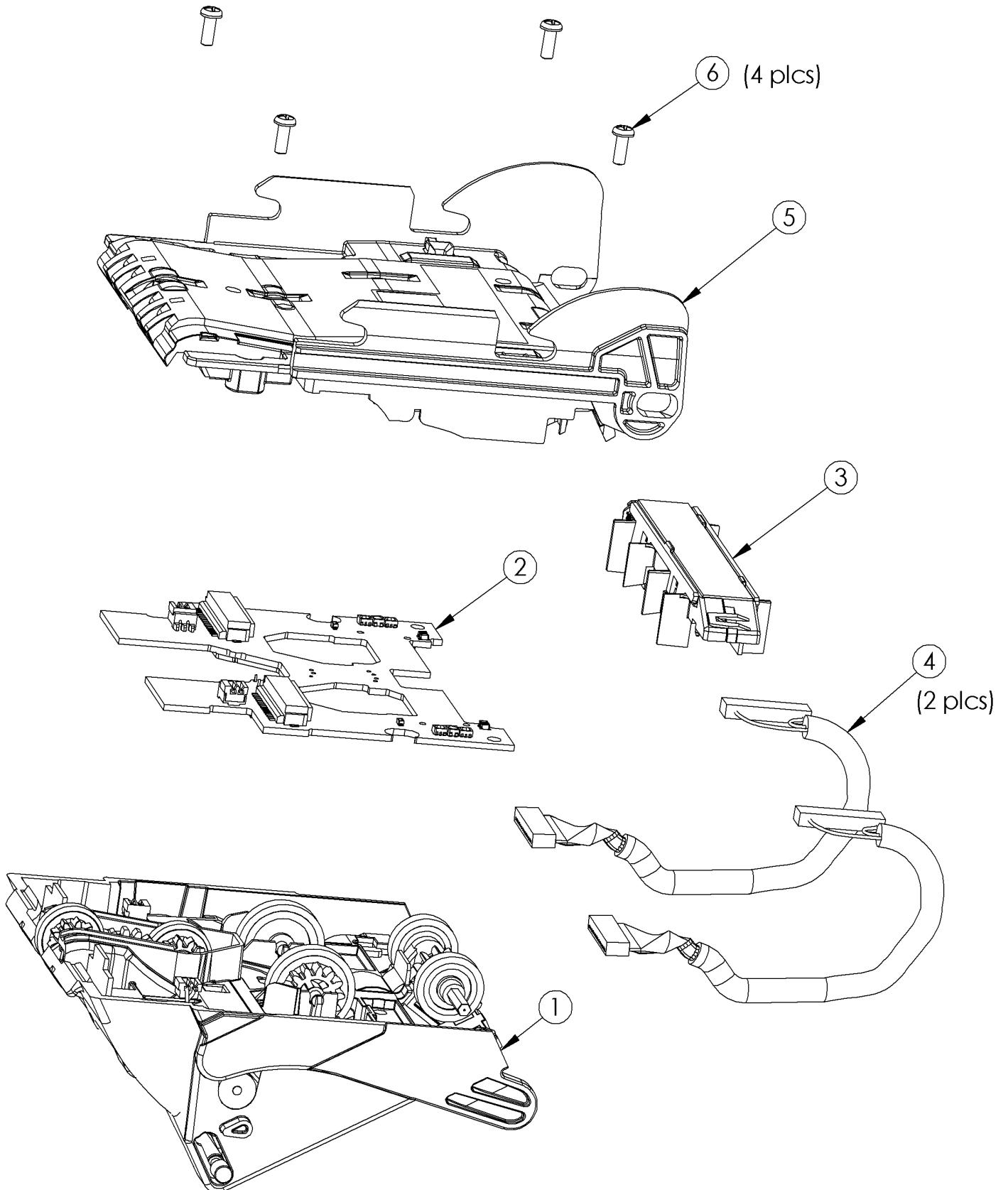
SC66/83 Upper Acceptor Assembly



Lower Acceptor Assembly

Ref Num	Description	IGT PartNumber	Part Number
1	Acceptor Drive Assembly SC66 SC83		252010093P1 252017003P1
2	SC66 Led brd. (GEN.1) SC66 Led brd. (GEN.2) SC83 Led brd.		111557438P1 111558402P1
3	Reflector Light Bar Housing (bulk 5)		252010037P
4	Control Board Harness (bulk 2)		252074012P
5	Lower Housing		252025318P
6	Screws (bulk 4)		252045017P

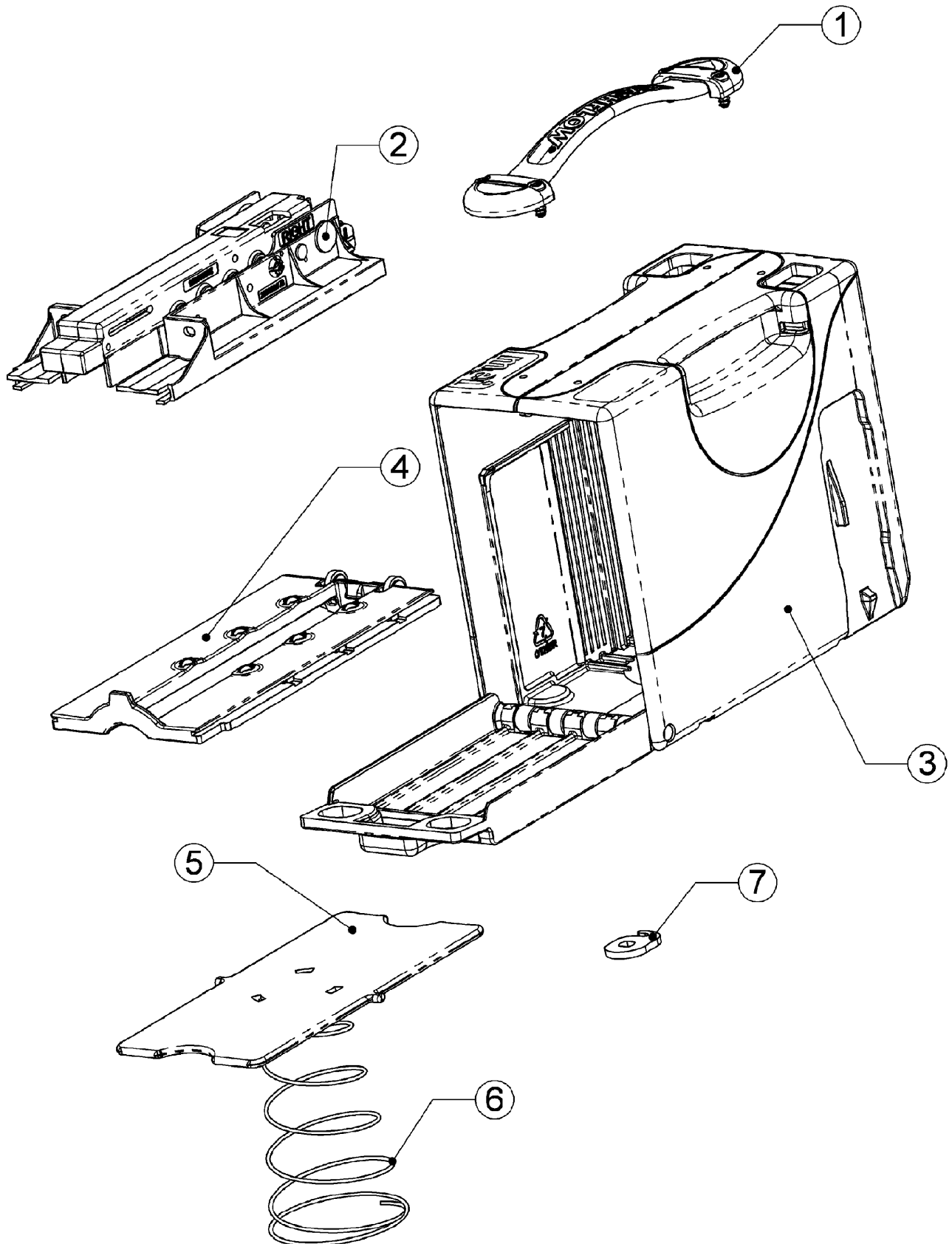
Lower Acceptor Assembly



Cashbox Assembly

Ref Num	Description	IGT Part Number	Part Number
1	Cashbox Handle Kit		252062003P
2	Stacker Base Assy		252063077
3	Side & Door Assembly of Cashbox		252015004P
4	Aperture Plate Assembly (bulk 5)		252011006P
5	Pressure Plate (bulk 20)		252021038P
6	Conical Spring (bulk15)		252035063P
7	Hasp (bulk50)		252035002P

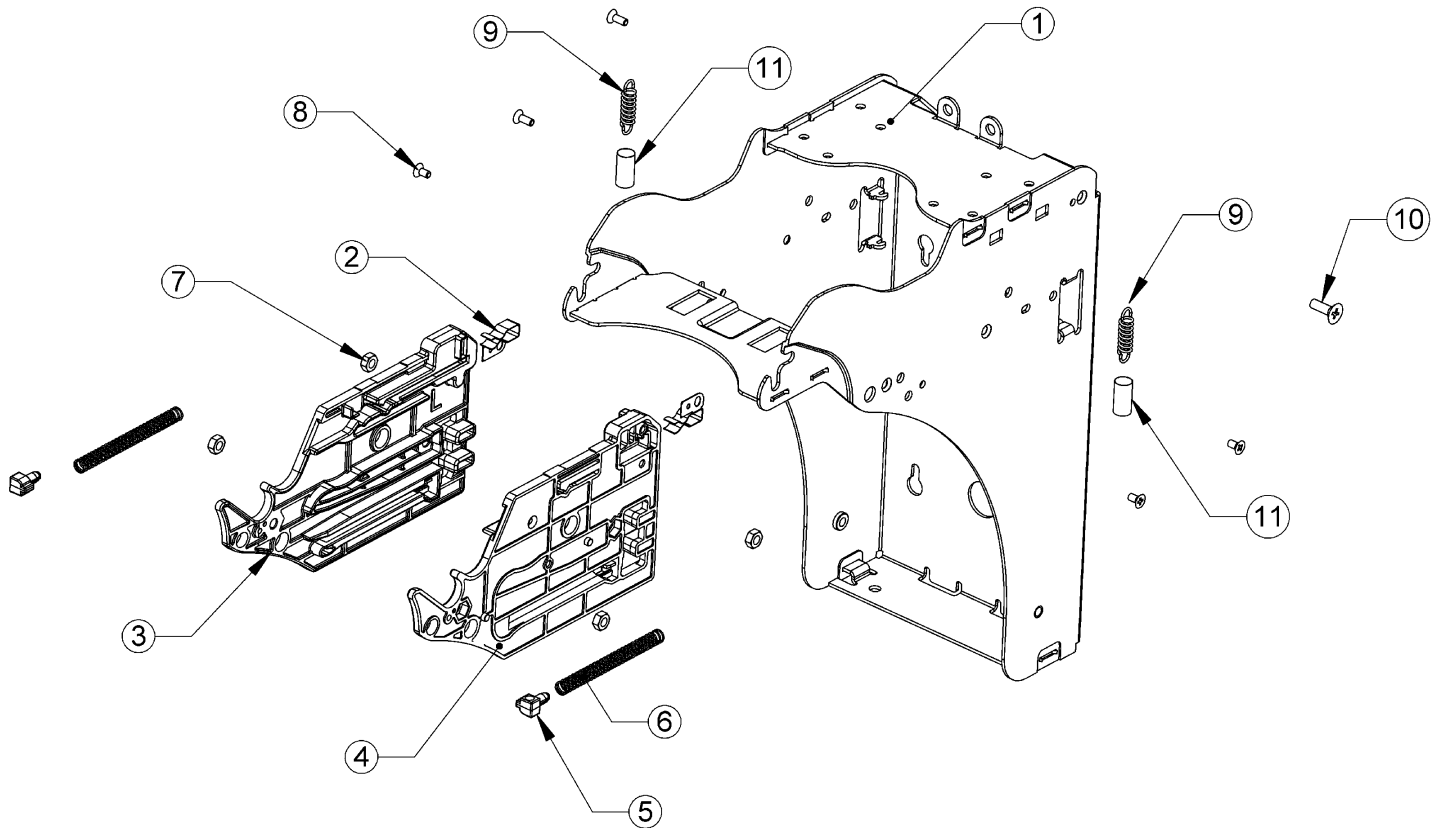
Cashbox Assembly



Chassis Assembly

Ref Num	Description	IGT Part Number	Part Number
1	Assy. Chassis		252018094P1
2	Clip, Earthing Left (bulk100)		252031004P
3	Rail Left (bulk 25)		252023250P
4	Rail, Right (bulk25)		252028249P
5	Guide, Spring (bulk 100)		252021099P
6	Spring, Cassette Reject (bulk100)		252045012P
7	Hex Nut, Style1, M4X0.7 (bulk100)		252041019P
8	Screw, 4-20X6L, FH, Pozi (bulk100)		252046020P
9	Spring, Chassis Ext (bulk 100)		252040040P
10	Screw, 4-20X13L, FH, Pozi (bulk 100)		252043030P
11	Sleeve, Cassette Latch (bulk 50)		252024268P

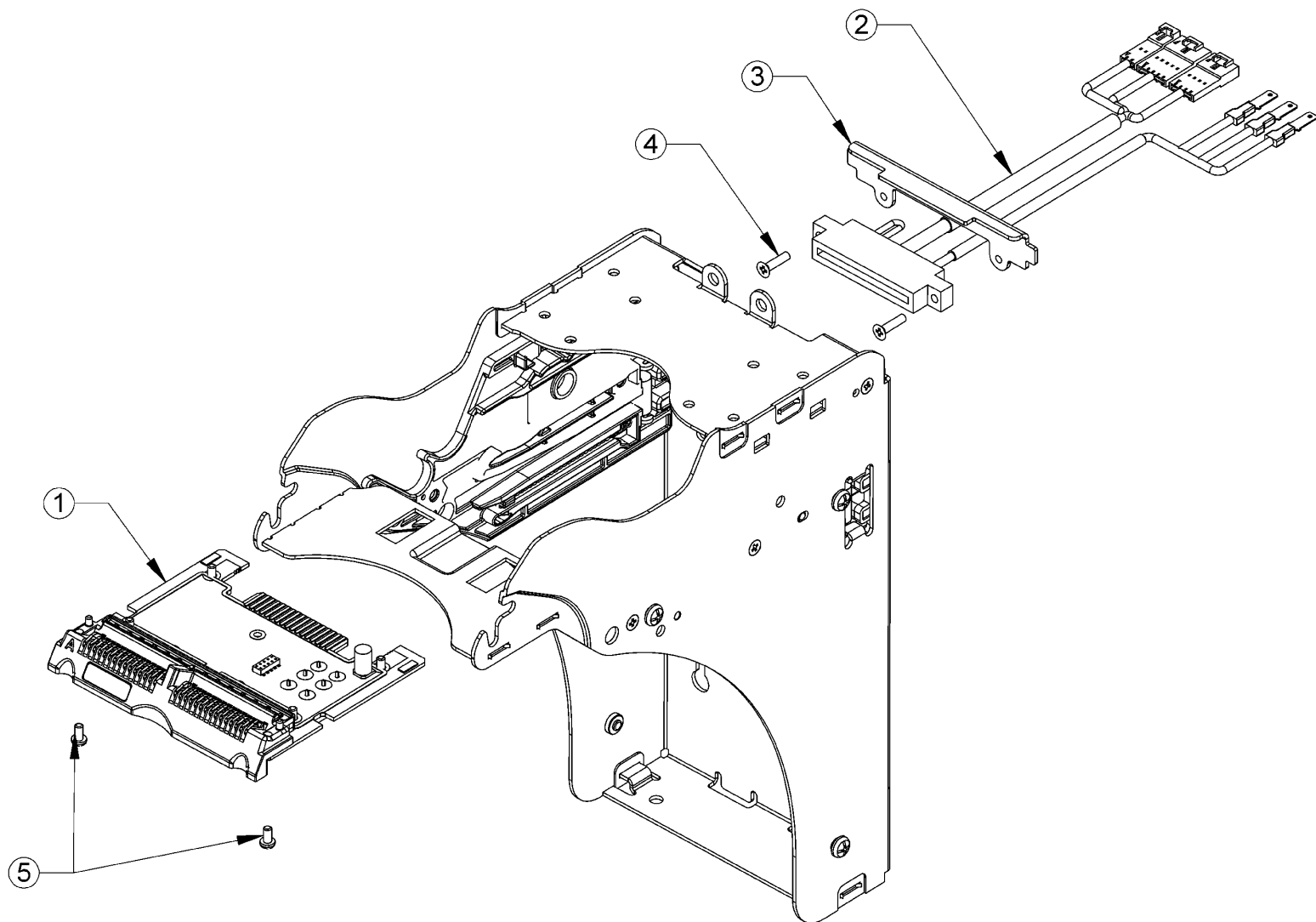
Chassis Assembly



IGT Specific Interface Board & Connector

Ref	Description	IGT Part Number	Part Number
1	Gen. 2 IGT Specific Interface Board SC66/8302 Gen. 1 IGT Specific Interface Board Interface brd. Components <ul style="list-style-type: none"> • Choke 40 ohms (bulk 50) • Crystal, 11.0592 MHZ (bulk 50) • Cassette present switch (bulk 50) 	76913190	252021089P1 252019041P 214662004P 201781003P 214791027P
2	IGT Harness –black – (bulk 5)		252074017P
3	Mounting Plate, Edge Card Connector (bulk25)		252030030P
4	Screws (pak100)		252041031P
5	Screws, Control Board (bulk100)		252041036P

IGT Interface Board & Harness



IGT 67mm LXS Bill Entry Guide

Ref Num	Description	IGT Part Number	Part Number
1	BEG, IGT LXS Slant Top		See Pg. 3
2	Gasket Die Cut (bulk 5)		252029296P
3	Cable, Acceptor to LXS BEG (bulk 5)		252076016P
4	Jumper, LXS Machine to SC66 (bulk 5)		251073034P

IGT 67mm LXS Bill Entry Guide

