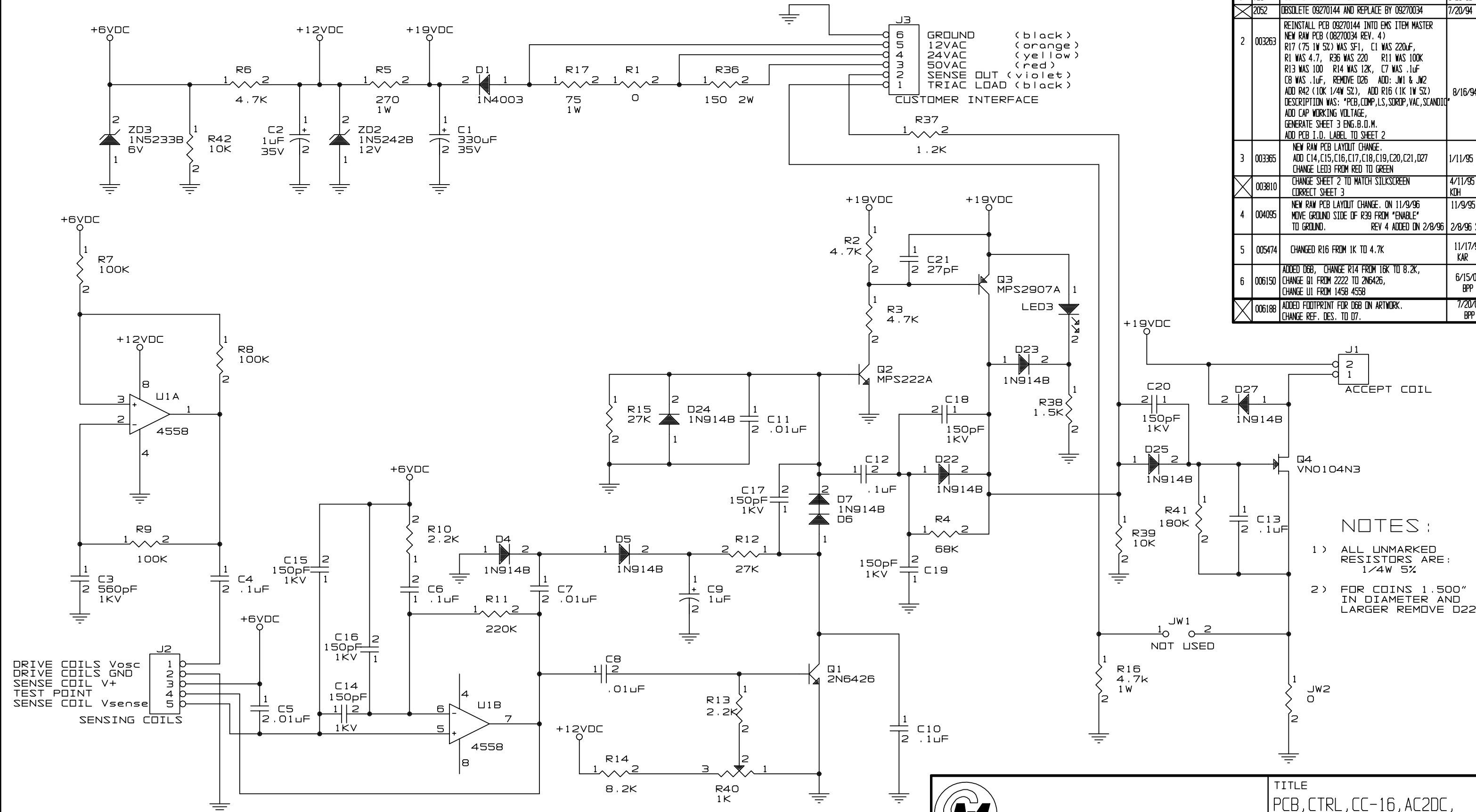



NO.	ECO NO.	REVISIONS	DATE/BY
0		NEW RELEASE	7/21/92 KDH
1	729	ADD R42 - 10K 1/4W 5%	5/25/93 SS
2	2052	OBsolete 09270144 AND REPLACE BY 09270034	7/20/94 SS
3	003263	REINSTALL PCB 09270144 INTO EMS ITEM MASTER NEW RAW PCB (08270034 REV. 4) R17 (75 1W 5%) WAS SF1, C1 WAS 220uF, R1 WAS 4.7, R36 WAS 220 R11 WAS 100K R13 WAS 100 R14 WAS 12K, C7 WAS .1uF C8 WAS .1uF, REMOVE D26 ADD: JW1 & JW2 ADD R42 (10K 1/4W 5%), ADD R16 (1K 1W 5%) DESCRIPTION WAS: *PCB,COMP,LS,SOROP,VAC,SCANDIG* ADD CAP WORKING VOLTAGE, GENERATE SHEET 3 ENG.B.O.M. ADD PCB I.D. LABEL TO SHEET 2	8/16/94 SS
4	003365	NEW RAW PCB LAYOUT CHANGE. ADD C14,C15,C16,C17,C18,C19,C20,C21,D27 CHANGE LED3 FROM RED TO GREEN	1/11/95 KDH
5	003810	CHANGE SHEET 2 TO MATCH SILKSCREEN CORRECT SHEET 3	4/11/95 KDH
6	004095	NEW RAW PCB LAYOUT CHANGE. ON 11/9/96 MOVE GROUND SIDE OF R39 FROM "ENABLE" TO GROUND. REV 4 ADDED ON 2/8/96	11/9/95 KDH 2/8/96 SS
7	005474	CHANGED R16 FROM 1K TO 4.7K	11/17/98 KAR
8	006150	ADDED D6B, CHANGE R14 FROM 16K TO 8.2K, CHANGE Q1 FROM 2222 TO 2N6426, CHANGE U1 FROM 1458 4558	6/15/00 BPP
9	006188	ADDED FOOTPRINT FOR D6B ON ARTWORK. CHANGE REF. DES. TO D7.	7/20/00 BPP

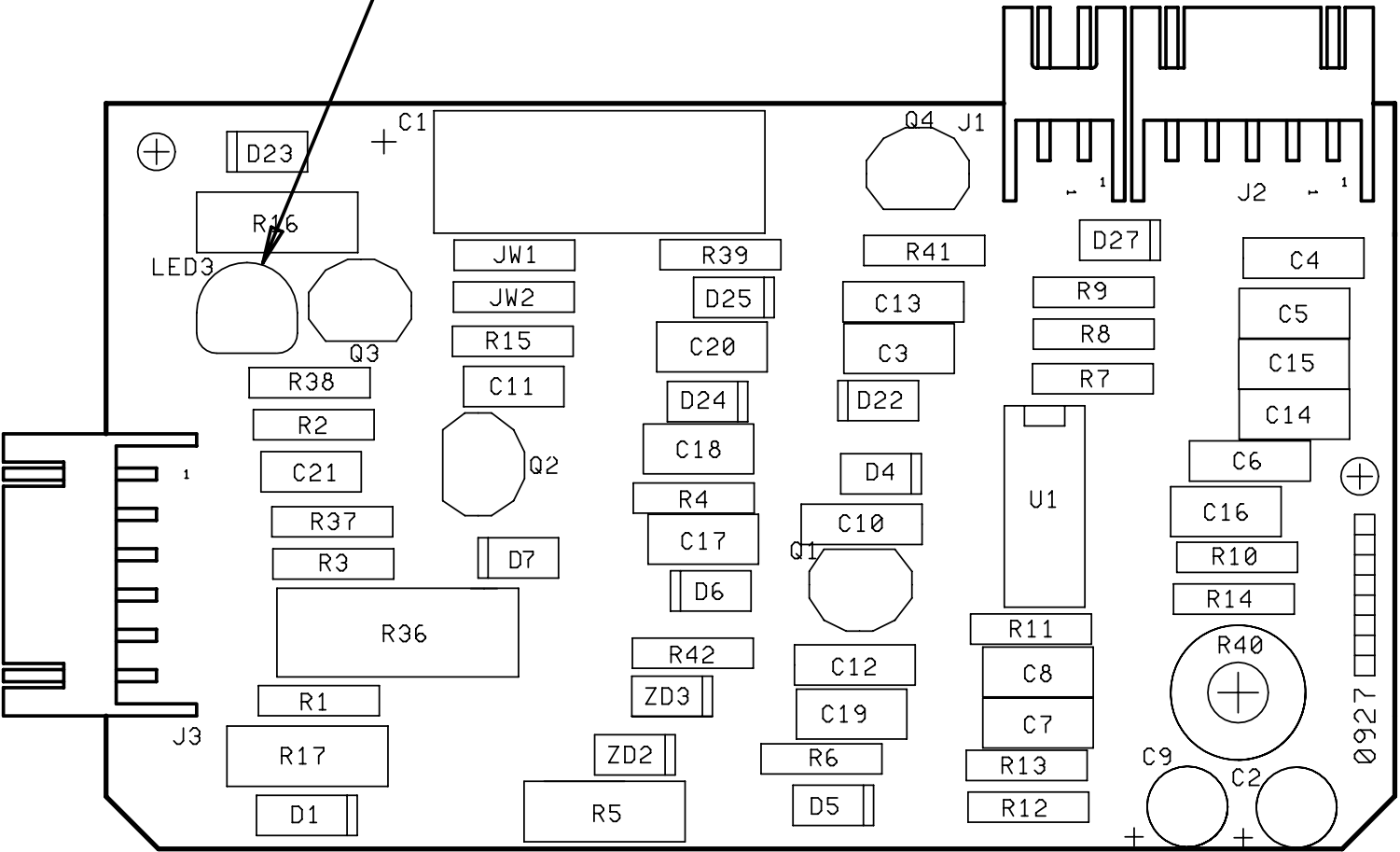
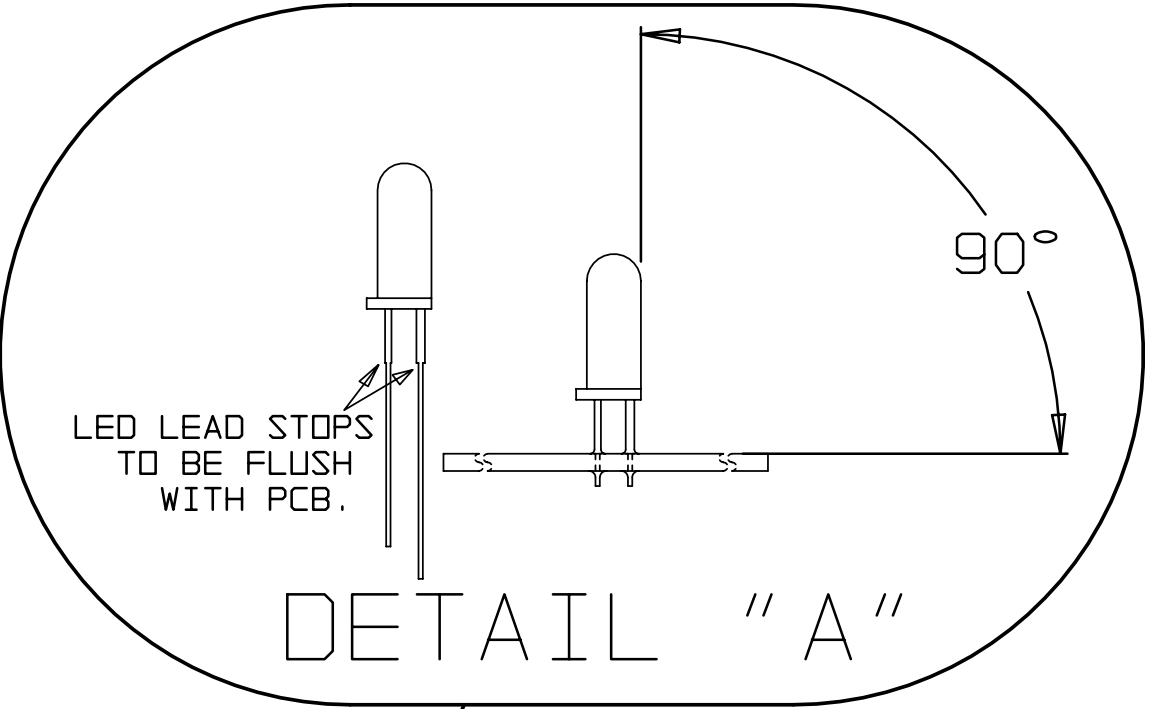


- NOTES:
- 1) ALL UNMARKED RESISTORS ARE: 1/4W 5%
  - 2) FOR COINS 1.500" IN DIAMETER AND LARGER REMOVE D22

 <b>COIN MECHANISMS INC.</b> 400 REGENCY DR. GLENDALE HGTS, IL		TITLE	
		PCB, CTRL, CC-16, AC2DC, S12MS, NOI, SC, NCTL	
DRAWN	BPP	DATE	6/15/00
CHKD		DATE	
APP		DATE	
DWG NO. 09270144			REV 6
SIZE B SCALE 1"=1"		COMP NO. G:\ELEC\DWG	SHT 1 of 3

This drawing is the property of and contains proprietary information of Coin Mechanisms, Inc. The drawing shall be returned upon request and is not to be copied or disclosed without written authorization and will not be used in any way detrimental to the interest of Coin Mechanisms, Inc.

NO.	ECO NO.	REVISIONS	DATE/BY
6188		SEE SHEET 1	7/20/00 BPP



NOTES:

1. REFER TO SCHEMATIC DIAGRAM AND PARTS LIST FOR REFERENCE DESIGNATIONS AND COMPONENT VALUES
2. MAXIMUM HEIGHT FOR ANY COMPONENT TO BE .35" EXCEPT FOR LED3.
3. MAXIMUM COMPONENT LEAD PROJECTION TO BE .085".
4. SOLDERING SHALL BE IN ACCORDANCE WITH IPC-S-815.
5. ASSEMBLIES TO BE CLEANED OF FLUX AND OTHER CONTAMINANTS AFTER SOLDERING.
6. LED3 TO BE VERTICAL TO PCB DURING SOLDERING PROCESS (SEE DETAIL A).
7. CONNECTORS TO BE FLUSH TO PCB DURING SOLDERING PROCESS.



COIN MECHANISMS INC.  
400 REGENCY DR.  
GLENDALE HGTS, IL

This drawing is the property of and contains proprietary information of Coin Mechanisms, Inc. The drawing shall be returned upon request and is not to be copied or disclosed without written authorization and will not be used in any way detrimental to the interest of Coin Mechanisms, Inc.

TITLE  
PCB, CTRL, CC-16, AC2DC,  
S12MS, NOI, SC, NCTL

DRAWN BPP DATE 6/15/00

CHKD DATE

APP DATE

DWG NO. 09270144

REV 6

SIZE B SCALE 1"=1 COMP NO. G:\ELEC\DWG SHT 2 OF 3