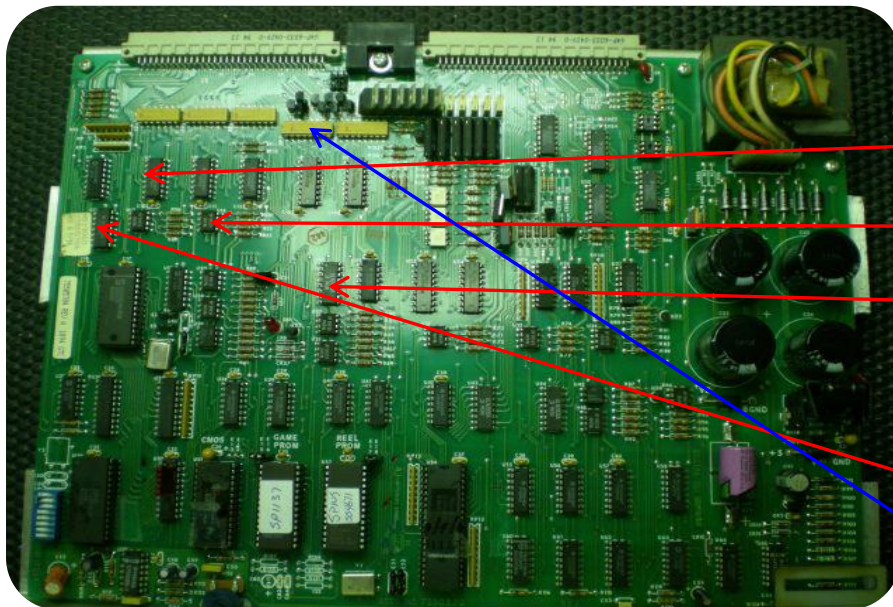


Constant Door Open State

possible;

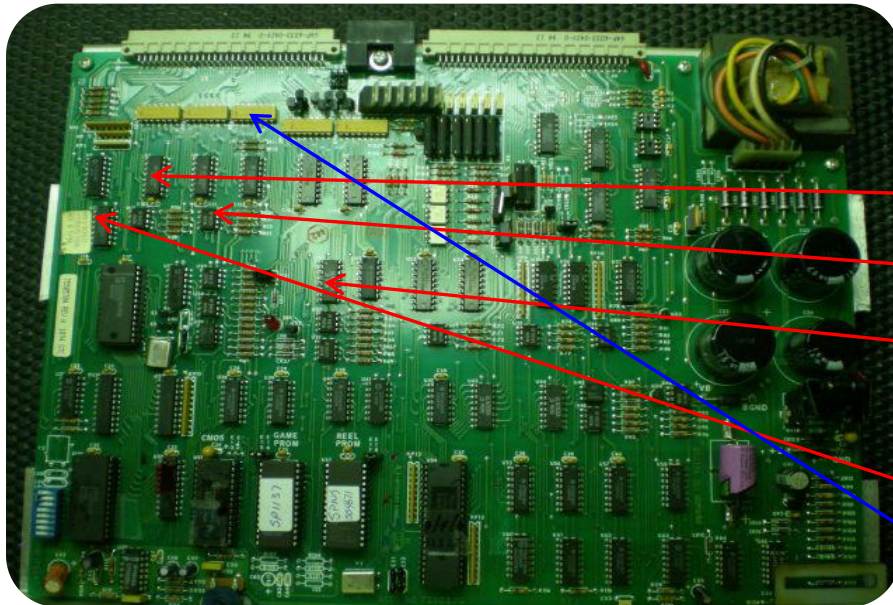
- U5 S/REG.R 8 stage 4021
- U14 opto coupler DARL 6N139
- U21 driver DARL ULN2003
- U12 inverter 4584
- RP4 res. Network
1M-1K6



Coin In Time Out

possible;

- U5 S/REG.R 8 stage 4021
- U14 opto coupler DARL 6N139
- U21 driver DARL ULN2003
- U12 inverter 4584
- RP5 res. Network
1M-1K6



Hopper Optic not sensing
coin out

possible;

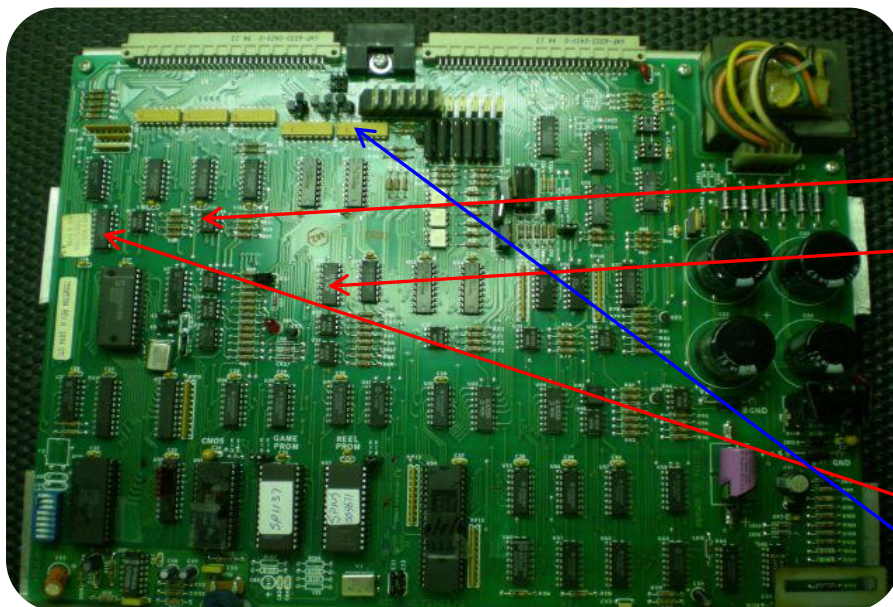
U5 S/REG.R 8 stage 4021

U14 opto coupler DARL 6N139

U21 driver DARL ULN2003

U12 inverter 4584

RP4 res. Network
1M-1K6



Hopper Probe non functional

possible;

U14 opto coupler DARL 6N139

U21 driver DARL ULN2003

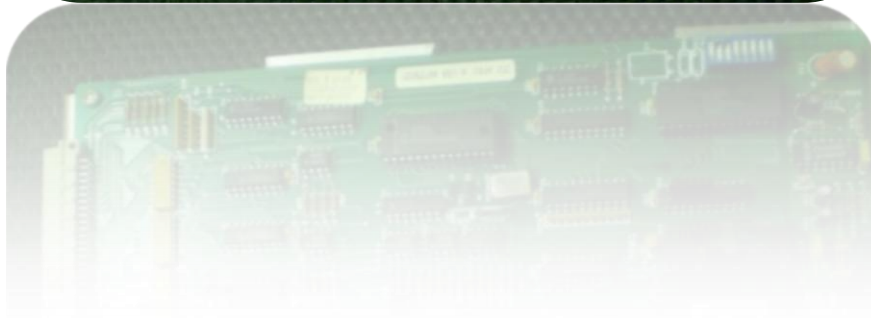
U12 inverter 4584

RP6 res. Network
1M-1K6



Lamps 6.3v

- Coin Accept Lamp Q4
- Insert Coin Lamp Q5
- Max Bet Lamp Q1
- Cash Out Q2
- Spin Reels Q7
- Play Credits Q8





Hard Meters

- Coin In Meter K2
- Coin Out Meter K1
- Jackpot Meter K6
- Coin Drop Meter K3
- Bills Accept K4

