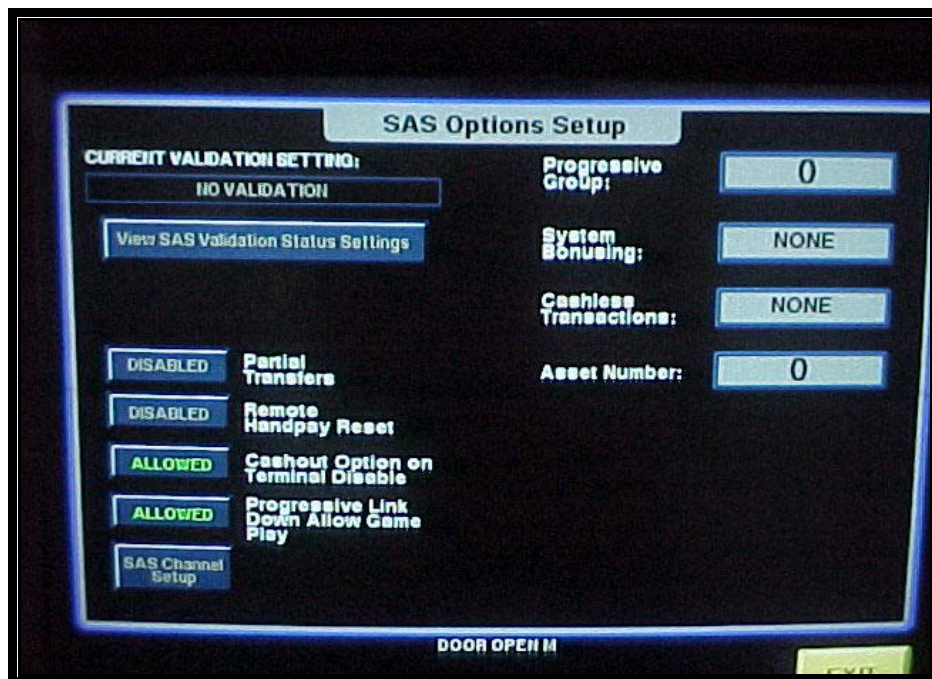


IGT SAS

Notes: Some of these options need to be key chipped to be changed.



Current Validation Setting NOTE: This option is only used for EZ Pay operation

View SAS Validation Status Settings NOTE: This option is only used for EZ Pay operation

Partial Transfers

To allow partial transfers.

Remote Handpay Reset

This allows the operator to remotely reset the terminal from the SAS host after a hand pay condition.

Cashout Option On Terminal Disable

This lets the operator determine whether the player can cash out if the terminal is disabled when communication with SAS is interrupted. Options are ALLOWED, NOT ALLOWED, and FORCED. If set to ALLOWED, a cash-out button appears when communications are interrupted, allowing the player to cash out from the machine. If set to NOT ALLOWED, the player cannot cash out. If this option is set to FORCED, the machine automatically cashes out.

Progressive Link Down Allow Game Play

If enabled, the operator can set the terminal so game play continues if the progressive link is interrupted.