

## Atronic e-motion™ Installation Manual



# 1. Release Info

Atronic e-motion™  
**Installation Manual**

Rev. 2.3

October 2008

## **WARNING!**

The e-motion™ / Hi(!)bility™ manual is intended to provide QUALIFIED TECHNICAL PERSONNEL ONLY with the information necessary to routinely maintain, service, and repair the Atronic e-motion cabinet and components. To avoid personal injury or damage to the equipment, do not perform any serviceing other than that contained in this manual.

## **Copyright Notice:**

© 2003 - 2008, Atronic. All rights reserved.

No part of this publication may be copied or distributed, transmitted, transcribed, stored in a retrieval system, or translated into any human or computer language, in any form or by any means, electronic, mechanical, magnetic, manual, or otherwise, or disclosed to third parties without the express written permission obtained from a properly authorized official of Atronic.

## **DISCLAIMER**

Atronic makes no representation or warranties, express or implied, with respect to this publication, or any product of Atronic, including but not limited to warranties of merchantability or fitness for any particular purpose. Atronic reserves the right to make changes, enhancements, revisions and alterations of any kind to this publication or the product(s) it covers without obligation to notify any person, institution or organization of such changes, enhancements, revisions and alterations.

## **TRADEMARKS**

This document may contain trademarks of Atronic. All other brand and product names are trademarks or registered trademarks of their respective companies.

# Table of Contents

<b>1. Release Info .....</b>	<b>2</b>
<b>2. About this Manual .....</b>	<b>4</b>
2.1 Scope.....	4
2.2 Target Audience.....	4
2.3 Included Software Releases .....	4
2.4 Related Publications .....	5
<b>3. Safety Instructions .....</b>	<b>6</b>
<b>4. Machine Components.....</b>	<b>8</b>
4.1 Closed Cabinet.....	8
4.2 Opened Cabinet .....	9
4.3 Logic Box.....	10
<b>5. Dimensions .....</b>	<b>11</b>
<b>6. Technical Data .....</b>	<b>12</b>
<b>7. Machine Installation .....</b>	<b>13</b>
7.1 Overview.....	13
7.2 Machine Mounting.....	14
7.3 Replace Shipping Locks.....	15
7.4 Prepare Coin Acceptor (CC-16 / MC-16) .....	16
7.5 Prepare Hopper .....	16
7.6 Check cables and connectors.....	16
7.7 Check Commboard Settings.....	16
7.8 Apply Power .....	17
<b>8. Basic Setup.....</b>	<b>18</b>
<b>9. Tests.....</b>	<b>19</b>
9.1 Test Bill and Coin Handling.....	19
<b>10. Technical Support Telephone numbers.....</b>	<b>20</b>
<b>11. Drilling Template.....</b>	<b>21</b>

## 2. About this Manual

### 2.1 Scope

This Installation Manual describes how to install an Atronic e-motion™ gaming machines.

It describes how to mount the machine to a base stand and relevant procedures to be carried out before the machine can be put into operation. Further it contains important safety instructions, technical data and cabinet drawings.

### 2.2 Target Audience

We address qualified technical personnel, who are involved in installation, setup and configuration of Atronic gaming machines. With this user group we assume that they are basically familiar with gaming machines and casino related terminology.

Please read this document and the contained safety notes carefully before you start machine installation.

### 2.3 Included Software Releases

The installation procedures described in this manual do not relate to a certain software version. However the graphs included are taken from a C-Level software releases (C5.1.x.x). Other software version may support different features and options.

## 2.4 Related Publications

More detailed information about Atronic e-motion™ gaming machines may be found in the following publications:

### Software Manuals

- Manual HI Software (B1.2.x STD)
- Manual HI Software (C4.x.x.x STD)
- Manual HI Software (C5.x.x.x STD)

### Operation Manuals

- Manual EMC HI Operating (B1.2.x STD)
- Manual EMC HI Operating (C4.x.x.x STD)
- Manual EMC HI Operating (C5.x.x.x STD)

### Spare Parts

- Manual EMC Parts Catalogue

### Linked Gaming Products

- Manual [ product ] - Setup and Configuration

for a particular linked gaming product, such as CASH FEVER™, King Kong Cash, The Game of Life™, Mystery Magic™, Hot Link™, etc.

### Peripherals

(Coin- and bill acceptors, hopper, printer, etc.)

See folder "Peripherals" on the Atronic Service Manual CD.

**Note:** All mentioned manuals can be found on a CD-ROM titled "Atronic Service Manual 2008" or [www.atronic.com](http://www.atronic.com)\*

*If this manual did not come with this CD-ROM, please ask Atronic Technical Service for a free copy of the latest revision.*

\* to gain access an active Gamebook account is necessary.



## 3. Safety Instructions

### Note!

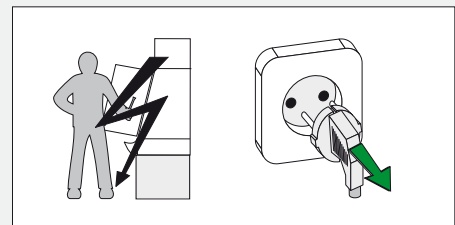
This installation module of the e-motion™ Hi(!)bility includes only information relating to the installation of the e-motion™ cabinet. For other machine or cabinet types please refer to the relevant manuals.



**Follow the safety instructions below and on the next page, to ensure safe operation.**

### Caution! High Voltage

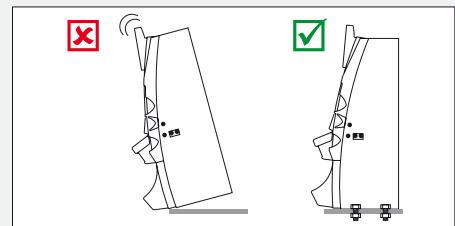
Power cable must be disconnected from the main power socket, so that the machine is free from electrical current. The power switch is intended for service purposes only.



### Caution! Tipping Hazard

The machine **must** be fastened to an appropriate base, to prevent tipping over. Use the Atronic Installation Station (AIS) for machine mounting.

-> see also section 7 [Machine Installation](#)



### Caution! Moving Parts

Make sure to disconnect the hopper, when working on it.

### Caution! Machine Cleaning

The machine must not be cleaned using a high pressure cleaner or a vapor jet and must not be installed or operated in areas where high pressure cleaners or vapor jets are used. Use in dry conditions only.

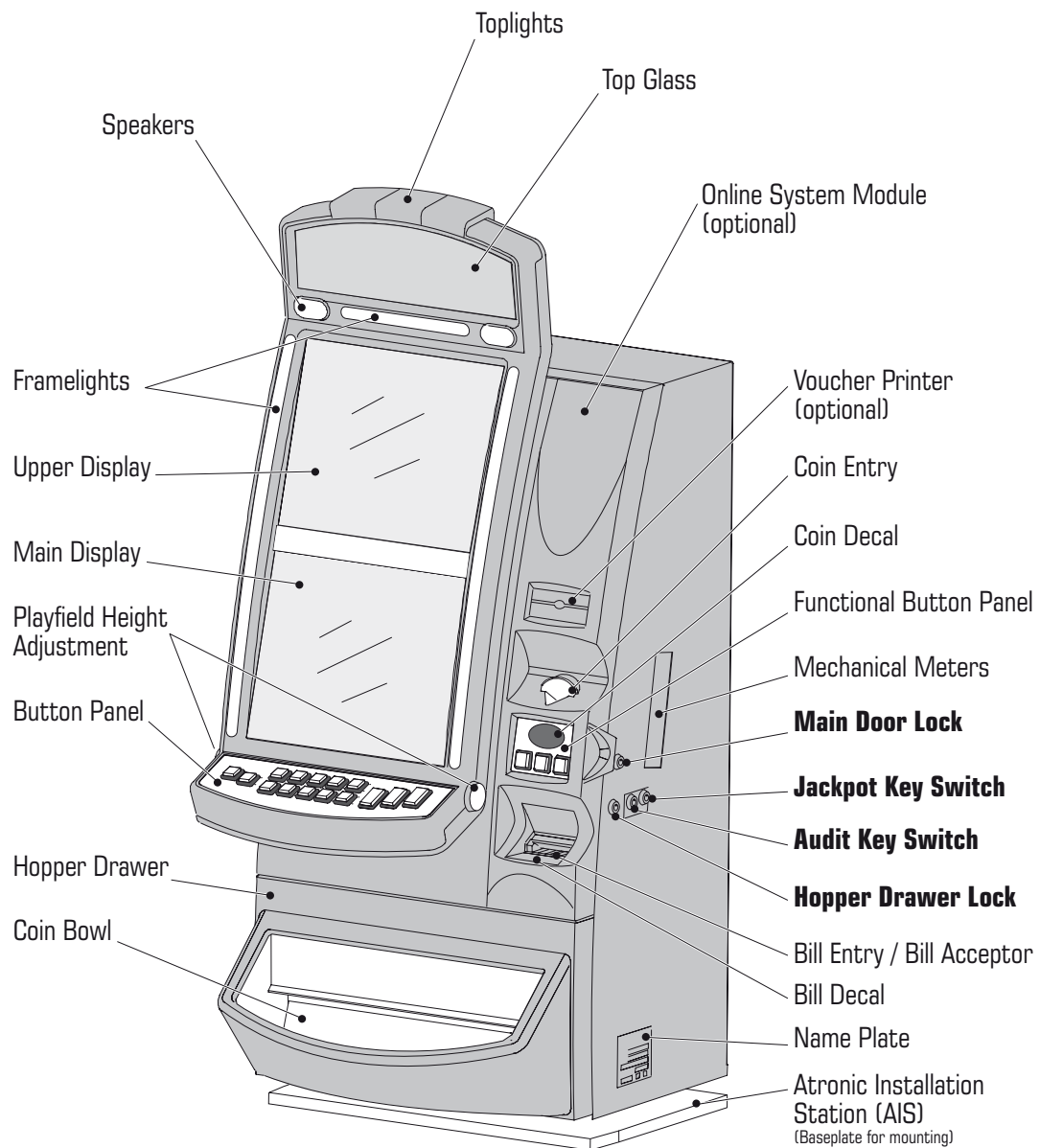
Continues on next page

**Further safety precautions during Installation, Service and Maintenance**

- The machine weight is approx. 120kg. Always use appropriate equipment for transportation.
- Disconnect the power cable from the socket, before working at the machine.
- The machine may only be operated in **dry conditions** and must be connected to a **grounded mains power socket**.
- Check that all connectors are seated correctly. False connections can cause irreparable damage, not covered by warranty.
- For power cable routing remove the knock-out plate on the appropriate side of the cabinet. Edge-protection must be mounted once the knock-out plate has been removed.
- Only qualified service personnel should perform repairs.
- Electronic assemblies should only be changed with the power switched off.
- Use only original Atronic parts for replacement.
- Atronic commboard and mainboard  
Danger of explosion if battery is incorrectly replaced!  
Check for correct polarity and replace with the same or equivalent type only!
- The machine must not be cleaned using a high pressure cleaner or a vapor jet and must not be installed or operated in areas where high pressure cleaners or vapor jets are used. Use in dry conditions only.
- Please refer to relevant Atronic service manuals for further instructions on setup, operation and maintenance.

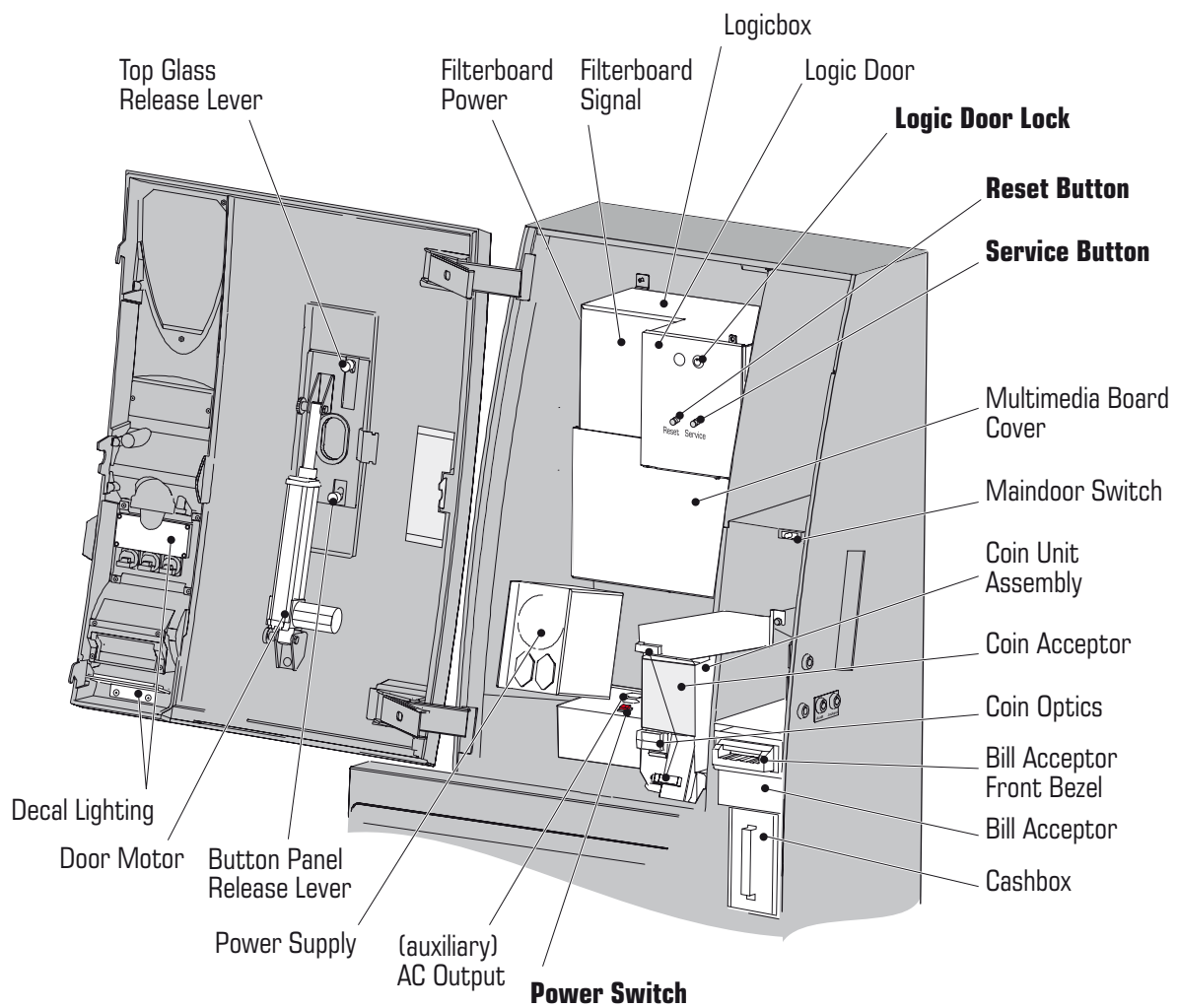
## 4. Machine Components

### 4.1 Closed Cabinet

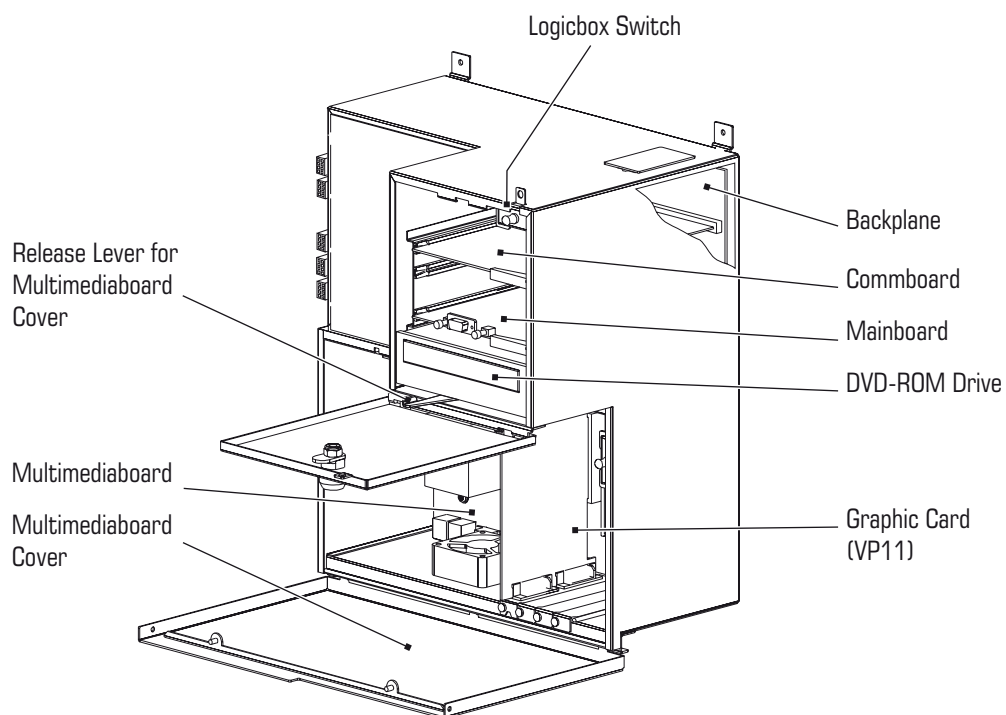




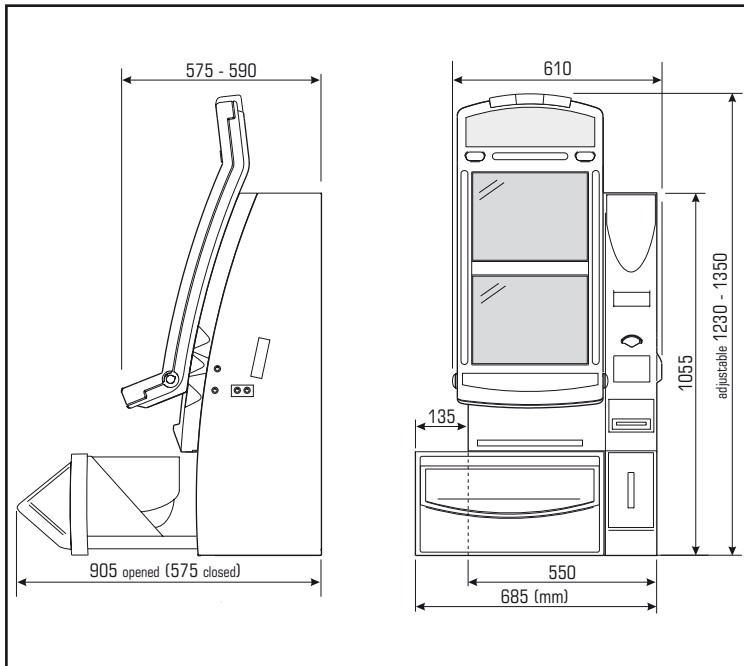
## 4.2 Opened Cabinet



### 4.3 Logic Box



## 5. Dimensions



### e-motion™ Cabinet

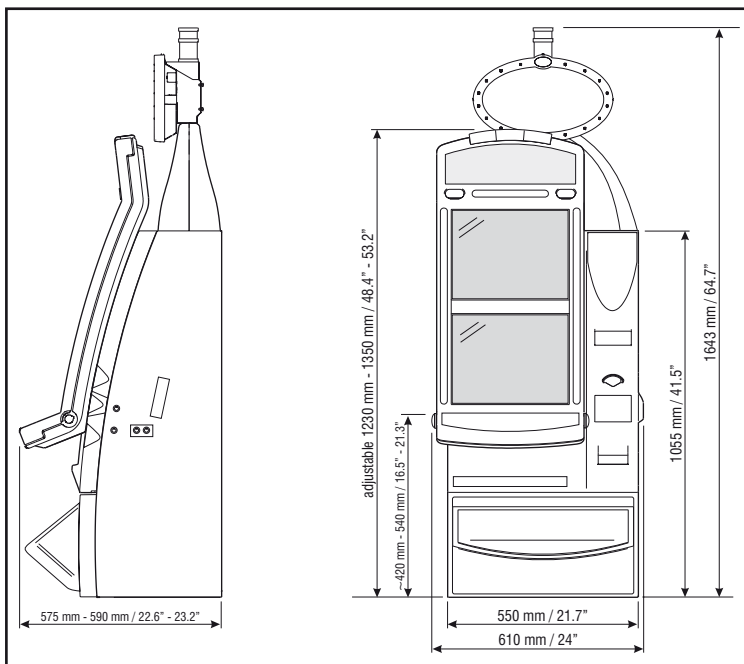
**Weight:** approx. 120 Kg / 264 lbs.

#### Overall dimensions closed cabinet

**Height:** max. 1350 mm / 53.2"

**Width:** 610 mm / 24"

**Depth:** max. 590 mm / 23.2"



### e-motion™ Cabinet with Topper

**Weight:** approx. 129 Kg / 284 lbs.

#### Overall dimensions closed cabinet

**Height:** max. 1643 mm / 64.7"

**Width:** 610 mm / 24"

**Depth:** max. 590 mm / 23.2"

## 6. Technical Data

### Electrical Specifications

Required Voltage: 100V to 240V AC  
50Hz / 60Hz

Primary Voltage  
(The power supply features voltage autoswitching)

The mains power cable must be plugged into a earthed power outlet labeled 8 Amps.

### Power Consumption

Idle Mode: approx. 200W  
1.8 A / 115V, 0.9 A / 230V  
Payout Mode: approx. 300W  
2.6 A / 115V, 1.3 A / 230V

### Power Supply

Secondary Voltage: + 24V / 4A  
+ 12V / 12A  
- 12V / 0.3A  
+ 5V / 11A  
+ 3.3V / 7A

Secondary Voltage

### Fuses

Power Supply: T 8A / 250V  
Filterboard F2: +12V T 6.3A / 250V (UL fuse)  
Filterboard F3: +24V T 4A / 250V (UL fuse)

Primary Fuses

Secondary Fuse

### Lamps

Fluorescent Lamp TL8W/33  
300mm, 410 lumen,  
4100K (cool white)  
Button Lighting LED 12V

Lamps

### Environmental specifications

Operating Temperature: 0°C - 45°C (32°F - 113°F)  
Operating Humidity: 0% - 85% (non condensing)  
(same limits for storage)

Suggested Limits

## 7. Machine Installation

### 7.1 Overview

This section should only be carried out by **Qualified Technical Service Personnel**.

Review the list below and perform as needed. Explanations are located on the following pages and in additional manuals.

- ☐ Inspect the machines for transport damage. Any transport damage should be noted and witnessed by the freight forwarder. The manufacturer accepts no responsibility for transport damage.
- ☐ Check the machines for correct software and hardware configuration. Check that all EPROMs are correctly seated on the boards.
- ☐ Prepare the machine bases by drilling the mounting holes. Use the Atronic drilling template for proper mounting hole placement.
- ☐ Place and mount the machine to the base, using the Atronic Installation Station (AIS). The power cable must be inside the cabinet.
- ☐ Replace shipping locks with casino specific locks.
- ☐ Install and connect accounting system components.
- ☐ Check that all internal and external connections are seated correctly.
- ☐ Prepare coin acceptor and hopper.
- ☐ Apply power to the machine.
- ☐ Load paper into the Printer.
- ☐ Execute basic machine setup (Initial Setup)
- ☐ Configure game.
- ☐ Test bill and coin handling.

**Note:** Depending on machine configuration or jurisdictional requirements, additional tasks may have to be carried out before the machine can be put into operation (e.g. acceptance inspection, logicbox sealing, etc.).



## 7.2 Machine Mounting

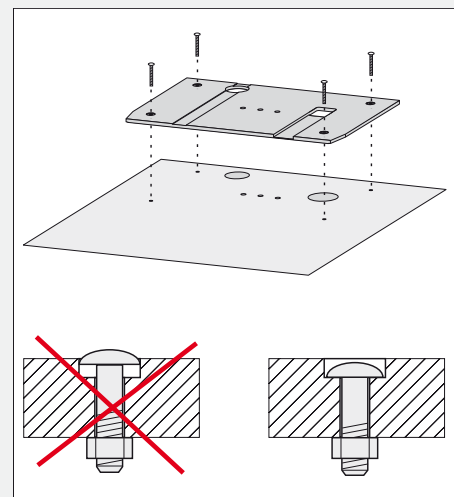
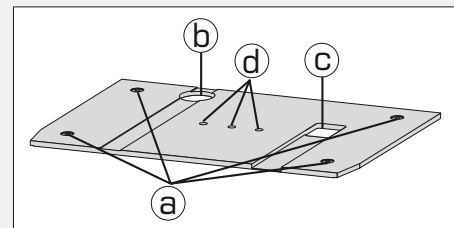
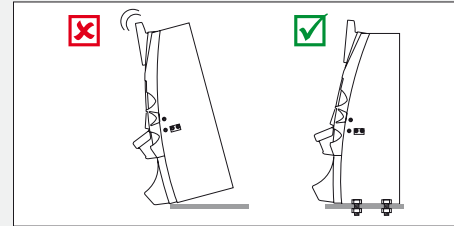


### **Caution! Tipping Hazard**

**Do not operate the machine unless it has been properly secured with an Atronic Installation Station (AIS). The machine can tip over, if it is not properly mounted.**

1. Use the Atronic Installation Station (AIS), supplied by Atronic, to mark the holes on the base before drilling. Make sure to leave min. 180mm (7.1") distance to the next machine or a wall on both sides of the cabinet.  
If no AIS is at hand, use the [drilling template](#) on page 21.
2. Drill four holes 10mm (3/8") for the AIS mounting (drillings a) and one out of three holes 10mm (3/8") for the machine securing bolt (drillings d) into the base. It is not important which of the 3 holes for the securing bolt is used, if at least one securing bolt is mounted. If the base stand has braces or struttings placed below one mounting hole, simply use another one.
3. Drill or cut out one 55mm (2 1/4") hole for running the main cable into the base (drilling b).
4. Cut out the 60 x 50 mm (3 1/4") recess for coin drop into the base stand (recess c)
5. Secure the AIS to the base using 4 mounting bolts (delivered with the machine) and fasten with wingnuts and washer.

Make sure that the boltheads are completely lowered into the counterbores.



6. Make sure that the mains power cable is completely inside the machine and that hopper drawer and maindoor are closed and locked.

Two forceful persons (one on each side) should lift the machine and then slide it onto the AIS. The baseplate of the machine will grasp into the guides of the AIS. If available, use a lift truck.



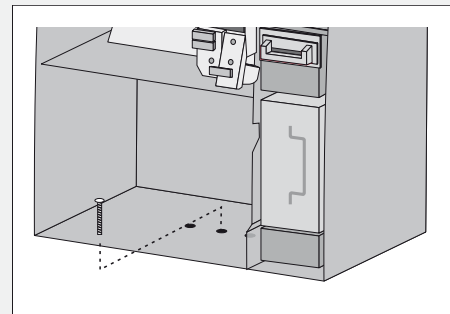
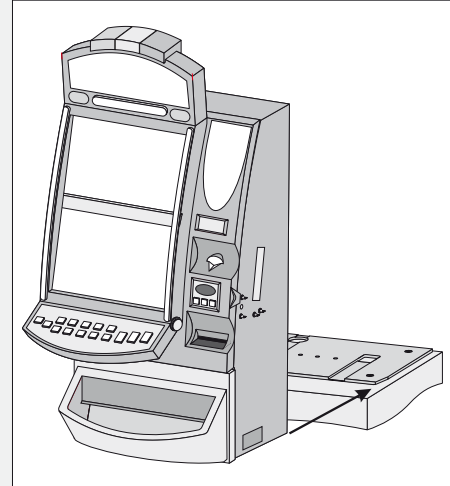
**Caution!**  
**The machine weighs 120 kg (264 lbs)!**



**Important:** Make sure that the main power cable is completely inside the cabinet and not threaded through the AC hole, before sliding the machine onto the AIS! Otherwise the cable will be damaged!

7. Use at least one securing bolt (delivered with the machine) to secure the machine to the AIS and the base stand. Fix the bolt with wingnut and washer.

It is not important which of the 3 holes is used, if at least one securing bolt is mounted. If the base stand has braces or struttings placed below one mounting hole, simply use another one.



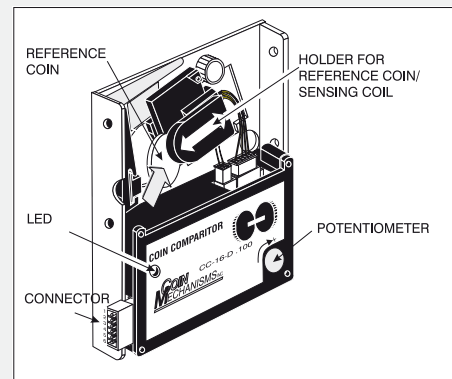
### 7.3 Replace Shipping Locks

If not ordered otherwise, Atronic machines are equipped with shipping locks for easy commissioning. These locks have to be replaced by casino specific locks to provide appropriate security.

## 7.4 Prepare Coin Acceptor (CC-16 / MC-16)

- Slide holder for reference coin rightwards, remove (plastic) transport chip and replace it with appropriate reference coin.
- Check reference coin for proper (parallel) seating.

-> See manuals Peripherals / Coin Acceptor for details.

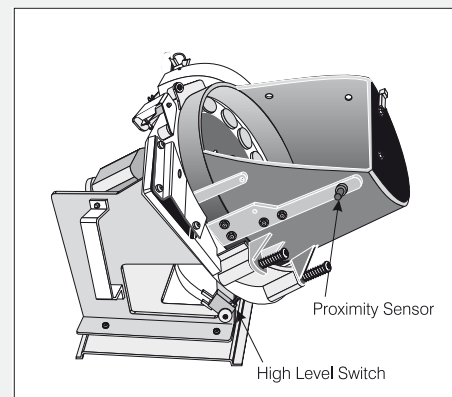


## 7.5 Prepare Hopper

The hopper high level switch detects the filling level of the hopper by the weight of the coins. If the switch is activated, further accepted coins are separated to the drop box. The switching threshold can be altered with an adjustment screw.

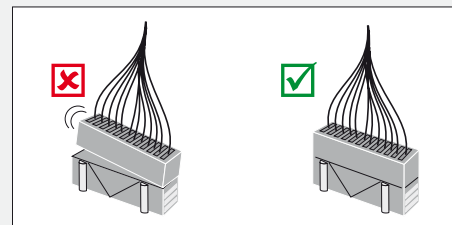
- Fill the hopper with that amount of coins/tokens at which you want the switch to be activated.
- Adjust switching threshold with the adjustment screw that operates the high level switch.

-> See manuals Peripherals / Hopper for details.



## 7.6 Check cables and connectors

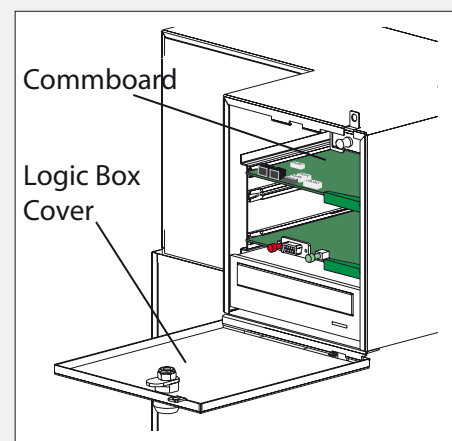
Check that all connectors are seated correctly, prior to first power up. False connections can cause irreparable damage, not covered by warranty.



## 7.7 Check Commboard Settings

The commboard DIP switches and rotary switches configure SAS address, APL address, progressive mode and SAS (dual) channel allocation.

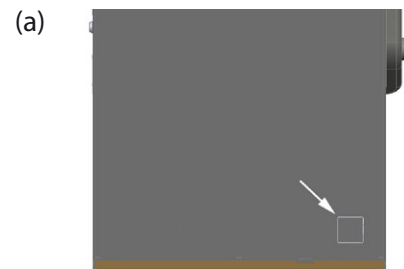
Use the DIP switch tables within manual "Software / Basic Setup" for a particular software version (e.g. C5.1.x) to check or alter the commboard settings. Then connect to the online system components.



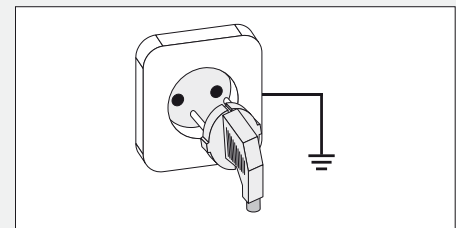


## 7.8 Apply Power

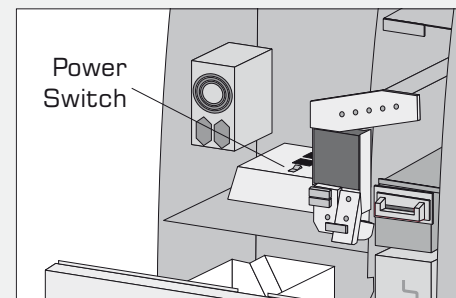
- Punch out one of the perforated knock-out plates in order to provide access for the power cable (figure a).
- Mount the enclosed edge protection (figure b).
- Check that the machine mains cable has not been damaged during transit.



- Check that the supply socket is in good condition and not showing any signs of overheating or damage.
- Connect the power cable to a grounded power outlet, that is rated for min. 3A / 230V at 50 Hz or 6A / 115V at 60 Hz.
- Switch the machine on and check that the machine initializes. The LED's on the masterboard (they indicate correct voltages) should all be lit. The power switch is located at the power supply left to the hopper.



**Note:** The power up cycle will take some minutes, because the machine checks installed hardware and security relevant circuits. To operate the machine while the maindoor is open, pull the maindoor switch (set it to closed position).



**At this point the machine installation is finished. Proceed with Basic Setup (Initial Setup and Service Menu settings).**

Please refer to the software manual for a particular software version for details, e.g. **Manual HI Software (C5.x.x.x STD)**

## 8. Basic Setup

Atronic machines usually come configured as specified during order processing. However it might be necessary to reconfigure basic machine settings, such as denomination, metering, payable, etc. These settings can not be altered during normal operation, as they require a machine re-initialisation for technical or jurisdictional reasons.

**Note:** Please refer to the document “Manual HI Software (version)” relevant for a particular software version (e.g. C5.1.x.x) for detailed information.

1. **Configure the Commboard**

This is necessary only, if you have to alter the commboard settings, such as progressive mode or channel allocation.

2. **Carry out a RAM Reset (incl. Commboard Clear)**

This will clear all machine data, statistics and settings, including progressive jackpot configuration.

3. **Carry out the Initial Setup**

After a RAM Reset the machine automatically enters the Initial Setup menu. The Initial Setup allows to configure all basic machine setting.

4. **Carry out (Progressive) Jackpot Configuration**

A PC or notebook with Atronic's Alink Config software is connected to the gaming machine and uploads the progressive jackpot configuration data.

**Important:** It is necessary to carry out the progressive jackpot configuration directly after the Initial Setup. Do not insert credits before the jackpot configuration data is uploaded.

In an Atronic Progressive Link™ (APL) the jackpot configuration has to be carried out at the APL master machine only. The jackpot configuration data is then transferred to all linked APL slave machines.

5. **Adjust game settings in the Service Menu**

## 9. Tests

### 9.1 Test Bill and Coin Handling

In order to access the Diagnostics menu open maindoor and press the service button at front of the logic box. The **Service Menu** is displayed. Select file tab "**Diagnostics**".

- Check coin channeling optics.  
-> / Coin Handling / Optics Test
- Check coin diverter.  
-> / Coin Handling / Coin Diverter
- Test bill validator acceptance  
-> / Bill Validator / Validator Test without Stacking
- Test hopper payout and switching times  
-> / Hopper / Hopper 1

**Note:** Please refer to the document "Manual HI Software (version)" relevant for a particular software version (e.g. C5.1.x.x) for detailed information.

**Note:** Make sure to have stacker lock keys and the cashbox keys at your hands, when performing a "Validator Test with Stacking".

## 10. Technical Support Telephone numbers

Atronic offers and provides technical support 24 hours a day, 7 days a week.

If technical assistance is required during normal business hours, please contact your local technical services representative at one of the numbers below.

### **Technical Support Locations:**

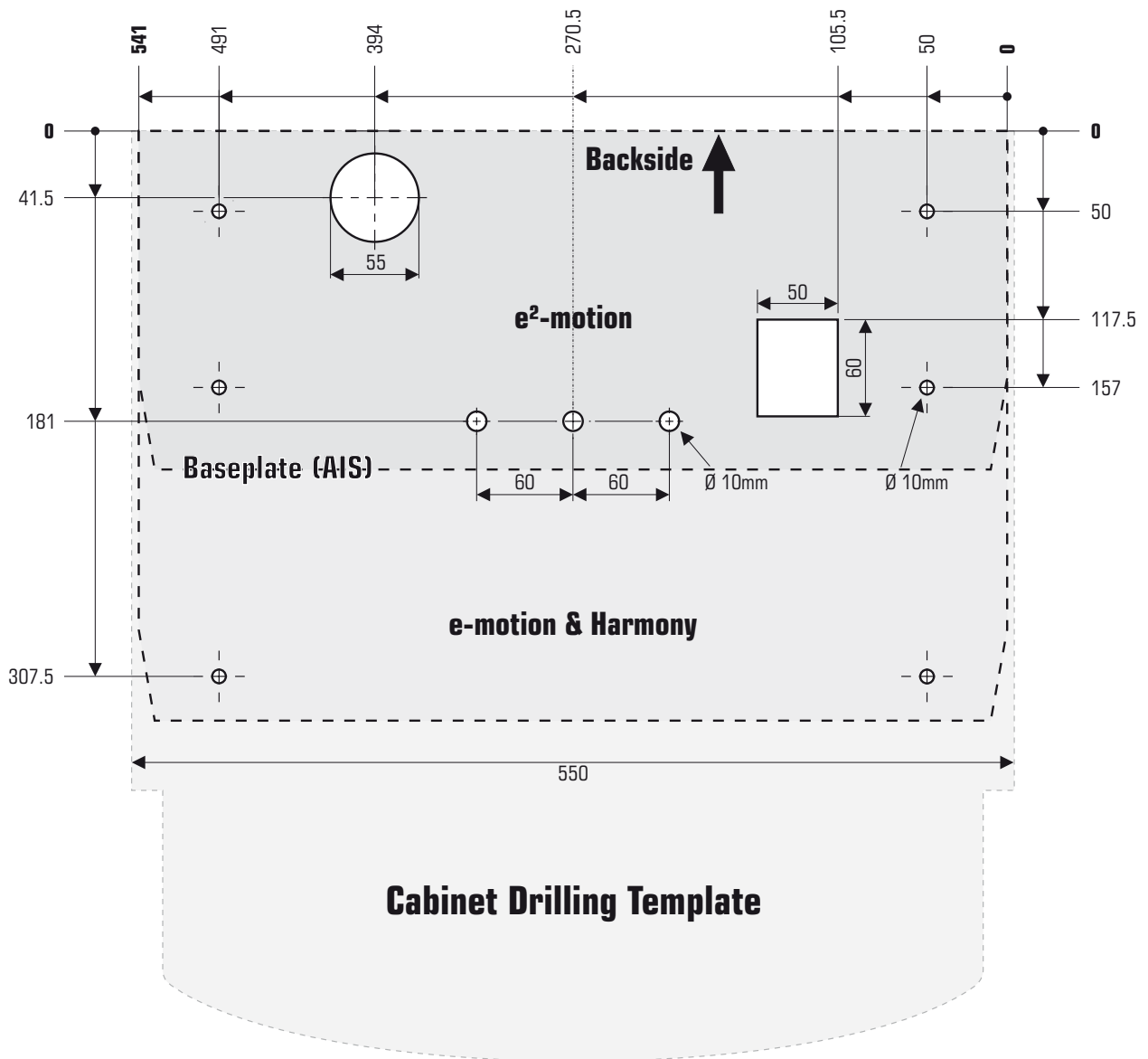
Atronic Germany (International Headquarter)	(+49)	5741 24099 950
Atronic Peru	(+51)	161 832 00
Atronic United Kingdom	(+44)	1727 855 966
Atronic Russia	(+7)	495 7377 299

If technical assistance is required outside of normal business hours, please contact one of the Atronic Technical Hotline numbers below.

### **Atronic Technical Hotline numbers:**

For technical assistance in Europe, South Africa, Asia, Central and South America outside of normal business hours:	(+49)	5741 24099 999
---	-------	----------------

## 11. Drilling Template



***Make sure to leave min. 180mm (7.1") distance to the next machine or a wall on both sides of the cabinet. Do not cover the ventilation slots at the backside of the cabinet.***