

e-motion™ Hi(!)bility™
Parts Catalogue



1. Release Info / Disclaimer

e-motion™ Hi(!)bility™
Parts Catalogue

Rev. 2.7

Rel. October 2008

Copyright Notice:

© 2003 - 2008, Atronic. All rights reserved.

No part of this publication may be copied or distributed, transmitted, transcribed, stored in a retrieval system, or translated into any human or computer language, in any form or by any means, electronic, mechanical, magnetic, manual, or otherwise, or disclosed to third parties without the express written permission obtained from a properly authorized official of Atronic.

DISCLAIMER

Atronic makes no representation or warranties, express or implied, with respect to this publication, or any product of Atronic, including but not limited to warranties of merchantability or fitness for any particular purpose. Atronic reserves the right to make changes, enhancements, revisions and alterations of any kind to this publication or the product(s) it covers without obligation to notify any person, institution or organization of such changes, enhancements, revisions and alterations.

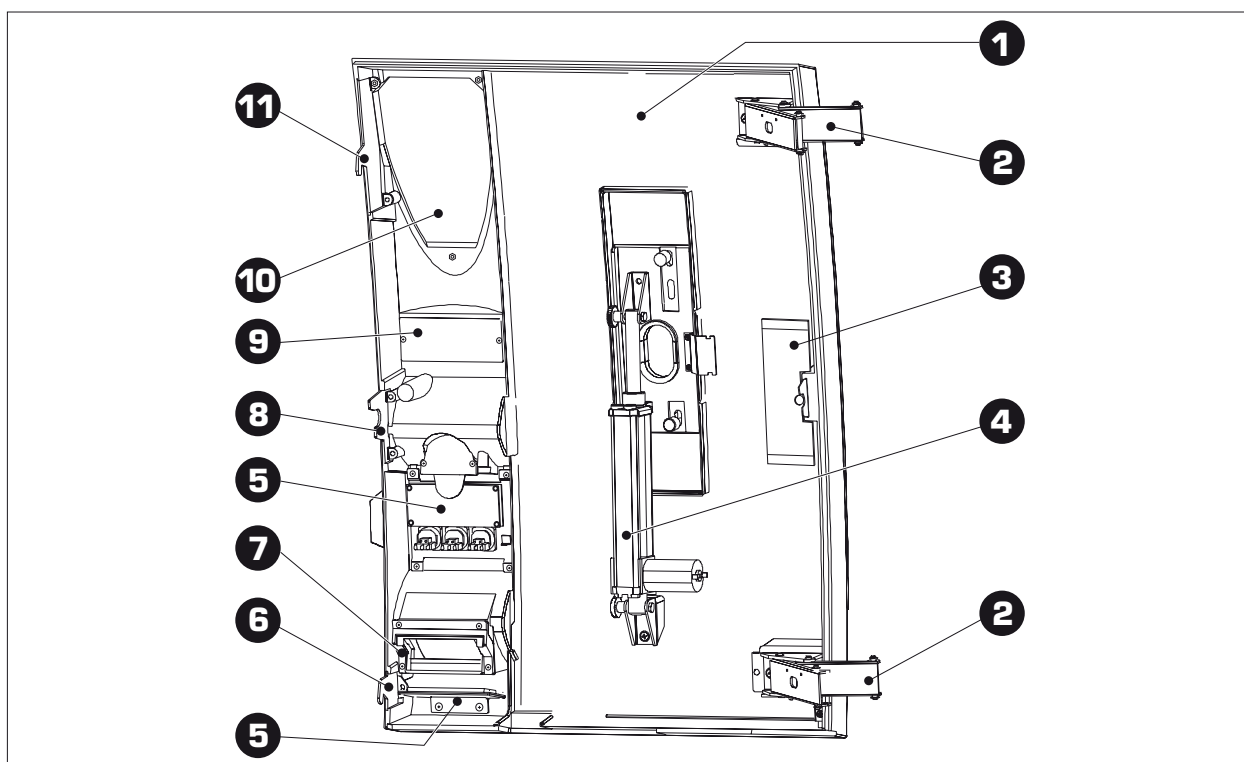
TRADEMARKS

This document may contain trademarks of Atronic. All other brand and product names are trademarks or registered trademarks of their respective companies.

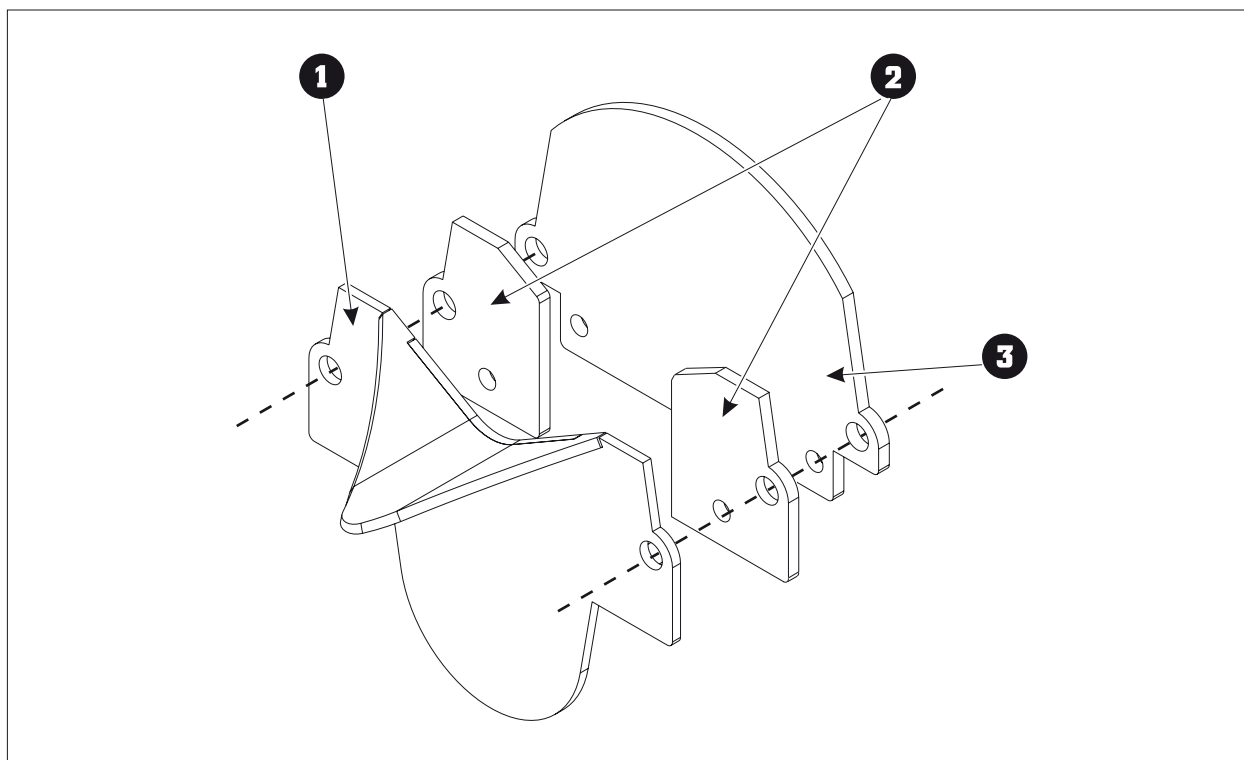
Table of Contents

1. Release Info / Disclaimer	2
2. Main Door.....	4
2.1 Coin Entry	5
3. Cabinet.....	6
3.1 Logic Box.....	7
3.2 Coin Unit	8
4. Hopper Drawer	9
4.1 Hopper.....	10
5. Playfield.....	11
5.1 Button Panel HIRB.....	12
5.2 Button Panel HI04	13
5.3 Displays.....	14
6. Wiring Diagram.....	15
6.1 Cable.....	16
6.2 Boards & Torx	18

2. Main Door



Pos.	Part No.	Nomenclature	Comment
1	65036555	ASP MD Maindoor BV04 #05	Black Metallic, other colors available
2	65040123	BG Hinge - EMC #00	Hinge for replacment, 2 pc. each machine
3	65033055	Center Square 1 welded - EMC #00	
4	65040710	ASP MD Doormotor 24 V BAM 04	Doormotor with cable
5	65035751	ASP MD Backlight_112x48mm_wt_12V #02	Illuminator with cable
6	65023183	Striking plate down - EMC	
7	65030420	Adaptor JCM Maindoor EMC #02	Frame for JCM bill validator
n/a	65036558	ASP MD BV-Cover welded 4V04 #01	Blanking plate, Black Metallic, for use without bill validator
8	65023185	Center Square - EMC	
9	65036560	ASP MD Cover Maindoor TP 4V04 #02	Blanking plate, Black Metallic
10	65036562	ASP AS Cover Maindoor 4V04 #02	Blanking plate, Black Metallic, System specific covers available
11	65023184	Striking plate up - EMC	

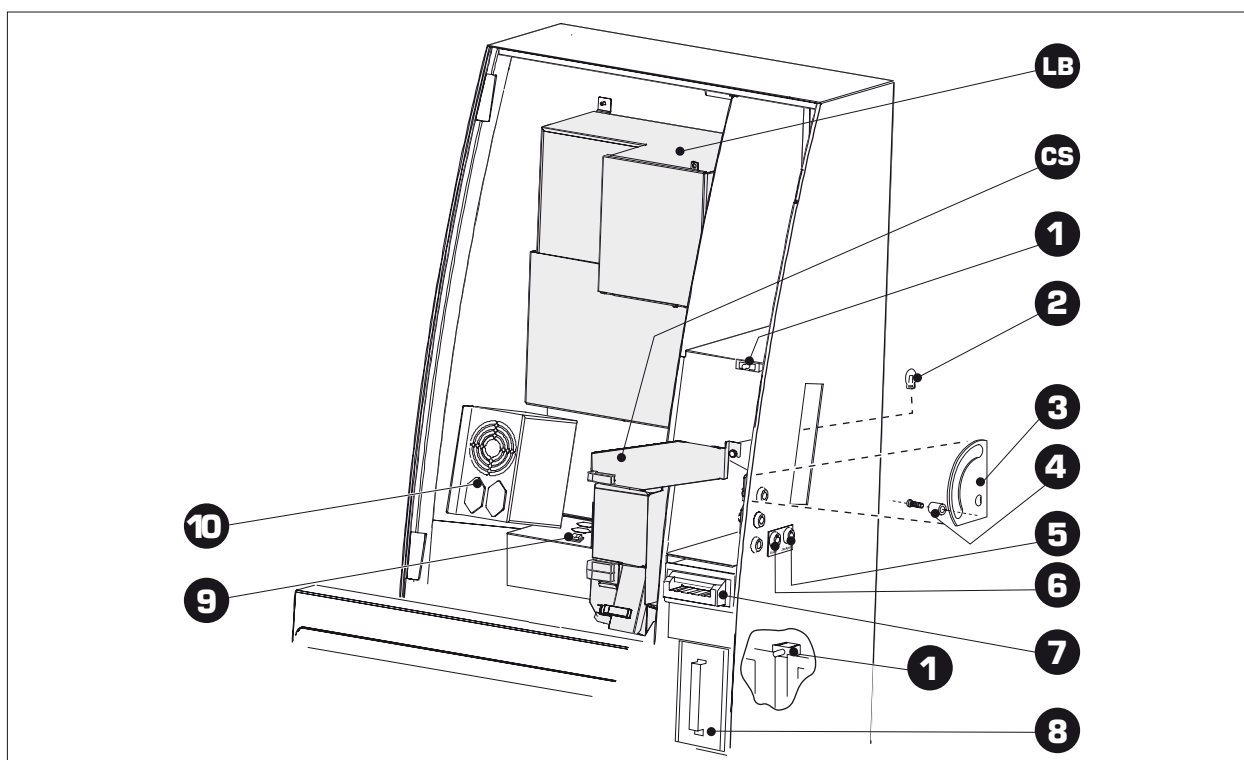


Pos	Part No.	Nomenclature	Comment
1	65023232	ASP MD Coin Entry Front 4G03 #02	Chrome finish
2	650.....	Coin Geometry - XX.X / X.X - EMC #01	Part-number depends on coin size*, 2 pieces each machine
3	65023324	ASP MD Coin Geometry Coinless 4G01 #01	For coinless operation, chrome, 1 piece each machine

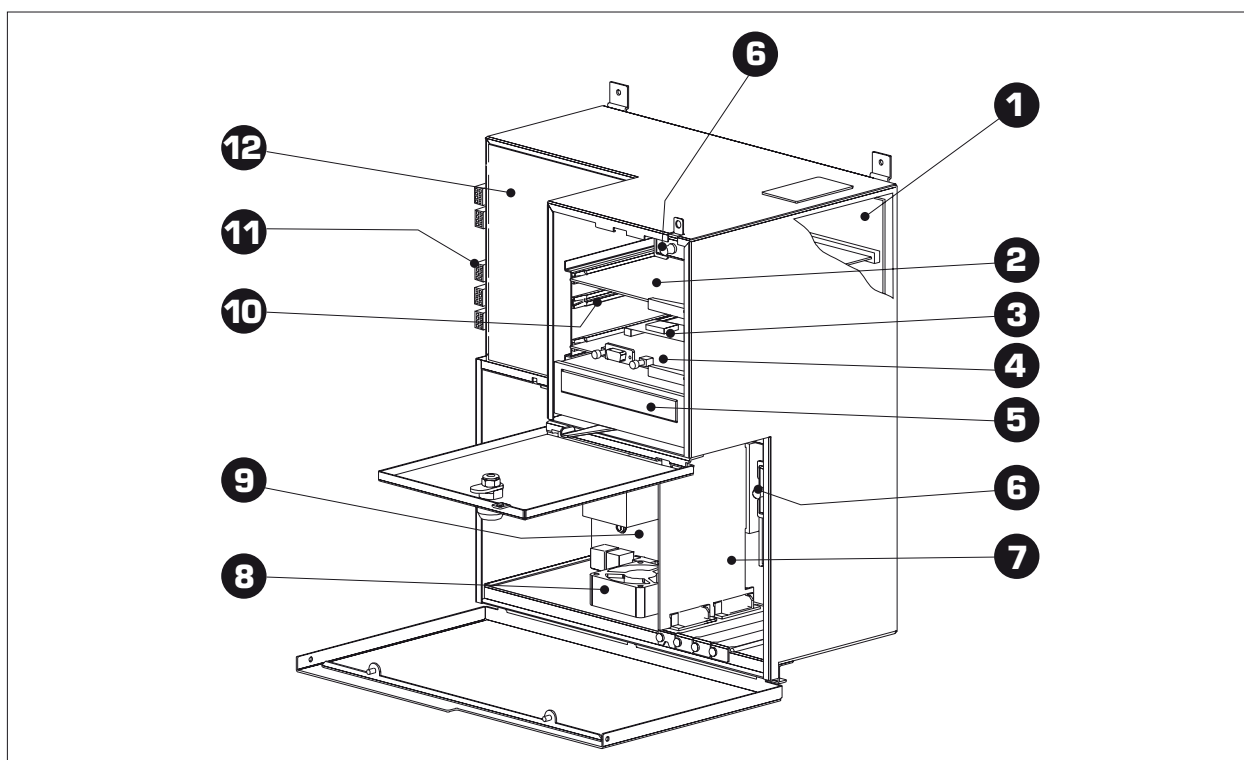
Please contact Atronic Technical Service, if you intend to do a coin conversion. Atronic offers complete conversion kits according to customer specification.

*Specification of Coin Geometry has to be 0.5 - 1 mm wider and 0.2 - 0.75 mm thicker than the coin.

3. Cabinet

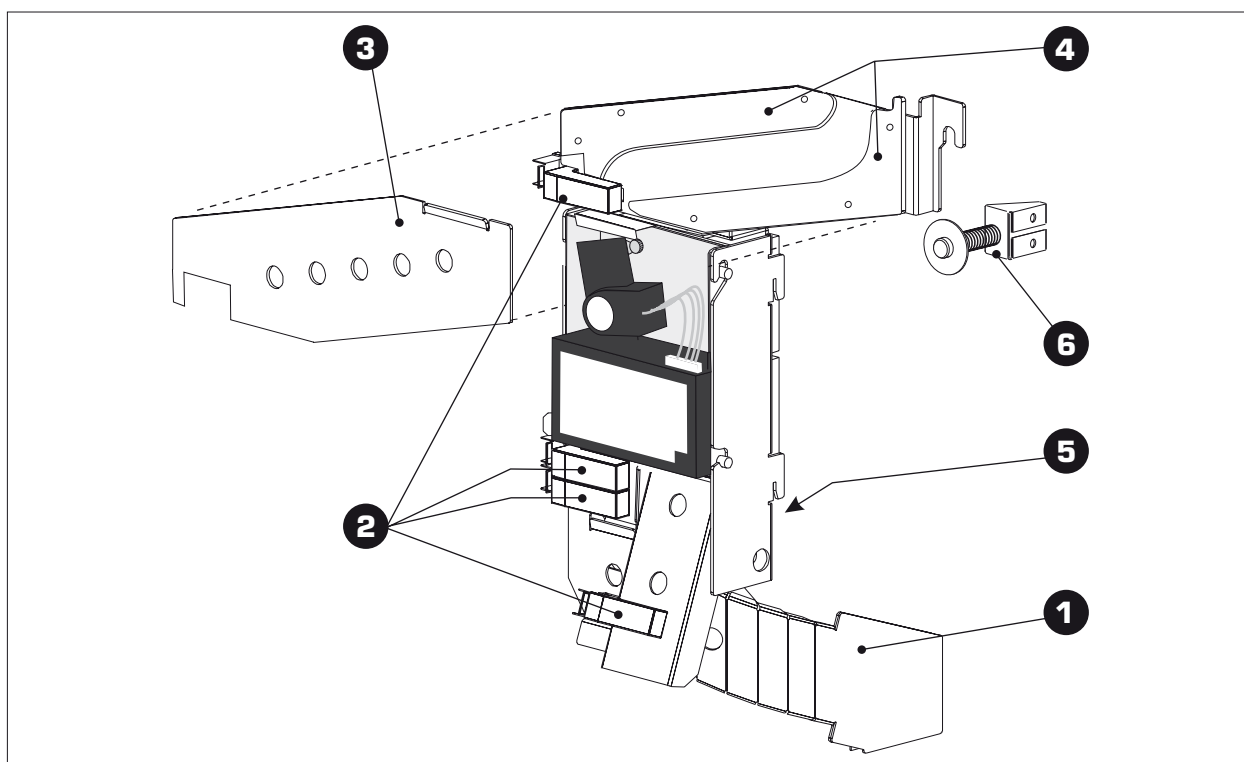


Pos	Part No.	Nomendature	Comment
1	65012427	Button Push Honeywell 2DM409 double pole	
2	65003778	Lamp 14V, 2.6W	
3	65027476	CAM Maindoor and Acc. Door - EMC #02	
4	65027475	ASP HO Bush for Lock angle 6RAW 02	
	65027456	Screw Shoulder M4x10 DIN923	Screw for 65027475
5	65018816	Switch Lock S2D321 QA / R2002	Jackpot key
6	65018815	Switch Lock S2D321 QA / R2001	Audit key
7	65033502	Validator JCM Faceplate blue 67mm	
	65033504	Validator JCM Faceplate blue 71mm	
	65033505	Validator JCM Faceplate blue 77mm	
	65033506	Validator JCM Faceplate blue 81mm	
	65033507	Validator JCM Faceplate blue / Euro	
8	65022383	Stacker, BV JCM WBA-SS2/SU2 (Cashbox)	Metal cashbox for JCM UBA/WBA
	65042845	BVHW JCM Stacker SS/SU plastic	Plastic cashbox for JCM UBA
9	65029832	SP SO ARCOL SWIT_Rocker Switch	Mains switch
10	65035404	Power Supply BAM 350W-24V-ATX act. PFC #00	
LB		Logicbox, see section 3.1 on next page for details	
CS		Coin Unit, see section 3.2 on page 8 for details	



Pos	Part No.	Nomenclature	Comment
1	65024372	PCBA Backplane Hi! STD 03 r02	
2	65023743	PCBA Commboard 68K STD 2.10 r08	Optional
n/a	65034829	PCBA CommKey-A STD 01 r01	Optional, dongle for ticket-in function
3	65036910	PCBA MEMX-RAM-NP HI STD 00 r02	Add-on board for security device, use with software level B1.2.3. and higher
4	65027995	PCBA Mainboard HI STD 05 r07	
5	65037802	DVD-Drive BAM 12V 02	
6	65012427	Button Push Honeywell 2DM409 double pole	
7	65047592	PCBA Graphicboard VP11_82 HI STD 00 r01	features VP11_2CH and advanced functionality
8	65042499	ASP Fan 12V/2.8W 60 x 25 BAM 01	
9	65025265	PCBA MMPC Board C566-256MB HI STD 02rA4	MMPC board for 566Mhz CPU
	65044976	PCBA MMPC Board C1.2-256MB HI STD 04r02	MMPC board for 1.2Ghz CPU
10	65001050	Guide Rail Logic Box	
11	65023783	PCBA Filterboard-Power HI STD 00 r02	
12	65027579	PCBA Filterboard-Signal HI STD 02 r02	

See also wiring diagram in [section 6](#) on page 15 for a complete listing of boards and cables.

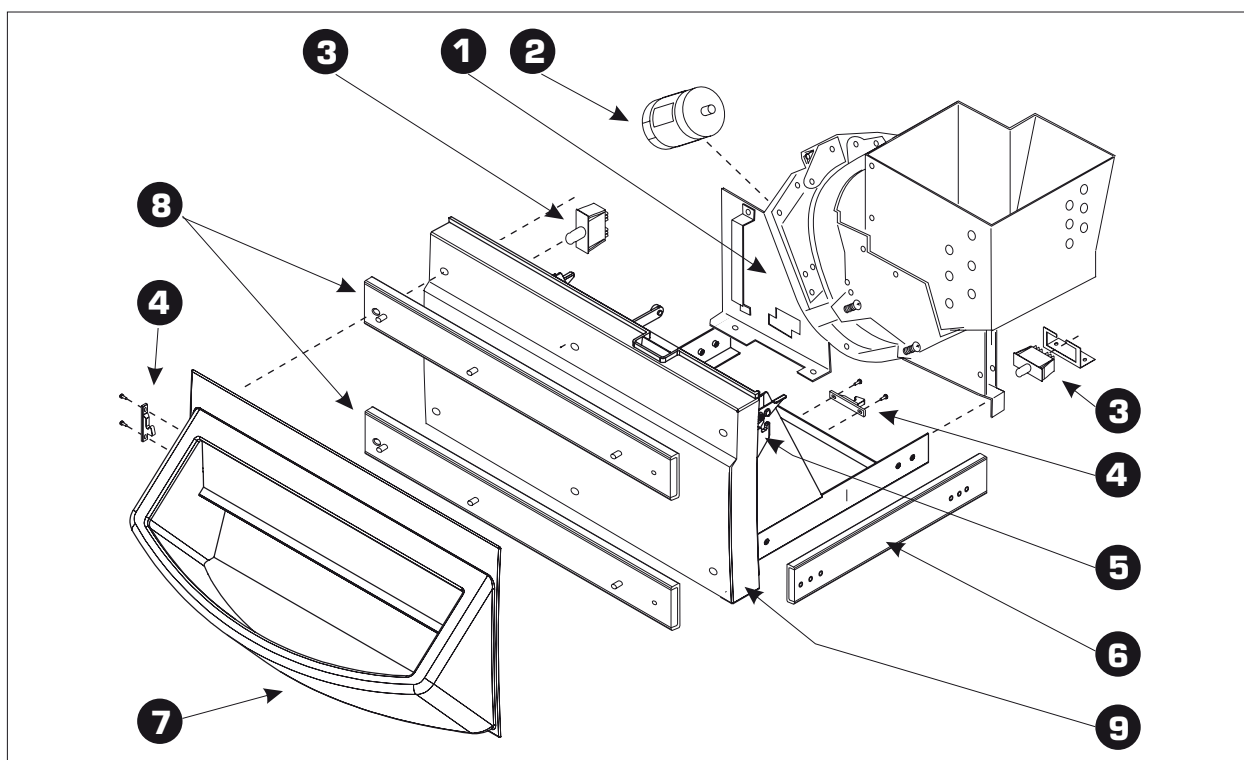


Pos	Part No.	Nomenclature	Comment
1	65034915	ASP CC Coin Sorting welded 4G01 06	Coin unit assembly, without parts 2 - 5,
2	65023318	PCBA Optodevice HI STD 02 r01	
	65015697	Cable Ribbon CoinBd / OptoDvc 02	Cable for optodevices
3	65036040	ASP CC Cover Coin Sorting 4G01 #02	
4	65026820	Coin Geometry Coinsorting - 25/2 #00	Coin geometry for standard CC-16, MC-16
	65023327	Coin Geometry Coinsorting - 29/2.9 #01	acceptors, please ask for other types.
	65032754	Coin Geometry Coinsorting - 29/4 #00	Specification of coin geometries has to be
	65023328	Coin Geometry Coinsorting - 40/3.6 #01	min. 0.5mm wider than coin dimensions,
	65032993	Coin Geometry Coinsorting - 40/4 #00	
5	65040595	ASP CC Solenoid C-Cage Micro Fit BAM 03	Solenoid with cable and diode
6	65040248	BG Holding Device 2 Coin Sorting	

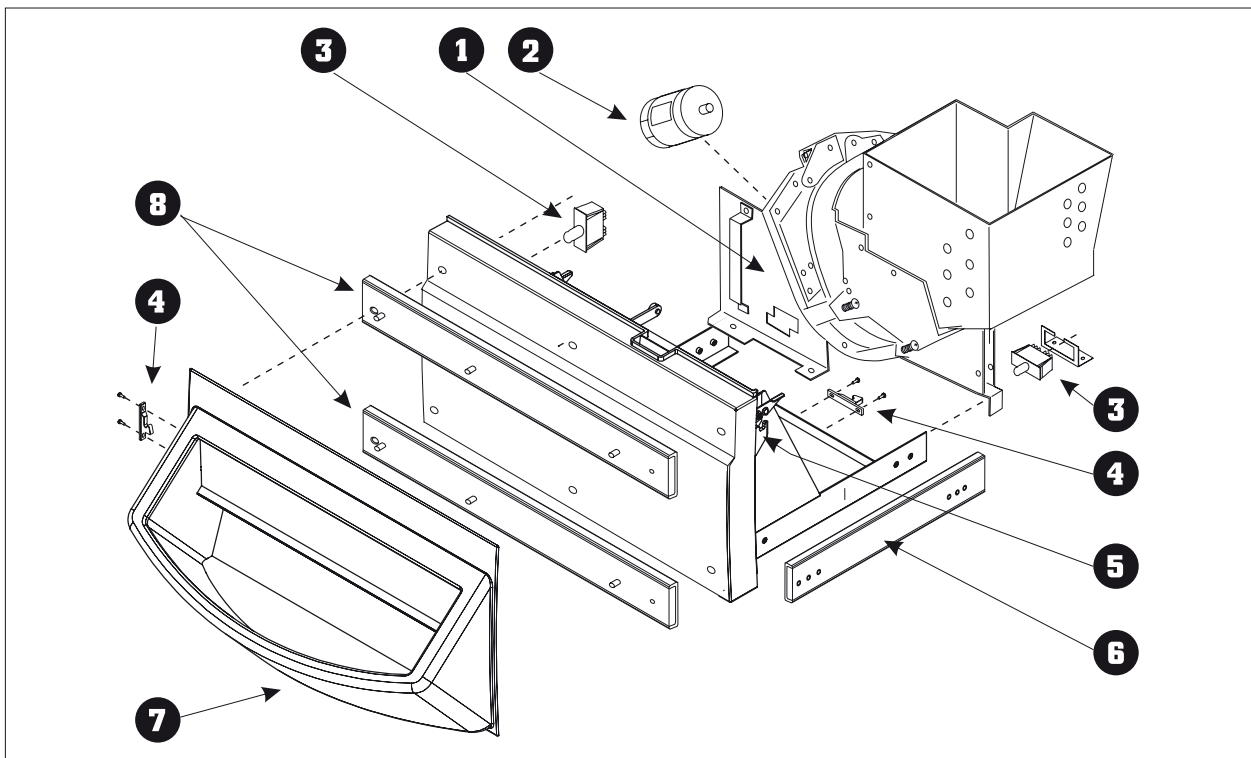
Coin Acceptor

There are several types and models of coin acceptors available. Please contact Atronic Technical Service when ordering a coin acceptor. Please specify coin type, dimensions and weight.

4. Hopper Drawer

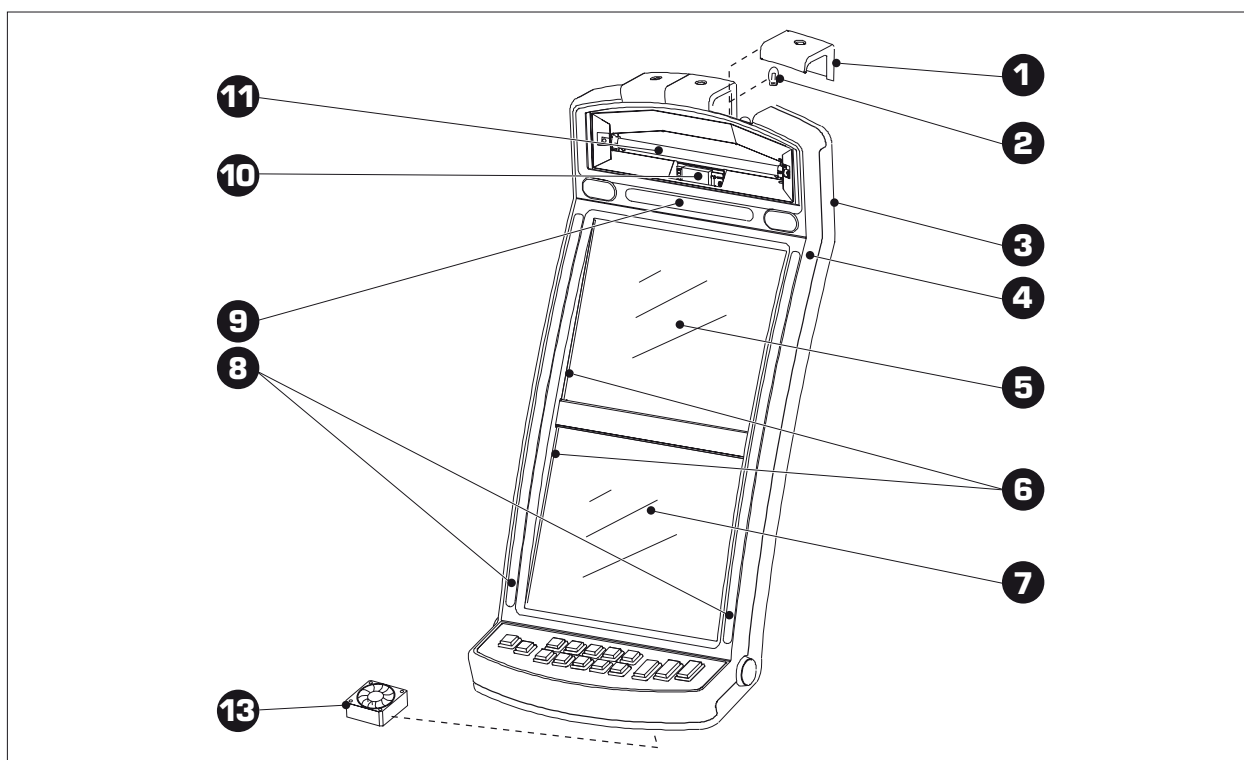


Pos	Part No.	Nomenclature	Comment
1		Hopper	(see next page for details)
2	65003952	Hopper-Motor -SUZO 24Volt (14-0654-1350)	
	65008130	Hopper Asahi Motor DC24V, 24 PRIM No4x12	
3	65012427	Button Push Honeywell 2DM409 double pole	
4	65014571	Grabber Door Catch C3-810	Includes catch and keeper
5	65035073	ASP SF Security angle Coinbowl 1 #01	
6	65037448	Slide Accuride C3301-12-DID #00	
7	65034819	ASP SF Coin Bowl 1 welded 1RAW #04	Coin bowl, metal part
	65036552	ASP SF Coinbowl 1 BV04 #02	Coin bowl cover, plastic part, Black metallic
8	65036568	Slide Accuride CZ 0204-0012 S 00	
9	65042417	ASP SF Shelf welded 4G01 #07	

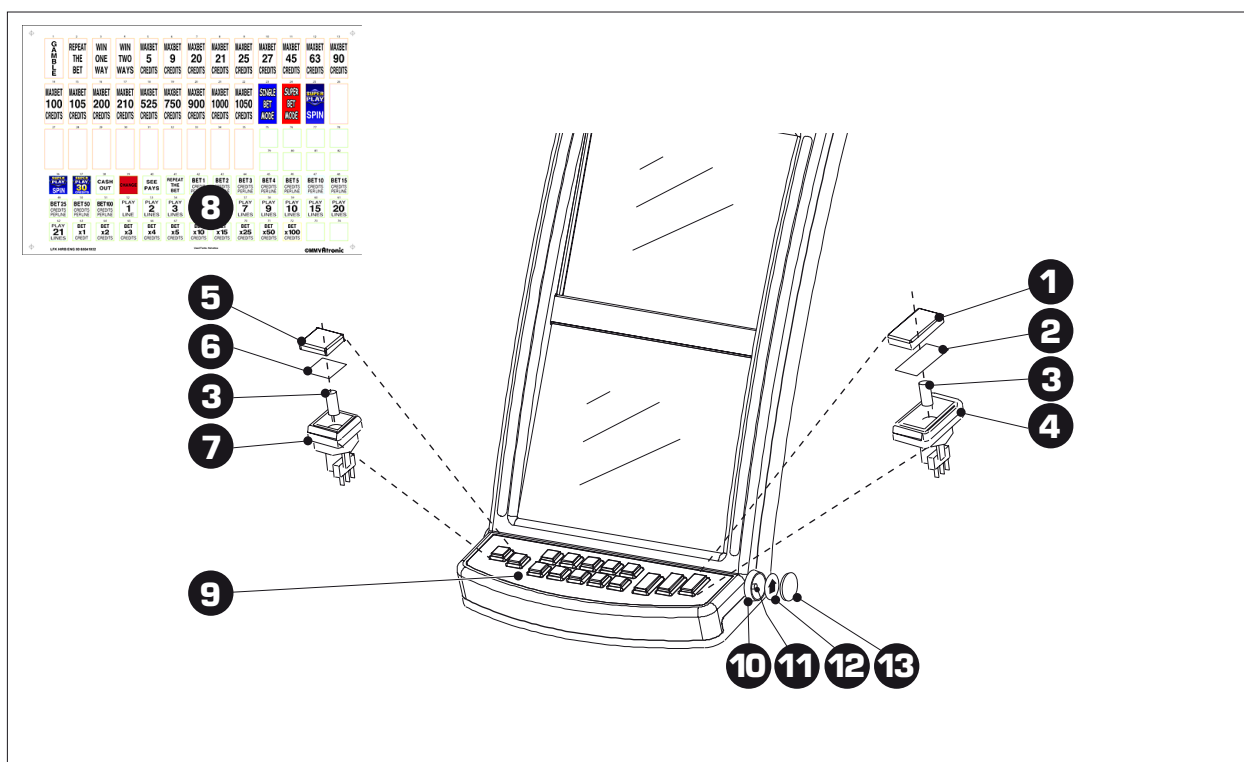


Pos	Part No.	Nomenclature	Comment
1	65031022	HOPPER-SUZO-AMP 18.0-18.9 mm 24V EMC#02	Please contact Atronic Technical Service if you have any questions finding a convenient Hopper or if you intend to do a coin conversion.
	65031023	HOPPER-SUZO-AMP 19.0-20.0 mm 24V EMC#02	
	65031024	HOPPER-SUZO-AMP 20.1-22.0 mm 24V EMC#02	
	65031025	HOPPER-SUZO-AMP 22.1-24.8 mm 24V EMC#02	
	65031026	HOPPER-SUZO-AMP 24.9-25.8 mm 24V EMC#02	
	65031027	HOPPER-SUZO-AMP 25.9-27.8 mm 24V EMC#02	
	65031028	HOPPER-SUZO-AMP 27.9-32.0 mm 24V EMC#02	
	65031029	HOPPER-SUZO-AMP 31.1-31.9 mm 24V EMC#02	
	65031030	HOPPER-SUZO-AMP 32.0-33.0 mm 24V EMC#02	
	65031031	HOPPER-SUZO-AMP 33.1-35.0 mm 24V EMC#02	
	65031032	HOPPER-SUZO-AMP 35.1-36.9 mm 24V EMC#02	
	65031033	HOPPER-SUZO-AMP 37.0-38.0 mm 24V EMC#02	
	65017292	Hopper Asahi DH750#E35 (24.3x1.7 mm)	
	65019309	Hopper Asahi DH750#E35 (26.0x1.6 mm)	
	65018272	Hopper Asahi DH750#E35 (24.3x2.4 mm)	
	65019310	Hopper Asahi DH750#E35 (23.5x1.8 mm)	
	65019311	Hopper Asahi DH750#E35 (21.4x1.8 mm)	
	65019322	Hopper Asahi DH750#E35 (21.3x2.0 mm)	
	65023774	Hopper Asahi DH750#E35 (25.0x1.5 mm)	
	65024129	Hopper Asahi DH750#E35 (23.5x2.4 mm)	
	65024130	Hopper Asahi DH750#E35 (21.3x2.2 mm)	
n/a	65047880	ASP SF Hopper Cover Asahi 750 4G01 #00	optional for DH-750 / EH-750

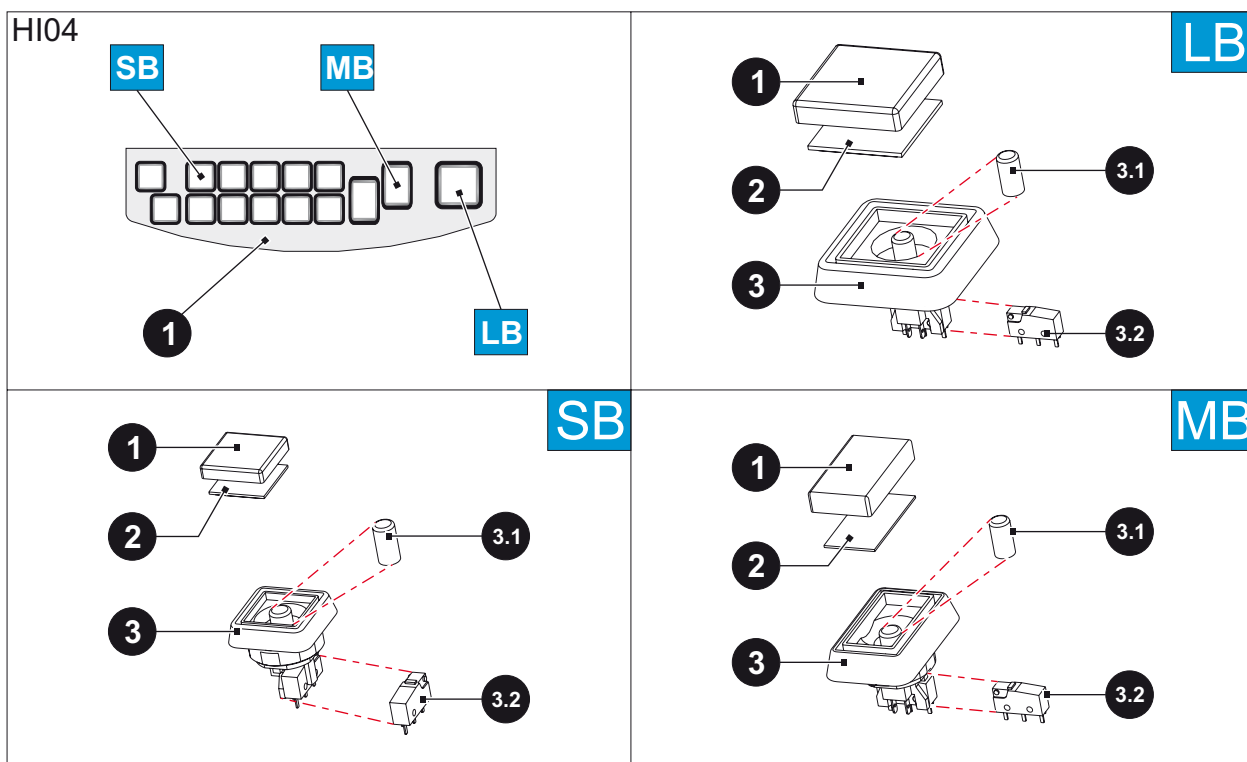
5. Playfield



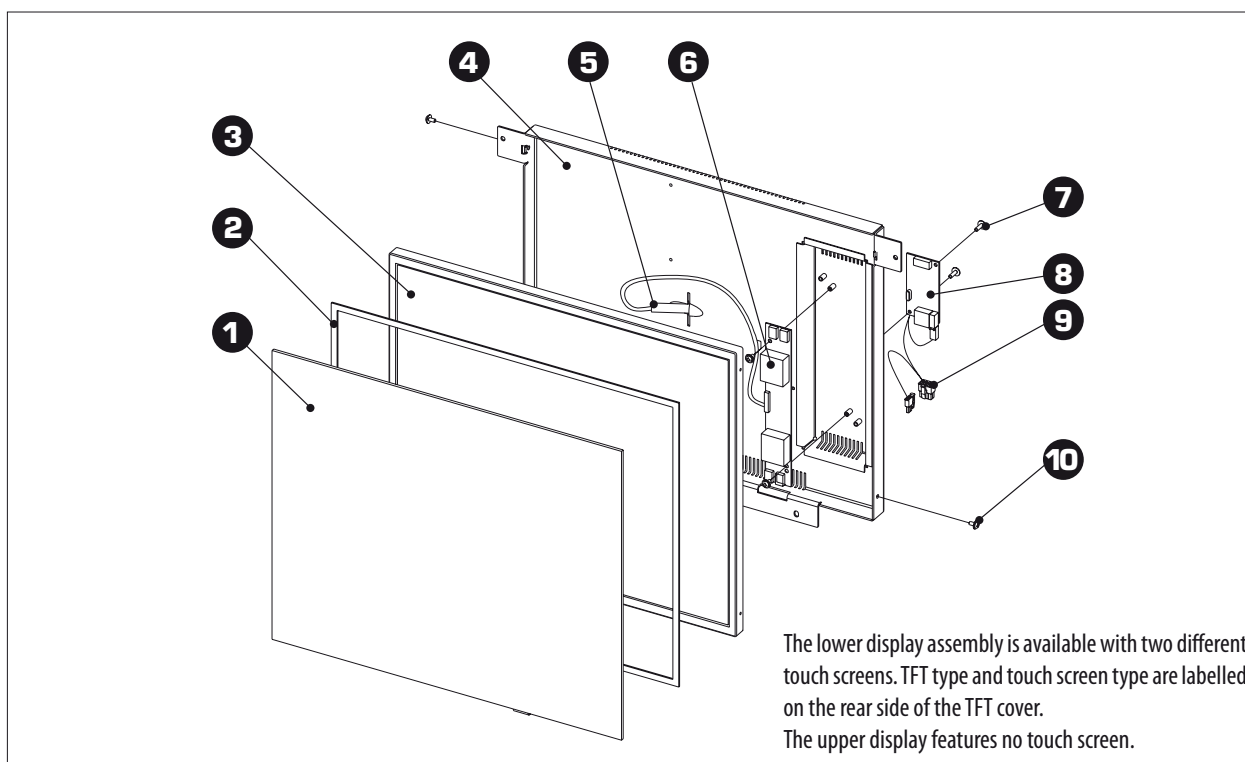
Pos	Part No.	Nomenclature	Comment
1	65022661	ASP MD Toplight Cover red #03	
	65022782	ASP MD Toplight Cover orange #03	
	65022783	ASP MD Toplight Cover yellow #03	
	65022784	ASP MD Toplight Cover green #03	
	65022785	ASP MD Toplight Cover blue #03	
	65022786	ASP MD Toplight Cover #03	
	65033264	ASP TL Blockoff Plate EMC EV04	Black metallic, replaces all 3 toplight covers, use with topper
2	65003778	Lamp 14V, 2.6V	
3	65035717	ASP MD TFT Frame Rear BV04 #03	Black metallic
4	65035714	ASP MD TFT Frame Front BV04 #03	Black metallic
5	65045035	ASP MD TFT E8 Unit Top without Touch 04	Complete upper display assembly
6	65023365	Seal TFT 4mm EMC 00	Required for 3M touch screens only
and	65029273	Tape double sided 4mm	Tape to fix sealing
7	65044214	ASP MD TFT Kit 17" Bottom BAM (E8/3M)	Complete lower display assembly with 3M touch
or	65044214	ASP MD TFT Kit 17" Bottom BAM (E8/GT)	Complete lower display assembly with GEN touch, see next page
8	65022847	Framelight Cover left/right - EMC #01	
	65025213	PCBA FL-Sideboard-High HI STD 02 r01	Framelights high
	65025214	PCBA FL-Sideboard-L HI STD 02 r01	Framelights low
9	65022846	Framelight Cover top -EMC #01	
	65025215	PCBA FL-Topboard HI STD 02 r01	Framelights top
10	65028143	Ballast Coil 12V 8W TM80041 #00	
11	65002256	Lamp fluorescent TL8W/33 410 lm	TL8W/33, 300mm, 410 Lumen, color temperature 4100 K, 56V
12	65042500	ASP Fan 12V/1.4W 60 x 25 BAM 01	



Pos	Part No.	Nomenclature	Comment
1	65013354	Lenscap RCT-SM clear	Rectangular Lenscap, clear
2	65020294	APL A13 Blank 00	Legend foil plate, blank
3	65040420	SP BP MECH_LED 12V white w. white holder	Spare LED for panel buttons
4	65029376	Btn RCT-SM woLCwoPlwLED A013117046E0000	Rectangular button with LED and switch, without lens cap and legend foil plate
5	65029377	Btn CP-SM woLCwoPlwLED A013317046E0000	Quadratic button with LED and switch without lens cap and legend foil plate
6	65012361	APL A07 Blank 00	Legend foil plate, blank
7	65012204	Lenscap CP-SM clear	Quadratic Lens cap, clear
	65012203	Lenscap CP-SM red	Quadratic Lens cap, red, for service panel
8	65041832	LFK HIRB ENG 00	
	65042261	LFK HIRB RUS 00	
	65042965	LFK HIRB ESP 00	
	65044317	LFK HIRB CHI 00	
9	65036039	BPG HIRB woLC woPL EMC 2RAW #06	Complete button panel with buttons and LEDs, but without lenscaps and legend foil plate
10	65031035	Btn RM woLCwoPlwLED A010626042N0000	Up/down button without Lens cap, with LED
11	65031337	SP BP MECH_LED 12V triple white Standard	Spare LED for up/down buttons
12	65030438	Plastic Legend RM white „UP“	For right „UP“ button
	65030437	Plastic Legend RM white „DOWN“	For left „DOWN“ button
13	65031036	Lens cap RM clear	Lens cap for up/down button

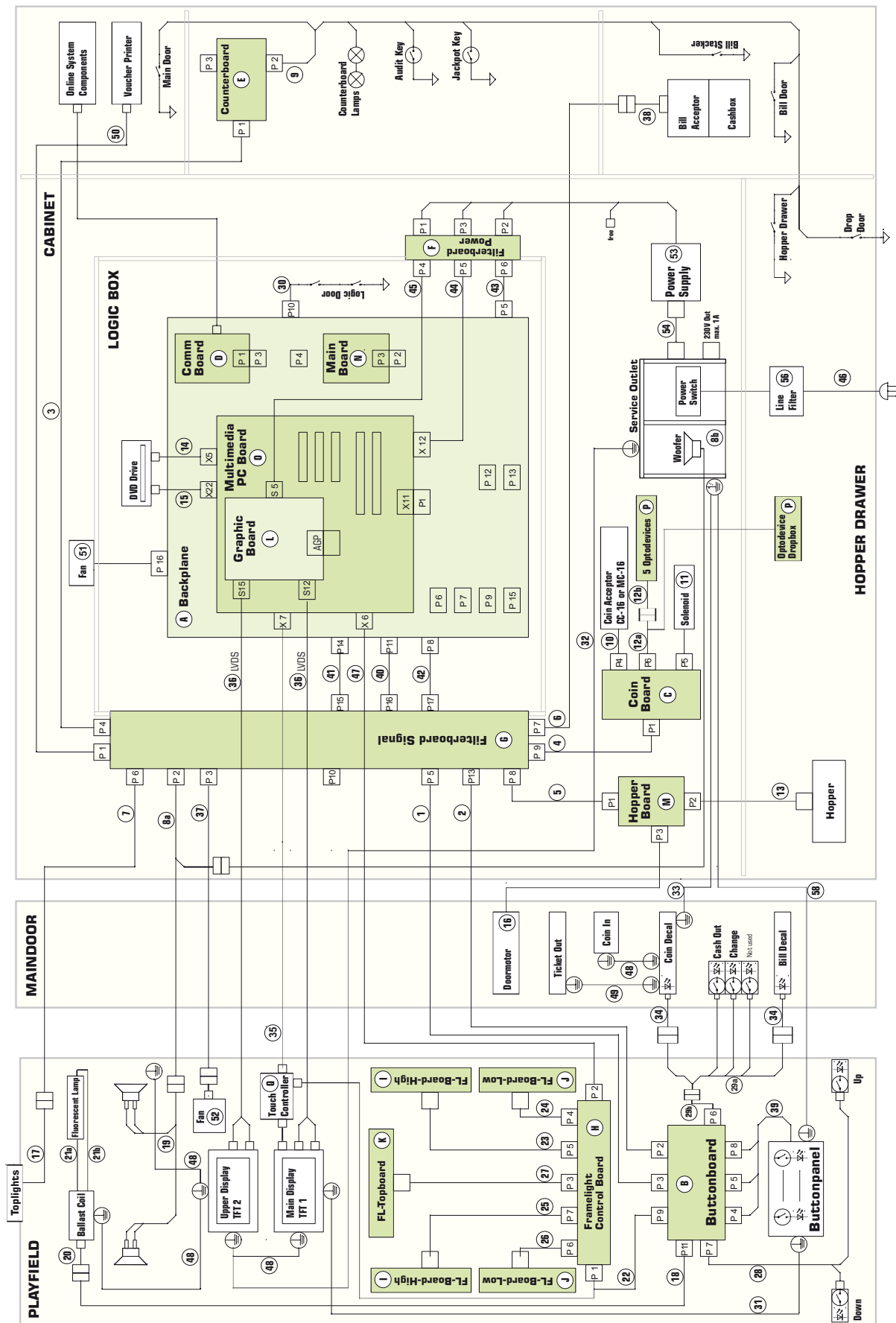


Pos.	Part-No.	Nomenclature	Comment
E-1	65046821	BGP HI04 wCL wPL 2RAW #00	
LB-1	65047101	ALC BAM G03 #00	
LB-2	65047100	APL BAM A03 BLANK #00	
LB-3	65047097	Btn BAM Square Large #00	
LB-3.1	65040420	SP BP MECH_LED12 white w. white holder	Use only one type of LED for a button panel!
or	65044166	SP BP MECH_LED12 white Suzo/happ	
LB-3.2	65033827	Switch Push CHERRY DB 5 G B1 BA	
SB-1	65049348	ALC BAM G06 #00	
SB-2	65049347	APL BAM A06 BLANK #00	
SB-3	65049346	Btn BAM Square Medium #00	
SB-3.1	65040420	SP BP MECH_LED12 white w. white holder	Use only one type of LED for a button panel!
or	65044166	SP BP MECH_LED12 white Suzo/happ	
SB-3.2	65033827	Switch Push CHERRY DB 5 G B1 BA	
MB-1	65047143	ALC BAM G14 #00	
MB-2	65047142	APL BAM A14 BLANK #00	
MB-3	65047098	Btn BAM Rectangular Medium #00	
MB-3.1	65040420	SP BP MECH_LED12 white w. white holder	Use only one type of LED for a button panel!
or	65044166	SP BP MECH_LED12 white Suzo/happ	
MB-3.2	65033827	Switch Push CHERRY DB 5 G B1 BA	
LEGEND FOIL KIT	65049860	LFK HI04 ENG #04	
	65049892	LFK HI04 RUS #04	
	65049893	LFK HI04 POR #04	
	65049894	LFK HI04 ESP #04	
	65049895	LFK HI04 FRA #04	
	65049896	LFK HI04 CHI #04	



Pos	Part No.	Nomenclature	Comment
	65044214	ASP MD TFT Kit 17" Bottom BAM (E8/3M)	Complete lower display assembly with 3M touch
1	65040173	TouchCtrl 3M	Touch screen incl. controller
2	65044528	Adhesive tape 3M	(1.5 meters)
3	65040166	TFT 17" SAM SXGA LTM170E8-L01 #00	
4	65044232	ASP MD TFT-Cover Buttom #04	
5	65044566	Cable LVDS Graphicboard - TFT BAM 00	
6	65040158	PCBA Inverter GH053A-A2 STD #00	
or	65040176	PCBA Inverter FIF-1742-40A #00	
7	65015721	Screw M3x10 Ecofix	
8	-	Touchcontroller board	Included in pos. 1 / 65040173
9	65044329	Cable harness FICrtIBd / BtnBd / TouchPower #00	
	65044214	ASP MD TFT Kit 17" Bottom BAM (E8/GT)	Complete lower display assembly with GEN touch
1	65040175	Touchscreen GEN TL4B17-N17 #00	Touch screen only
2-7		same parts as in 65044214	
8	65040174	Touchcontroller GEN 4001SR-M Rev. 2.1 #00	Touch controller
9	65044329	Cable harness FICrtIBd / BtnBd / TouchPower #00	
n/a	65038974	Cable Harness Adapter General Touch	Required adapter for GEN touch controllers
	65045035	ASP MD TFT E8 Unit Top without Touch	Complete upper display assembly (without touch)
1	65040166	ASP MD TFT Top Glass #01	
2-3		same parts as in 65044214	
4	65044701	ASP MD TFT-Cover Top, welded #05	
5-6		same parts as in 65044214	
7-9		not available	

6. Wiring Diagram



Pos	Part No.	Nomenclature	Comment
1	65015686	Cable Ribbon, Filterboard Signal / Buttonboard #01	
2	65015687	Cable Flexible, Filterboard Signal / Buttonboard #01	
3	65015688	Cable Ribbon, Filterboard Signal / Counterboard #01	
4	65015689	Cable Ribbon, Filterboard Signal / Coinboard #01	
5	65015690	Cable Ribbon, Filterboard Signal / Hopperboard #01	
6	65015691	Cable Flexible, Filterboard Signal / JCM Acceptor #01	
7	65015692	Cable Flexible, Filterboard Signal / Toplight - EMC #02	
8	65015693	Cable Harness, Filterboard Signal / Loudspeakers #02	Assembly of cable 8a + 8b
9	65023397	Cable Harness Counterboard / Doorswitch JCM #02	
10	65015695	Cable Flexible, Coinboard / CA CC16 #01	For CC-16, MC-16 coin acceptors
11	65040595	ASP CC Solenoid C-Cage Micro Fit BAM #03	Solenoid with cable and diode
12	65015697	Cable Ribbon, Coinboard / Optodevice #02	Assembly of cable 12a + 12b
13	65015698	Cable Flexible, Hopperboard / Hopper 1 #01	
14	65015699	Cable Ribbon, MMPC Board / CD-ROM Drive #01	
15	65015700	Cable Flexible, MMPC Board / CD-ROM Drive #01	
16	65040710	ASP MD Doormotor 24V BAM #04	Doormotor with cable
17	65023400	Cable Harness, Toplight #02	
18	65023401	Cable Harness Buttonbd - Lamp Fixture 02	
19	65016701	Cable Harness Loadspeaker #02	
20	65027470	Cable Flexible, Lamp Fixture #03	
21	65023305	Cable Flexible, Ballast / Lamp fixture #02	Assembly of cable 21a + 21b
22	65044329	Cable Harness, Framelight Control B./BtnBd/TouchPower 00	Use with internal 3M or GT touch controller
	65038974	Cable Harness Adapter General Touch	Use additionally with General Touch controller
23	65017191	Cable Ribbon, Framelight Control B. / Framelight High right #01	
24	65017192	Cable Ribbon, Framelight Control B. / Framelight Low right #01	
25	65017198	Cable Ribbon, Framelight Control B. / Framelight High left #01	
26	65017199	Cable Ribbon, Framelight Control B. / Framelight Low left #01	
27	65017200	Cable Ribbon, Framelight Control B. / Framelight Top #01	
28	65018632	Cable Harness, Bottonboard / Doormotor Buttons #02	
29	65018787	Cable Harness, Buttonboard / Decals & Service Buttons #01	Assembly of cable 29a + 29b
30	65023495	Cable Harness, Rack Switch #02	Cable to Logicdoor switch
31	65018789	Cable Earth, 16 250 RT I 4 RE I 6,3 #01	Earthing for Buttonpanel
32	65018790	Cable Earth, 16 1000 RT I 4 RE I 6,3 #01	Earthing for TFT monitor
33	65018791	Cable Earth, 16 1250 RE I 6,3 RE I 6,3 #01	Earthing for decals and Service Buttons
34	65035751	ASP MD Backlight_112x48mm_wt_12V #00	Illumination, without bracket (for coin or bill decal)
	65021182	Cable OSRAM Opto Semiconductors #01	Illumination, with bracket (bill decal)
35	65044386	Cable shielded MMPC Long Board / Touch	Serial cable to internal touch controller
36	65036036	Cable LVDS Graphicboard - TFT BAM 00	Standard LVDS display cable
37	65028034	Cable Harness, Filterboard Signal / Fan #02	
38	65008967	CABLE JCM ACCEPTOR - WBA 13 #00	
39	65018659	Cable Harness, Buttonpanel / Buttonboard HiRB #03	
40	65023496	Cable Ribbon, Backplane P11 / Filterboard Signal #01	
41	65023572	Cable Ribbon, Backplane P14 / Filterboard Signal #01	
42	65023573	Cable Flexible, Backplane P08 / Filterboard Signal #01	

Pos	Part No.	Nomenclature	Comment
43	65023787	Cable Flexible, Backplane P05 / Filterboard Power #01	
44	65023803	Cable Flexible, MMPC_Bd / Filterboard Power #01	
45	65023804	Cable Flexible, Graphicboard / Filterboard Power #01	
46	65048593	Cable Power VII-H05VVF3G1 1,00-C13W /3m #00	Mains cable Euro-type 230V, earthed
47	65023488	Cable Flexible, Framelight Control Board / MMPC Board #03	Serial cable
48	65024203	Cable Earth, 16 50 RT I 4 RT I 4 #01	Earthing TFT2 to TFT1
49	65029782	Cable Earth, 16 190 RT I 4 RT I 4 #01	Optional, earthing for ticket printer
50	65035720	Cable Harness, Filterboard Signal - Ticket Printer #03	
51	65025433	ASP Fan 12V / 2.8W 60x25 BAM #01	Logicbox fan
52	65024280	ASP Fan 12V / 1.4W 60x25 BAM #01	Playfield fan
53	65035404	Power Supply BAM 350W-24V-ATX PFC #00	Power supply
54	65015415	Cable Fibre Optic B.-S. QLD #01 - 230V	Mains cable service outlet to power supply
56	65025196	Line Filter Schurter 5110 250V 50-60Hz 6A	International use (incl. USA)
or	65021829	Line Filter Bulgin PS00 250V 50-400Hz 6A	International use (incl. USA)
or	65021828	Line Filter Schurter KFS 250V 50-60Hz 6A	230V / 50Hz only (AI)
57	-	-	
58	65025228	Cable Bonding, Buttonpanel / Service Outlet	

Pos	Part No.	Nomenclature	Comment
A	65024372	PCBA Backplane HI STD 03 r02	
B	65035195	PCBA Buttonboard HI STD #06	
C	65033426	PCBA Coinboard HI STD 05 r05	
D	65023743	PCBA Commboard 68k STD 2.10 r08	Optional
E	65025290	PCBA Counterboard-6C HI STD 03	
F	65023783	PCBA Filterboard-Power HI STD 00 r02	
G	65027579	PCBA Filterboard-Signal HI 02 r02	
H	65025216	PCBA FL-Controlboard HI STD 03 r03	
I	65025213	PCBA FL-Sideboard-High HI STD 02 r01	Framelights high
J	65025214	PCBA FL-Sideboard-L HI STD 02 r01	Framelights low
K	65025215	PCBA FL-Topboard HI STD 02 r01	Framelights top
L	65047592	PCBA Graphicboard VP11_82 HI STD 00 r01	
M	65026931	PCBA Hopperboard HI STD 04 r03	
N	65027995	PCBA Mainboard HI STD 05 r07	
O	65025265	PCBA MMPC-Board C566-256MB HI STD 02 rA4	for 566Mhz CPU
	65044976	PCBA MMPC-Board C1.2-256MB HI STD 04 r02	for 1.2Ghz CPU
P	65023318	PCBA Optodevice HI STD 02 r01	
Q	65040173	TouchCtrl./Screen 3M 17-8421-221 Rxx 00	Assembly of 3M touch screen and controller
	65040174	TouchCtrl. GEN 4001SR-M Rev. 2.1 00	Use with touch screen 65040175 only
	65029832	SP SO ARCOL SWIT_Rocker Switch	Mains switch
	65035404	Power Supply BAM 350W-24V-ATX PFC #00	Power supply

Part No.	Nomenclature	D1	L2	Torx Screwdriver
65023091	Screw EJOT DELTA PT 30x10 WN5451	3mm	10mm	T10
65023112	Screw EJOT DELTA PT 40x12 WN5451	4	12	T20
65023643	Screw EJOT DELTA PT 40x16 WN5451	4	16	T20
65029087	Screw EJOT DELTA PT 50x10 WN5451	5	10	T25
65023113	Screw EJOT DELTA PT 50x16 WN5451	5	16	T25
65023114	Screw EJOT DELTA PT 60x18 WN5451	6	18	T30

