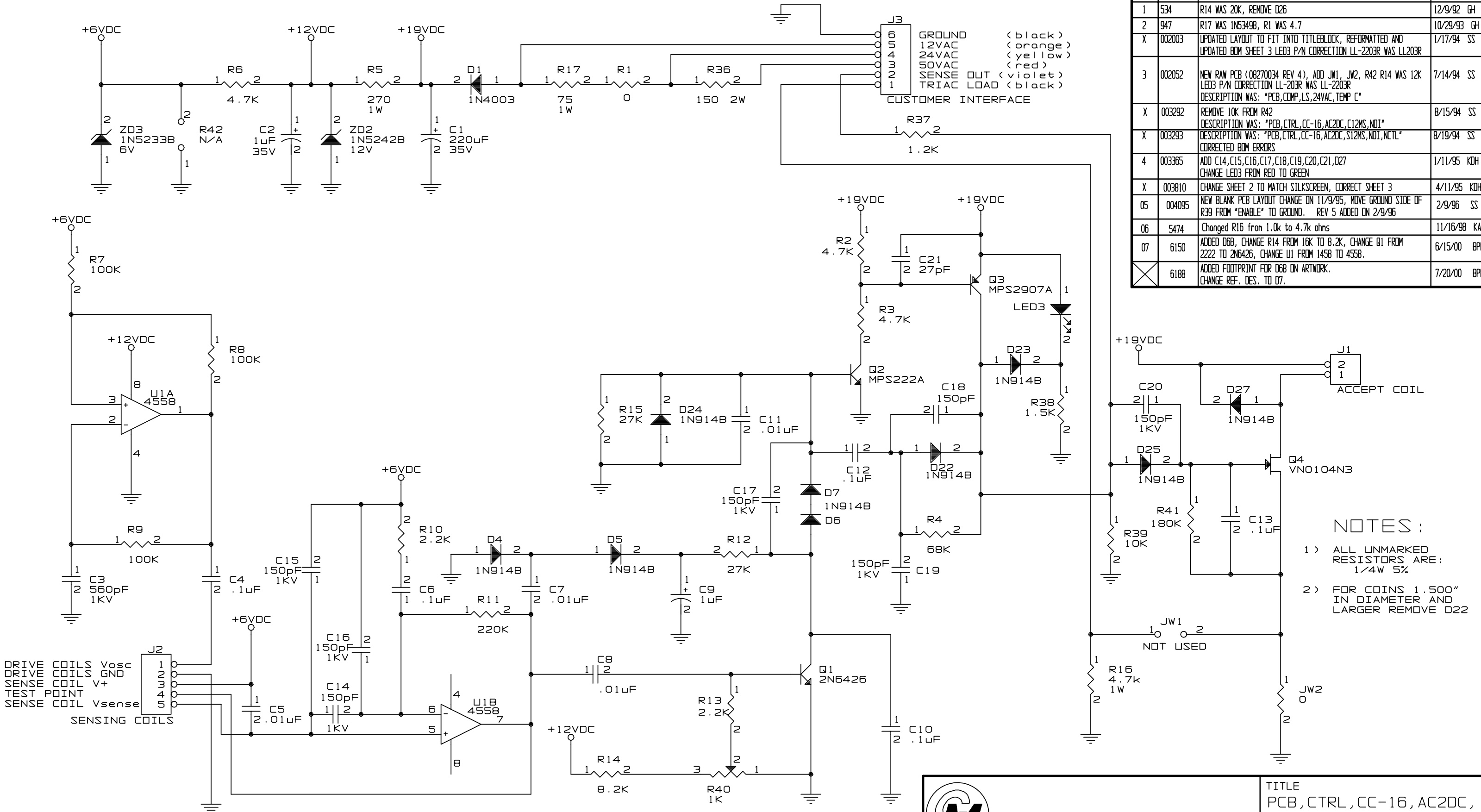


NO.	ECO NO.	REVISIONS	DATE/BY
0	X	RELEASED	4/24/92 SS
1	534	R14 WAS 20K, REMOVE D26	12/9/92 GH
2	947	R17 WAS 1N5349B, R1 WAS 4.7	10/29/93 GH
X	002003	UPDATED LAYOUT TO FIT INTO TITLEBLOCK, REFORMATTED AND UPDATED BOM SHEET 3 LED3 P/N CORRECTION LL-2203R WAS LL203R	1/17/94 SS
3	002052	NEW RAW PCB (08270034 REV 4), ADD JW1, JW2, R42 R14 WAS 12K LED3 P/N CORRECTION LL-2203R WAS LL-2203R DESCRIPTION WAS: "PCB,COMP,LS,24VAC,TEMP C"	7/14/94 SS
X	003292	REMOVE 10K FROM R42 DESCRIPTION WAS: "PCB,CTRL,CC-16,AC2DC,C12MS,NOI"	8/15/94 SS
X	003293	DESCRIPTION WAS: "PCB,CTRL,CC-16,AC2DC,S12MS,NOI,NCTL" CORRECTED BOM ERRORS	8/19/94 SS
4	003365	ADD C14,C15,C16,C17,C18,C19,C20,C21,D27 CHANGE LED3 FROM RED TO GREEN	1/11/95 KOH
X	003810	CHANGE SHEET 2 TO MATCH SILKSCREEN, CORRECT SHEET 3	4/11/95 KOH
05	004095	NEW BLANK PCB LAYOUT CHANGE ON 11/9/95, MOVE GROUND SIDE OF R39 FROM "ENABLE" TO GROUND. REV 5 ADDED ON 2/9/96	2/9/96 SS
06	5474	Changed R16 from 1.0k to 4.7k ohms	11/16/98 KAR
07	6150	ADDED D6B, CHANGE R14 FROM 16K TO 8.2K, CHANGE Q1 FROM 2222 TO 2N6426, CHANGE U1 FROM 1458 TO 4558.	6/15/00 BPP
X	6188	ADDED FOOTPRINT FOR D6B ON ARTWORK. CHANGE REF. DES. TO D7.	7/20/00 BPP




NOTES:

1) ALL UNMARKED RESISTORS ARE: 1/4W 5%

2) FOR COINS 1.500" IN DIAMETER AND LARGER REMOVE D22

DRIVE COILS Vosc  
 DRIVE COILS GND  
 SENSE COIL V+  
 TEST POINT  
 SENSE COIL Vsense



COIN MECHANISMS INC.  
 400 REGENCY DR.  
 GLENDALE HGTS, IL

TITLE  
 PCB, CTRL, CC-16, AC2DC,  
 S12MS, NOI, SC, NCTL

DRAWN	BPP	DATE	6/15/00
CHKD		DATE	
APP		DATE	

DWG NO. 09270126 REV 7

SIZE B SCALE 1"=1 COMP NO. G:\ELEC\DWG SHT 1 of 3

This drawing is the property of and contains proprietary information of Coin Mechanisms, Inc. The drawing shall be returned upon request and is not to be copied or disclosed without written authorization and will not be used in any way detrimental to the interest of Coin Mechanisms, Inc.

