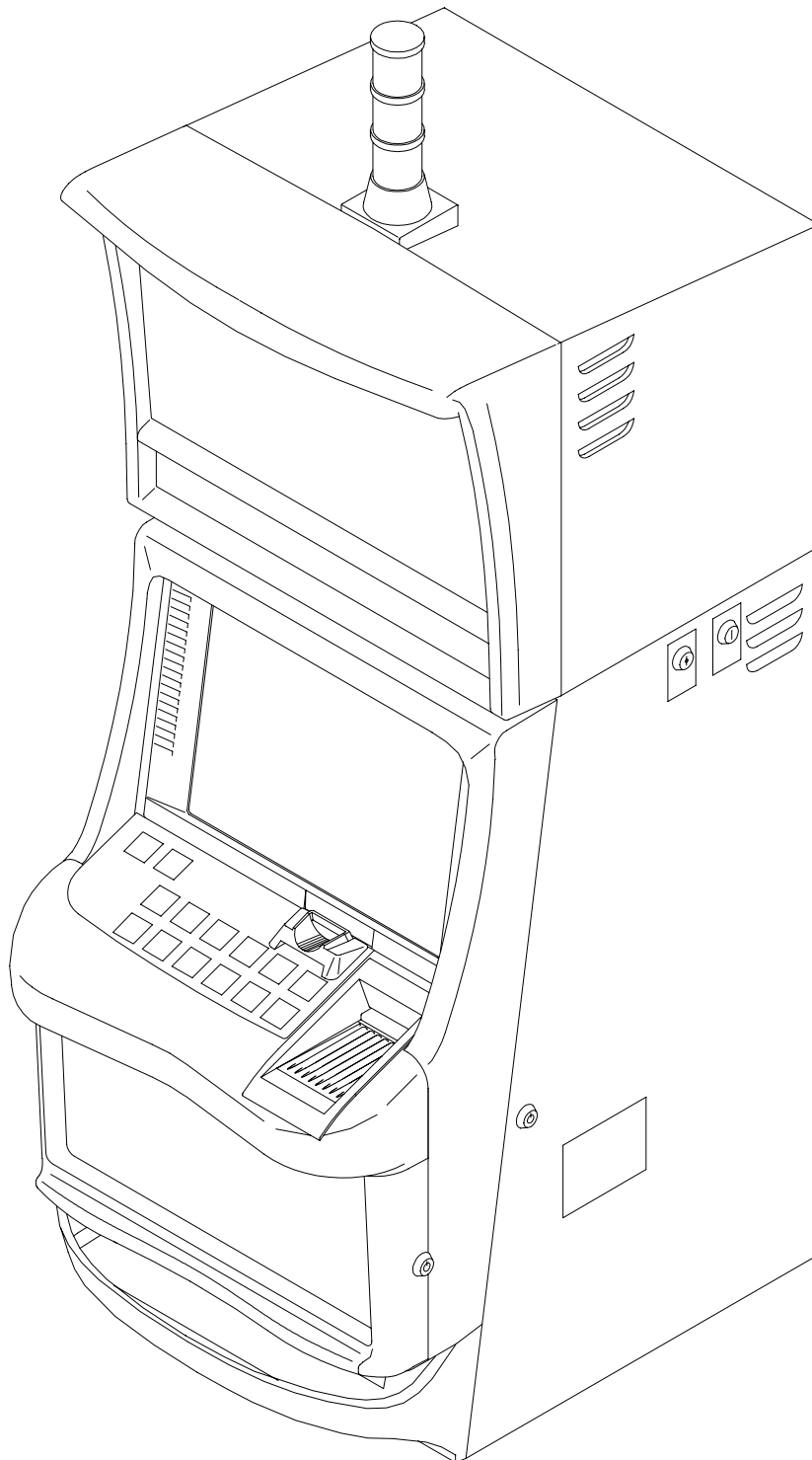


# Emax-UP00V

**ILLUSTRATED PARTS CATALOG**  
**VERSION 006**





# TABLE OF CONTENTS

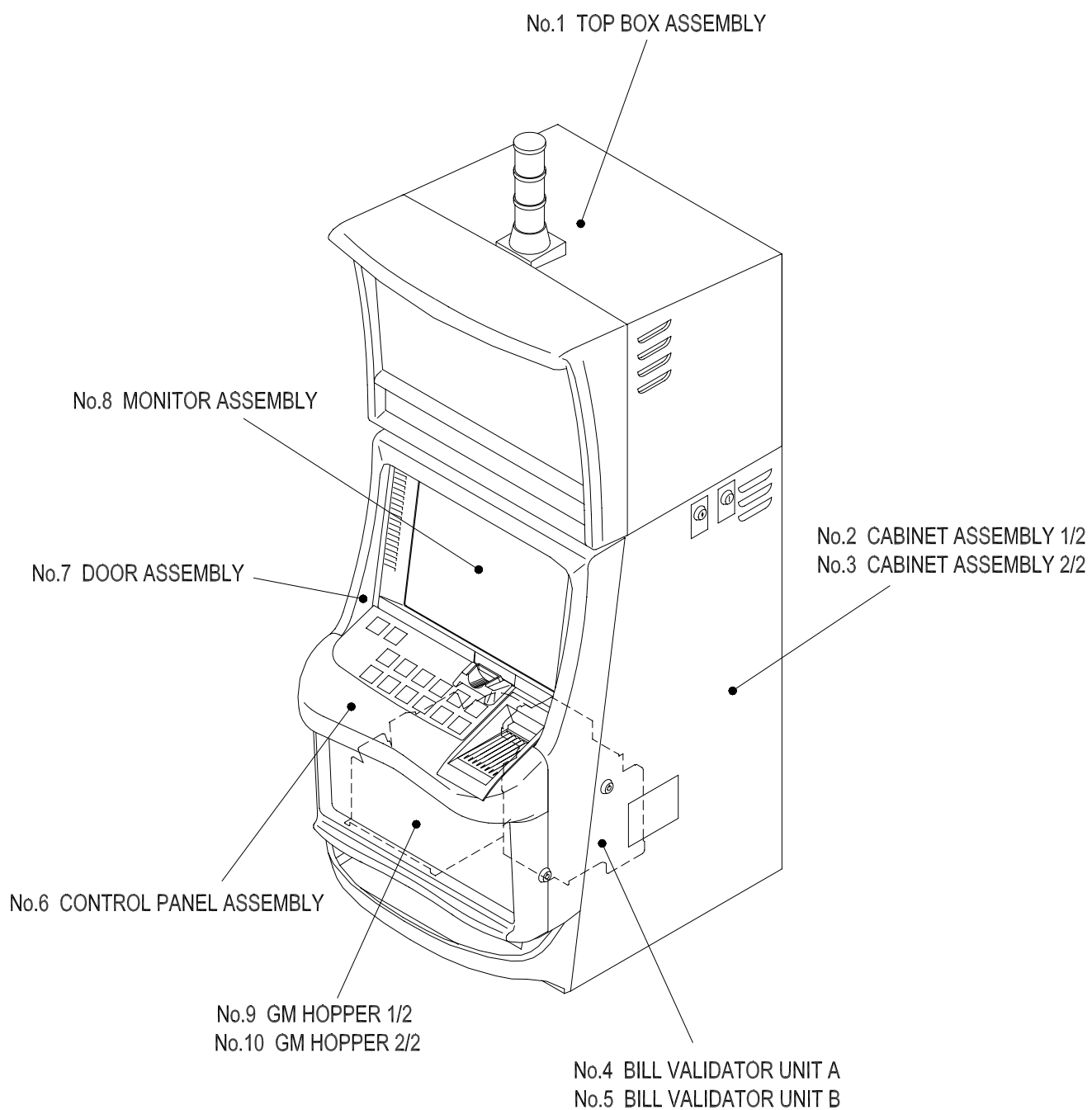
---

|                                    | PAGE |
|------------------------------------|------|
| MAJOR COMPONENTS.....              | 3    |
| No.1 TOP BOX ASSEMBLY .....        | 4    |
| No.2 CABINET ASSEMBLY 1/2 .....    | 8    |
| No.3 CABINET ASSEMBLY 2/2 .....    | 12   |
| No.4 BILL VALIDATOR UNIT A .....   | 16   |
| No.5 BILL VALIDATOR UNIT B .....   | 20   |
| No.6 CONTROL PANEL ASSEMBLY .....  | 24   |
| No.7 DOOR ASSEMBLY .....           | 28   |
| No.8 MONITOR ASSEMBLY .....        | 32   |
| No.9 GM HOPPER 1/2 .....           | 36   |
| No.10 GM HOPPER 2/2 .....          | 40   |
| DEFINITIONS OF FASTENER NAMES..... | 43   |

---

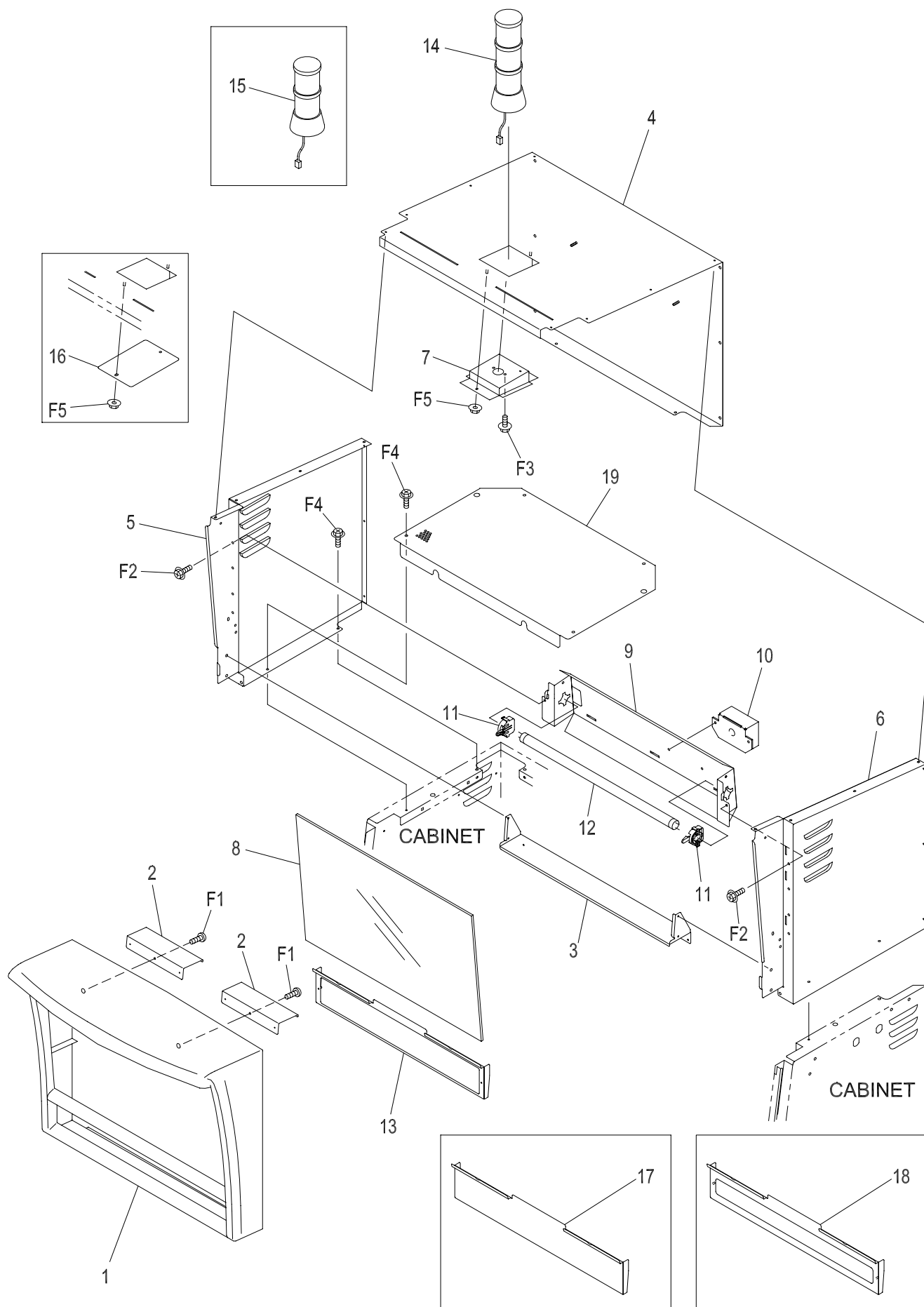


# MAJOR COMPONENTS



# No. 1

## TOP BOX ASSEMBLY



**TOP BOX ASSEMBLY (PARTS LIST)****No. 1**

| ITEM | PART NO.  | PARTS NAME             | Q'TY | MATERIAL/TYPE          | REMARKS                   |
|------|-----------|------------------------|------|------------------------|---------------------------|
| 1    | 2C0006801 | TOP DECORATION FRAME-B | 1    |                        | Varies according to spec. |
| 2    | 0C0014200 | TOP DECORATION HOOK    | 2    |                        |                           |
| 3    | 0C0014400 | TOP BOTTOM STAY        | 1    |                        |                           |
| 4    | 0C0014600 | TOP TOP BOARD-B        | 1    |                        |                           |
| 5    | 0C0014800 | TOP SIDE BOARD L-B     | 1    |                        |                           |
| 6    | 0C0015000 | TOP SIDE BOARD R-B     | 1    |                        |                           |
| 7    | 0C0015200 | TOP TOWER LIGHT BASE   | 1    |                        |                           |
| 8    |           | TOP GLASS MEASURE-B    | -    | 496-498x323-325(B-TOP) |                           |
| 9    | 0C0015600 | HEAD FL BKT            | 1    |                        |                           |
| 10   | 602416000 | FL DC INVERTER UNIT    | 1    | AN-151F                |                           |
| 11   | 602373200 | FL SOCKET UNIT         | 1    | UNV-09                 |                           |
| 12   | 602306000 | FL15W                  | 1    | FL 15W-B               | 95T-023                   |
| 13   | 0C0015800 | NAME STRIP (NORMAL)    | 1    |                        | Varies according to spec. |
| 14   | 609938900 | TOWER LIGHT            | (1)  | TWL3-24V-G/R/Y         | For Standard              |
| 14   | 609938300 | TOWER LIGHT            | (1)  | TWL3-24V-R/BL/W        | For New Zealand           |
| 15   | 609938700 | TOWER LIGHT            | (1)  | TWL2-24V-BL/W          | For South Africa          |
| 16   | 0C0020200 | TOP TOWER BLIND PLATE  | (1)  |                        |                           |
| 17   | 0C0017400 | NAME STRIP (BLIND)     | 1    |                        | Varies according to spec. |
| 18   | 0C0019600 | NAME STRIP (GRIPS)     | (1)  |                        | Varies according to spec. |
| 19   | 0C0020000 | TOP BOTTOM BOARD       | 1    |                        |                           |

No. 1

TOP BOX ASSEMBLY (FASTENER LIST)

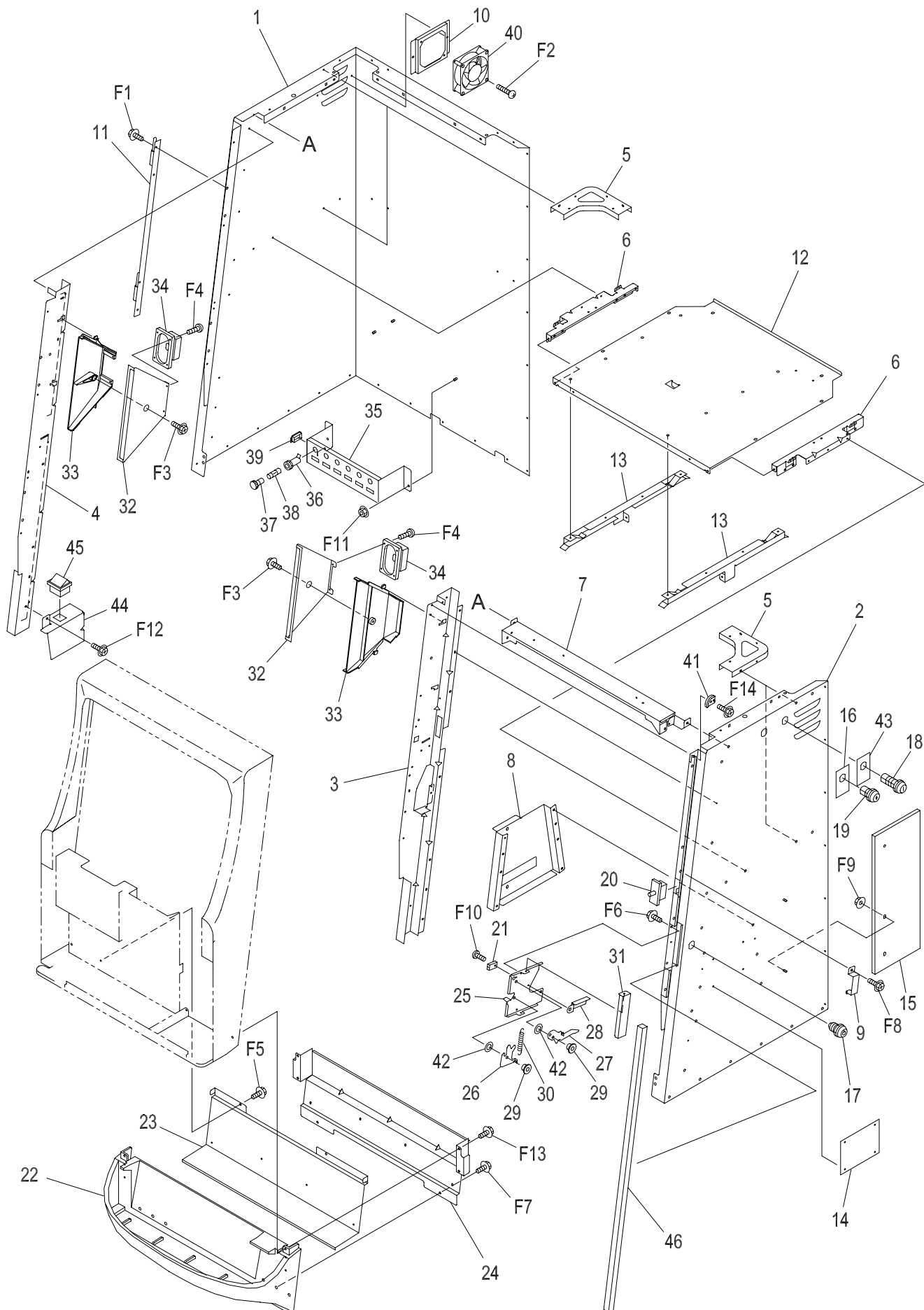
| ITEM | PART NO. | PARTS NAME        | Q'TY | MATERIAL/TYPE | REMARKS |
|------|----------|-------------------|------|---------------|---------|
| F1   |          | CRT(BH)-M4X10L-B  | 2    | M4X10L        |         |
| F2   |          | CRT(HHF)-M4X10L-S | 2    | M4X10L        |         |
| F3   |          | CRT(HHF)-M4X10L-S | 2    | M4X10L        |         |
| F4   |          | CRT(HHF)-M4X10L-S | 6    | M4X10L        |         |
| F5   |          | HN(F)-M4          | 2    | M4            |         |



# SERVICE MEMO

# No. 2

# CABINET ASSEMBLY 1/2



**CABINET ASSEMBLY 1/2 (PARTS LIST)****No. 2**

| ITEM | PART NO.  | PARTS NAME                  | Q'TY | MATERIAL/TYPE                 | REMARKS                   |
|------|-----------|-----------------------------|------|-------------------------------|---------------------------|
| 1    | 0C0005200 | CABINET SIDE MAIN           | 1    |                               |                           |
| 2    | 0C0005400 | CABINET SIDE SUB (PGL)      | 1    |                               |                           |
| 3    | 0C0005600 | CABINET STAY L              | 1    |                               |                           |
| 4    | 0C0005800 | CABINET STAY R              | 1    |                               |                           |
| 5    | 0C0006000 | CABINET STAY CORNER         | 4    |                               |                           |
| 6    | 0C0006200 | CABINET STAY SIDE           | 2    |                               |                           |
| 7    | 0C0006400 | CABINET STAY TOP            | 1    |                               |                           |
| 8    | 0C0006800 | CABINET BILL BKT            | 1    |                               |                           |
| 9    | 0C0007000 | CABINET SW COVER            | 1    |                               |                           |
| 10   | 0C0007200 | CABINET FAN BKT             | 1    |                               |                           |
| 11   | 0C0007400 | CABINET MAIN HINGE          | 1    |                               |                           |
| 12   | 0C0007600 | MIDDLE BOARD                | 1    |                               |                           |
| 13   | 0C0007800 | PCB BOX RAIL                | 2    |                               |                           |
| 14   | 0C0008000 | SERIAL PLATE (PGL)          | 1    |                               |                           |
| 15   | 1C0005200 | MOUNTING BOARD              | 1    |                               |                           |
| 16   | 2C00EAA00 | KEY SW LABEL                | 1    |                               |                           |
| 17   | 601306201 | SHORT DOOR LOCK (2155)      | 1    | GSK-501SB2155 (Key way: left) | 89T-140                   |
| 18   | 601356400 | KEY SW ASSY                 | 1    | KG3C-20D ASSY                 | For RESET/METER           |
| 19   | 601367000 | KEY SW ASSY                 | 1    | KH2C-10A ASSY                 | For POWER SAVE            |
| 20   | 600121000 | SAFETY DOOR SW              | 1    | E77-40A-001                   | 99T-016                   |
| 21   | 600290600 | PHOTO SENSOR                | 1    | KI875-AA02                    | Blue/yellow lead wire     |
| 22   | 2C0005401 | COIN TRAY BASE (PGL)        | 1    |                               | Varies according to spec. |
| 23   | 0C0010400 | COIN TRAY FRAME FRONT (PGL) | 1    |                               |                           |
| 24   | 0C0010600 | COIN TRAY FRAME REAR (PGL)  | 1    |                               |                           |
| 25   | 0C0010800 | MAIN LOCK BASE PLATE        | 1    |                               |                           |
| 26   | 0C0011000 | MAIN LOCK HOOK PLATE        | 1    |                               |                           |
| 27   | 0C0011200 | MAIN LOCK REMOVE PLATE      | 1    |                               |                           |
| 28   | 0C0011400 | MAIN LOCK KEY PLATE         | 1    |                               |                           |
| 29   | 0C0011600 | MAIN LOCK POST              | 2    |                               |                           |
| 30   | 0C0011800 | SPRING                      | 1    | E555                          |                           |
| 31   | 0C0016400 | MAIN LOCK COVER             | 1    |                               |                           |
| 32   | 0C0013400 | SPEAKER COVER               | 2    |                               |                           |
| 33   | 2C0006200 | SPEAKER HORN                | 2    |                               |                           |
| 34   | 601127200 | SPEAKER                     | 2    | 369354                        |                           |
| 35   | 0C0014000 | COMMUNICATION POWER BKT     | 1    |                               | For Australia             |

## No. 2 CABINET ASSEMBLY 1/2 (PARTS LIST)

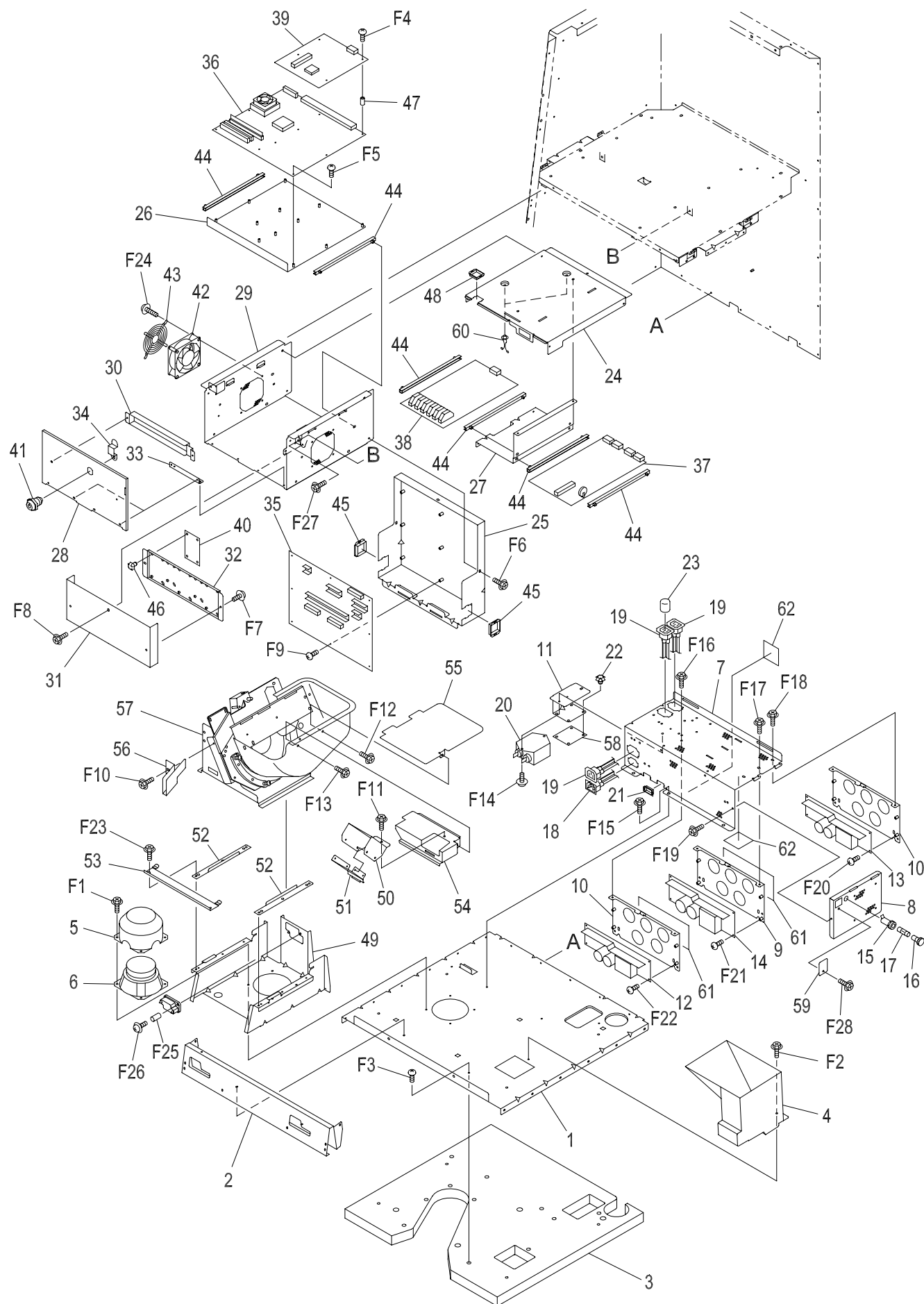
| ITEM | PART NO.  | PARTS NAME          | Q'TY | MATERIAL/TYPE | REMARKS       |
|------|-----------|---------------------|------|---------------|---------------|
| 36   | 601515000 | FUSE HOLDER         | 6    | 3453LF2-010   | For Australia |
| 37   | 601515400 | FUSE HOLDER KNOB    | 6    | 3455LF1-020   | For Australia |
| 38   | 601575000 | MINI FUSE 0.5A      | 6    |               | For Australia |
| 39   | 810338100 | EDGING SADDLE       | 1    | TSB-1909L     | For Australia |
| 40   | 609949200 | DC FAN FOR PCB      | 1    | 109R0812H 445 |               |
| 41   | 2C0007400 | DOOR GUIDE          | 1    |               |               |
| 42   | 2C0005600 | RESIN WASHER        | 2    | CC-0612-05    |               |
| 43   | 2C00EAC00 | POWER SAVE SW LABEL | 1    |               |               |
| 44   | 0C0017800 | POWER MAIN SW BKT   | 1    |               |               |
| 45   | 601515000 | ROCKER SWITCH       | 1    | SG-W115A-07BB |               |
| 46   | 2C0007600 | SHIELDING GASKET    | 1    | STG4-5L880    |               |

## No. 2 CABINET ASSEMBLY 1/2 (FASTENER LIST)

| ITEM | PART NO. | PARTS NAME        | Q'TY | MATERIAL/TYPE | REMARKS |
|------|----------|-------------------|------|---------------|---------|
| F1   |          | CRT(HHF)-M4X12L-S | 4    | M4X12L        |         |
| F2   |          | CR(PH)-M4X35L-3P  | 2    | M4X35L        |         |
| F3   |          | CRT(HHF)-M4X10L-S | 2    | M4X10L        |         |
| F4   |          | CRT(PH)-M3X12L-B  | 4    | M3X12L        |         |
| F5   |          | CR(PH)-M4X12L-3P  | 2    | M4X12L        |         |
| F6   |          | CRT(HHF)-M4X10L-S | 3    | M4X10L        |         |
| F7   |          | CRT(HHF)-M4X8L-S  | 4    | M4X8L         |         |
| F8   |          | CRT(HHF)-M4X10L-S | 1    | M4X10L        |         |
| F9   |          | HN(F)-M4          | 2    | M4            |         |
| F10  |          | CR(BH)-M3X8L      | 1    | M3X8L         |         |
| F11  |          | HN(F)-M4          | 2    | M4            |         |
| F12  |          | CRT(HHF)-M4X12L-S | 1    | M4X12L        |         |
| F13  |          | CR(PH)-M4X12L-3P  | 2    | M4X12L        |         |
| F14  |          | CRT(HHF)-M4X10L-S | 1    | M4X10L        |         |

# No. 3

# CABINET ASSEMBLY 2/2



**CABINET ASSEMBLY 2/2 (PARTS LIST)****No. 3**

| ITEM | PART NO.  | PARTS NAME                   | Q'TY | MATERIAL/TYPE | REMARKS |
|------|-----------|------------------------------|------|---------------|---------|
| 1    | 0C0005000 | CABINET BASE (PGL)           | 1    |               |         |
| 2    | 0C0006600 | CABINET STAY BOTTOM          | 1    |               |         |
| 3    | 1C0005000 | CABINET BASE BOARD (PGL)     | 1    |               |         |
| 4    | 2C0005000 | CASHBOX CHUTE (PGL)          | 1    |               |         |
| 5    | 2C0005200 | WOOFER COVER                 | 1    |               |         |
| 6    | 601129000 | WOOFER SPEAKER               | 1    | 369355        |         |
| 7    | 0C0505000 | POWER CASE                   | 1    |               |         |
| 8    | 0C0505200 | POWER FRONT                  | 1    |               |         |
| 9    | 0C0505400 | POWER SW REG BKT 150         | 1    |               |         |
| 10   | 0C0505600 | POWER SW REG BKT 100         | 2    |               |         |
| 11   | 0C0505800 | POWER SAVE PCB BKT           | 1    |               |         |
| 12   | 602631200 | SWITCHING REGULATOR 5V       | 1    | ZWS100AF-5/J  |         |
| 13   | 602631400 | SWITCHING REGULATOR 12V      | 1    | ZWS100AF-12/J |         |
| 14   | 602631600 | SWITCHING REGULATOR 24V      | 1    | ZWS150AF-24/J |         |
| 15   | 601515000 | FUSE HOLDER                  | 1    | 3453LF2-010   |         |
| 16   | 601515400 | FUSE HOLDER KNOB             | 1    | 3455LF1-020   |         |
| 17   | 601574400 | MINI FUSE 6.3A               | 1    |               |         |
| 18   | 609946000 | INLET                        | 1    | S-170         |         |
| 19   | 601403200 | OUTLET                       | 3    | AC-FO1FB01    |         |
| 20   | 601223000 | NOISE FILTER                 | 1    | ZHG2206-11S   |         |
| 21   | 810338100 | EDGING SADDLE                | 2    | TSB-1909L     |         |
| 22   | 810209600 | LOCKING CAP SPACER           | 4    | LCS-6S        |         |
| 23   | 2C0505000 | OUTLET COVER                 | 1    | VCP-20        |         |
| 24   | 0C0008200 | PCB TOP (DPX-80)             | 1    |               |         |
| 25   | 0C0008400 | MOTHER PCB TRAY (DPX-80)     | 1    |               |         |
| 26   | 0C0008600 | MAIN PCB TRAY (DPX-80)       | 1    |               |         |
| 27   | 0C0008800 | PCB RAIL GUIDE BKT (DPX-80)  | 1    |               |         |
| 28   | 0C0009000 | PCB DOOR (DPX-80)            | 1    |               |         |
| 29   | 0C0009200 | PCB CASE (DPX-80)            | 1    |               |         |
| 30   | 0C0009400 | PCB DOOR PUSHER BKT (DPX-80) | 1    |               |         |
| 31   | 0C0009600 | CONNECTOR COVER (DPX-80)     | 1    |               |         |
| 32   | 0C0009800 | SUB PCB TRAY (DPX-80)        | 1    |               |         |
| 33   | -         | PCB DOOR HINGE               | 2    |               |         |
| 34   | 0C0010200 | PCB DOOR KEY PLATE           | 1    |               |         |
| 35   | CC0010A00 | BACK PLANE BOARD PCB         | 1    | 4PA0604-0.1   |         |

# No. 3 CABINET ASSEMBLY 2/2 (PARTS LIST)

| ITEM | PART NO.  | PARTS NAME                  | Q'TY | MATERIAL/TYPE   | REMARKS |
|------|-----------|-----------------------------|------|-----------------|---------|
| 36   | CC0012A00 | DPX80 (PGL) PCB             | 1    | DPX80 (PGL)     |         |
| 37   | CC0014A00 | IO BOARD PCB                | 1    | 4PA0603-2       |         |
| 38   | CC0016A00 | NSW COMMUNICATION BOARD PCB | 1    | 4PA0605-2       |         |
| 39   | CC0018A00 | MEMORY BOARD PCB            | 1    | 4PA0602-4       |         |
| 40   | CC0020A00 | D-AMP PCB                   | 1    | UW0049-7        |         |
| 41   | 601306207 | SHORT DOOR LOCK             | 1    | F750-MSD (1963) |         |
| 42   | 609949200 | DC FAN FOR PCB              | 1    | 109R0812H 445   |         |
| 43   | 600894600 | FINGER GUARD AGAINST FAN    | 1    | 109-049C        |         |
| 44   | 2AZ005000 | GUIDE RAIL                  | 6    | GRT-200         |         |
| 45   | 810338200 | EDGING SADDLE               | 2    | TSB-3027        |         |
| 46   | 810209600 | LOCKING CAP SPACER          | 4    | LCS-6S          |         |
| 47   | 0C0016800 | SPACER                      | 4    | BSB-317         |         |
| 48   | 810338000 | EDGING SADDLE               | 1    | TSB-1915        |         |
| 49   | 0C0305000 | GM HOPPER RAIL BASE         | 1    |                 |         |
| 50   | 0C0305200 | GM HOPPER CHUTE BKT         | 1    |                 |         |
| 51   | 0C0305400 | GM HOPPER CHUTE             | 1    |                 |         |
| 52   | 0C0305600 | GM HOPPER RAIL              | 2    |                 |         |
| 53   | 0C0305800 | GM HOPPER SHIPPING BKT      | 1    |                 |         |
| 54   | 0C0306000 | GM HOPPER CHUTE BASE        | 1    |                 |         |
| 55   | 0C0306200 | GM HOPPER COVER             | 1    |                 |         |
| 56   | 0C0308000 | ATTACHMENT CHUTE            | 1    |                 |         |
| 57   |           | GM HOPPER UNIT              | 1    |                 |         |
| 58   | CC0510A00 | POWER SAVE PCB              | 1    | UW0049-9        |         |
| 59   | 0C0506000 | POWER SW HOLE COVER         | 1    |                 |         |
| 60   | 810316200 | EYE LOCK                    | 2    | ELC-1007        |         |
| 61   | 2C0505200 | POWER INSULATION SEAT A     | 2    |                 |         |
| 62   | 2C0505400 | POWER INSULATION SEAT B     | 2    |                 |         |

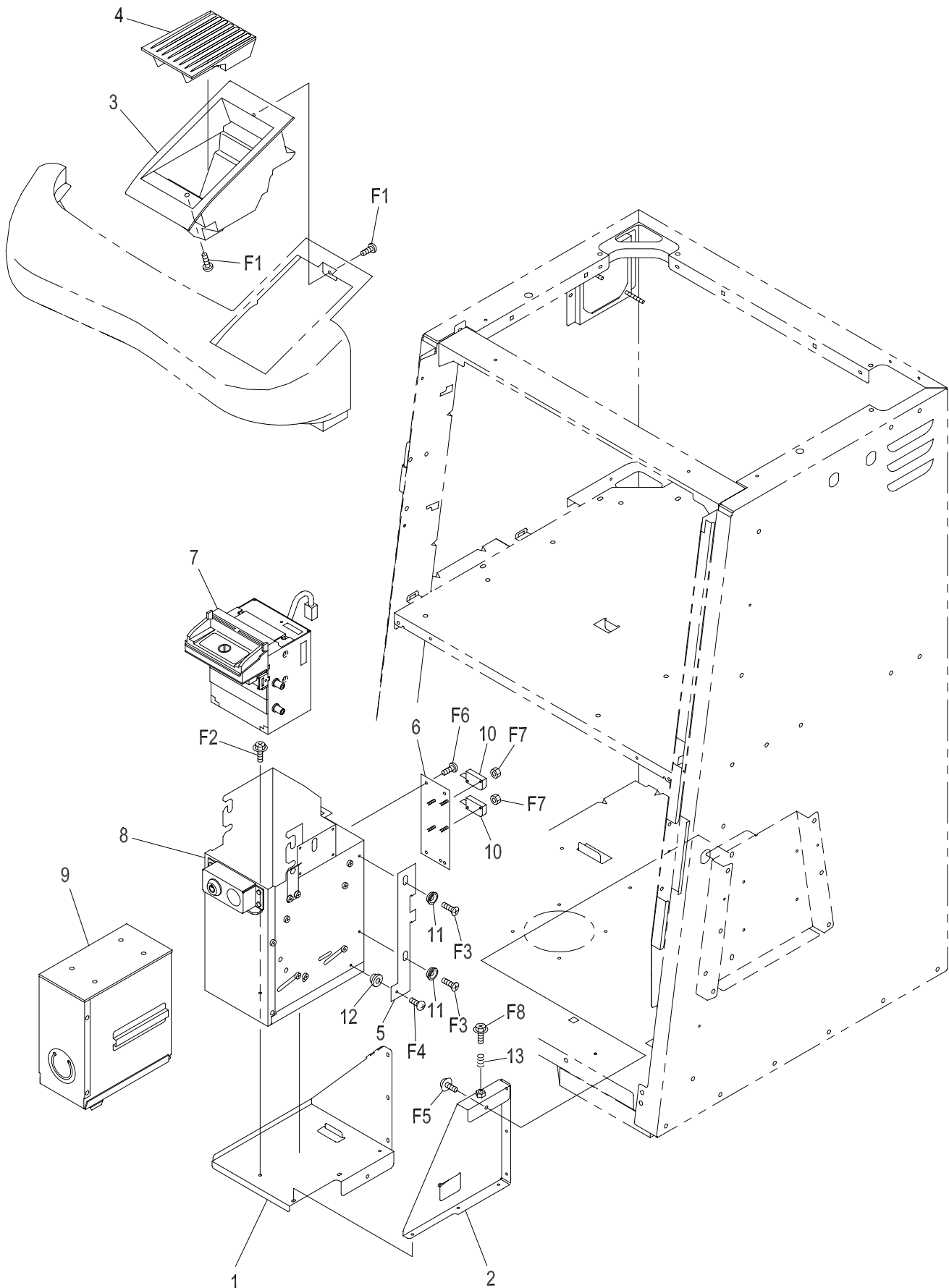


## No. 3 CABINET ASSEMBLY 2/2 (FASTENER LIST)

| ITEM | PART NO. | PARTS NAME             | Q'TY | MATERIAL/TYPE | REMARKS |
|------|----------|------------------------|------|---------------|---------|
| F1   |          | CRT(HHF)-M4X12L-S      | 4    | M4X12L        |         |
| F2   |          | CRT(HHF)-M4X12L-S      | 1    | M4X12L        |         |
| F3   |          | CR(PH)-M5X16L-3P       | 4    | M5X16L        |         |
| F4   |          | CR(BH)-M3X8L           | 4    | M3X8L         |         |
| F5   |          | CR(BH)-M3X8L           | 8    | M3X8L         |         |
| F6   |          | CRT(HHF)-M4X10L-S      | 3    | M4X10L        |         |
| F7   |          | CRT(HHF)-M4X10L-S      | 2    | M4X10L        |         |
| F8   |          | CRT(HHF)-M4X10L-S      | 1    | M4X10L        |         |
| F9   |          | CR(BH)-M3X8L           | 9    | M3X8L         |         |
| F10  |          | CRT(HHF)-M4X10L-S      | 1    | M4X10L        |         |
| F11  |          | CRT(HHF)-M4X10L-S      | 1    | M4X10L        |         |
| F12  |          | CR(PH)-M4X12L-3P       | 1    | M4X12L        |         |
| F13  |          | CRT(HHF)-M4X12L-S      | 1    | M4X12L        |         |
| F14  |          | CRT(HHF)-M4X10L-S      | 2    | M4X10L        |         |
| F15  |          | CRT(HHF)-M4X12L-S      | 3    | M4X12L        |         |
| F16  |          | CRT(HHF)-M4X10L-S      | 2    | M4X10L        |         |
| F17  |          | CRT(HHF)-M4X10L-S      | 2    | M4X10L        |         |
| F18  |          | CRT(HHF)-M4X10L-S      | 2    | M4X10L        |         |
| F19  |          | CRT(HHF)-M4X10L-S      | 1    | M4X10L        |         |
| F20  |          | CR(PH)-M3X8L-3P        | 4    | M3X8L         |         |
| F21  |          | CR(PH)-M3X8L-3P        | 4    | M3X8L         |         |
| F22  |          | CR(PH)-M3X8L-3P        | 4    | M3X8L         |         |
| F23  |          | CR(PH)-M4X8L-3P        | 2    | M4X8L         |         |
| F24  |          | CR(PH)-M4X35L-3P       | 4    | M4X35L        |         |
| F25  |          | SPACER (3382309-50120) | 2    | 3382309-50120 |         |
| F26  |          | CR(PH)-M5X20L-3P       | 2    | M5X20L        |         |
| F27  |          | CRT(HHF)-M4X10L-S      | 2    | M4X10         |         |
| F28  |          | CRT(HHF)-M4X10L-S      | 1    | M4X10         |         |

# No. 4

## BILL VALIDATOR UNIT A



**BILL VALIDATOR UNIT A (PARTS LIST)****No. 4**

| ITEM | PART NO.  | PARTS NAME                  | Q'TY | MATERIAL/TYPE | REMARKS   |
|------|-----------|-----------------------------|------|---------------|---|
| 1    | 0C0013600 | BILL BKT BASE GPT (B.B)     | 1    |               |   |
| 2    | 0C0013800 | BILL BKT SIDE GPT (B.B)     | 1    |               |   |
| 3    | 2C0006400 | BILL ENTRY BASE GPT         | 1    |               |   |
| 4    | 2C0006600 | BILL ENTRY TRAY GPT         | 1    |               |   |
| 5    | 0C0016000 | ARGUS SW BKT (B.B)          | 1    |               | Packing according to actual place installation. |
| 6    | 0C0016200 | ARGUS SW BASE               | 1    |               | Packing according to actual place installation. |
| 7    |           | BILL VALIDATOR HEAD ARGUS-D | 0(1) | 300G111121    | Act area distinction choice.                    |
| 8    |           | ENCLOSURE                   | 0(1) | 300D0350-2    |   |
| 9    |           | STACKER                     | 0(1) | SRC-01        |   |
| 10   | 600134000 | MICRO SW                    | 2    | D2MV-01L-1C3  | Packing according to actual place installation. |
| 11   | 0C0017000 | ARGUS SW BKT COLLAR         | 2    |               | Packing according to actual place installation. |
| 12   | 0C0017200 | ARGUS SW BKT SPACER         | 1    |               | Packing according to actual place installation. |
| 13   | 0C0019800 | SPRING                      | 1    | C210          |   |

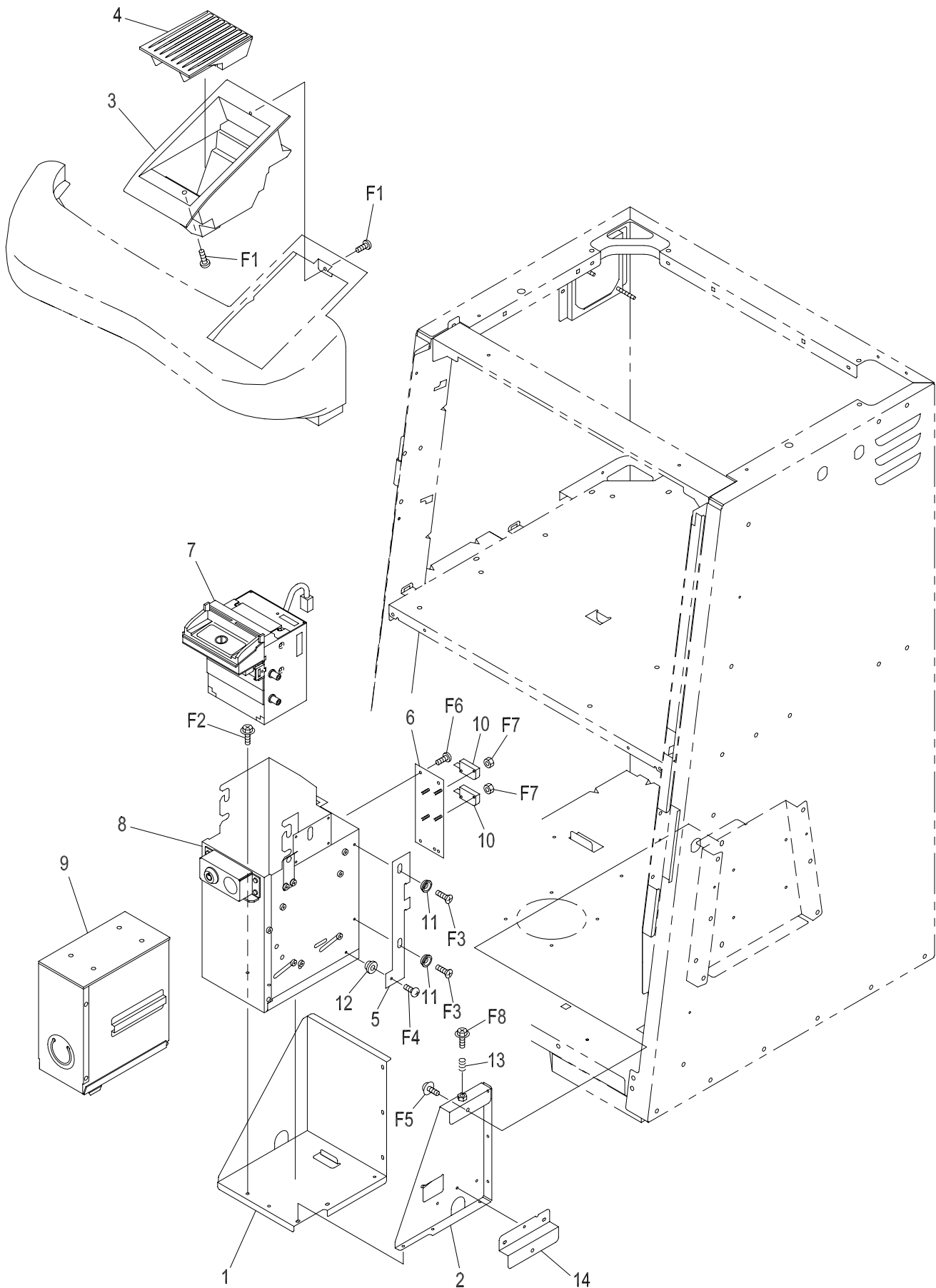
BILL VALIDATOR UNIT A (FASTENER LIST) No. 4

| ITEM | PART NO. | PARTS NAME              | Q'TY | MATERIAL/TYPE   | REMARKS |
|------|----------|-------------------------|------|-----------------|---------|
| F1   |          | CRT(BH)-M4X10L-B        | 2    | M4X10L          |         |
| F2   |          | CRT(HHF)-M4X10L-S       | 2    | M4X10L          |         |
| F3   |          | CR(FH)-M3X8L            | 2    | M3X8L           |         |
| F4   |          | CRU(PH)-No.6-32X(3/8)L  | 1    | No.6-32X(3/8)L  |         |
| F5   |          | CR(PH)-M5X10L-3P        | 2    | M5X10L          |         |
| F6   |          | CRU(PH)-No.4-40X(3/16)L | 4    | No.4-40X(3/16)L |         |
| F7   |          | HN(F)-M3                | 4    | M3              |         |
| F8   |          | HSC(F)-M6X15L           | 1    | M6X15L          |         |

# SERVICE MEMO

# No. 5

## BILL VALIDATOR UNIT B



**BILL VALIDATOR UNIT B (PARTS LIST)****No. 5**

| ITEM | PART NO.  | PARTS NAME                  | Q'TY | MATERIAL/TYPE | REMARKS   |
|------|-----------|-----------------------------|------|---------------|---|
| 1    | 0C0018000 | BILL BKT BASE GPT (S.B.B)   | 1    |               |   |
| 2    | 0C0018200 | BILL BKT SIDE GPT (S.B.B)   | 1    |               |   |
| 3    | 2C0006400 | BILL ENTRY BASE GPT         | 1    |               |   |
| 4    | 2C0006600 | BILL ENTRY TRAY GPT         | 1    |               |   |
| 5    | 0C0018600 | ARGUS SW BKT (S.B.B)        | 1    |               | Packing according to actual place installation. |
| 6    | 0C0016200 | ARGUS SW BASE               | 1    |               | Packing according to actual place installation. |
| 7    |           | BILL VALIDATOR HEAD ARGUS-D | 0(1) | 300G112121    | Act area distinction choice.                    |
| 8    |           | ENCLOSURE                   | 0(1) | 300D0351-2    |   |
| 9    |           | STACKER                     | 0(1) | SRC-U07       |   |
| 10   | 600134000 | MICRO SW                    | 2    | D2MV-01L-1C3  | Packing according to actual place installation. |
| 11   | 0C0017000 | ARGUS SW BKT COLLAR         | 2    |               | Packing according to actual place installation. |
| 12   | 0C0017200 | ARGUS SW BKT SPACER         | 1    |               | Packing according to actual place installation. |
| 13   | 0C0019800 | SPRING                      | 1    |               |   |
| 14   | 0C0019800 | BILL BKT HOOK GPT (S.B.B)   | 1    |               |   |

BILL VALIDATOR UNIT B (FASTENER LIST) No. 5

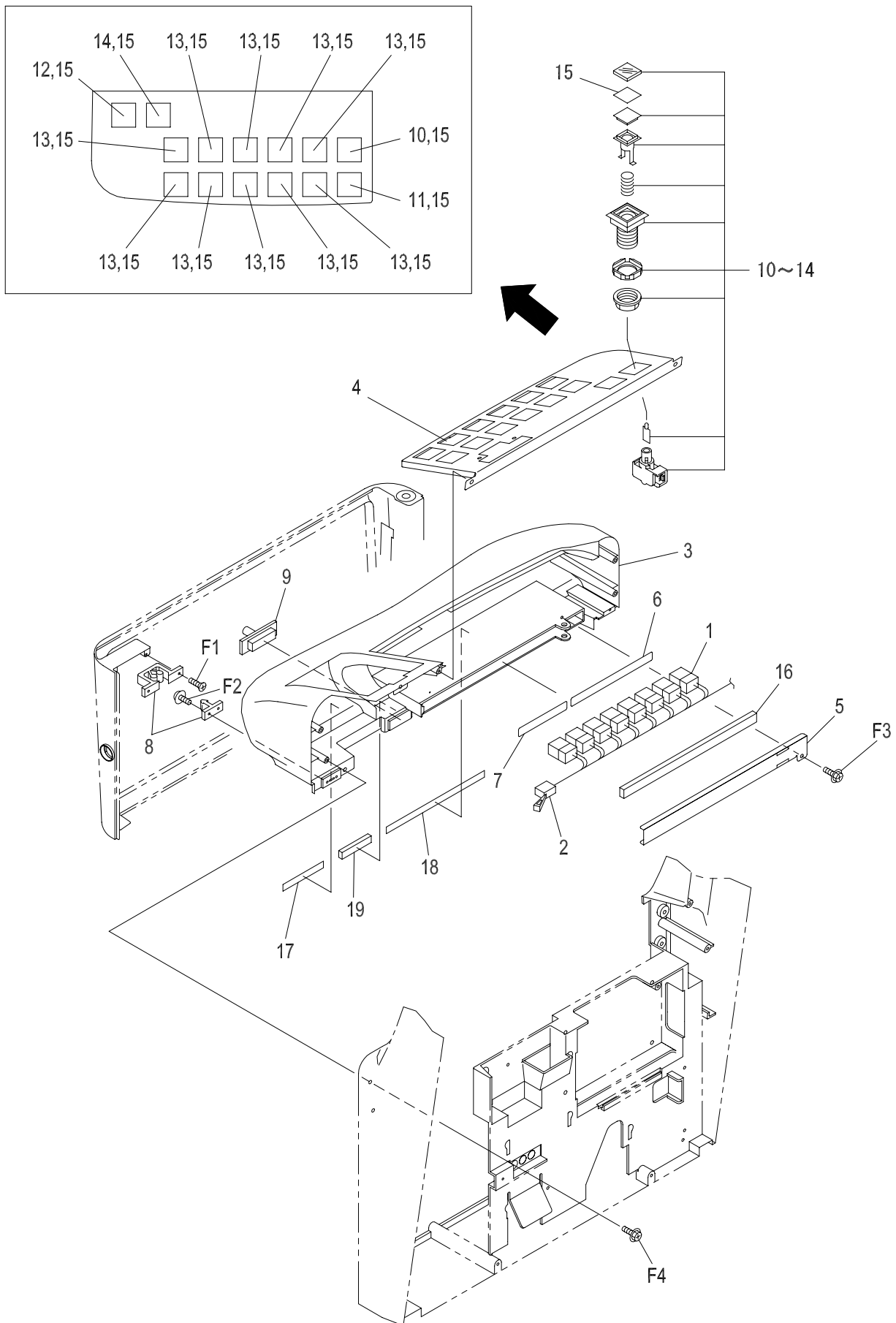
| ITEM | PART NO. | PARTS NAME              | Q'TY | MATERIAL/TYPE   | REMARKS |
|------|----------|-------------------------|------|-----------------|---------|
| F1   |          | CRT(BH)-M4X10L-B        | 2    | M4X10L          |         |
| F2   |          | CRT(HHF)-M4X10L-S       | 3    | M4X10L          |         |
| F3   |          | CR(FH)-M3X8L            | 2    | M3X8L           |         |
| F4   |          | CRU(PH)-No.6-32X(3/8)L  | 1    | No.6-32X(3/8)L  |         |
| F5   |          | CR(PH)-M5X10L-3P        | 2    | M5X10L          |         |
| F6   |          | CRU(PH)-No.4-40X(3/16)L | 4    | No.4-40X(3/16)L |         |
| F7   |          | HN(F)-M3                | 4    | M3              |         |
| F8   |          | HSC(F)-M6X15L           | 1    | M6X15L          |         |



# SERVICE MEMO

# No. 6

# CONTROL PANEL ASSEMBLY



# CONTROL PANEL ASSEMBLY (PARTS LIST) No. 6

| ITEM | PART NO.  | PARTS NAME                                 | Q'TY | MATERIAL/TYPE                            | REMARKS                   |
|------|-----------|--|------|--|---------------------------|
| 1    | 601622000 | COUNTER ASSEMBLY (CONSISTING OF 8 COUNTER) | 1    | GC-247BA-8L950                           |                           |
| 2    | 600135000 | COUNTER COVER DETECTION SWITCH             | 1    | D3K-B                                    |                           |
| 3    | 0C0105601 | CONTROL PANEL BASE                         | 1    |  | Varies according to spec. |
| 4    | 0C0105800 | CONTROL PANEL VIDEO                        | 1    |  |                           |
| 5    | 0C0106000 | COUNTER COVER                              | 1    |  |                           |
| 6    | 2C0105200 | COUNTER LENS 5 (PGL)                       | 1    |  |                           |
| 7    | 2C0105400 | COUNTER LENS 3 (PGL)                       | 1    |  |                           |
| 8    | 2C0105600 | ROTARY BUILT-IN CATCH                      | 1    | RCU                                      |                           |
| 9    | 600121000 | SAFETY DOOR SW                             | 1    | E77-40A-001                              | 99T-016                   |
| 10   | 600367600 | YELLOW LED PUSH BUTTON                     | 1    | OBSA-30UK-Y-AR013                        |                           |
| 11   | 600367400 | GREEN LED PUSH BUTTON                      | 1    | OBSA-30UK-G-AR014                        |                           |
| 12   | 600367200 | BLUE LED PUSH BUTTON                       | 1    | OBSA-30UK-B-AR015                        |                           |
| 13   | 600367000 | WHITE LED PUSH BUTTON                      | 10   | OBSA-30UK-W-AR016                        |                           |
| 14   | 600367800 | PURPLE LED PUSH BUTTON                     | 1    | OBSA-30UK-PUR/W-AR017                    |                           |
| 15   |           | BUTTON SHEET                               |      |  |                           |
| 16   | 2ZZZ71000 | SPONGE FOR COUNTER                         | 1    | 8 (width) x 7 (thickness) x 230 (length) |                           |
| 17   | 2ZZZ10500 | SPONGE FOR GLASS PRESSER                   | 1    | 5 (width) x 1 (thickness) x 80 (length)  |                           |
| 18   | 2ZZZ10700 | SPONGE FOR GLASS PRESSER                   | 1    | 5 (width) x 1 (thickness) x 280 (length) |                           |
| 19   | 2ZZZ55100 | SPONGE FOR BLIND                           | 1    | 5 (width) x 5 (thickness) x 50 (length)  |                           |

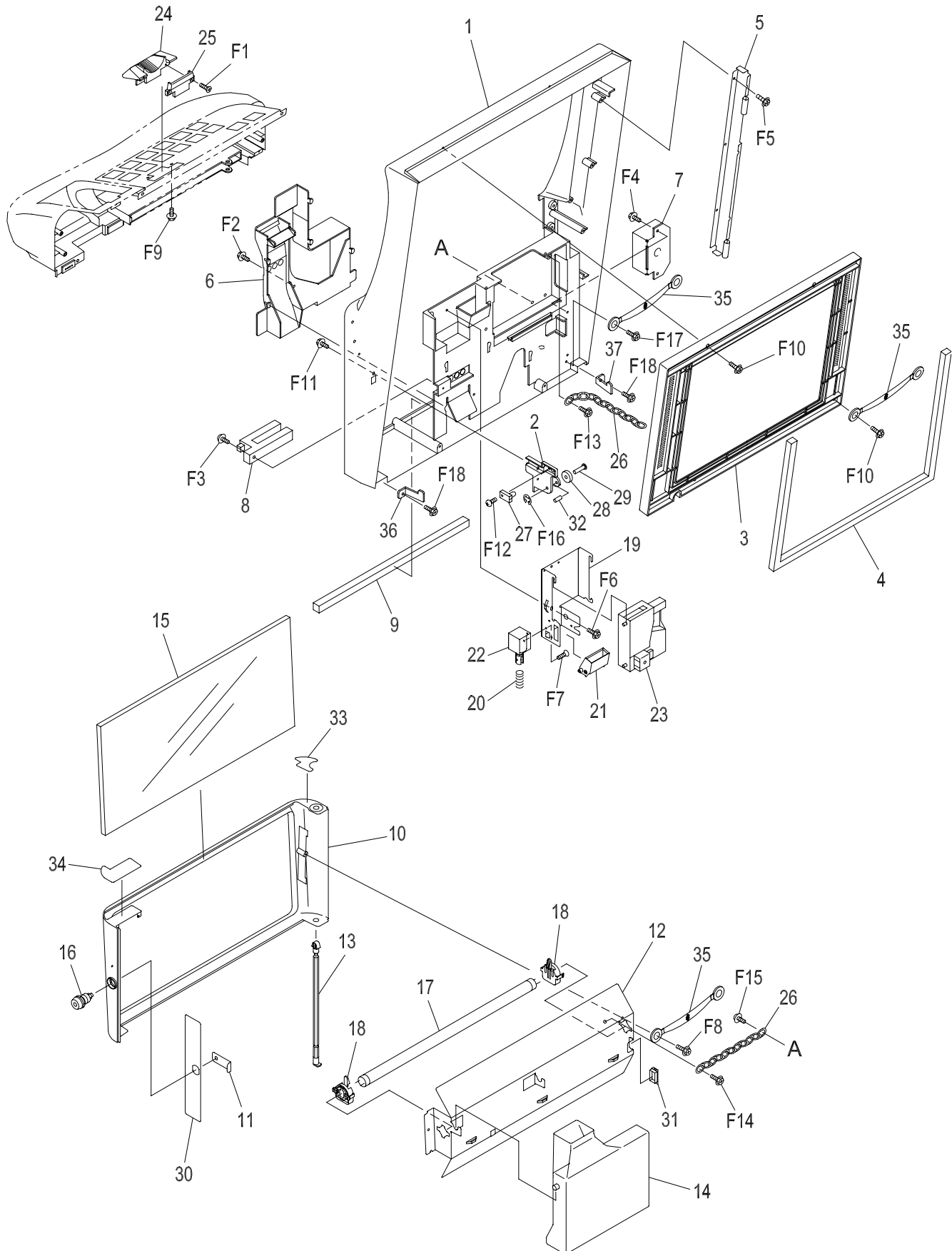
CONTROL PANEL ASSEMBLY (FASTENER LIST) No. 6

| ITEM | PART NO. | PARTS NAME        | Q'TY | MATERIAL/TYPE | REMARKS |
|------|----------|-------------------|------|---------------|---------|
| F1   |          | CR(FH)-M3X6L      | 2    | M3X6L         |         |
| F2   |          | CR(PH)-M3X6L      | 2    | M3X6L         |         |
| F3   |          | CRT(HHF)-M4X12L-S | 1    | M4X12L        |         |
| F4   |          | CRT(HHF)-M4X12L-S | 4    | M4X12L        |         |

# SERVICE MEMO

# No. 7

## DOOR ASSEMBLY



## DOOR ASSEMBLY (PARTS LIST)

## No. 7

| ITEM | PART NO.  | PARTS NAME                | Q'TY | MATERIAL/TYPE                             | REMARKS                   |
|------|-----------|---------------------------|------|---|---------------------------|
| 1    | 0C0105001 | MAIN DOOR BASE            | 1    |   | Varies according to spec. |
| 2    | 0C0105200 | MAIN DOOR LOCK SHAFT BASE | 1    |   |                           |
| 3    | 2C0005800 | MONITOR MASK 19           | 1    |   |                           |
| 4    | 2ZZZ95500 | SPONGE                    | 1    | 10 (width) x 5 (thickness) x 980 (length) |                           |
| 5    | 0C0105400 | MAIN HINGE DOOR           | 1    |   |                           |
| 6    | 2C0105000 | CANCEL CHUTE              | 1    |   |                           |
| 7    | 602416000 | FL DC INVERTER UNIT       | 1    | AN-151F                                   |                           |
| 8    | 600205001 | PHOTO SENSOR              | 1    | U-97PA                                    |                           |
| 9    | 2ZZZ10600 | SPONGE FOR GLASS PRESSER  | 2    | 5 (width) x 1 (thickness) x 370 (length)  |                           |
| 10   | 0C0106201 | BOTTOM GLASS CASE         | 1    |   | Varies according to spec. |
| 11   | 0C0106400 | BOTTOM KEY PLATE          | 1    |   |                           |
| 12   | 0C0106600 | BOTTOM FL BKT             | 1    |   |                           |
| 13   | 2C0105800 | BOTTOM HINGE BAR          | 1    |   |                           |
| 14   | 2C0106000 | BOTTOM DRAIN BOTTLE       | 1    |   |                           |
| 15   |           | BOTTOM GLASS MEASURE      | -    | 273 ~ 275 x 233 ~ 235                     |                           |
| 16   | 601306201 | SHORT DOOR LOCK (2155)    | 1    | GSK-501SB2155 (Key way: left)             | 89T-140                   |
| 17   | 602306000 | FL15W                     | 1    | FL 15W-B                                  | 95T-023                   |
| 18   | 602373200 | FL SOCKET UNIT            | 1    | UNV-09                                    |                           |
| 19   | 0C0106800 | DIVERTOR BKT              | 1    |   |                           |
| 20   | 0A0120400 | SOLENOID SPRING           | 1    |   |                           |
| 21   | 2C0106200 | DIVERTOR CHUTE            | 1    |   |                           |
| 22   | 600434200 | SOLENOID                  | 1    | G-836-AR32                                |                           |
| 23   | 600914400 | COMPARATOR (MC40)         | (1)  | MC-40 (66460025)                          | Varies according to spec. |
| 23   | 600923400 | COMPARATOR (CP130 CONDOR) | (1)  | CP130                                     | Varies according to spec. |
| 23   | 600914600 | COMPARATOR (MC62)         | (1)  | MC-62-D (66460107)                        | Varies according to spec. |
| 23   | 600923000 | COMPARATOR (CP133 CONDOR) | (1)  | CP133                                     | Varies according to spec. |
| 24   | 0C0107000 | COIN ENTRY BASE           | 1    |   |                           |
| 25   | 0A010641  | COIN ENTRY B              | 1    |   |                           |
| 25   | 0A010641B | COIN ENTRY B              | 1    |   |                           |
| 25   | 0A010641D | COIN ENTRY B              | 1    |   |                           |
| 25   | 0A010641H | COIN ENTRY B              | 1    |   |                           |
| 25   | 0A010642E | COIN ENTRY B              | 1    |   |                           |
| 25   | 0A01064ET | COIN ENTRY B              | 1    |   |                           |
| 25   | 0A01064ET | COIN ENTRY B              | 1    |   |                           |
| 25   | 0A011381F | COIN ENTRY C              | 1    |   |                           |

**No. 7****DOOR ASSEMBLY (PARTS LIST)**

| ITEM | PART NO.  | PARTS NAME             | Q'TY | MATERIAL/TYPE         | REMARKS             |
|------|-----------|------------------------|------|-----------------------|---------------------|
| 25   | 0A011381N | COIN ENTRY C           | 1    |                       |                     |
| 25   | 0A011381R | COIN ENTRY C           | 1    |                       |                     |
| 25   | 0A01138S8 | COIN ENTRY C           | 1    |                       |                     |
| 25   | 0A01138FK | COIN ENTRY C           | 1    |                       |                     |
| 25   | 0A011381Z | COIN ENTRY C           | 1    |                       |                     |
| 25   | 0A0113810 | COIN ENTRY C           | 1    |                       |                     |
| 25   | 0A0113811 | COIN ENTRY C           | 1    |                       |                     |
| 25   | 0A011381Y | COIN ENTRY C           | 1    |                       |                     |
| 26   | 811113000 | VICTOR CHAIN           | 2    | B-1125 (φ1.6) 8 rings |                     |
| 27   | 600290500 | PHOTO SENSOR           | 1    | K1875-AA01            | Red/Black lead wire |
| 28   | 0C0108200 | BEARING                | 1    | DR-26-H6              |                     |
| 29   | 0C0107400 | STEEL SPACER           | 1    | CF-515Z               |                     |
| 30   | 0C0107800 | BOTTOM CHEAT PLATE     | 1    |                       |                     |
| 31   | 810338100 | EDGING SADDLE          | 1    | TSB-1909L             |                     |
| 32   | 0C0107400 | STEEL SPACER           | 1    | CF-515Z               |                     |
| 33   | 2C0106400 | MASK FILM L            | 1    |                       |                     |
| 34   | 2C0106600 | MASK FILM R            | 1    |                       |                     |
| 35   | 3C0105600 | AMI EARTH HARNESS      | 3    |                       |                     |
| 36   | 0C0109200 | TRAY GAP BLIND PLATE L | 1    |                       |                     |
| 37   | 0C0109400 | TRAY GAP BLIND PLATE R | 1    |                       |                     |

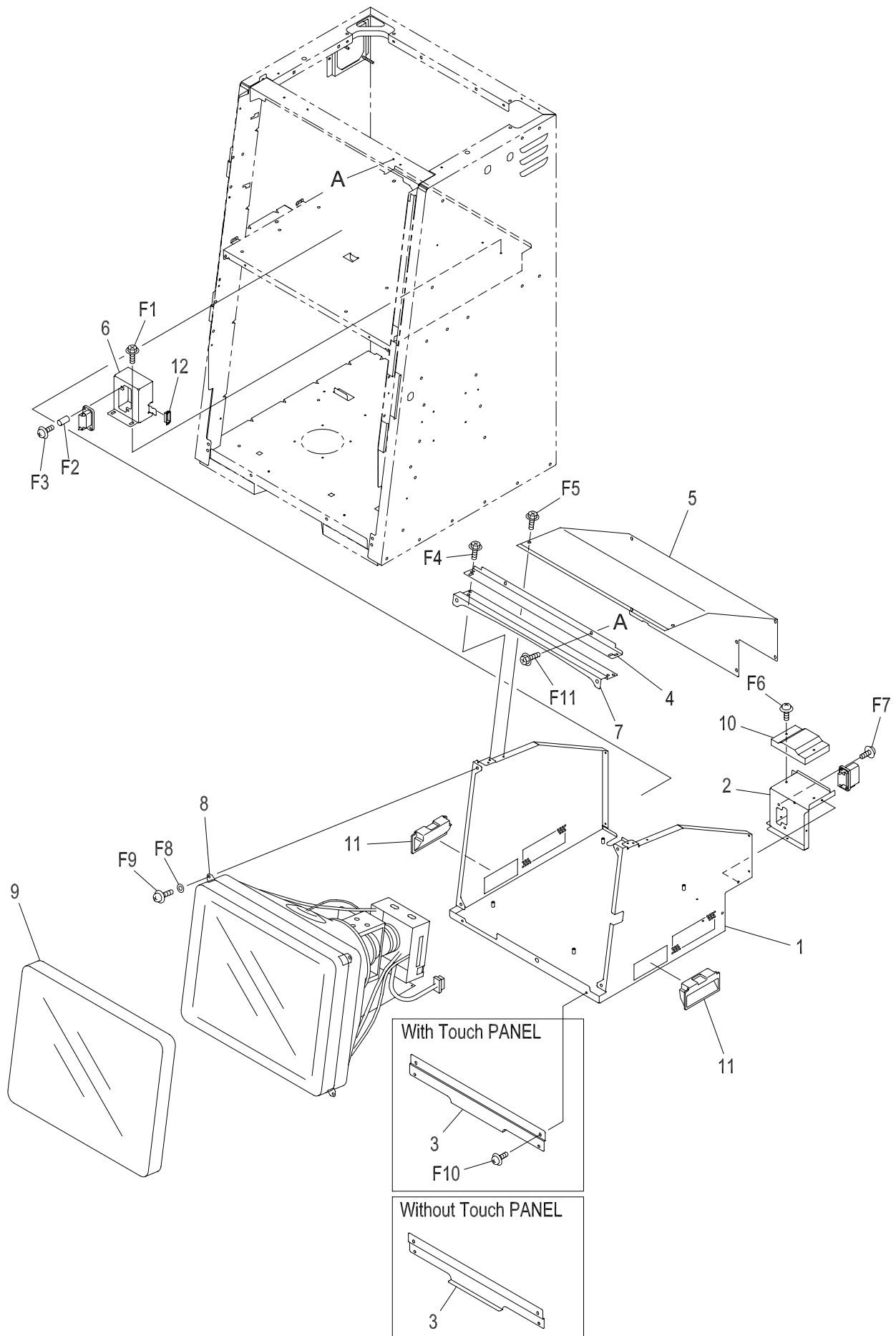


**DOOR ASSEMBLY (FASTENER LIST)****No. 7**

| ITEM | PART NO. | PARTS NAME        | Q'TY | MATERIAL/TYPE | REMARKS |
|------|----------|-------------------|------|---------------|---------|
| F1   |          | CR(FH)-M4X10L     | 2    | M4X10L        |         |
| F2   |          | CRT(HHF)-M4X10L-S | 1    | M4X10L        |         |
| F3   |          | CR(PH)-M3X14L-3P  | 1    | M3X14L        |         |
| F4   |          | CRT(HHF)-M4X12L-S | 2    | M4X12L        |         |
| F5   |          | CRT(HHF)-M4X12L-S | 3    | M4X12L        |         |
| F6   |          | CRT(HHF)-M4X10L-S | 2    | M4X10L        |         |
| F7   |          | CR(FH)-M3X4L      | 2    | M3X4L         |         |
| F8   |          | CRT(HHF)-M4X12L-S | 2    | M4X12L        |         |
| F9   |          | CRT(HHF)-M4X10L-S | 2    | M4X10L        |         |
| F10  |          | CR(PH)-M4X12L-3P  | 4    | M4X12L        |         |
| F11  |          | CRT(HHF)-M4X12L-S | 2    | M4X12L        |         |
| F12  |          | CR(BH)-M3X8L      | 1    | M3X8L         |         |
| F13  |          | CR(PH)-M4X12L-3P  | 1    | M4X12L        |         |
| F14  |          | CRT(HHF)-M4X12L-S | 1    | M4X12L        |         |
| F15  |          | CRT(HHF)-M4X12L-S | 1    | M4X12L        |         |
| F16  |          | ER-φ4             | 1    | φ4            |         |
| F17  |          | CRT(HHF)-M4X12L-S | 1    | M4X12L        |         |
| F18  |          | CR(PH)-M4X12L-3P  | 2    | M4X12L        |         |

# No. 8

## MONITOR ASSEMBLY



**MONITOR ASSEMBLY (PARTS LIST)****No. 8**

| ITEM | PART NO.  | PARTS NAME                       | Q'TY | MATERIAL/TYPE                                   | REMARKS                    |
|------|-----------|----------------------------------|------|---|----------------------------|
| 1    | -         | MONITOR FRAME (19INCH)           | (1)  |   | Constituents of Item No.13 |
| 2    | -         | MONITOR CONNECTOR BKT (19INCH)   | (1)  |   | Constituents of Item No.13 |
| 3    | -         | MONITOR LOWER BKT                | (1)  |   | Constituents of Item No.13 |
| 4    | -         | MONITOR UPPER BKT (19INCH)       | (1)  |   | Constituents of Item No.13 |
| 5    | -         | MONITOR UPPER COVER (19INCH)     | (1)  |   | Constituents of Item No.13 |
| 6    | 0C0013000 | DRAWER CONNECTOR BKT             | 1    |   |                            |
| 7    | 2C0005800 | MONITOR INSULATION SEAT (19INCH) | 1    |   |                            |
| 8    | -         | 19 INCH MONITOR                  | (1)  |   | Constituents of Item No.13 |
| 9    | 600228000 | 19 INCH TOUCH-SCREEN SENSOR      | 0(1) | 13-5431-01MA                                    |                            |
| 10   | 609912400 | TOUCH-SCREEN CONTROLLER          | 0(1) | EXII-1010SC                                     |                            |
| 11   | -         | BUILT-IN KNOB                    | (2)  | AT-100B<br>(Thickness of mounting panel: 1.2mm) | Constituents of Item No.13 |
| 12   | 810338100 | EDGING SADDLE                    | 1    | TSB-1909L                                       |                            |

MONITOR ASSEMBLY (FASTENER LIST)

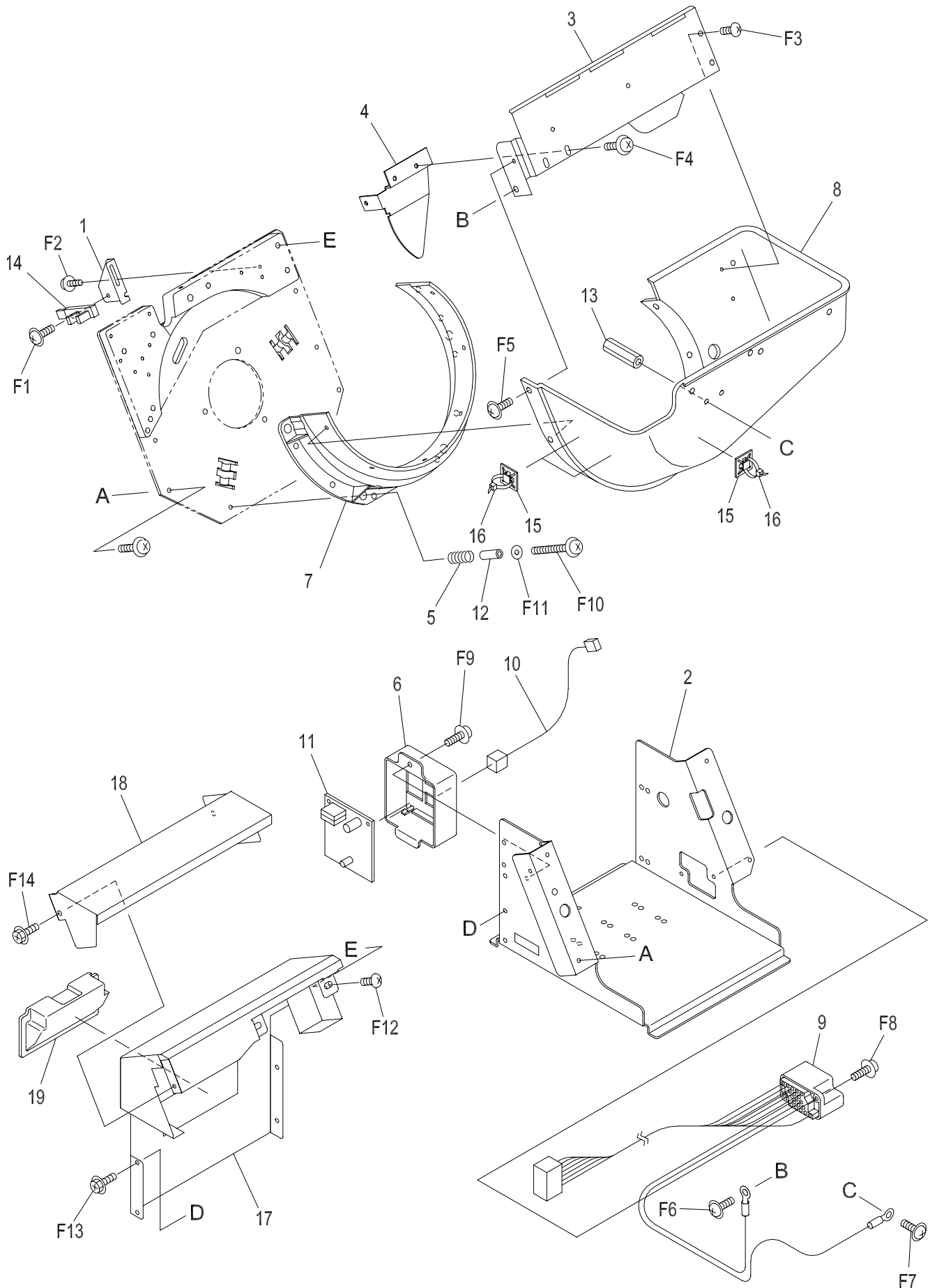
No. 8

| ITEM | PART NO. | PARTS NAME             | Q'TY | MATERIAL/TYPE | REMARKS |
|------|----------|------------------------|------|---------------|---------|
| F1   |          | CRT(HHF)-M4X10L-S      | 2    | M4X10L        |         |
| F2   |          | SPACER (3382309-50120) | 2    | 3382309-50120 |         |
| F3   |          | CR(PH)-M5X20L-3P       | 2    | M5X20L        |         |
| F4   |          | CR(PH)-M4X8L-3P        | 4    | M4X8L         |         |
| F5   |          | CR(BH)-M4X8L           | 8    | M4X8L         |         |
| F6   |          | CR(PH)-M3X20L          | 2    | M3X20L        |         |
| F7   |          | CR(PH)-M4X12L-3P       | 2    | M4X12L        |         |
| F8   |          | PW(L)-M6               | 4    | M6            |         |
| F9   |          | CR(PH)-M6X12L-3P       | 4    | M6X12L        |         |
| F10  |          | CR(PH)-M4X12L-3P       | 4    | M4X12L        |         |
| F11  |          | CRT(HHF)-M4X10L-S      | 2    | M4X10L        |         |

## SERVICE MEMO

# No. 9

## GM HOPPER 1/2



**GM HOPPER 1/2 (PARTS LIST)****No. 9**

| ITEM | PART NO.  | PARTS NAME                | Q'TY | MATERIAL/TYPE                                | REMARKS |
|------|-----------|---------------------------|------|--|---------|
| 1    | 0C0306800 | SENSOR BKT                | 1    |  |         |
| 2    | 0C0307600 | HOPPER MOUNT BASE         | 1    |  |         |
| 3    | 0C0307800 | BASKET PLATE              | 1    |  |         |
| 4    | 0P4301600 | HOPPER REAR BUFFUL        | 1    |  |         |
| 5    | 0P0308200 | HOPPER BUCKET SPRING      | 4    |  |         |
| 6    | 2C0305200 | CONTROL BOX               | 1    |  |         |
| 7    | 2P0301800 | HOPPER BUCKET FLANGE      | 1    |  |         |
| 8    | 2P3301200 | HOPPER BUCKET             | 1    |  |         |
| 9    | 3C0305000 | GM HOPPER INNER HARNESS   | 1    |  |         |
| 10   | 3C0305200 | GM HOPPER COUNT HARNESS   | 1    |  |         |
| 11   | C05311A10 | HOPPER PCB                | 1    | 98203-MH NEW4                                |         |
| 12   | 0P0310800 | SPACER                    | 4    | 4ER25  |         |
| 13   | 0P0311000 | SPACER                    | 2    | 4SP25  |         |
| 14   | 600290200 | PHOTO INTERRUPTER         | 1    | KI659-AA                                     |         |
| 15   | 2P8003000 | AMP BASE                  | 3    | AMP 1D                                       |         |
| 16   | 810105200 | INSULOCK TIE (CABLE BAND) | 3    | PLT1M  |         |
| 17   | 0C0308600 | HOPPER COVER A            | 1    |  |         |
| 18   | 0C0308800 | HOPPER COVER B            | 1    |  |         |
| 19   | 0C0013200 | BUILT-IN KNOB             | 1    | AT-100B (Thickness of mounting panel: 1.2mm) |         |

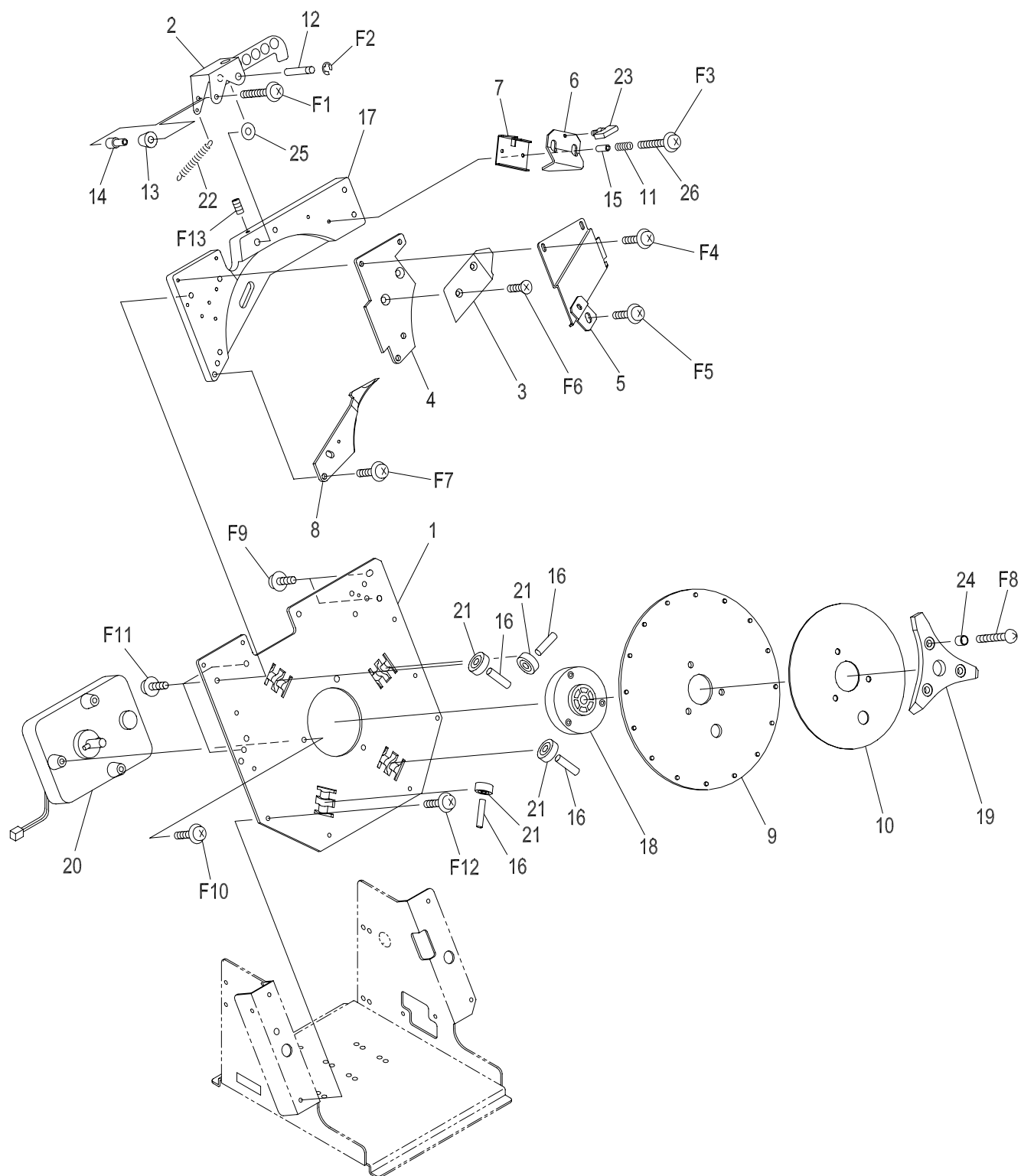
**GM HOPPER 1/2 (FASTENER LIST)****No. 9**

| ITEM | PART NO. | PARTS NAME        | Q'TY | MATERIAL/TYPE | REMARKS |
|------|----------|-------------------|------|---------------|---------|
| F1   |          | CR(PH)-M4X12L-4P  | 1    | M4X12L        |         |
| F2   |          | CR(PH)-M3X6L-3P   | 1    | M3X6L         |         |
| F3   |          | CRT(TH)-M4X8L-B   | 2    | M4X8L         |         |
| F4   |          | CR(PH)-M4X8L-3P   | 2    | M4X8L         |         |
| F5   |          | CR(PH)-M4X10L-3P  | 1    | M4X10L        |         |
| F6   |          | CR(PH)-M4X8L-4P   | 1    | M4X8L         |         |
| F7   |          | CR(PH)-M4X14L-3P  | 1    | M4X14L        |         |
| F8   |          | CRT(HHF)-M4X12L-S | 2    | M4X12L        |         |
| F9   |          | CRT(HHF)-M4X10L-S | 1    | M4X10L        |         |
| F10  |          | CR(PH)-M4X32L-3P  | 4    | M4X32L        |         |
| F11  |          | PW-F5.2XF13XT0.8  | 4    | F5.2XF13XT0.8 |         |
| F12  |          | CR(TPH)-M5X10L    | 2    | M5X10L        |         |
| F13  |          | CRT(HHF)-M4X10L-S | 5    | M4X10L        |         |
| F14  |          | CRT(HHF)-M4X10L-S | 2    | M4X10L        |         |



## SERVICE MEMO

## GM HOPPER 2/2



**GM HOPPER 2/2 (PARTS LIST)****No. 10**

| ITEM | PART NO.  | PARTS NAME             | Q'TY | MATERIAL/TYPE    | REMARKS |
|------|-----------|------------------------|------|------------------|---------|
| 1    | 0C0306400 | HOPPER BACK PLATE      | 1    |                  |         |
| 2    | 0C0306600 | COUNT ROLLER ARM       | 1    |                  |         |
| 3    | 0C0307000 | COIN GUIDE PLATE       | 1    |                  |         |
| 4    | 0C0307200 | KNIFE SPACER           | 1    |                  |         |
| 5    | 0C0307400 | COIN SHIELD (25 CENTS) | 1    |                  |         |
| 6    | 0P0302600 | COIN WIPER \$          | 1    |                  |         |
| 7    | 0P0302400 | WIPER HOLDER           | 1    |                  |         |
| 8    | 0P8020600 | KNIFE (25 CENTS)       | 1    |                  |         |
| 9    | 0P4301000 | PIN WHEEL (25 CENTS)   | 1    |                  |         |
| 10   | 0P0305000 | SHELF WHEEL (25 CENTS) | 1    |                  |         |
| 11   | 0P0306000 | COIN WIPER SPRING      | 2    |                  |         |
| 12   | 0P0309800 | COUNT ARM PIN          | 1    |                  |         |
| 13   | 0P0309400 | COUNT ROLLER           | 1    |                  |         |
| 14   | 0P0309600 | COUNT ROLLER AXIS      | 1    |                  |         |
| 15   | 0P0306200 | WIPER SPRING SPACER    | 2    |                  |         |
| 16   | 0P0308800 | ROLLER PIN             | 4    |                  |         |
| 17   | 0C0308200 | MOUNTING PLATE         | 1    |                  |         |
| 18   | 2C0305000 | PIN WHEEL DRIVE HUB    | 1    |                  |         |
| 19   | 2P0302200 | AGITATOR               | 1    |                  |         |
| 20   | 600848000 | DC MOTOR               | 1    | 163DV-2BUVV      |         |
| 21   | 0P0308600 | RADIAL BALL BEARING    | 4    | 626ZZ M3SML Y121 |         |
| 22   | 0C0308400 | SPRING                 | 1    | E555             |         |
| 23   | 0P0306400 | PLASTIC WING BOLT      | 1    | M3×6             |         |
| 24   | 0P0310600 | SPACER                 | 3    | 1382309-50055    |         |
| 25   | 2C0305600 | WASHER                 | 1    | CC-0613-10       |         |

**GM HOPPER 2/2 (FASTENER LIST)****No. 10**

| ITEM | PART NO. | PARTS NAME        | Q'TY | MATERIAL/TYPE | REMARKS |
|------|----------|-------------------|------|---------------|---------|
| F1   |          | CR(PH)-M4X32L-3P  | 1    | M4X32L        |         |
| F2   |          | ER-φ4             | 1    | φ4            |         |
| F3   |          | CR(PH)-M3X25L-3P  | 2    | M3X25L        |         |
| F4   |          | CR(PH)-M3X10L-3P  | 2    | M3X10L        |         |
| F5   |          | CR(PH)-M5X14L-3P  | 1    | M5X14L        |         |
| F6   |          | CR(FH)-M3X8L      | 2    | M3X8L         |         |
| F7   |          | CR(PH)-M5X14L-3P  | 1    | M5X14L        |         |
| F8   |          | CR(TH)-M5X20L     | 3    | M5X20L        |         |
| F9   |          | CR(TPH)-M5X10L    | 2    | M5X10L        |         |
| F10  |          | CR(TPH)-M5X10L    | 3    | M5X10L        |         |
| F11  |          | CR(TPH)-M5X10L    | 4    | M5X10L        |         |
| F12  |          | CRT(HHF)-M4X12L-S | 4    | M4X12L        |         |
| F13  |          | HSS-M4X8L         | 1    | M4X8L         |         |

# DEFINITIONS OF FASTENER NAMES

| NO. | PARTS NAME                | DESCRIPTION  | REMARKS |
|-----|---------------------------|--|---------|
| 1   | CR(BH)                    | Cross Recessed Head Machine Screw (Bind Head)  |         |
| 2   | CR(FH)                    | Cross Recessed Head Machine Screw (Flush Head)   |         |
| 3   | CR(PH)                    | Cross Recessed Head Machine Screw (Pan Head)   |         |
| 4   | CR(PH)-3P                 | Cross Recessed Head Machine Screw & Washer Assemblies (Pan Head)-3P  |         |
| 5   | CR(PH)-4P                 | Cross Recessed Head Machine Screw & Washer Assemblies (Pan Head)-4P  |         |
| 6   | CR(TH)                    | Cross Recessed Head Machine Screw (Truss Head)   |         |
| 7   | CR(TPH)                   | Cross Recessed Head Machine Screw (TP Head)  |         |
| 8   | CRT(BH)-B                 | Cross Recessed Head Tapping Screw (Bind Head) Type B   |         |
| 9   | CRT(BH)-B                 | Cross Recessed Head Tapping Screw (Truss Head) Type B  |         |
| 10  | CRT(HHF)-S                | Cross Recessed Head Tapping Screw (Hexagon Head with Flange) Type S  |         |
| 11  | CRT(PH)-B                 | Cross Recessed Head Tapping Screw (Pan Head) Type B  |         |
| 12  | CRU(PH)                   | Cross Recessed Head Unified Screw (Pan Head)   |         |
| 13  | ER                        | Retaining Ring (Type E)  |         |
| 14  | HN(1)                     | Hexagon Nut (Class 1)  |         |
| 15  | HN(F)                     | Hexagon Flange Nut   |         |
| 16  | HSS                       | Hexagon Socket Set Screw   |         |
| 17  | PW                        | Plain Washer   |         |
| 18  | PW(L)                     | Plain Washer (Large)   |         |
| 19  | SPACER<br>(3382309-50120) | Taiyo Stainless Spring Co. Ltd. No.3382309-50120<br>(Outside Diameter $\Phi 6.3$ , Inside Diameter $\Phi 5.1$ , Length 12) |         |
| 20  | HSC(F)                    | Hexagon Socket Head Cap Screw (with Flange)  |         |

**SERVICE MEMO**



**Pacific Gaming Pty Ltd.**

23-27 Bourke Road

Alexandria NSW 2015

Australia