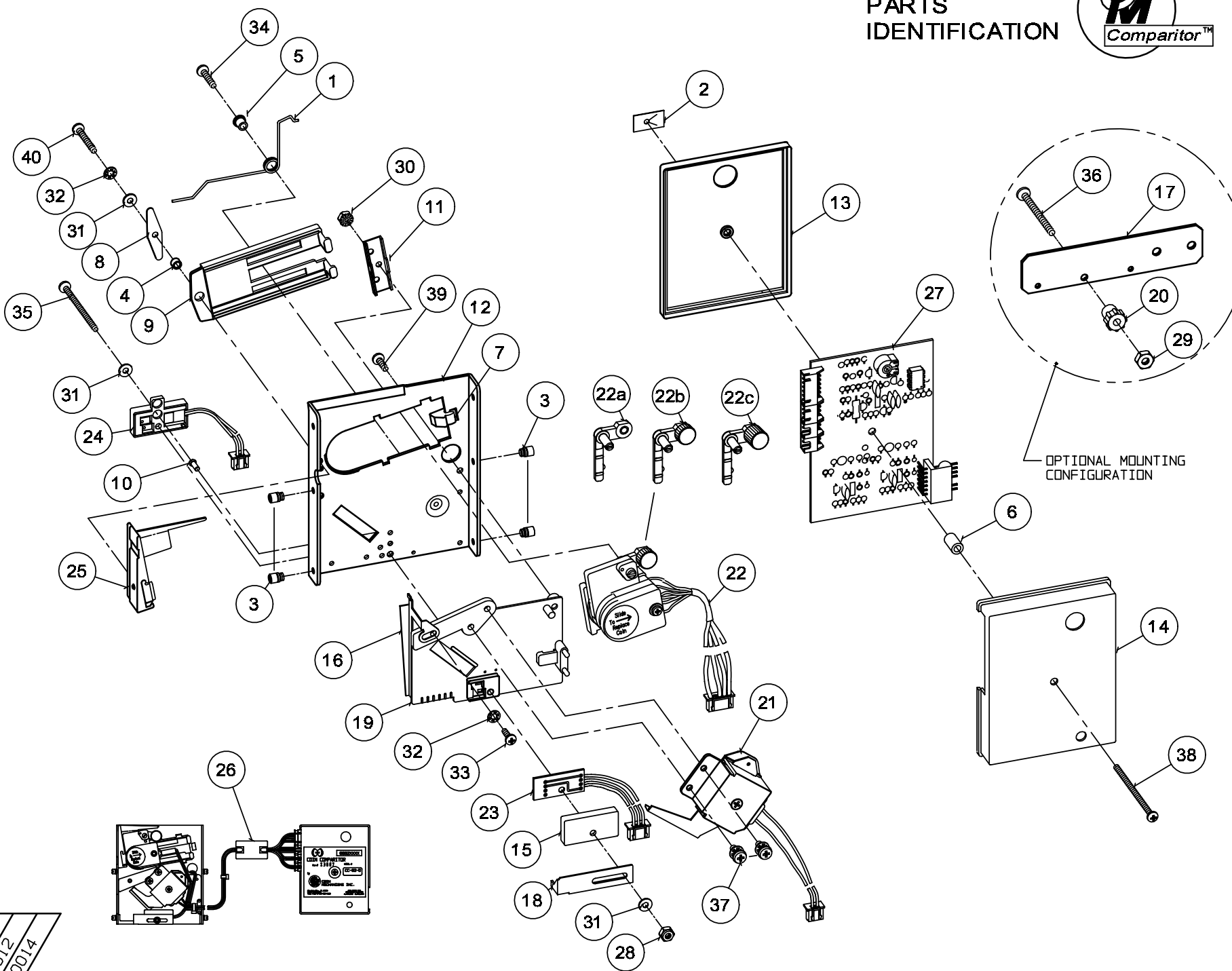


CC-62  
PARTS  
IDENTIFICATION



| ITEM NO. | 66620003 | 66620007 | 66620008 | 66620010 | 66620012 | 66620014 |
|----------|----------|----------|----------|----------|----------|----------|
| 2        | X        | X        | X        | X        | X        | X        |
| 6        | X        | X        | X        | X        | X        | X        |
| 17       | X        | X        | X        | X        | X        | X        |
| 20       | X        | X        | X        | X        | X        | X        |
| 22       | X        | X        | X        | X        | X        | X        |
| 25       | X        | X        | X        | X        | X        | X        |
| 27       | X        | X        | X        | X        | X        | X        |
| 29       | X        | X        | X        | X        | X        | X        |
| 36       | X        | X        | X        | X        | X        | X        |
| 38       | X        | X        | X        | X        | X        | X        |

| MATERIAL COLUMN |             |     |  |      |            |     |  |      |     |
|-----------------|-------------|-----|--|------|------------|-----|--|------|-----|
| ITEM            | P/N         | QTY | MATL DESCRIPTION                         | ITEM | P/N        | QTY | MATL DESCRIPTION                       | ITEM | P/N |
| 1               | 04050032    | 1   | SPRING, TORSION, "62" MECH               | 22a  | 06660024   | —   | DAMPNER & STUD, ASSY, LESS WGT         |      |     |
| 2               | 04050057    | 1   | RETAINER, COVER, HSG, PCB                | 22b  | 06660012   | —   | DAMPNER & WEIGHT, ASSY, 2.6G, DBL NUT  |      |     |
| 3               | 04060005-01 | 4   | STUD, #6 MTG                             | 22c  | 06660013   | —   | DAMPNER & WEIGHT, ASSY, 6G, DBL NUT    |      |     |
| 4               | 04060035-01 | 1   | SPACER, RAIL MTG                         | 23   | 06270003   | 1   | PCB, ASSY, LST, CC62, TERM, 3PST       |      |     |
| 5               | 04060041    | 1   | BUSHING, SPRING LOCATING, ALUM           | 24   | 06270004   | *   | PCB, ASSY, LED, CC62, TERM, 2PST       |      |     |
| 6               | 04090509    | 1   | SPACER, TUBULAR, PLASTIC                 | 25   | 0666XXXX   | 1   | RAIL, ASSY,                            |      |     |
| 7               | 04660002    | 1   | STOP, SENSING COIL SAFETY                | 26   | 08290231   | 1   | FERRITE, SNAPON, EMI SUPPRESSION       |      |     |
| 8               | 04660018-51 | 1   | SPRING, FLAT                             | 27   | 0927XXXX   | 1   | PCB, CTRL, CC-62                       |      |     |
| 9               | 04660030    | 1   | SHIELD, SENSOR COIL RETAINING            | 28   | 400S4      | 1   | NUT, 4-40, LOCK, ELASTIC               |      |     |
| 10              | 04660034-02 | 1   | PIN, COIN DEFLECTOR                      | 29   | 406-6-5    | 1   | NUT, 6-32 X 5/16, HEX NUT              |      |     |
| 11              | 04660062-01 | 1   | BRKT, COIL LOCKING                       | 30   | 436-4      | 1   | NUT, 4-40, HEX, KEPS                   |      |     |
| 12              | 04660067-05 | 1   | MAINPLATE, CUSTOM MECH                   | 31   | 600-4      | 3   | WASHER, FLAT, #4                       |      |     |
| 13              | 04660071    | 1   | BASE, PCB MTG                            | 32   | 630-4      | 2   | WASHER, LOCK, #4                       |      |     |
| 14              | 04660076    | 1   | COVER, CONTROL MODULE                    | 33   | P-104-4-3  | 1   | SCREW, 4-40 X 3/16, PHIL, PH, MS       |      |     |
| 15              | 04660079    | 1   | COVER, LST                               | 34   | P-104-4-6  | 1   | SCREW, 6-32 X 3/8, PHIL, PH, MS        |      |     |
| 16              | 04660080-51 | 1   | RAIL, ADJ GUIDE                          | 35   | P-104-4-16 | 1   | SCREW, 4-40 X 1, PHIL, PH, MS          |      |     |
| 17              | 04660082-51 | 1   | PLATE, CONTROL, MTG                      | 36   | P-104-6-16 | 1   | SCREW, 6-32 X 1.00, PHIL. PH, MS       |      |     |
| 18              | 04660101-01 | 1   | BRKT, RAIL SUPPORT                       | 37   | P-186-4-3  | 2   | SCREW, 4-40 X 3/16, PHIL, SEMS WASHER  |      |     |
| 19              | 05660007    | 1   | COVERPLATE, CUSTOM MECH                  | 38   | P-218-6-20 | 1   | SCREW, 6-20 X 1-1/4, PHIL, MS, TYPE AB |      |     |
| 20              | 05660020    | 1   | NUT, RETAINING, MOLDED                   | 39   | P-221-4-4  | 1   | SCREW, 4 X 1/4, PHILTYPE 45 PLASTITE   |      |     |
| 21              | 06250008    | 1   | COIL & BRKT, ASSY, GRN, 10.5, 2PST, CC62 | 40   | P-221-4-8  | 1   | SCREW, 4 X 1/2, PHILTYPE 45 PLASTITE   |      |     |
| 22              | 0625XXXX    | 1   | COIL, ASSY, SENSOR                       |      |            |     |  |      |     |



COIN MECHANISMS INC.

P.O. Box 5128, Glendale Heights, IL 60139-5128\*1-800/323-6498\*FAX 630/924-7088  
E-MAIL coinmech@coinmech.com VISIT OUR WEBSITE AT www.coinmech.com