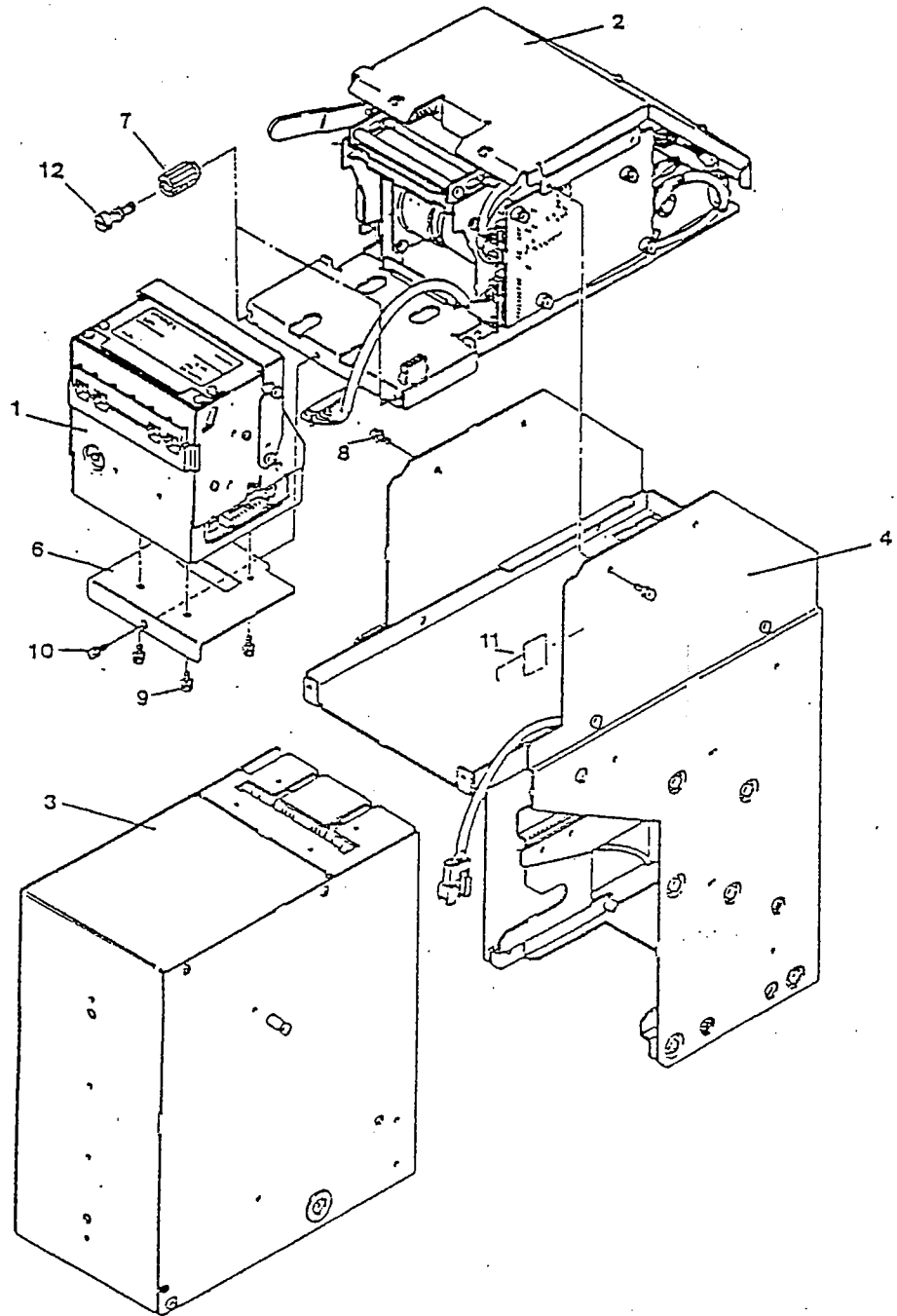


PARTS DIAGRAM

Model	DBV-140-SS	Classification	No. 1 Various Consolidated Units	Draw	1/1
Date	1994. 12. 20	Amendment			P955-A-01



PARTS LIST

model	DBV-45-SS
-------	-----------

Entire Unit

Handwritten notes on lined paper:

- Top left: \rightarrow (arrow pointing right)
- Top right: \rightarrow (arrow pointing right)
- Middle left: \rightarrow (arrow pointing right)
- Middle right: \rightarrow (arrow pointing right)
- Bottom left: \rightarrow (arrow pointing right)
- Bottom right: \rightarrow (arrow pointing right)

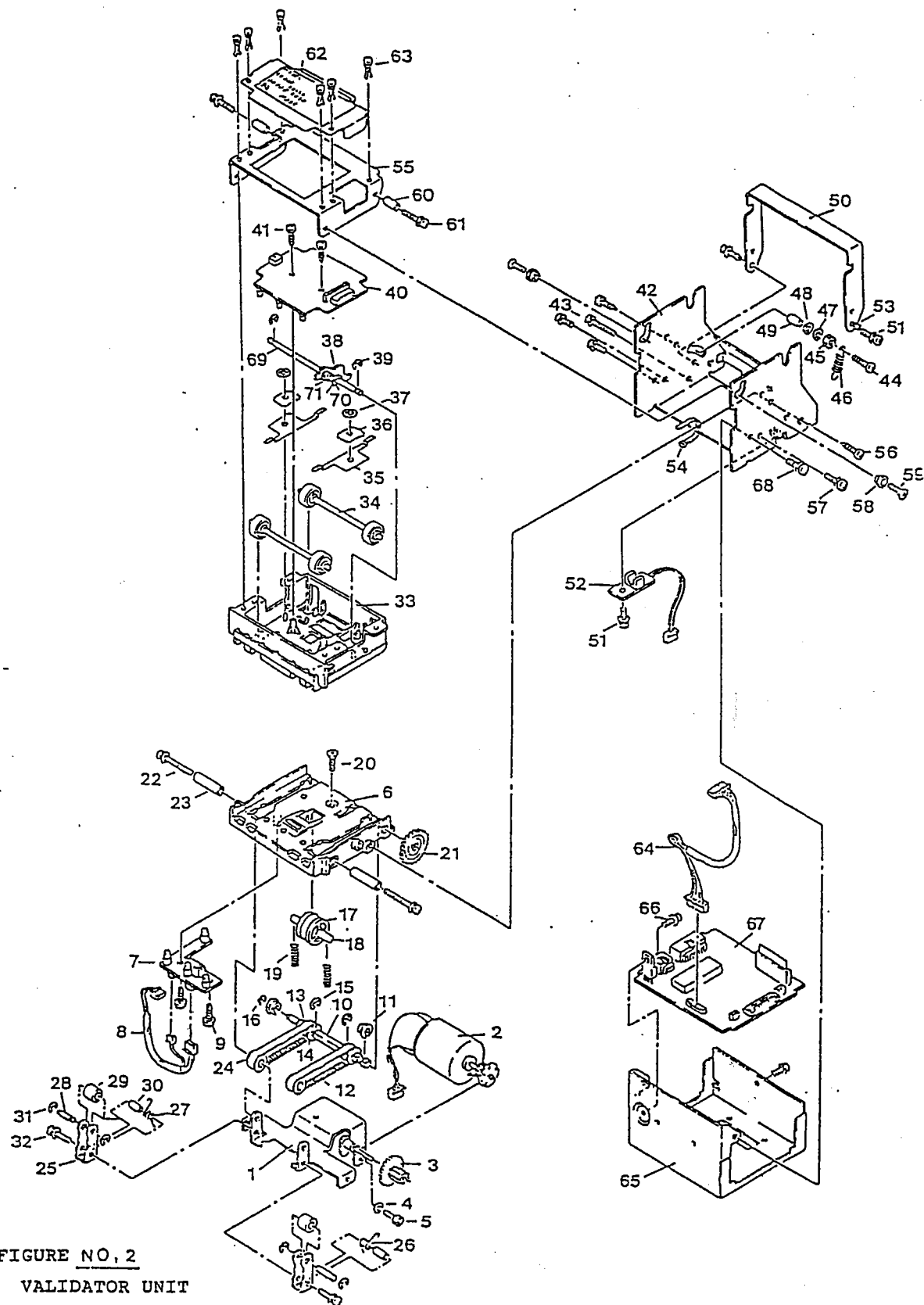


FIGURE NO. 2
VALIDATOR UNIT

841 - 002

PARTS LIST

model DBV-45-SS		Validator Unit			
No.	EDP No.	Parts No.	Description	Unit Pcs.	Unit Price (US \$)
1	026093	ASP1-7V01	Motor Bracket Assy.	1	
2	041691		Conveying Motor Assy.	1	
	(025777)	CN26-06201	Conveying Motor	(1)	
	(025772)	411-05-04	Motor Harness	(1)	
	(000343)		Corner Tube Ø 2 x 20	(1)	
	026107	RE-7V09	Encoder Gear	1	
3	026106	RE-7V08	Gear 2	1	
4	014887		Ø 3 Spring Washer	1	
5	037299		M3 x 5 Hexagonal Socket Screw	1	
6	039010	RE-7V15A	Guide (Lower)	1	
—	039008	RE-7V03B	Reflecting Sensor Bush	1	
—	026102	RE-7V04A	Sensor Bush	4	
7	042926	KE759-JC03	LED Substrate	1	
8	043846	415-05-02A	LED Harness	1	
9	026071		M2.6 x 8 Tapping Screw	2	
10	026098	SH5-7V01	Drive Shaft	1	
11	026109	RE-7V11	Bearing	2	
12	040988	55MXL4 V	Timing Belt	2	
13	026103	RE-7V05	Drive Pulley	2	
14	026091	P1-7V09	Washer	4	
15	003707		Ø 3 E-Ring	2	
16	003705		Ø 2 E-Ring	1	
17	005234	RE-7520	Whole Head Roller	1	
18	005313	SH3-7520	Head Roller Shaft	1	
19	026082	CS-7V01	Head Roller Spring	2	
20	027803		M3 x 12 Countersunk Head Small Screw (Black)	1	
21	026105	RE-7V07	Gear 1	1	
22	013697		M3 x 18 Screw with Washer	2	
23	026074		3 x 13 Wound Spacer	2	
24	026104	RE-7V06	Driven Pulley	2	
25	038969	P1-7V11A	Tension Lever	2	
26	038972	KS-7V03	Tension Spring, Left	1	
27	038971	KS-7V04	Tension Spring, Right	1	
28	038974	BE4-7V01	Roller Pin	2	
29	038936	C-405	Dual Control Spacer	2	
30	042465		3 x 7.5 Wound Spacer	2	
31	003707		Ø 3 E-Ring	4	
32	006037		M3 x 12 Screw with Washer	2	
33	039009	RE-7414B	Guide (Upper)	1	
	054922	P1-7V08A	Reflecting Plate	1	
—	039008	RE-7V03B	Reflecting Sensor Bush	4	
	026102	RE-7V04A	Sensor Bush	1	
34	026094	BE-7V01	Roller Rod	2	
	026108	RE-7V10	Roller	4	
	003705		Ø 2 E-Ring	8	
35	026086	P1-7V04	Leaf Spring	2	
36	038970	P1-7V12	Plate	2	
37	026073	CSTW-3	Ø CS Retainer Ring	2	
38	038994	P1-7V13	Lever (V)	1	

[illegible]

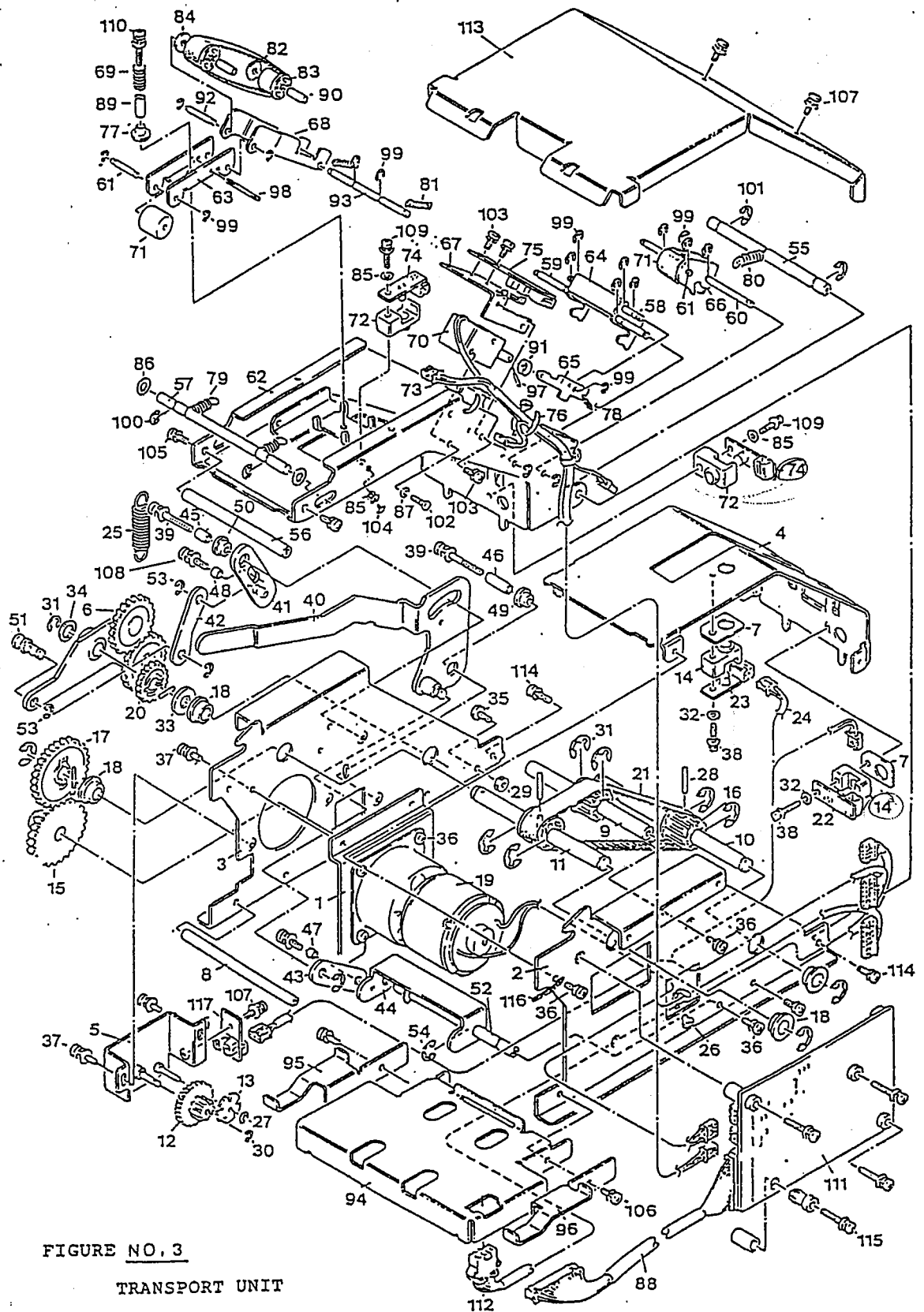


FIGURE NO. 3

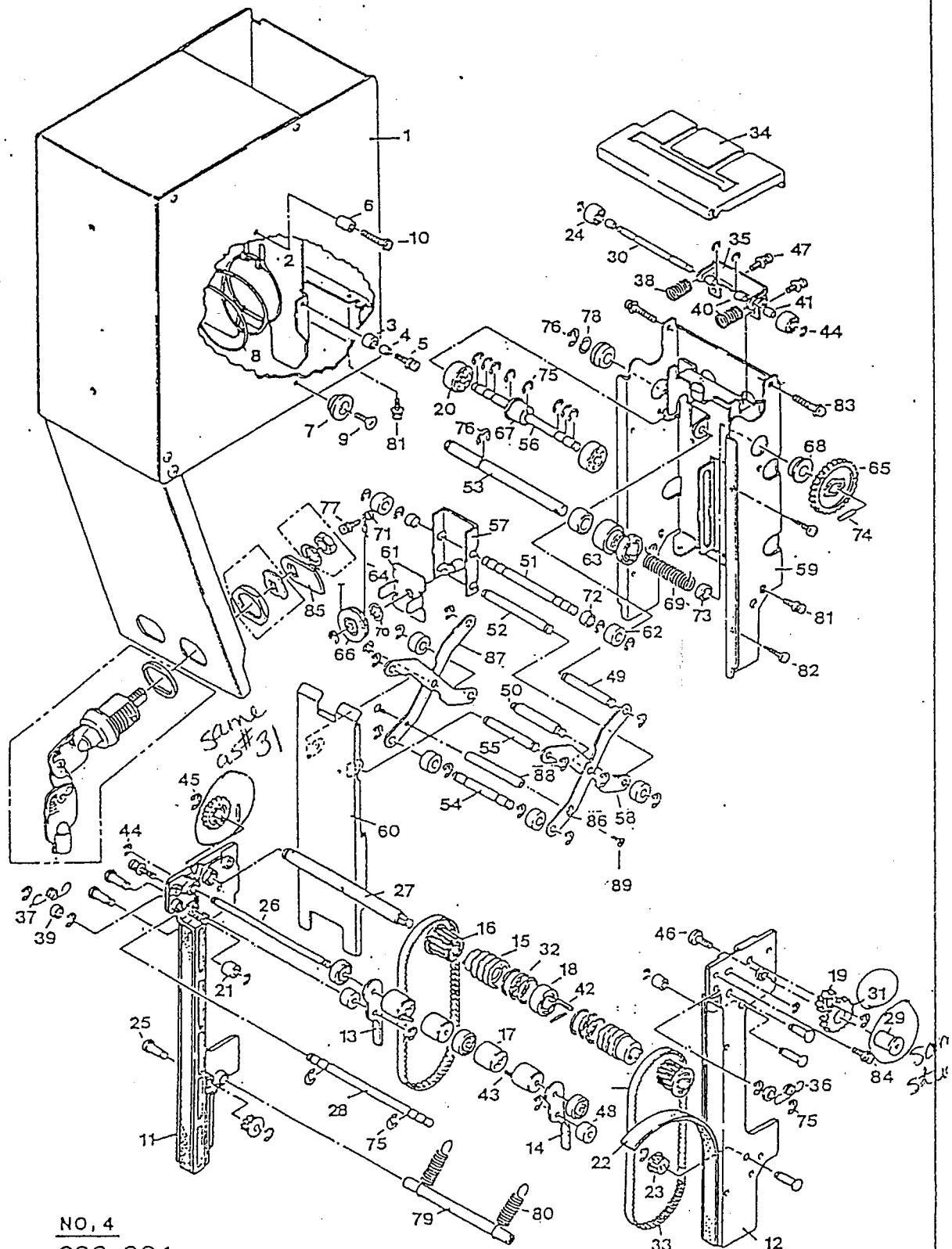
TRANSPORT UNIT

841 - 003

PARTS LIST					
model	DBV-45-SS		Conveying Unit		
	EDP	Parts	Description	Unit	Unit
No.	No.	No.		Pcs.	Price (US \$)
1	034792	PH-01-B	Motor Bracket	1	
2	038998	PH-02-B	Conveying Frame, Right	1	
3	038999	PH-03-B	Conveying Frame, Left	1	
4	039000	PH-04	Lower Guide	1	
5	034796	ASPH-05	Gear Cover Assy.	1	
		PH-05-B	Gear Cover Assy.	(1)	
		LH-12-B	Gear Stud	(1)	
		LH-13-B	Gear Stud	(1)	
6	051992	U-PH-06	Gear Arm UNIT	1	
	(051992)	ASPH-06	Gear Arm Assy	(1)	
		PH-06	Gear Arm	(1)	
		LH-14	Boss	(1)	
		REH-02	Gear Cover Assy.	(2)	
		LH-15	Gear Stud	(2)	
	(018249)	MB0608DU	DU Bush	(1)	
7	034799	PH-08	Spacer	2	
8	034819	LH-02	Beam	1	
9	034820	LH-03-B	Beam	1	
10	034821	LH-04	Driven Shaft	1	
11	038875	LH-05	Driven Shaft	1	
12	026106	RE-7V08	Gear 2	1	
13	026107	RE-7V09	Encoder Gear	1	
14	005236	RE-7513	Sensor Spacer (L)	2	
15	034857	REH-01	Motor Gear	1	
16	034850	REO-05	Pulley	3	
17	034854	REO-09	Gear B	1	
18	006008	R-BRF0605	Sleeve Bearing	4	
19	041738		Stacker Motor Assy.	1	
	(038224)	RB35CM-TTM	Motor	(1)	
	(035233)	413-05-11A	Motor Harness	(1)	
	(000343)		Corner Tube Ø 2 x 20	(2)	
20	018184	SBC-0216	Gear	1	
21	034872	118MXL W9.5	Timing Belt	1	
22	041742		LED Substrate for 1 KL	1	
23	041743		LED Substrate for 1 KL	1	
24	035239	413-05-09A	Stacker LED Harness	1	
25	014311	No. 2153	Spring	1	
26	000208	CV-70	Convex	1	
27	038935	CSTW-1.5	CS Retaining Ring	1	
28	038938		2 x 10 Parallel Pin	4	
29	014554		M3 Nut, Grade 1	1	
30	003705		Ø 2 E-Ring	1	
31	003709		Ø 5 E-Ring	10	
32	006026		3 x 6 x 0.5 Flat Washer	2	
33	000927		6 x 11.5 x 1.6 Flat Washer	1	
34	038932		6 x 8 x 0.1 Flat Washer	1	
35	026964		3 x 4 Bind	1	
36	006300		M3 x 5 Screw	12	
37	003609		M3 x 6 Screw with Washer	3	

38	006037		M3 x 12 Screw with Washer	2	
39	013697		M3 x 18 Screw with Washer	2	
40	038835	ASP-1	Extraction Lever Assy	1	
		P-1-C	Extraction Lever	(1)	
		L-1	Arm Stand	(1)	
41	037519	ASP-2	Link A Assy	1	
		P-2	Link A	(1)	
		L-3	Link Stud	(1)	
42	037521	P-3	Link B	1	
43	037522	P-4	Link C	1	
44	037523	P-5	Push-up Plate	1	
45	039105		3 x 6 Wound Bush	1	
46	030678		3 x 8 Wound Bush	1	
47	005828		3 x 2 Wound Bush	1	
48	001632		3 x 2.5 Wound Bush	1	
49	037526	L-2	Lever Hinge Collar	1	
50	037528	L-4	Link Collar	1	
51	037529	L-5	Spring Stud	1	
52	037530	L-6	Push-up Beam	1	
53	003707		Ø 3 E-Ring	4	
54	003708		Ø 4 E-Ring	2	
55	038876	LH-06	Beam	1	
56	034824	LH-07	Beam	1	
57	034825	LH-08	Latch Rod	1	
58	034826	LH-09	Link Rod	1	
59	038996	LH-10-B	Lever Rod	1	
60	034828	LH-11	Arm Rod	1	
61	034829	LH-16	Roller Rod	2	
62	039001	PH-07	Upper Guide Joint	1	
		PH-07-1	Upper Guide Base	(1)	
		PH-07-2	Upper Guide Right Side Plate	(1)	
		PH-07-3	Upper Guide Left Side Plate	(1)	
		PH-07-4B	Arm Guide	(1)	
		PH-07-5	Reinforcing Plate	(1)	
63	039002	PH-09-B	Roller Arm	1	
64	039003	PH-10-B	Lever B	1	
65	034802	PH-11	Link	1	
66	039004	PH-12-B	Roller Arm B	1	
67	039005	PH-13-B	Sensor Bracket	1	
68	037571	PH-15	Belt Guide	1	
69	034868	SPH-01	Spring	1	
70	038225	TDS-05B	Solenoid Assy	1	
71	034851	REO-06	Roller	2	
72	005236	RE-7513	Sensor Spacer (L)	2	
73	035238	413-05-08	Stacker PT Harness	1	
74	053613		PT Substrate for 1 KL	2	
75	041740		Photo Interrupter Substrate	1	
76	000208	CV-70	Convex	3	
77	038933	CW-404	Dual Control Spacer	1	
78	033260	No. 2022	Spring	1	
79	035276	No. 2085	Spring	2	
80	035275	No. 2093	Spring	1	
81	039365	No. 2061	Tension Coil Spring	2	
82	037572	63MXL W7.9	Timing Belt G Type	1	

[illegible]

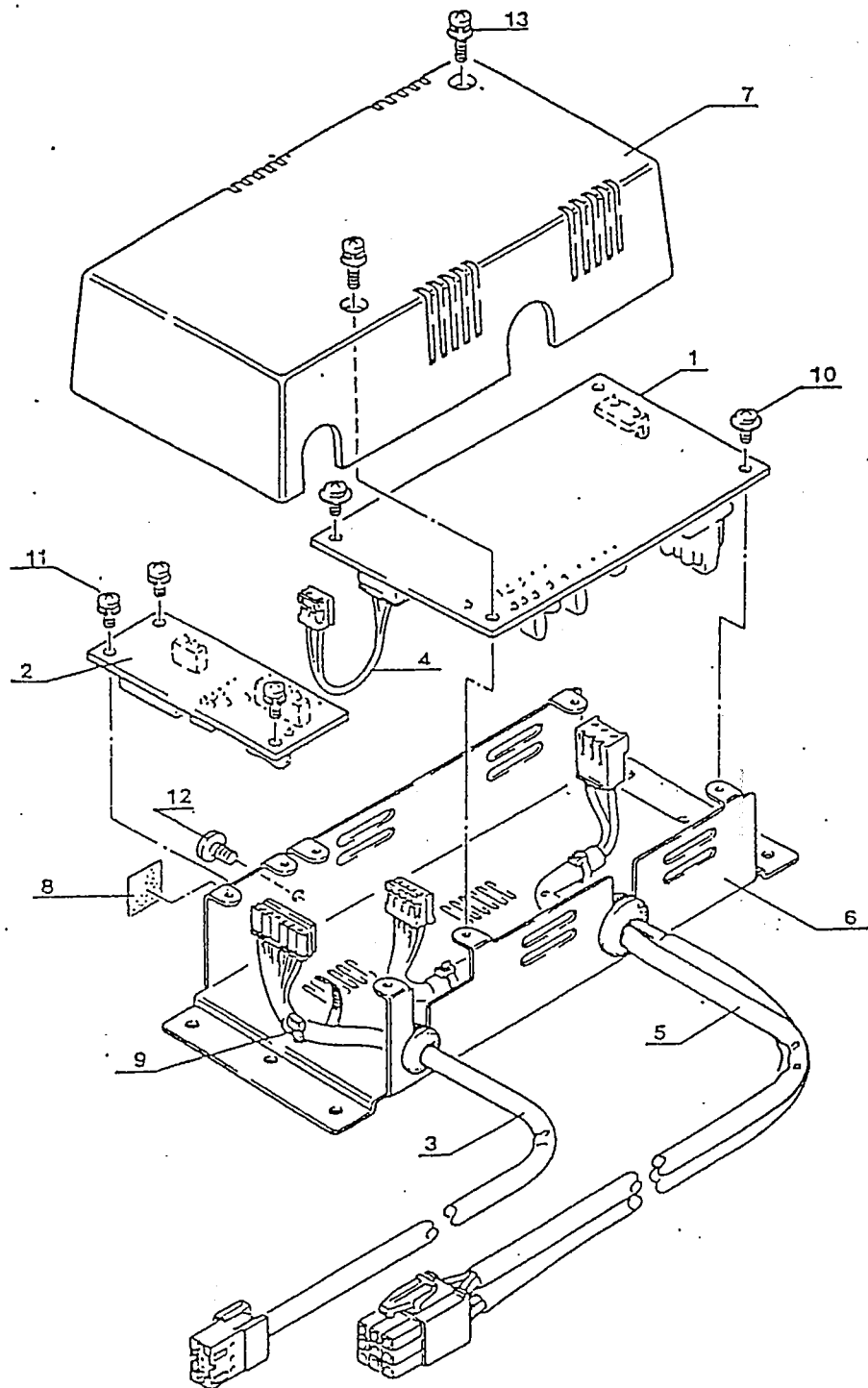


NO. 4
890-004

			PARTS LIST		
model	DBV-45-SS		Box Unit		
					Unit
	EDP	Parts	Description	Unit	Price
No.	No.	No.		Pcs.	(US \$)
1	034807	PB-01C	Box Frame Joint	1	
		PB-01-1C	Box Frame	(1)	
		PB-01-2	Lock Strike	(1)	
		PB-01-3A	Box Side Plate	(2)	
		PB-01-4	Box Top Plate	(1)	
	034808	PB-02	Box Bottom Plate Joint	1	
		PB-02-1B	Box Bottom Plate	(1)	
		PB-02-2	Spring Hook	(2)	
	034809	PB-03	Box Cover Joint	1	
		PB-03-1	Box Cover Joint	(1)	
		PB-03-2	Bill Guide N	(1)	
	034908	LB-03	Hinge Collar	2	
	040464	AD42	Seal Type Rivet	8	
2	038855	PB-04-D	Receiver Plate	1	
3	039077	C-403	Dual Control Spacer C Type	4	
4	017157		3 x 4 Wound Bush	4	
5	003611		M3 x 8 Screw with Washer	4	
6	034830	LB-01	Latch Collar	1	
7	034831	LB-02	Guide Stud	2	
8	034869	LB-02-B	Receiver Plate Spring	2	
9	017052		M3 x 8 Countersunk Head Screw	2	
10	004005		M3 x 10 Screw	1	
11	039012	REO-01D	Guide 1	1	
12	038993	REO-02D	Guide 2	1	
13	038912	RE-A	Guide, Left	1	
14	038911	RE-B	Guide, Right	1	
15	034849	REO-04	Pulley	2	
16	034850	REO-05	Pulley	2	
17	034851	REO-05	Roller	4	
18	034852	REO-07	Roller	1	
19	034853	REO-08	Gear A	1	
20	037579	REO-12	Belt Roller	2	
21	037580	REO-13	Roller	2	
22	035241	REO-01	Sponge	2	
23	026104	RE-7V06	Driven Pulley	2	
24	026108	RE-7V10	Roller	5	
25	034837	LO-06	Stud	6	
26	034838	LO-07	Roller Rod	1	
27	034839	LO-08	Conveying Shaft	1	
28	034841	LO-10	Rod	1	
29	034842	LO-11	Stud	1	
30	037577	LO-17	Tension Rod	1	
31	018184	SBC-0216	Gear	2	
32	034864	P-11	O Ring	6	
33	037578	140MXL W4.8	Timing Belt	2	
34	034817	PO-06	Push Mechanism Cover Joint	1	
		PO-06-1	Push Mechanism Cover A	(1)	
		PO-06-2	Push Mechanism Cover B	(1)	
		PO-06-3	Push Mechanism Cover C	(1)	

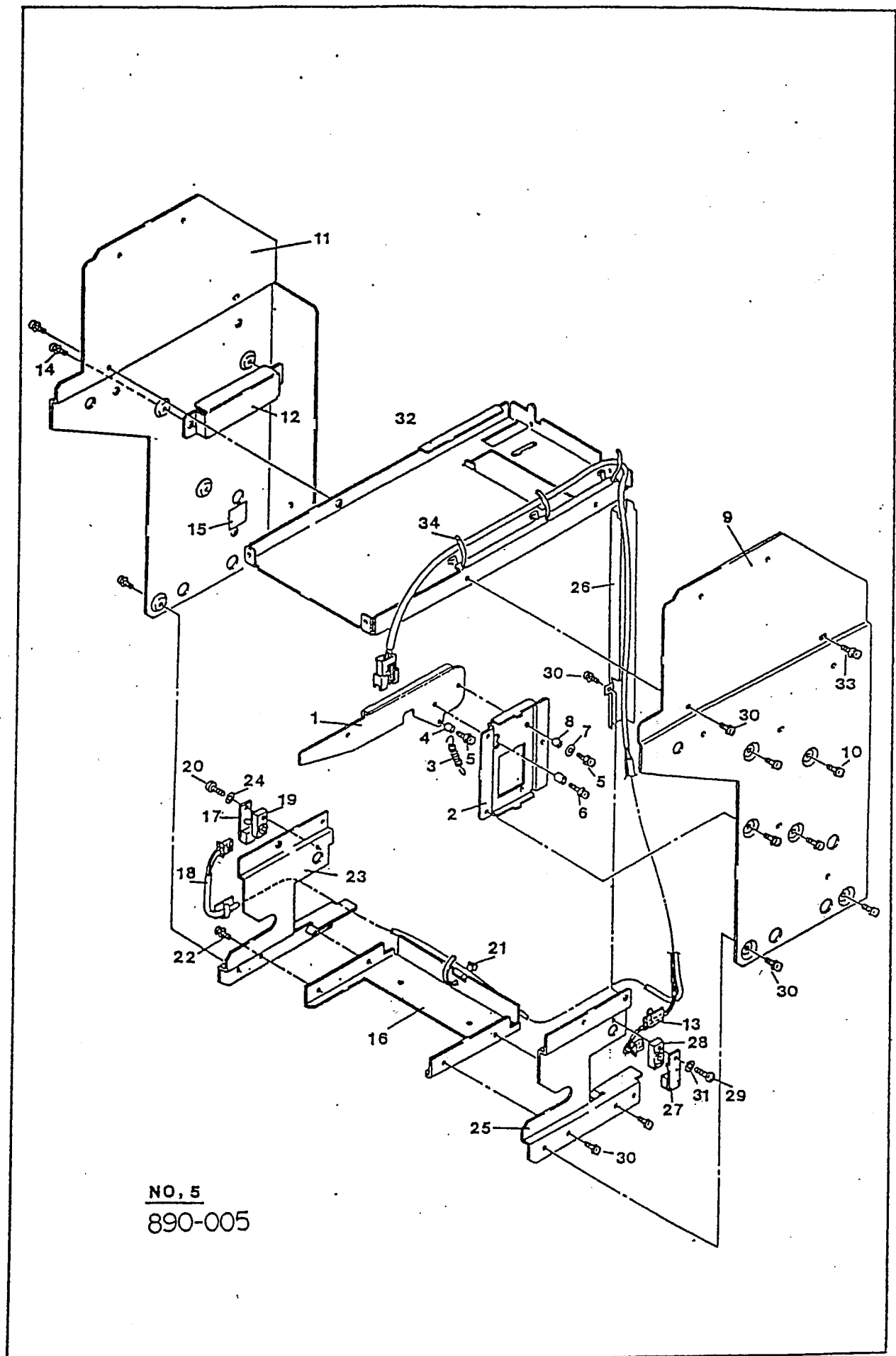
35	037575	PO-08	Tension Guide	1	
36	034865	SPO-01	Spring	1	
37	034866	SPO-02	Spring	1	
38	037576	SPO-04	Tension Spring	2	
39	005762		4 x 2.5 Wound Bush	2	
40	017157		3 x 4 Wound Bush	2	
41	005763		3 x 5 Wound Bush	2	
42	038938		2 x 10 Parallel Pin	3	
43	018192		1.6 x 10 Spring Pin	2	
44	003705		Ø 2 E-Ring	6	
45	003709		Ø 5 E-Ring	1	
46	014050		M3 x 8 Bind	1	
47	003609		M3 x 5 Screw with Washer	2	
48	026572	RE-7S02	Guide Roller	2	
49	034832	LO-01	Rod	1	
50	034833	LO-02-B	Arm Shaft	1	
51	034834	LO-03-B	Rod	1	
52	034835	LO-04	Rod	1	
53	034836	LO-05-A	Pulley Shaft	1	
54	034843	LO-12	Rod	1	
55	034844	LO-13	Rod	1	
56	038908	LO-16-B	Rod	1	
57	034812	ASPO-01	Arm Guide Assy	1	
		PO-01	Arm Guide Assy	(1)	
		LO-14	Stud	(1)	
58		PO-02-C	SEE: Item 86 & 87	2	
59	034816	PO-05	Base Joint	1	
		PO-05-1	Base Joint	(1)	
		PO-05-2	Base Bill Guide	(1)	
60	034814	PO-03	Push Plate Joint	1	
		PO-03-1	Push Plate Joint	(1)	
		PO-03-2	Push Plate Hinge	(1)	
61	034818	PO-07	Wire Guide	1	
62	026572	RE-7S02	Guide Roller	6	
63	034863	OWC6-12-6-IN	One Way Clutch	1	
	034848	REO-03	Winding Pulley	1	
64	034861	W-01A	Wire Rope	1	
65	034854	REO-09	Gear B	1	
66	034855	REO-10	Wire Pulley	1	
67	034856	REO-11	Pulley B	1	
68	003564	HCA-PE11	Guide Pulley Bearing	2	
69	034867	SPO-03	Spring	1	
70	035272	CSTW-6	CS Retaining Ring	1	
71	005828		3 x 2 Wound Bush	1	
72	006029		4 x 3 Wound Bush	2	
73	039076		6 x 3 Wound Bush	1	
74	038938		2 x 10 Wound Bush	1	
75	003707		Ø 3 E-Ring	38	
76	003708		Ø 4 E-Ring	2	
77	003611		M3 x 8 Screw with Washer	1	
78	038932		6 x 8 x 0.1 Polyvinyl Chloride Washer	1	
79	034840	PO-06-B	Beam	1	
80	026221	No. 2122	Spring	2	
81	003609		M3 x 6 Screw with washer	4	

[illegible]



NO. 6
890-006

[illegible]



[illegible]