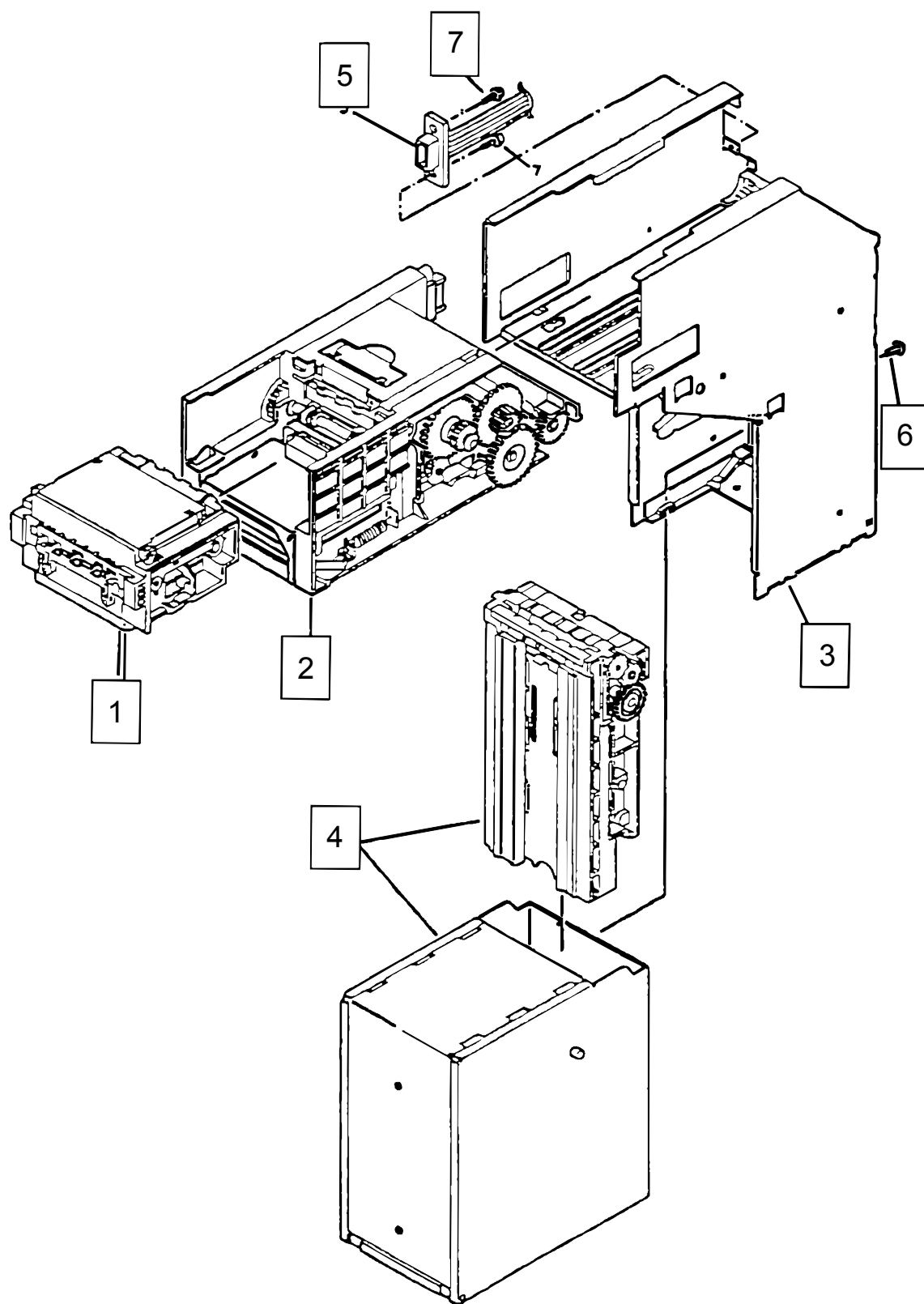


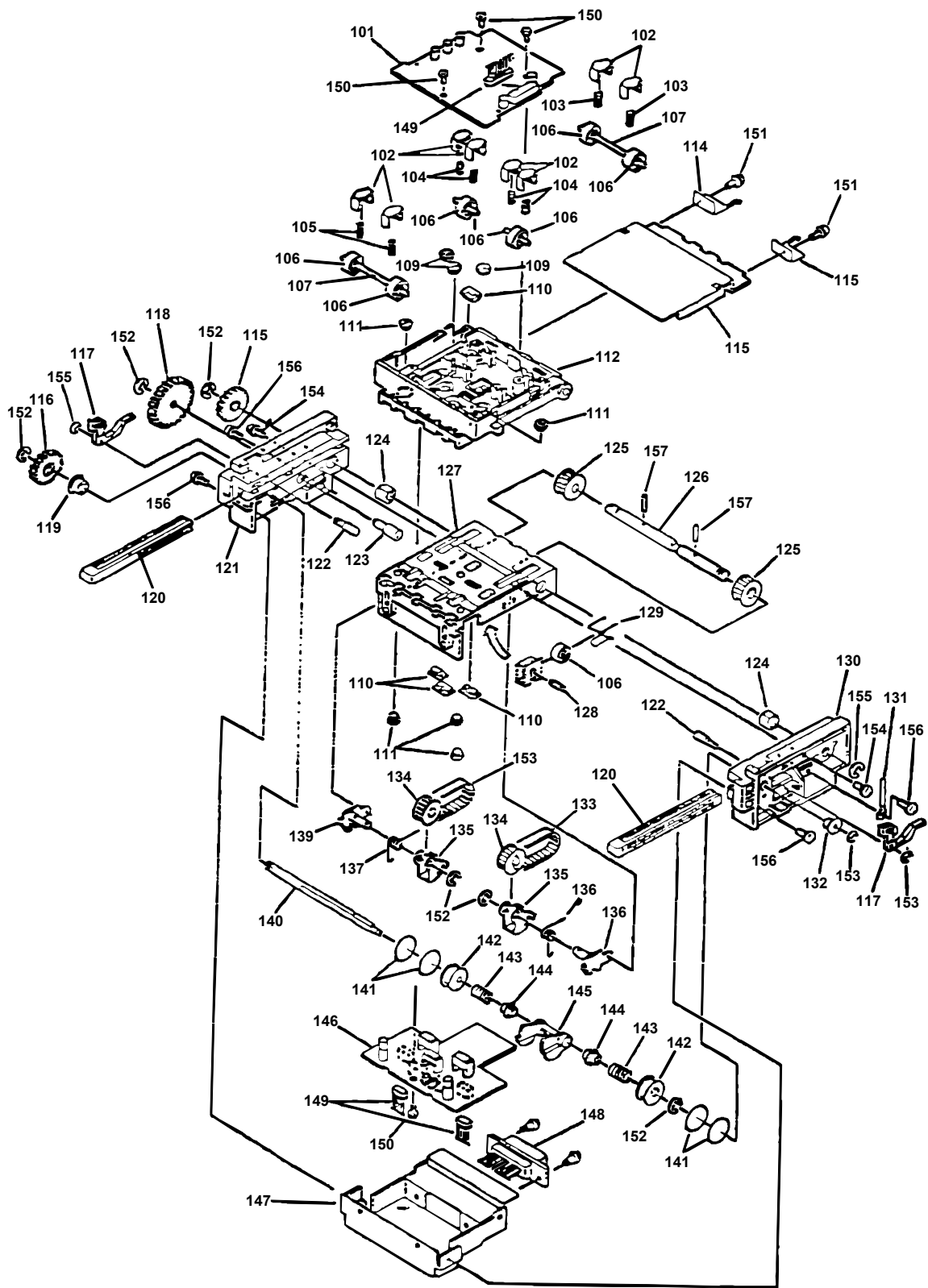
**WBA Illustrated Parts Breakdowns
And Parts Lists
Models 10, 11, 12, 13, 20, 21, 22, 23**

WBA 10-11 Complete Unit



| PARTS LIST | | | |
|-------------------|------------|------------|--------------------------------|
| Model | WBA ** SS | | Entire Unit |
| No. | EDP No. | Parts No. | Description |
| 1 | 550-100018 | | WBA 10/11 head unit |
| | 054632 | | WBA 20/21 head unit 81 Type |
| | 054630 | | WBA 20/21 head unit 77 Type |
| | 550-100038 | | WBA 20/21 head unit 71 type |
| | 055568 | | WBA 20/21 head unit 67 type |
| 2 | 052458 | | WBA 10/20 SS carrying unit |
| | 053975 | | WBA 11/21 SS carrying unit IGT |
| 3 | 200-100047 | | WBA frame unit IGT |
| 4 | 808-001002 | | WBA-SS Cash box unit |
| 5 | 400-100038 | 840-05-15 | Removable connector |
| | 400-100039 | 840-05-14A | Removable connector |
| 6 | 014086 | | M3x6 screw with washer (black) |
| 7 | 186-300510 | | M3 x 10 screw with washer |

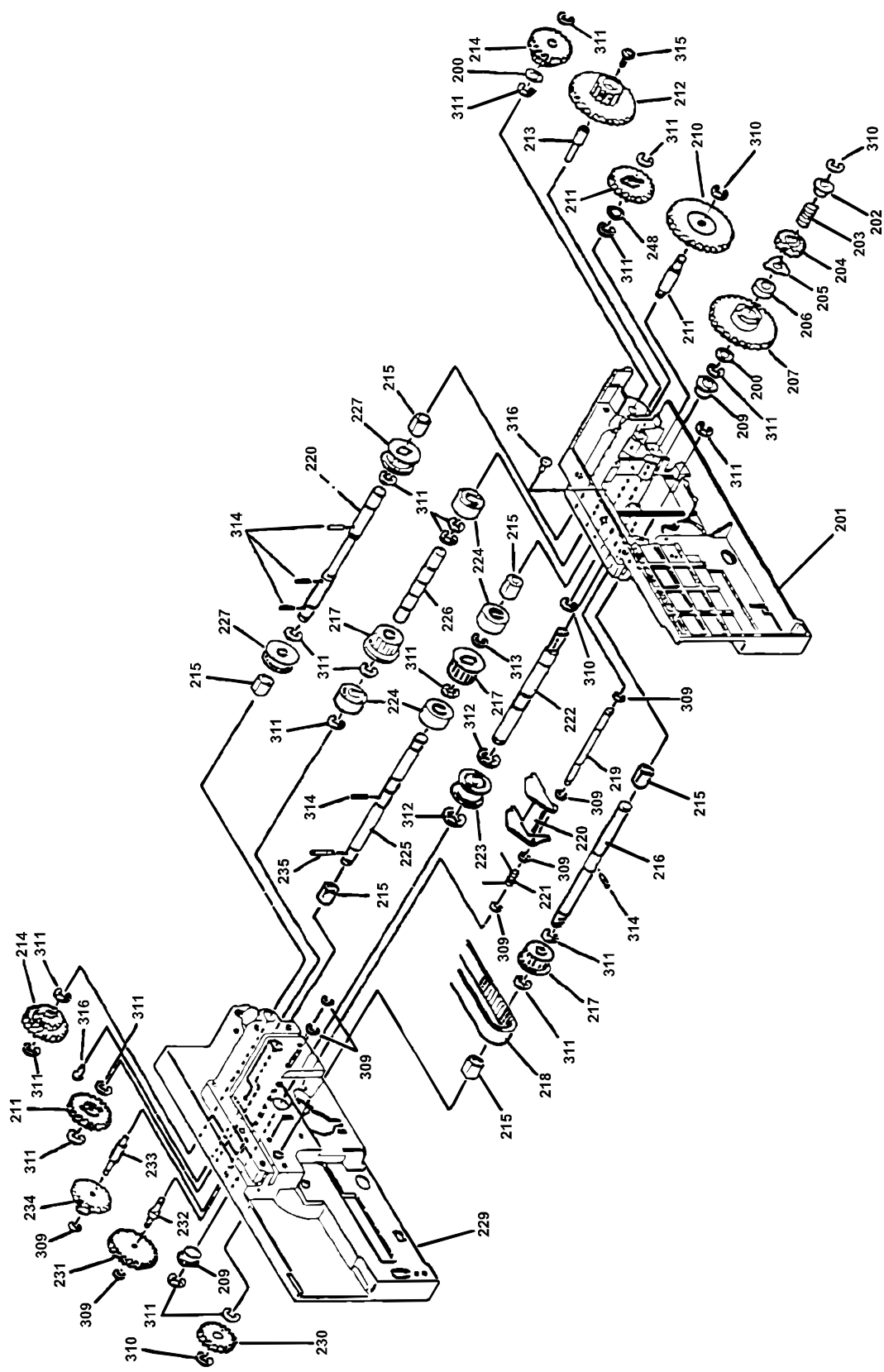
WBA 10-11 Validator Unit

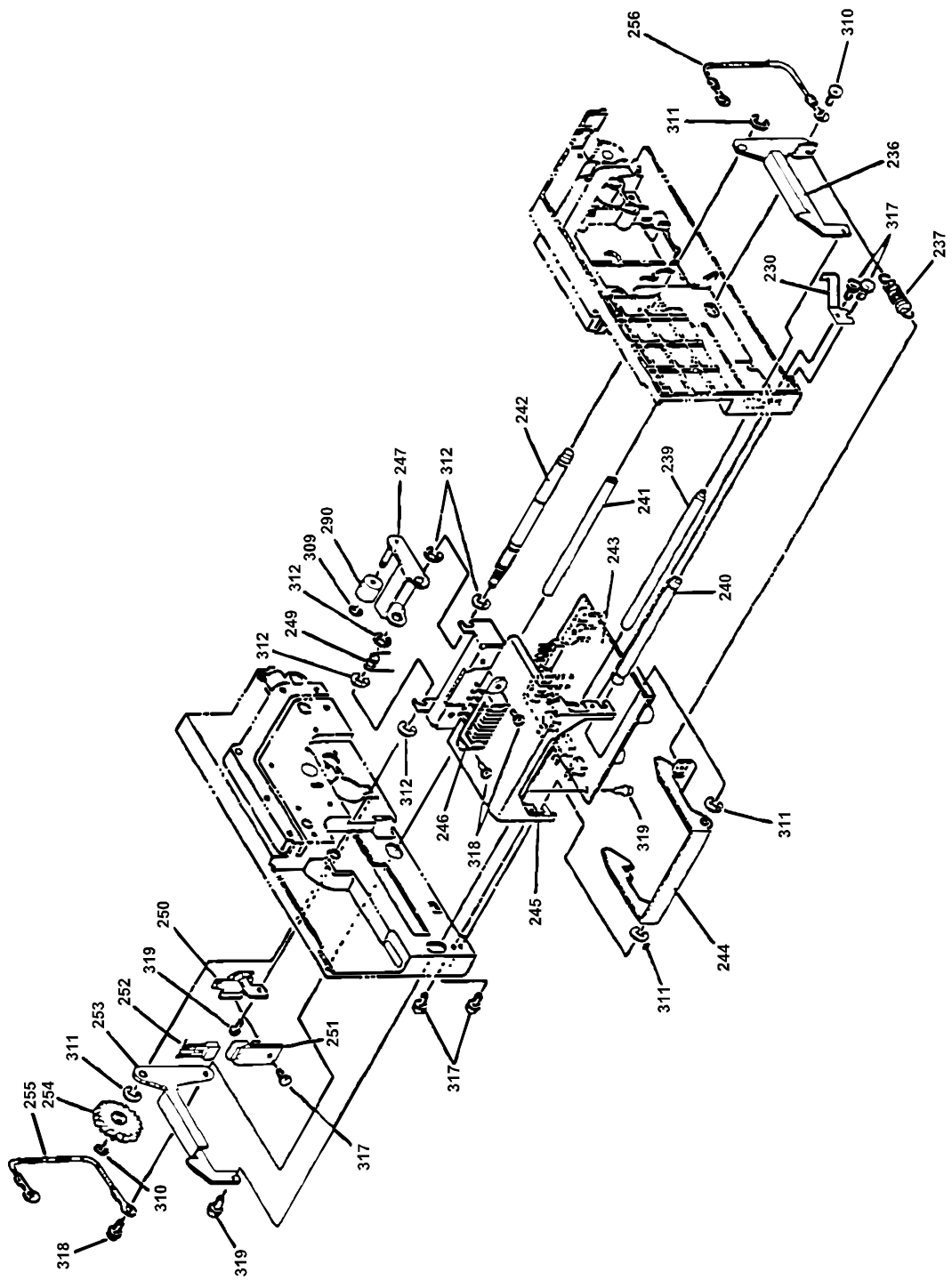


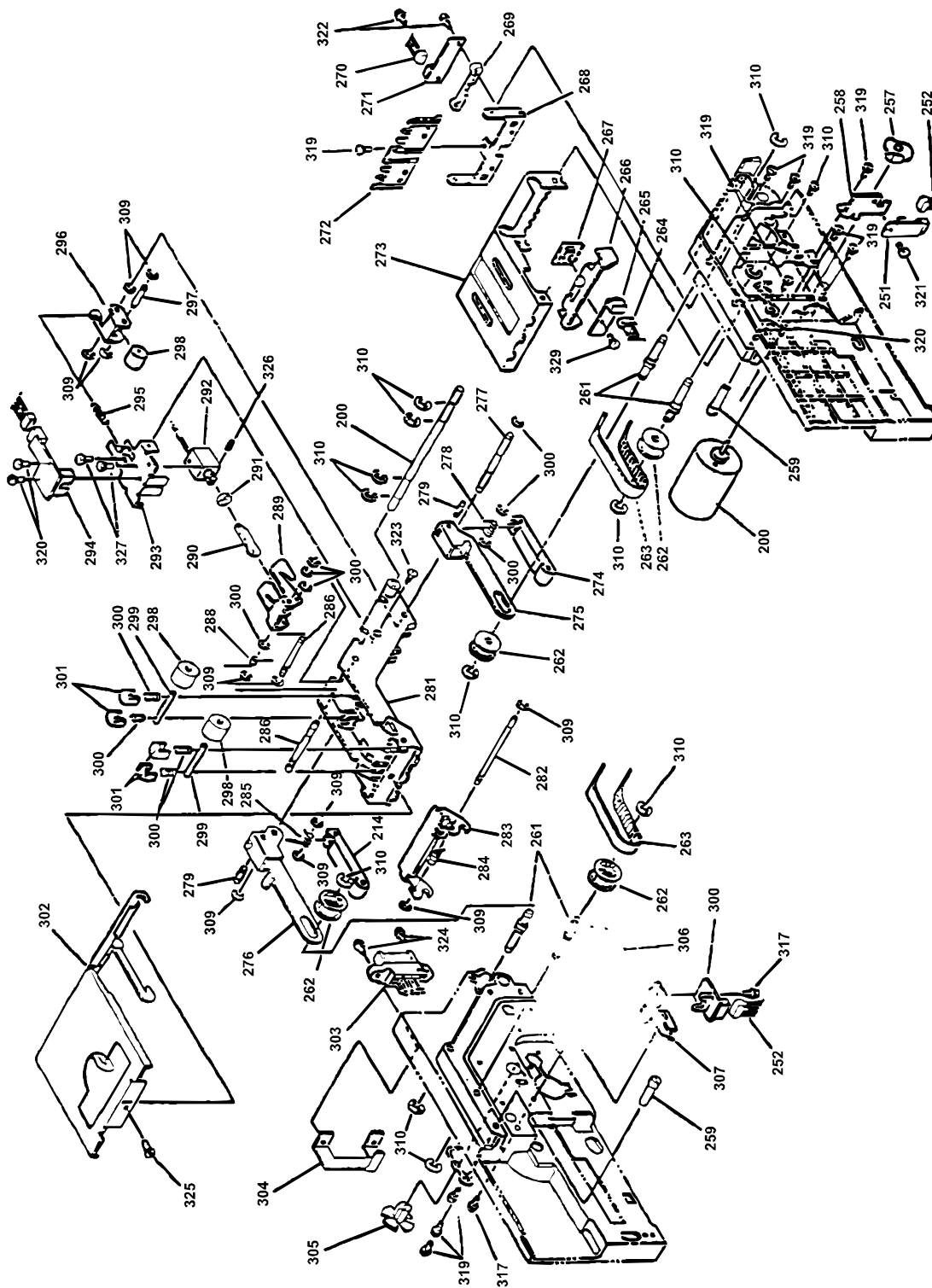
| PARTS LIST | | | | |
|---------------|------------|-------------------|---------------------------------|-----------|
| MODEL WBA**SS | | | Acceptor Unit | |
| No. | EDP No. | Parts No. | Description | Unit Pcs. |
| 101 | 053482 | 943-840-06-09B-01 | Sensor (upper) unit (WBA 10/11) | 1 |
| | 054617 | 943-840-06-03B-01 | Sensor (upper) unit (WBA 20/21) | 1 |
| 102 | 052518 | 0943RE0118 | SP stoper | 1 |
| 103 | 052637 | 0943CS0101 | TR spring | 1 |
| 104 | 026082 | CS-7V01 | Head roller spring | 1 |
| 105 | 052639 | 0943CS0103 | TR spring 2 | 1 |
| 106 | 052522 | 0943RE0126A | VH roller | 1 |
| 107 | 052589 | 0943SH0104 | P roller shaft L | 1 |
| 108 | 052590 | 0943SH0105 | P roller shaft R | 2 |
| 109 | 052524 | 0943RE0130 | Bush (LED) | 1 |
| 110 | 052523 | 0943RE0129 | Bush (RE) | 2 |
| 111 | 040342 | RE-7AJ04A | Sensor bush (ϕ 5) | 2 |
| 112 | 052520 | 0943RE0124D | Guide A (MG) | 1 |
| | 054623 | 0943RE0101C | Guide A (FOT) | 1 |
| 113 | 052466 | 0943PT0102A | V top cover | 1 |
| 114 | 053623 | 0943PT0109B | Earth plate spring L | 1 |
| 115 | 053624 | 0943PT0108B | Earth plate spring R | 2 |
| 116 | 026105 | RE-7V07 | Gear (1) | 2 |
| 117 | 052517 | 0943RE0117 | Catch | 1 |
| 118 | 052516 | 0943RE0115 | Gear VH | 2 |
| 119 | 052512 | 0943RE0111 | Bush ϕ 5 | 2 |
| 120 | 902-002067 | 0943RE0123D | Bill guide 67 | 1 |
| 121 | 052506 | 0943RE0102A | Guide B | 2 |
| 122 | 052593 | 0943ST0103 | Catch stud | 1 |
| 123 | 052592 | 0943ST0101 | Gear stud | 1 |
| 124 | 052508 | 0943RE0107 | Bush A | 1 |
| 125 | 052514 | 0943RE0113A | Pulley W5 A | 2 |
| 126 | 052588 | 0943SH0102 | VM shaft | 1 |
| 127 | 052521 | 0943RE0125C | Guide D (MG) | 1 |
| | 054624 | 0943RE0104C | Guide D (FOT) | 1 |
| 128 | 052591 | 0943SH0107 | HD roller shaft | 2 |
| 129 | 052657 | 0943KS0103B | HDR spring | |
| 130 | 052507 | 0943RE0103K | Guide C | 8 |
| 131 | 045854 | CS-1 | Coating clip | 1 |
| 132 | 052513 | 0943RE0112 | Bush ϕ 3 | 1 |
| 133 | 052585 | 45MXL4.8V | Timing belt | 1 |
| 134 | 701-000028 | 0943RE0114A | Pulley W5 B | 1 |
| 135 | 053634 | 0943AS0102 | Roller guide assy | 1 |
| 136 | 052635 | 0943KS0101B | VT spring R | 2 |
| 137 | 052636 | 0943KS0102B | VT spring L | 2 |
| 138 | 052464 | 0943AS0103A | G fit plate R assy | 4 |
| 139 | 052461 | 0943AS0101A | G fit plate L assy | 2 |

| | | | | |
|-----|---------|-------------------|--------------------------|----|
| 140 | 052587 | 0943SH0101 | OL roller shaft | 1 |
| 141 | 034864 | P11 | O-ring | 1 |
| 142 | 052509 | 0943RE0108 | OL roller shaft | 2 |
| 143 | 052638 | 0943CS0102 | VL spring | 1 |
| 144 | 052511 | 0943RE0110 | Spring collar A | 4 |
| 145 | 052510 | 0943RE0109A | Lever VH | 4 |
| 146 | 053481 | 943-840-06-08B-01 | Sensor (lower) unit | 2 |
| | 0054622 | 943-840-06-02C-01 | Sensor (lower) unit | 2 |
| 147 | 052465 | 943PT0101A | V under cover | 6 |
| 148 | 052676 | 840-05-02 | Relay harness 2 | 12 |
| 149 | 052677 | 840-05-03 | Sensor harness | 1 |
| 150 | 005555 | | M2.6X6 screw with washer | 2 |
| 151 | 023755 | | M2.6X4 screw with washer | 2 |
| 152 | 003707 | | φ 3 E ring | 1 |
| 153 | 003705 | | φ 2 E ring | 2 |
| 154 | 054706 | | M2.6X7 screw with washer | 2 |
| 155 | 003708 | | φ 4 E ring | 2 |
| 156 | 046975 | | M3X6 screw with washer | 1 |
| 157 | 038938 | | 2X10 parallel pin | 2 |

WBA 10-11 Transport Unit







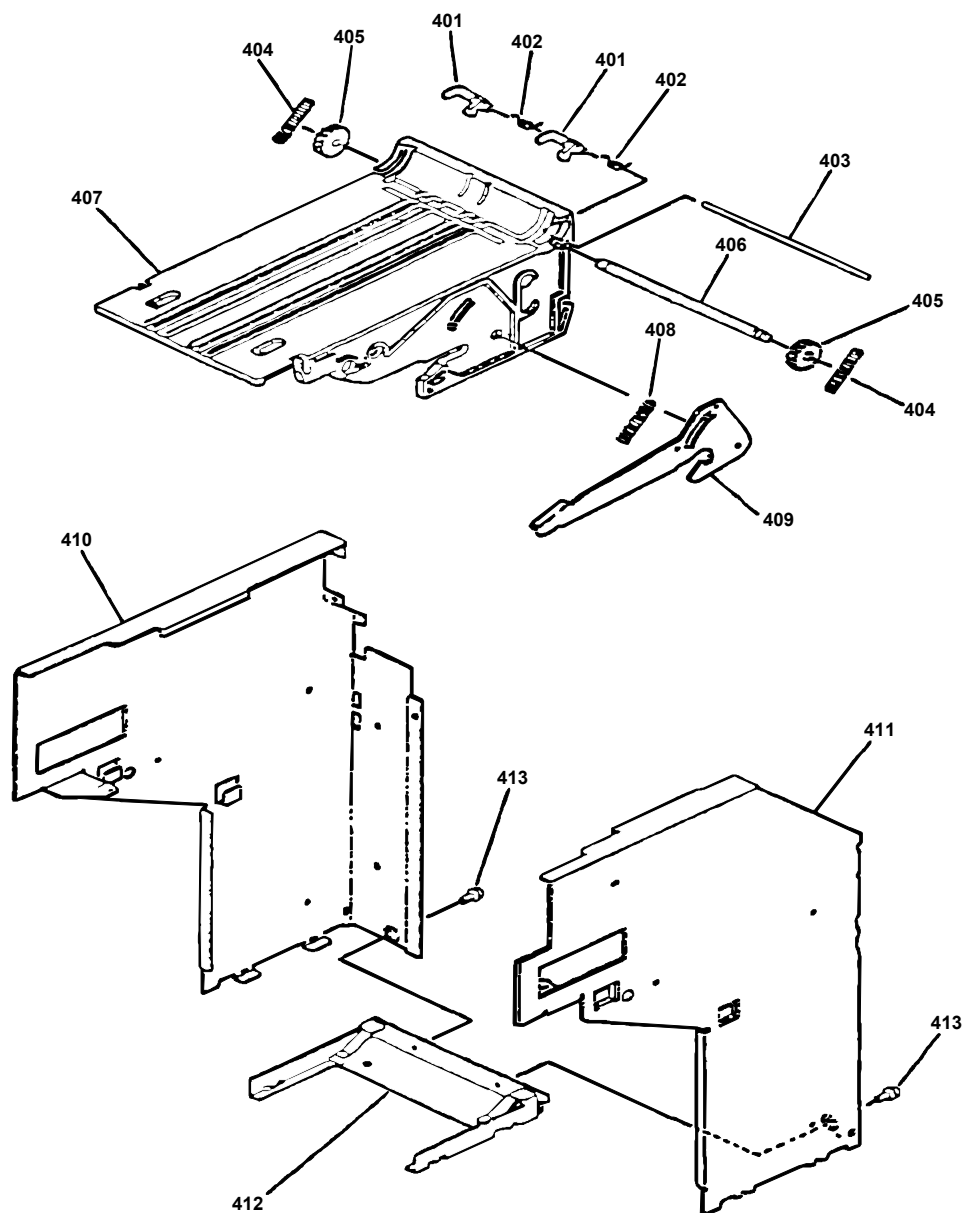
| PARTS LIST | | | | |
|---------------|-------|-------------------|--|------|
| MODEL WBA**SS | | Conveying Section | | |
| EDP | Parts | Description | | Unit |

| No. | No. | No. | | Pcs. |
|-----|------------|-------------------|------------------|------|
| 201 | 053806 | 0943RE0202D | T guide B assy | 1 |
| | 053806 | 0943RE0226B | T guide E assy | 1 |
| 202 | 052533 | 0943RE0208 | Spring collar B | 1 |
| 203 | 052646 | 0943CS0201 | G spring | 1 |
| 204 | 034853 | REO-08 | Gear A | 1 |
| 205 | 052485 | 0943PT109 | Gear W plate | 1 |
| 206 | 044810 | OWC-6-12-6-IN | One way clutch | 1 |
| 207 | 052531 | 0943RE0206A | Gear OV | 1 |
| 208 | 052487 | 0943PT0221 | W plate 0.6 | 2 |
| 209 | 052561 | 0943TR0508 | Bush 6 B | 2 |
| 210 | 052538 | 0943TR0213 | ST gear 2 | 1 |
| 211 | 052537 | 0943TR0212 | ST TR gear 1 | 2 |
| 212 | 052536 | 0943TR0211 | ST gear 1 | 1 |
| 213 | 052615 | 0943DT0204E | ST gear stud 1 | 1 |
| 214 | 052539 | 0943RE0214 | ST TR gear 2 | 2 |
| 215 | 052508 | 0943RE0107 | Bush A | 6 |
| 216 | 052595 | 0943SH0202 | F pulley shaft | 1 |
| 217 | 034850 | REO-05 | Pulley | 3 |
| 218 | 052586 | 126MXL95V | Timing belt | 1 |
| 219 | 052600 | 0943SG0207 | Fin L shaft | 1 |
| 220 | 052545 | 0943RE0225A | Lever | 1 |
| 221 | 052645 | 0943KS0207 | Fin spring | 1 |
| 222 | 052596 | 0943SH0203B | Gear shaft | 1 |
| 223 | 052540 | 0943RE0216 | V roller 2 | 1 |
| 224 | 052535 | 0943RE0210A | T roller | 4 |
| 225 | 052597 | 0943SH0204A | R pulley shaft 1 | 1 |
| 226 | 052612 | 0943BE0204A | TR pulley beam | 1 |
| 227 | 052514 | 0943RE0113A | Pulley W5 A | 2 |
| 228 | 052598 | 0943SH0205 | R pulley shaft 2 | 1 |
| 229 | 052526 | 0943RE0201C | T guide A | 1 |
| 230 | 026105 | RE-7V07 | Gear (1) | 1 |
| 231 | 052542 | 0943RE0219 | TR gear 2 | 1 |
| 232 | 052617 | 0943ST0206A | TR gear stud 1 | 1 |
| 233 | 052618 | 0943ST0207 | TR gear stud 2 | 1 |
| 234 | 052544 | 0943RE0224 | TR gear 3 | 1 |
| 235 | 052606 | 0943SH0214 | Gear pin | 1 |
| 236 | 052473 | 0943PT0204A | VU catch R | 1 |
| 237 | 052647 | No. 2149 | Spring | 1 |
| 238 | 052491 | 0943PT0226 | SP Plate | 1 |
| 239 | 052609 | 0943BE0201 | V catch beam | 1 |
| 240 | 052610 | 0943BE0202 | TR catch beam | 1 |
| 241 | 052611 | 0943BE0203A | V catch beam 2 | 1 |
| 242 | 052594 | 0943SH0201 | Catch shaft | 1 |
| 243 | 300-100059 | 943-840-06-01B-01 | CPU unit (Flash) | 1 |
| | 300-100052 | 943-840-06-12-01 | CPU unit (ROM) | 1 |
| 244 | 052474 | 0943PT0205A | TRU catch | 1 |

| | | | | |
|-----|------------|------------------|--------------------------|----|
| 245 | 052467 | 0943AS0202B | PCB cover assy | 1 |
| 246 | 052675 | 840-05-01A | Relay harness 1 | 1 |
| 247 | 052471 | 0943AS0205 | VP arm TR 2 assy | 1 |
| 248 | 052486 | 0943PT0220 | W plate 0.2 | 1 |
| 249 | 052644 | 0943KS0206 | SVT spring C | 1 |
| 250 | 052476 | 0943PT0207B | TR P holder | 1 |
| 251 | 052671 | K1980-JC | Encoder sensor | 1 |
| 252 | 052680 | 840-05-06 | Stacker sensor harness 1 | 1 |
| 253 | 052472 | 0943PT0203A | VU catch L | 11 |
| 254 | 052541 | 0943RE0218 | TR gear 1 | 1 |
| 255 | 053677 | 840-05-12 | FG harness 1 | 1 |
| 256 | 053678 | 840-05-13 | FG harness 2 | 1 |
| 257 | 052543 | 0943RE022A | Gear STMO | 1 |
| 258 | 052477 | 0943PT0203A | ST P holder | 1 |
| 259 | 052614 | 0943ST0203A | Catch stud | 2 |
| 260 | 052771 | 943-890-05-05-01 | Stacker motor assy | 1 |
| 261 | 052613 | 0943DY0202S | Pulley stud | 4 |
| 262 | 701-000028 | 0943RE0114A | Pulley W5 B | 4 |
| 263 | 052584 | 144MXL4.8V | Timing belt | 2 |
| 264 | 052681 | 840-05-07 | Stacker sensor harness 2 | 1 |
| 265 | 052670 | KR979-JC | Feed out sensor | 1 |
| 266 | 052478 | 0943PT0201A | F out S holder | 1 |
| 267 | 052532 | 0943RE0207 | Re sensor cover | 1 |
| 268 | 052475 | 0943PT0206A | B stopper plate | 1 |
| 269 | 052530 | 0943RE0205 | Spacer | 1 |
| 270 | 052682 | 840-05-08 | Stacker sensor harness 3 | 1 |
| 271 | 052673 | KI982-JC | Home position sensor | 1 |
| 272 | 052664 | 0943RE0221C | F out guide | 1 |
| 273 | 052528 | 0943RE0203C | T guide C | 1 |
| 274 | 052469 | 0943AS0204A | VP arm TR assy | 2 |
| 275 | 052489 | 0943PT0223 | Stopper R | 1 |
| 276 | 052488 | 0943PT0222A | Stopper L | 1 |
| 277 | 052605 | 0943SH0213 | PR arm shaft | 1 |
| 278 | 052641 | 0943KS0203 | SVT spring R | 1 |
| 279 | 052608 | 0943SH0216 | VP arm pin | 2 |
| 280 | 052599 | 0943SH0206 | TR GD shaft | 1 |
| 281 | 052529 | 0943RE0204A | T guide D | 1 |
| 282 | 052601 | 0943SH0209 | C catch shaft | 1 |
| 283 | 052481 | 0943PT0215A | Cover catch | 1 |
| 284 | 052643 | 0943KS0205 | TRC spring | 1 |
| 285 | 052642 | 0943KS0204 | SVT spring L | 1 |
| 286 | 052603 | 0943SH0211A | SOL lever shaft | 1 |
| 287 | 052602 | 0943SH0210 | SOL L shaft | 1 |
| 288 | 052640 | 0943KS0201 | SOL spring | 1 |
| 289 | 052483 | 0943PT0217B | SOL lever shaft | 1 |
| 290 | 052482 | 0943PT0216A | SOL link | 1 |
| 291 | 052619 | 0943CO0201A | SOL collar | 1 |

| | | | | |
|-----|------------|-------------------|----------------------------------|----|
| 292 | 058206 | 943-840-05-09A-01 | Solenoid assy | 1 |
| 293 | 052484 | 0943PT0218A | SOL holder | 1 |
| 294 | 052672 | K11101-JC | Solenoid lever sensor | 1 |
| 295 | 052656 | No. 2069 | Spring | 1 |
| 296 | 052479 | 0943PT0212 | PR arm | 1 |
| 297 | 052604 | 0943SH0212 | PR roller pin | 1 |
| 298 | 034851 | REO-06 | Roller | 4 |
| 299 | 052607 | 0943SH0215 | Roller pin | 2 |
| 300 | 052637 | 0943AS0101 | TR spring | 4 |
| 301 | 052518 | 0943RE0118 | SP stopper | 4 |
| 302 | 052468 | 0943AS0203A | TR cover assy | 1 |
| 303 | 400-100042 | 840-05-10 | Main unit removable connector | 1 |
| 304 | 052490 | 0943PT0224A | CN stopper | 1 |
| 305 | 052534 | 0943RE0209A | Gear MO | 1 |
| 306 | 052772 | 943-840-05-04-01 | Carrying motor assy | 1 |
| 307 | 052480 | 0943PT0214 | FIN S holder | 1 |
| 308 | 052674 | K11102-JC | Lever sensor | 1 |
| 309 | 003705 | | φ 2 E ring | 32 |
| 310 | 003707 | | φ 3 E ring | 16 |
| 311 | 003708 | | φ 4 E ring | 27 |
| 312 | 046984 | | φ 5 E ring | 7 |
| 313 | 003719 | 5103-21 | CS type snap ring | 25 |
| 314 | 038938 | | φ 2 X 10 parallel pin | 6 |
| 315 | 003608 | | M3 X 5 screw with washer (Large) | 1 |
| 316 | 053008 | | M3 X 6 TP screw | 2 |
| 317 | 046975 | | M3 X 6 screw with washer | 9 |
| 318 | 186-300508 | | M3 X 8 screw with washer | 6 |
| 319 | 005555 | | M2.6 X 6 screw with washer | 15 |
| 320 | 055370 | | M3 X 10 P tight | 2 |
| 321 | 006014 | | M3 X 4 Pan head | 1 |
| 322 | 005582 | | M2.6 X 8 pan head | 2 |
| 323 | 006021 | | M2.6 X 4 flat head vis | 2 |
| 324 | 186-300510 | | M3 X 10 screw with washer | 2 |
| 325 | 005332 | | M3 X 5 flat head vis | 1 |
| 326 | 018192 | | 1.6 X 10 waveform spring pin | 1 |
| 327 | 006012 | | M2 X 4 pan head | 2 |
| | 006034 | | φ 2 spring washer | 2 |
| | 047288 | | 2 X 4.3 X 0.5 flat washer | 2 |
| 328 | 171-260004 | | M2.6 X 4 pan head | 2 |
| 329 | 053009 | | M2 X 6 pan head | 1 |
| | 006034 | | φ 2 spring washer | 1 |

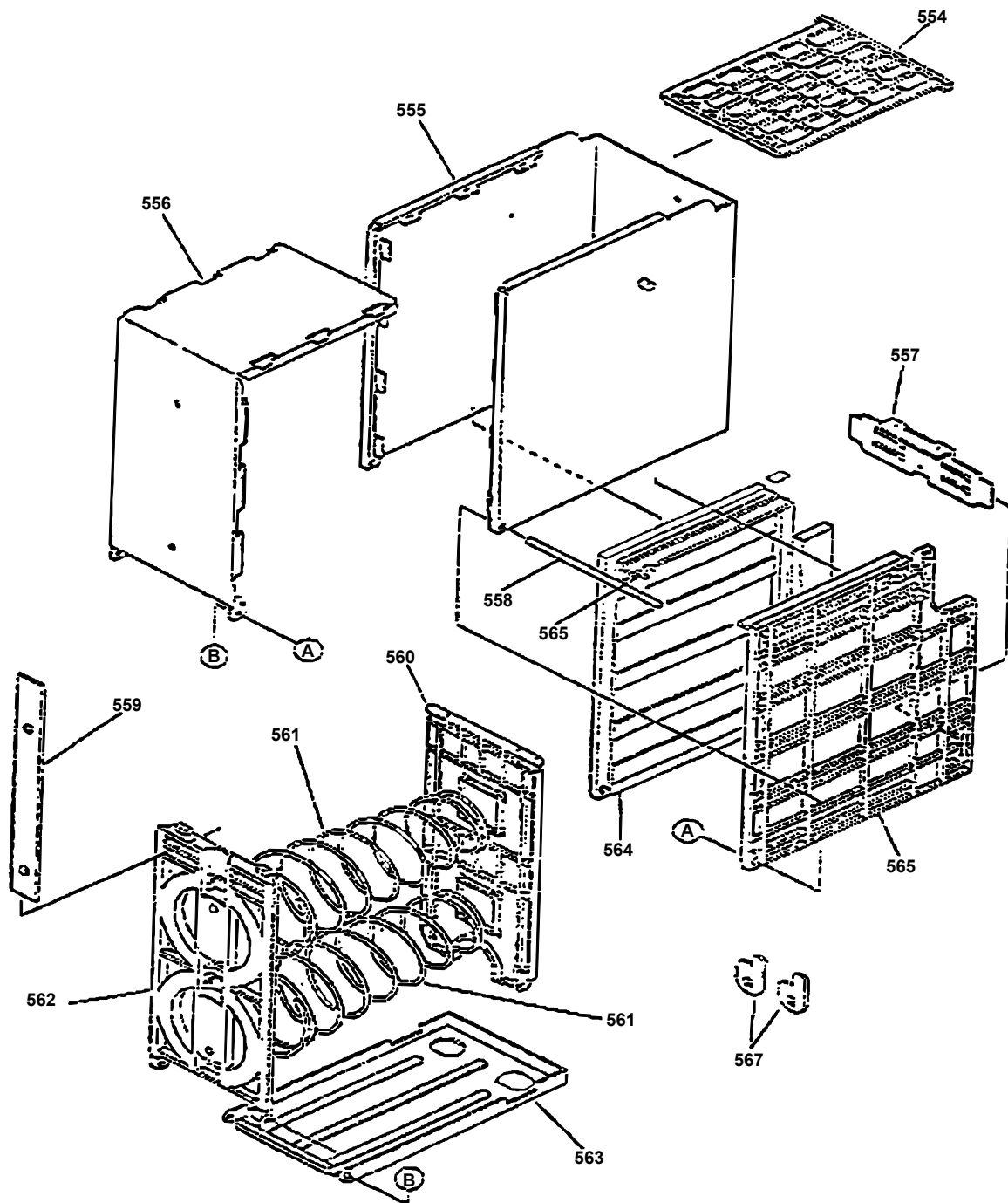
WBA 10-11 Frame Unit

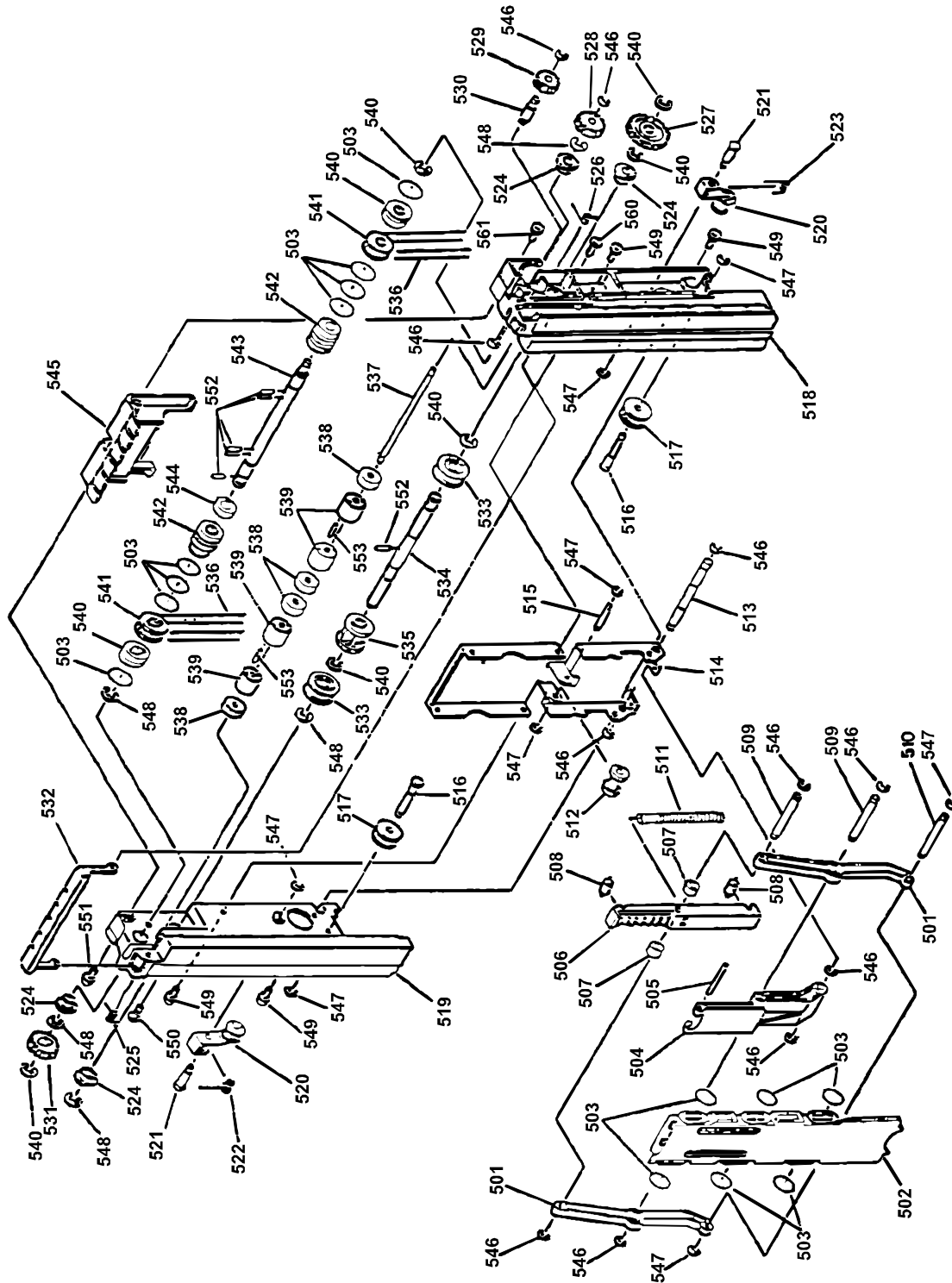


| PARTS LIST | | | |
|---------------|---------|-------------|-----------------|
| MODEL WBA**SS | | | Frame |
| No. | EDP No. | Parts No. | Description |
| 401 | 052548 | 0943RE0303A | Box lever |
| 402 | 052650 | 0943KS0301 | FL spring |
| 403 | 052621 | 0943SH0302A | Box lever shaft |
| 404 | 052648 | 0943CS0301A | FG spring |
| 405 | 052547 | 0943RE0302 | Stand gear |
| 406 | 052620 | 0943SH0301 | S gear shaft |
| 407 | 052546 | 0943RE0301A | TR stand |

| | | | |
|-----|------------|-------------|------------------|
| 408 | 052649 | 0943CS0302 | BL spring |
| 409 | 052492 | 0943AS0301 | Box set lever AS |
| 410 | 052494 | 0943PT0302C | Right frame |
| 411 | 052493 | 0943PT0301B | Left frame |
| | 053807 | 0943PT0305A | Left frame (2) |
| 412 | 052495 | 0943PT0303 | Frame base |
| 413 | 181-300506 | | M 3 X 6 screw |

WBA 10-11 Cash Box





PARTS LIST

| MODEL WBA-**-SS | | | Cash Box | |
|-----------------|---------|-----------|-------------|-----------|
| No. | EDP No. | Parts No. | Description | Unit Pcs. |

| | | | | |
|-----|------------|-------------|----------------|----|
| 501 | 052559 | 0943RE0506A | Push link 2 | 2 |
| 502 | 052556 | 0943RE0503A | Push plate | 1 |
| 503 | 034864 | P11 | O-ring | 14 |
| 504 | 052557 | 0943RE0504A | Push link 1 | 1 |
| 505 | 052629 | 0943SH0507 | U arm pin | 1 |
| 506 | 052560 | 0943RE0507A | PU ruck | 1 |
| 507 | 052580 | 0943RE0515A | Arm roller 1 | 2 |
| 508 | 052631 | 0943BE0502 | R RO pin | 2 |
| 509 | 052627 | 0943SH0505 | U R shaft | 2 |
| 510 | 052630 | 0943SH0508 | L arm shaft | 1 |
| 511 | 052651 | 0943CS0501 | PU spring | 1 |
| 512 | 052579 | 0943RE0514 | R guide roller | 1 |
| 513 | 052628 | 0943SH0506 | L arm shaft | 1 |
| 514 | 052503 | 0943PT0501A | PU base | 1 |
| 515 | 052626 | 0943SH0504 | G RO shaft | 1 |
| 516 | 052634 | 0943ST0504 | pulley stud | 2 |
| 517 | 701-000028 | 0943RE0114A | Pulley W5 B | 2 |
| 518 | 052555 | 0943RE0502A | PU guide R | 1 |
| 519 | 052554 | 0943RE0501A | PU guide L | 1 |
| 520 | 053633 | 943AS0501 | B VP arm assy | 2 |
| 521 | 052633 | 0943ST0502A | Arm stud | 2 |
| 522 | 052652 | 0943KS0502 | PVT spring L | 1 |
| 523 | 052652 | 0943KS0501 | PVT spring R | 1 |
| 524 | 052561 | 0943RE0508 | Bush f 6 B | 4 |
| 525 | 052654 | 0943KS0503 | PR spring R | 1 |
| 526 | 052655 | 0943KS0504 | PR spring L | 1 |
| 527 | 052582 | 0943RE0518A | PU gear 2 | 1 |
| 528 | 052547 | 0943RE0302 | Stand gear | 1 |
| 529 | 052581 | 0943RE0517 | PU gear 1 | 1 |
| 530 | 052632 | 0943ST0501 | Gear stud | 1 |
| 531 | 018184 | SBC-0216 | Gear (16Z) | 1 |
| 532 | 052504 | 0943PT0503 | PR Cover | 1 |
| 533 | 052578 | 0943RE0512 | V roller | 2 |
| 534 | 052624 | 0943SH0502 | Gear shaft | 1 |
| 535 | 052563 | 0943RE0510 | Ruck gear | 1 |
| 536 | 052583 | 150MXL4.8V | Timing belt | 2 |
| 537 | 052625 | 0943SH0503 | Roller shaft | 1 |
| 538 | 026108 | RE-7V10 | Roller | 4 |
| 539 | 034851 | REO-06 | Roller | 4 |
| 540 | 052562 | 0943RE0509 | B OL pulley | 2 |
| 541 | 052514 | 0943RE0113A | Pulley W5 A | 2 |
| 542 | 034849 | REO-04 | Pulley | 2 |
| 543 | 052623 | 0943SH0501 | Pulley shaft | 1 |
| 544 | 052577 | 0943RE0511 | Pulley collar | 1 |
| 545 | 052558 | 0943RE0505 | PU cover | 1 |
| 546 | 003707 | | φ 3 E ring | 11 |
| 547 | 003705 | | φ 2 E ring | 8 |

| | | | | |
|-----|--------|-------------|--------------------------------|----|
| 548 | 003708 | | φ 4 E ring | 11 |
| 549 | 005555 | | M2.6 X 6 screw with washer | 4 |
| 550 | 026071 | | M2.6 X 8 tapping No. 2 class | 2 |
| 551 | 053011 | | M2.6 X 14 screw with washer | 2 |
| 552 | 038938 | | φ 2 X 10 parallel pin | 7 |
| 553 | 018192 | | φ 1.6 X 10 waveform spring pin | 2 |
| 554 | 052552 | 0943RE0404A | Box CN plate | 1 |
| 555 | 052496 | 0943AS0401A | Box cover assy | 1 |
| 556 | 052497 | 0943PT0402 | Box cover 2 | 1 |
| 557 | 052500 | 0943PT0405A | Tang catch | 1 |
| 558 | 052622 | 0943SH0401 | Box pin | 1 |
| 559 | 052499 | 0943PT0404 | HN plate | 1 |
| 560 | 052553 | 0943RE0405A | Receive plate | 1 |
| 561 | 034869 | LB-02-B | Receiving plate spring | 2 |
| 562 | 052551 | 0943RE0403A | Spring holder | 1 |
| 563 | 052498 | 0943PT0403A | Box OP cover | 1 |
| 564 | 052549 | 0943RE0401A | Box frame L | 1 |
| 565 | 052550 | 0943RE0402A | Box frame R | 1 |
| 566 | 003706 | | φ 2.5 E ring | 1 |
| 567 | 052505 | 0943PT0504 | Tang B | 2 |